

*Uinta-Wasatch-Cache National Forest – Spanish Fork Ranger District*  
***BENMORE ALLOTMENT RMU #00821***  
***ANNUAL OPERATING INSTRUCTIONS***  
***2025***



**PERMITTED USE**

<b>Permittee</b>	<b>Permitted Use</b>	<b>Authorized Use</b>
Pete and Judy Castagno	52 Cow/Calf Pair May 1 to Nov. 10	52 Cow/Calf Pair May 1 to Nov. 10
<b>Permittee</b>	<b>Permitted Use</b>	<b>Authorized Use</b>
Charles M. Larsen Trust	145 Cow/Calf Pair May 1 to Nov. 10	145 Cow/Calf Pair May 1 to Nov. 10
<b>Permittee</b>	<b>Permitted Use</b>	<b>Authorized Use</b>
Corp. of Presiding Bishopric DBA Nephi Crops	168 Cow/Calf Pair May 1 to Nov. 10	168 Cow/Calf Pair May 1 to Nov. 10
Total	365 Cow/Calf Pair	365 Cow/Calf Pair



## GRAZING ROTATION

The Benmore Allotment is managed with a modified rest-rotation system. The grazing rotation for the 2025 season is listed below:

<b>Pasture:</b>	<b>Livestock Numbers:</b>	<b>Dates of Use:</b>	<b>Days:</b>
Ault North Ault South Lower Bennion East Benmore Pastures (Castagno/Larson)	197 Cow/Calf Pair	May 1 to Jun. 19	50
<b>Pasture:</b>	<b>Livestock Numbers:</b>	<b>Dates of Use:</b>	<b>Days:</b>
Bull Pasture Northeast Northwest West Benmore Pastures (Nephi Crops)	168 Cow/Calf Pair	May 1 to Jun. 19	50
<b>Pasture:</b>	<b>Livestock Numbers:</b>	<b>Dates of Use:</b>	<b>Days:</b>
Middle Dutch Unit 35	365 Cow/Calf Pair	June 20 to July 29	40
<b>Pasture:</b>	<b>Livestock Numbers:</b>	<b>Dates of Use:</b>	<b>Days:</b>
Bennion Canyon Dutch Canyon	365 Cow/Calf Pair	July 30 to Sept. 30	63
<b>Pasture:</b>	<b>Livestock Numbers:</b>	<b>Dates of Use:</b>	<b>Days:</b>
West Dutch (Castagno/Larsen)	197 Cow/Calf Pair	Oct. 1 to Nov. 10	41
<b>Pasture:</b>	<b>Livestock Numbers:</b>	<b>Dates of Use:</b>	<b>Days:</b>
East Dutch (Nephi Crops)	168 Cow/Calf Pair	Oct. 1 to Nov. 10	41



Pasture:	Livestock Numbers:	Dates of Use:	Days:
Ault BLM Hidden Pasture	REST	REST	0
			<b>Total Days:</b> 194

- *The above rotation dates are flexible based on utilization standards listed below.*
- Permittees have the flexibility to alter the rotation (with forest service approval) since they are primarily monitoring the forage and cattle to determine when the livestock are moved from pasture to pasture.

### FOREST PLAN AND ALLOTMENT MANAGEMENT PLAN REQUIREMENTS

The Uinta National Forest Land and Resource Management Plan, which was approved in 2003, the Allotment Management Plan for the Benmore allotment, which was approved on March 17, 2010, the Ault BLM AMP, which was approved on March 8, 2007, and the Ault AMP, which was approved on March 16, 1994 list the following standards, guidelines, and objectives:

#### Upland Forage Utilization

*Standard:* Limit grazing to meet the following utilization levels on non-riparian vegetation types based on the annual average of the current year’s growth. However, through June 15 at Strawberry Reservoir Management Area and through June 1 at the Vernon Management Area, minimum canopy cover and height requirements for greater sage grouse habitat take precedence over the forage utilization standards in the following table:

### Forage Utilization Standards

<b>Vegetation type</b> <b>General Uplands and Winter Range</b>  Upland shrublands (sagebrush, snowberry, mountain mahogany species, cliffrose, bitterbrush, saltbrush, and mountain brush)	<b>Forage Utilization</b> <b>Very Early to Early Seral</b>  40%	<b>Forage Utilization</b> <b>Mid to Late Seral</b>  60%
<b>Vegetation type</b> <b>General Uplands and Winter Range</b>  Grasslands	<b>Forage Utilization</b> <b>Very Early to Early Seral</b>  45%	<b>Forage Utilization</b> <b>Mid to Late Seral</b>  65%

It is the permittee's responsibility to make sure allowable use standards are not exceeded. When utilization standards are met the permittee will be required to remove cattle from the entire pasture or allotment. Use of the rest unit will not be allowed.

The upland areas of the Northwest pasture of the allotment are in unsatisfactory condition due to the high amount of bare ground, poor plant composition and vigor. These areas will be required to have no more than 40% utilization.

*Guideline:* Manage approximately 80 percent of potential greater sage grouse breeding and winter habitat areas in the Vernon and Strawberry Reservoir Management Areas to support the percentages and heights of canopy cover listed in the table below. Breeding habitat should retain the given height levels of grasses and a diversity of forbs annually through June 1 in the Vernon Management Area and June 15 in the Strawberry Reservoir Management Area. Vegetation should be maintained in a mosaic of openings and shrubs.



## Vegetation Requirements in the Vernon Management Area

Greater Sage Grouse Breeding Habitat		
Vegetation type	Minimum % Canopy Cover	Minimum Height Canopy Cover
Sagebrush	15 to 25%	16 to 32 inches
Vegetation type	Minimum % Canopy Cover	Minimum Height Canopy Cover
Grasses	Greater than 15%	Greater than 6 inches
Vegetation type	Minimum % Canopy Cover	Minimum Height Canopy Cover
Forbs	Greater than 10%	Greater than 6 inches
Greater Sage Grouse Winter Habitat		
Vegetation type	Minimum % Canopy Cover	Minimum Height Canopy Cover
Sagebrush	10 to 30% (above snow)	10 to 14 inches (above snow)

- There are no minimum percent canopy cover or minimum height requirements for greater sage grouse winter habitat in grasses or forbs.
- Minimum height is measured as droop height, the highest naturally growing portion of the plant.

### Riparian Forage Utilization

*Standard:* Limit grazing to meet the following utilization levels within Riparian Habitat Conservation Areas (RHCAs) based on the average current year's growth.



### Utilization Standards by RHCA Class

<b><u>RHCA Class</u></b> Riparian Class II (Vernon Creek)	<b><u>Minimum Percent of Stream Length</u></b>  80%	<b><u>Minimum Greenline Stubble Height by Season of Use – Very Early to Early in Early Season</u></b>  4 inches	<b><u>Minimum Greenline Stubble Height by Season of Use – Very Early to Early in Late Season</u></b>  5 inches	<b><u>Minimum Greenline Stubble Height by Season of Use – Mid to Late Seral in Early Season</u></b>  3 inches	<b><u>Minimum Greenline Stubble Height by Season of Use – Mid to Late Seral in Late Season</u></b>  4 inches
<b><u>RHCA Class</u></b> Riparian Class III (All other streams)	<b><u>Minimum Percent of Stream Length</u></b>  70%	<b><u>Minimum Greenline Stubble Height by Season of Use – Very Early to Early in Early Season</u></b>  3 inches	<b><u>Minimum Greenline Stubble Height by Season of Use – Very Early to Early in Late Season</u></b>  4 inches	<b><u>Minimum Greenline Stubble Height by Season of Use – Mid to Late Seral in Early Season</u></b>  2 inches	<b><u>Minimum Greenline Stubble Height by Season of Use – Mid to Late Seral in Late Season</u></b>  3 inches
<b><u>RHCA Class</u></b> Riparian Class II	<b><u>Minimum Percent of Stream Length</u></b>  80%	<b><u>Forage Utilization Limits by Season of Use – Very Early to Early in Early Season</u></b>  50%	<b><u>Forage Utilization Limits by Season of Use – Very Early to Early in Late Season</u></b>  40%	<b><u>Forage Utilization Limits by Season of Use – Mid to Late in Early Season</u></b>  60%	<b><u>Forage Utilization Limits by Season of Use – Mid to Late in Late Season</u></b>  50%
<b><u>RHCA Class</u></b> Riparian Class III	<b><u>Minimum Percent of Stream Length</u></b>  70%	<b><u>Forage Utilization Limits by Season of Use – Very Early to Early in Early Season</u></b>  60%	<b><u>Forage Utilization Limits by Season of Use – Very Early to Early in Late Season</u></b>  50%	<b><u>Forage Utilization Limits by Season of Use – Mid to Late in Early Season</u></b>  65%	<b><u>Forage Utilization Limits by Season of Use – Mid to Late in Late Season</u></b>  55%



<b>RHCA Class</b>	<b>Minimum Percent of Stream Length</b>	<b>Willow Utilization by Season of Use – Very Early to Early in Early Season</b>	<b>Willow Utilization by Season of Use – Very Early to Early in Late Season</b>	<b>Willow Utilization by Season of Use – Mid to Late in Early Season</b>	<b>Willow Utilization by Season of Use – Mid to Late in Late Season</b>
Riparian Class II	80%	Not Applicable	35%	Not Applicable	50%
<b>RHCA Class</b>	<b>Minimum Percent of Stream Length</b>	<b>Willow Utilization by Season of Use – Very Early to Early in Early Season</b>	<b>Willow Utilization by Season of Use – Very Early to Early in Late Season</b>	<b>Willow Utilization by Season of Use – Mid to Late in Early Season</b>	<b>Willow Utilization by Season of Use – Mid to Late in Late Season</b>
Riparian Class III	70%	Not Applicable	35%	Not Applicable	50%

- *Note:* For minimum Greenline Stubble Height the height of key species (palatable, hydrophytic species indicative of mid to late seral riparian plant communities, or as indicated in the site-specific Allotment Management Plan). If acceptable “key species” are absent from a site, only utilization standards shall be used.
- *Note:* Forage utilization limits are based on percent of total average annual growth.
- *Note:* There are no willow utilization standards for early season use.

It is the permittee’s responsibility to make sure allowable use standards are not exceeded, especially in riparian areas. Permittees are encouraged to herd cattle away from riparian areas since they are generally the first areas utilized. If use along riparian areas reaches Forest Plan Standards and Guidelines, even if forage remains on the uplands, permittees will be required to remove cattle from the entire unit or allotment.

### **Riparian Habitat Conservation Areas (RHCA)**

Portions of *watersheds* where *riparian*-dependent resources receive primary emphasis and management activities are subject to specific standards and guidelines. RHCAs include traditional *riparian* corridors, *wetlands*, *perennial* and *intermittent* streams, and other areas that help maintain the integrity of aquatic *ecosystems*. There are three RHCA classes of varying widths offering varying levels of protection: class 1 with widths extending 300 feet from each edge of the waterbody (600 feet total); class II with widths extending 200 feet from each edge of the waterbody (400 feet total); and class III with widths extending 100 feet from each edge of the waterbody (200 feet total). The only streams on the Benmore allotment are Class III streams.



## Additional Forest Plan Standards and Guidelines

*Guideline:* Maintain adequate ground cover to filter runoff and prevent detrimental erosion in Riparian Habitat Conservation Areas (RHCAs).

### Riparian Habitat Conservation Area (RHCA) Ground Cover Requirements

<b>RHCA</b>	<b>Minimum Ground Cover Requirement</b>	<b>Minimum Percent of RHCA to Meet Requirement</b>
Class II	80% of Potential	80%
<b>RHCA</b>	<b>Minimum Ground Cover Requirement</b>	<b>Minimum Percent of RHCA to Meet Requirement</b>
Class III	80% of Potential	70%

*Standard:* Locate livestock salt grounds outside of Riparian Habitat Conservation Areas (RHCAs).

*Standard:* Locate new livestock troughs, tanks, and holding facilities out of Riparian Habitat Conservation Areas (RHCAs). For existing livestock handling facilities inside RHCAs, assure that facilities do not prevent attainment of aquatic Forest Plan management direction. Modify, relocate, or close existing facilities where aquatic Forest Plan management direction cannot be met.

*Guideline:* Minimize trailing livestock through Riparian Habitat Conservation Areas (RHCAs). Close or relocate livestock driveways to minimize impacts to RHCAs.

*Guideline:* Subject to valid existing rights, free-flowing water and associated riparian vegetation communities should be retained at developed spring sites. If possible, existing spring developments should be modified to return water to riparian ecosystems within the source drainage.

*Guideline:* Avoid equipment operation in stream courses, open water, seeps, or springs. If use of equipment in such areas is required, impacts should be minimized.

*Guideline:* Limit equipment operation in Riparian Habitat Conservation Areas (RHCAs). If the use of equipment in these areas is required, incorporate additional mitigation to minimize adverse impacts.

*Guideline:* Implement intensive grazing management that provides periodic rest designed to achieve and maintain desired vegetation community composition and structure.

*Guideline:* Maintain at least 70 percent of potential effective ground cover to provide nutrient cycling and protect the soil from erosion in excess of soil loss tolerance limits.

*Standard:* Provide wildlife escape ramps in all developed water sources.



*Guideline:* Provide for wildlife movement through and/or around structures or project sites such as fences, spring developments, guzzlers, roads, and ditches.

*Guideline:* Defer livestock grazing in areas disturbed by wildland fire or other natural events until vegetation has reestablished sufficiently, but for no less than two growing seasons.

*Standard:* Only certified noxious weed-free hay or feed is allowed on National Forest land, including hay or feed for use by recreational livestock. Any materials such as hay, straw, or mulch that are used for rehabilitation and reclamation activities shall be certified weed-free.

## **OTHER REQUIREMENTS**

*Actual Use:* Please complete the enclosed actual use record form at the close of the grazing season and return to the Spanish Fork Ranger District before December 1.

*Salt:* Salt will be used as a tool to improve livestock distribution. Place salt where use is light, such as ridge tops and areas away from water. Avoid stock tanks, wet meadows, and creek bottoms. Place salt away from roads and developed trails.

*State Livestock Health Laws:* All owners of livestock must comply with state livestock health laws.

*Dead Livestock:* Livestock which die within 100 yards of public roads or live water will be disposed of in a manner approved by the District Ranger or his/her representative.

*Off Road Vehicle Use:* Off road vehicle use for reconstruction or maintenance of range improvements (when hauling materials only) listed in these operating instructions is hereby authorized. ATV's or trucks can be used to check water. ATV's or trucks can be used to haul salt on system and non-system roads or trails. No new trails or roads can be made. Use of off-road vehicles is limited to periods of time when weather and ground conditions are such that rutting, and soil movement will not occur. Any other off road vehicle use shall be approved in advance (location and time) by the District Ranger or his/her representative. Absent this approval, travel restrictions described in the Forest Supervisors Order of May 27, 2005, and in the Uinta National Forest Summer Travel Map (2007) apply.

*Payment of Fees:* The permittee will not allow owned or controlled livestock to be on Forest Service-administered lands unless the fees specified in the Bill for Collection are paid.

*Turnout:* Turnout will not occur prior to range readiness (8 (c) on permit). Range readiness is measured by soil moisture and plant growth. Soils may be damp but should be firm to avoid excessive compaction or hummocking due to livestock.

*Inspections/Monitoring:* Allotment/pasture inspections will be performed periodically throughout the grazing season by Forest Service personnel. Livestock distribution, correct livestock location, numbers and identification, structural improvement maintenance, and utilization levels will be evaluated during these site visits. If you wish to accompany Forest Service personnel on these inspections, please contact the Rangeland Management Specialist.



*Compliance:* The permittee is responsible for compliance with the terms and conditions of the grazing permit, allotment management plan, operating instructions, and the directions of the Forest Officer in charge. Failure to meet these terms and conditions is violation of the grazing permit.

## **SCHEDULED ACTIVITIES**

- ✓ Permittees will treat whitetop at Benmore corrals if still present.
- ✓ The Forest Service will continue the NEPA process for the Harker/Vernon Pipeline Extension, adding a trough in the Bull Pasture. A change application of water rights needs to be completed.
- ✓ Permittees will replace old east-west fence along Benmore Road (forest service already provided materials).

## **MAINTENANCE RESPONSIBILITIES**

The permittee is responsible for all improvements assigned in the term grazing permits and listed in these operating instructions. Maintenance shall mean the timely repair of management facilities to a condition adequate to perpetuate the life of the facility and to serve the purpose intended. All improvements will be maintained to the standard for which they were constructed. Maintenance includes permittee responsibility for furnishing the materials needed for repairs. Allotment boundary fences must be maintained before cattle enter the allotment. Pasture division fences and water developments must be maintained before cattle can enter each pasture. Improvements will be maintained to the following standards:

### **Posts, Poles and Bucks**

- Replace broken or rotten posts, bucks, braces and poles
- Notch poles and attach to posts or bucks with spikes
- Straighten and re-tamp loose wood brace and line posts
- Straighten or replace bent steel posts

### **Wire**

- Replace broken wire if necessary
- Splice wire with double strand 12-gauge minimum size barbed wire or smooth wire
- Wrap end of broken wires back around itself to form eye
- Place splicing wire through eye and wrap back around itself
- Make at least three wraps in each eye
- Make wraps adjacent to each other.
- Re-space wire where spacing has been altered
- Measure spacing from ground line in inches:
  - 4-wire fence: 16 inches, 24 inches, 32 inches, 42 inches
  - 3-wire fence: 18 inches, 28 inches, 40 inches
- Re-stretch wires tight with consideration for contraction and expansion
- Wire will not be twisted or kinked



### **Stays**

- Replace broken or missing stays
- Straighten bent wire stays

### **Trees**

- Remove all fallen trees from fences
- Do not use logs and/or brush instead of poles or wire
- If wire is attached to trees, nail wood slab to tree and staple wire to slab

### **Gates**

- Stretch wire so gates will not sag, but easily open and close
- Make gate loops with smooth wire

### **Wire Fasteners**

- Replace missing staples and steel post clips
- Drive staples diagonally into bucks, braces and stays
- Drive staples in wood posts, bucks and stays so wire can move
- Drive staples in brace posts so wire cannot move

### **Water Developments**

- Keep troughs clean and free of debris
- Repair leaks in troughs
- Level water troughs
- Replace broken trough braces
- Replace or install small animal escape devices in troughs
- Unplug pipelines if necessary
- Replace trough plugs if missing
- Replace broken pipes
- Waterlines should be buried to protect from livestock
- Clean and repair overflows
- Maintain spring head fence according to above specifications
- Clean spring boxes or debris and secure cover
- Drain water troughs and pipelines at the end of the season
- Maintain overflows from ponds, keep spillways clean and protected from washing out



**Maintenance responsibilities are listed below and shown on the attached map:**

<b>Map Number</b>	<b>Improvement</b>	<b>Description</b>	<b>Maintenance</b>	<b>Infra Number</b>
1	Ault BLM/BLM Forest Boundary Fence	Approximately 1 mile of 4 strand barbed wire and steel posts.	Corp of Presiding Bishopric	821041
2	Benmore/Vernon #1 Allotment Boundary Fence (Dutch Canyon/Harker)	1.93 miles of steel posts and 4 strand barbed wire.	Corp of Presiding Bishopric	821003
3	Benmore/Vernon #2 Allotment Boundary Fence (West Dutch/Kaiser and Harker)	2.23 miles of steel posts and 4 strand barbed wire.	Corp of Presiding Bishopric	821002
4	Benmore/Vernon #3 Allotment Boundary Fence (Benmore Pastures/Electric and Kaiser)	2.53 miles of wood posts, net wire, and 3 strand barbed wire.	Corp of Presiding Bishopric	821006
5	Benmore/Vernon #4 Allotment Boundary Fence (Bull Pasture/Electric)	1 mile of wood posts and 5 strand barbed wire.	Larson	821010
6	Benmore/Vernon #5 Allotment Boundary Fence (Bull Pasture/Diagonal)	0.36 miles of wood posts and 5 strand barbed wire.	Larson	821012
7	Benmore/Bennion #1 Allotment Boundary Fence (Lower Bennion/Middle Pasture)	1.53 miles of steel posts and 4 strand barbed wire and metal spiral stays.	Larson	821037
8	Benmore/Bennion #2 Allotment Boundary Fence (Ault South/Lower Bennion)	0.7 miles of wood and steel posts with 4 strand barbed wire and spiral metal stays.	Corp of Presiding Bishopric	821046



<b>Map Number</b>	<b>Improvement</b>	<b>Description</b>	<b>Maintenance</b>	<b>Infra Number</b>
9	Benmore/Little Valley #3 Allotment Boundary Fence	1.99 miles of steel posts and 4 strand barbed wire and metal spiral stays.	Larson	821007
10	Ault North/Lower Bennion Pasture Boundary Fence	1.02 miles of wood and steel posts with 4 strand barbed wire and spiral metal stays.	Corp of Presiding Bishopric	821043
11	Ault/Ault BLM Pasture Boundary Fence	1.19 miles of steel and wood posts with net wire and 1 strand barbed wire.	Corp of Presiding Bishopric	821044
12	Northeast/Ault North Pasture Boundary Fence	0.89 miles of steel posts and 4 strand barbed wire and metal spiral stays.	Larson	821031
13	Ault North/Ault South Pasture Boundary Fence	1.08 miles of steel posts with 4 strand barbed wire and wooden dancers.	Corp of Presiding Bishopric	821045
14	Northeast/Northwest Pasture Boundary Fence	0.97 miles of steel posts and 4 strand barbed wire.	Corp of Presiding Bishopric	821034
15	Northeast/Lower Bennion Pasture Boundary Fence	0.83 miles of steel posts and 4 strand barbed wire and metal spiral stays.	Corp of Presiding Bishopric	821040
16	Northeast Pasture/West Pheasant Pasture Fence	0.22 miles of steel posts and 4 strand barbed wire and metal spiral stays.	Larson	821033
17	Benmore Pastures/Northwest Pasture Boundary Fence	1.81 miles of wood posts with net wire and 3 strand barbed wire.	Corp of Presiding Bishopric	821036



<b>Map Number</b>	<b>Improvement</b>	<b>Description</b>	<b>Maintenance</b>	<b>Infra Number</b>
18	Bull Pasture/Northwest Pasture Boundary Fence	0.36 miles of wood posts and 4 strand barbed wire and metal spiral stays.	Larson	821011
19	South Horse Pasture Fence	0.02 miles. Does not include the portion were the guard stations use to be.	Larson	821008
20	Benmore Pasture Interior Fences	15.09 miles of wood posts with net wire and 3 strand barbed wire.	Castagno	821029
21	Benmore Pasture/Benmore Road Pasture Boundary Fence	0.5 miles along Benmore Road. 4 strand barbed wire and steel posts.	Larson	821029A
22	East Holding Pasture/35 Pasture Boundary Fence	0.32 miles of wood posts with net wire and 3 strand barbed wire.	Castagno	821027
23	East Holding Pasture/Middle Dutch Pasture Boundary Fence	0.56 miles of steel & wood posts with 4 strand barbed wire.	Larson	821028
24	West Dutch/35 Pasture Boundary Fence	1.17 miles of steel posts with 4 strand barbed wire and spiral stays.	Castagno	821004
25	Middle Dutch/35 Pasture Boundary Fence	1.04 miles of steel posts with 4 strand barbed wire.	Castagno	821005
26	Middle Dutch Pasture Division Fence	0.65 miles of steel posts with 3 strand barbed wire.	Larson	821022



<b>Map Number</b>	<b>Improvement</b>	<b>Description</b>	<b>Maintenance</b>	<b>Infra Number</b>
27	Middle/East Dutch #1 Pasture Boundary Fence	1.24 miles of wood and steel posts with 4 strand barbed wire and metal stays.	Larson	821025
28	Middle/East Dutch #2 Pasture Boundary Fence	1.08 miles of steel posts with 3 strand barbed wire and metal spiral stays.	Castagno	821026
29	Hidden Pasture/35 Pasture Boundary Fence	0.48 miles of steel posts with 4 strands barbed wire and metal spiral stays.	Corp of Presiding Bishopric	821016
30	Hidden Pasture/Middle Dutch Pasture Boundary Fence	1.03 miles of steel posts and 4 strand barbed wire.	Larson	821017
31	Hidden Pasture/West Dutch Pasture Boundary Fence	1.02 miles of steel posts and 4 strand barbed wire and metal spiral stays.	Larson	821023
32	Hidden Pasture/Dutch Canyon Pasture Boundary Fence	0.40 miles of wood posts and 4 strand barbed wire and metal spiral stays.	Larson	821024
33	West Dutch/Dutch Canyon Pasture Boundary Fence	0.75 miles of steel & wood posts with 4 strand barbed wire and metal spiral stays.	Castagno	821001
34	Dutch Canyon/Bennion Canyon Pasture Boundary Fence	1.75 miles of steel posts with 4 strand barbed wire and wood dancers.	Corp of Presiding Bishopric	821015
35	North Bennion Exclosure	2374 feet or 0.44 miles of steel posts with 4 strand barbed wire and metal spiral stays.	Castagno Larson	321032



Map Number	Improvement	Description	Maintenance	Infra Number
36	West Pheasant Pasture Fence	4747 feet or 0.9 miles of steel posts with 4 strand barbed wire and metal spiral stays.	Castagno Larson	321020
37	East Pheasant Pasture Fence	8606 feet or 1.63 miles of steel posts with 4 strand barbed wire and metal spiral stays.	Castagno Larson	321030
38	Northwest Pasture/Private Land Cattle Guard (Harker Road)	16 foot channel steel.	Tooele County	821CG1
39	Northeast Pasture/Private Land Cattle Guard (Benmore Road)	Replaced by county with larger cattleguard. Get updated information.	Tooele County	821CG2
40	Middle Dutch Pasture/Private Land Cattle Guard #1	14 foot channel steel.	Tooele County	821CG11
41	Middle Dutch Pasture/Private Land Cattle Guard #2	GPS new location to the west and get updated info.	Jim Ekker	821CG3
43	Benmore/Bennion #1 Allotment Boundary Fence Cattle Guard (Benmore Road) (Lower Bennion/Middle Pasture Boundary Fence)	Replaced by county with larger cattleguard. Get updated information.	Tooele County	821CG4
44	Benmore/Vernon #2 Allotment Boundary Fence Cattle Guard #1 (Harker Road) (West Dutch/Harker)	12 foot channel steel.	Forest Service	821CG5



Map Number	Improvement	Description	Maintenance	Infra Number
45	Benmore/Vernon #2 Allotment Boundary Fence Cattle Guard #2 (Harker Road) (West Dutch/Kaiser)	Replaced by county with larger cattleguard. Get updated information.	Tooele County	821CG6
46	Benmore/Vernon #4 Allotment Boundary Fence Cattle Guard (Harker Road) (Bull Pasture/Electric)	Replaced by county with larger cattleguard. Get updated information.	Tooele County	821CG7
47	Benmore/Little Valley #3 Allotment Boundary Fence (Non-System Road)	Need information.	Forest Service	821CG12
48	Northeast Pasture/Benmore Road Pasture Boundary Fence Cattle Guard	Replaced by county with larger cattleguard. Get updated information.	Tooele County	821CG8
49	West Dutch/35 Pasture Boundary Fence Cattle Guard	14 foot channel steel.	Tooele County	821CG9
50	Middle Dutch/35 Pasture Boundary Fence Cattle Guard	14 foot channel steel.	Tooele County	821CG10
51	Middle Dutch Pasture Division Fence Cattle Guard	Replaced by county with larger cattleguard. Get updated information.	Tooele County	821CG14
52	Benmore Corrals	Wood timbers and metal panels with loading chute and scales.	Castagno Larson Corp of Presiding Bishopric	821021



Map Number	Improvement	Description	Maintenance	Infra Number
53	Harker/Benmore Pipeline Point of Diversion	Two 2 foot long, perforated pipes. Diverts water from Harker Creek.	Corp of Presiding Bishopric	821008D
54	Harker/Benmore Pipeline	7.43 miles of 1.5 inch diameter polyethylene pipe.	Corp of Presiding Bishopric	821008P
55	Harker/Benmore Pipeline Trough #1 (Dutch Canyon)	583 gallon, 14 foot by 4 foot by 18 inch galvanized steel Powder River trough.	Corp of Presiding Bishopric	821008T1
56	Harker/Benmore Pipeline Trough #2 (West Dutch)	100 gallon steel army surplus casing. 46 inches by 20 inches by 12 inches.	Corp of Presiding Bishopric	821008T2
57	Harker/Benmore Pipeline Trough #3 (West Dutch/Pasture 35)	2350 gallon, round fiberglass trough. 14 foot diameter by 2 feet deep.	Corp of Presiding Bishopric	821008T3
58	Harker/Benmore Pipeline Trough #4 (West Dutch)	583 gallon Powder River trough. 12 feet by 46 inches by 12 inches.	Corp of Presiding Bishopric	821008T4
59	Harker/Benmore Pipeline Trough #6 (Benmore Pastures)	Tire trough.	Corp of Presiding Bishopric	821008T6
60	Harker/Benmore Pipeline Trough #7 (Benmore Pastures)	Round 10 foot diameter fiberglass trough.	Corp of Presiding Bishopric	821008T7
61	Harker/Benmore Pipeline Trough #8 (Benmore Pastures)	Round 10 foot diameter fiberglass trough.	Corp of Presiding Bishopric	821008T8
62	Harker/Benmore Pipeline Trough #9 (Benmore Pastures)	12 foot cement trough.	Corp of Presiding Bishopric	821008T9



<b>Map Number</b>	<b>Improvement</b>	<b>Description</b>	<b>Maintenance</b>	<b>Infra Number</b>
63	Bennion Creek Pipeline Point of Diversion	Perforated pipe. Diverts water from Bennion Creek.	Castagno	821014D
64	Bennion Creek Riparian Enclosure	1.09 miles of steel posts with 4 strand barbed wire.	Castagno	821014F
65	Bennion Creek Pipeline	7.60 miles of 1.5 inch diameter polyethylene pipe.	Castagno	821014P
66	Bennion Creek Pipeline Trough #1 (Dutch Canyon/Bennion Canyon)	495 gallon Powder River trough. 12 feet by 46 inches by 20 inches.	Castagno	821014T1
67	Bennion Creek Pipeline Trough #3 (Hidden Pasture)	450 gallon, half round steel trough. 12 feet by 34 inches by 18 inches.	Castagno	821014T3
68	Bennion Creek Pipeline Trough #4 (Bennion Canyon)	495 gallon Powder River trough. 12 feet by 46 inches by 20 inches.	Castagno	821014T4
69	Bennion Creek Pipeline Trough #5 (East Dutch)	495 gallon Powder River trough. 12 feet by 46 inches by 20 inches.	Castagno	821014T5
70	Bennion Creek Pipeline Trough #6 (South Middle Dutch)	1243 gallon fiberglass trough. 14 feet by 2 feet by 7 inches.	Castagno	821014T6
71	Bennion Creek Pipeline Trough #7 (East Dutch)	235 gallon Powder River trough. 12 feet by 30 inches by 15 inches.	Castagno	821014T7
72	Bennion Creek Pipeline Trough #8 (North Middle Dutch)	1243 gallon fiberglass trough. 14 feet by 2 feet by 7 inches.	Castagno	821014T8



<b>Map Number</b>	<b>Improvement</b>	<b>Description</b>	<b>Maintenance</b>	<b>Infra Number</b>
73	Bennion Creek Pipeline Overflow Pond	Earthen pond. 80 feet by 80 feet by 10 feet.	Castagno	821014PO
74	Bennion Creek Pipeline Trough #10 (East Holding Pasture)	583 gallon Powder River trough. 12 feet by 4 feet by 3 feet.	Castagno	821014T10
75	Bennion Creek Pipeline Trough #11 (Benmore Pastures)	650 gallon fiberglass trough. 14 feet by 4 feet by 18 inches.	Castagno	821014T11
76	Bennion Creek Pipeline Trough #12 (Benmore Pastures)	650 gallon fiberglass trough. 14 feet by 4 feet by 18 inches.	Castagno	821014T12
77	Bennion Creek Pipeline Trough #13 (Benmore Pastures)	650 gallon fiberglass trough. 14 feet by 4 feet by 18 inches.	Castagno	821014T13
78	Bennion Creek Pipeline Trough #14 (Benmore Pastures)	650 gallon fiberglass trough. 14 feet by 4 feet by 18 inches.	Castagno	821014T14
79	Vernon Reservoir Pipeline	0.98 miles of 1.5 inch diameter polyethylene pipe.	Larson	821011P2
80	Vernon Reservoir Pipeline (Ault South)	0.95 miles of 1.5 inch polyethylene pipe. From trough on the Bennion Allotment.	Corp of Presiding Bishopric	821011P3
81	Vernon Reservoir Pipeline (Ault North)	0.31 miles of 1.5 inch polyethylene pipe. From trough on the Benmore Allotment.	Corp of Presiding Bishopric	821011P4
82	Vernon Reservoir Pipeline Trough #5 (Ault South)	2 fiberglass troughs. 14 feet by 7 feet by 2 feet. 1243 gallons each.	Corp of Presiding Bishopric	821011T5



Map Number	Improvement	Description	Maintenance	Infra Number
83	Vernon Reservoir Pipeline Overflow Pond #1 (Ault South)	10 foot by 15 foot by 6 inch earth overflow pond.	Corp of Presiding Bishopric	821011PO1
84	Vernon Reservoir Pipeline Trough #6 (Lower Bennion)	650 gallon fiberglass trough. 14 feet by 4 feet by 18 inches.	Larson	821011T6
85	Vernon Reservoir Pipeline Trough #7 (Northeast)	750 gallon round galvanized trough. 8 feet by 2 feet.	Larson	821011T7
86	Vernon Reservoir Pipeline Trough #8 (Ault North)	2 fiberglass troughs. 14 feet by 7 feet by 2 feet. 1243 gallons each.	Corp of Presiding Bishopric	821011T8
87	Vernon Reservoir Pipeline Overflow Pond #2 (Ault North)	10 foot by 15 foot by 6 inch earth overflow pond.	Corp of Presiding Bishopric	821011PO2
88	Vernon Irrigation Company Pipeline	0.18 miles of 1.5 inch diameter polyethylene pipe.	Larson	821018P1
89	Vernon Irrigation Company Pipeline Trough #3 (Egan Knoll)	12 foot cement trough.	Larson	821018T3
90	Vernon Irrigation Company Pipeline	0.17 miles of 1.5 inch diameter polyethylene pipe.	Larson	821018P2
91	Vernon Irrigation Company Pipeline Trough #4 (Northeast)	Tire Trough.	Larson	821018T4
92	Vernon Irrigation Company Pipeline Trough #5 (Northwest)	650 gallon fiberglass trough. 14 feet by 4 feet by 18 inches.	Larson	821018T5



Map Number	Improvement	Description	Maintenance	Infra Number
93	Snow Hollow Headbox	Need to GPS.	Larson	821047S
94	Snow Hollow Pipeline	0.62 miles of 1.5 inch diameter polyethylene pipe.	Larson	821047P1
95	Snow Hollow Trough	12 foot by 4 foot aluminum trough.	Larson	821047T1
96	Muddy Pond Spring Enclosure	0.11 miles of steel posts with 4 strand barbed wire and metal spiral stays.	Larson	821013F
97	Muddy Pond	12000 gallon earthen pond. 60 feet by 40 feet by 10 feet.	Larson	821013
98	Neil C. Frischknecht Enclosure	Steel & wood posts with 4 strand barbed wire.	FS Range	821RA9
99	Benmore Pastures Range Enclosure #2	189 feet of steel posts with barbed wire.	FS Range	821RA2
100	Benmore Pastures Range Enclosure #10	201 feet of steel posts with barbed wire.	FS Range	821RA11
101	Benmore Pastures Range Enclosure #3	201 feet of steel posts with barbed wire.	FS Range	821RA3
102	Benmore Pastures Range Enclosure #4	208 feet of steel posts with barbed wire.	FS Range	821RA4
103	Benmore Pastures Range Enclosure #8	835 feet of wood posts with net wire.	FS Range	821RA8
104	Benmore Pastures Range Enclosure #7	210 feet of steel posts with barbed wire.	FS Range	821RA7



<b>Map Number</b>	<b>Improvement</b>	<b>Description</b>	<b>Maintenance</b>	<b>Infra Number</b>
105	Vernon Creek Exclosure	2826 feet of steel posts with 4 strand barbed wire and metal spiral stays.	FS Wildlife	821WL8
106	Lower Dutch Water Pan and Exclosure (Northwest Pasture-Bennion Pipeline)	Water pan enclosed with 174 feet of steel posts with 4 strand barbed wire and metal spiral stays.	FS Wildlife	821WL36A 821WL36B
107	North Harker Water Pan and Exclosure (Northwest Pasture-Harker Pipeline)	Water pan enclosed with 37 feet of steel posts with 4 strand barbed wire and metal spiral stays.	FS Wildlife	821WL37A 821WL37B
108	Bennion Wildlife Exclosure and Overflow Pond #4 (East Dutch Pasture-Vernon Irrigation Company Pipeline)		FS Wildlife	821WL12 821WL12B
109	West Pasture Exclosure and Overflow Pond (Benmore Pastures)	Storage tanks and overflow pond enclosed with 688 feet of steel posts with 4 strand barbed wire and metal spiral stays.	FS Wildlife	821WL6 821WL6B
110	East Pasture Exclosure and Overflow Pond (Benmore Pastures- Bennion Pipeline)	Overflow pond enclosed with 663 feet of steel posts with 4 strand barbed wire and metal spiral stays.	FS Wildlife	821WL34A 821WL34B
111	Bennion Wildlife Exclosure and Overflow Pond #1 (East Dutch Pasture- Bennion Pipeline)	Overflow pond enclosed with 290 feet of steel posts with 5 strand barbed wire and metal spiral stays.	FS Wildlife	821WL3 821WL3B



Map Number	Improvement	Description	Maintenance	Infra Number
112	Bennion Wildlife Exclosure and Overflow Pond #2 (East Dutch Pasture- Bennion Pipeline)		FS Wildlife	821WL4 821WL4B
113	Bennion Wildlife Exclosure and Overflow Pond #3 (North Middle Dutch Pasture- Bennion Pipeline)	Overflow pond enclosed with 482 feet of steel posts with 4 strand barbed wire and metal spiral stays.	FS Wildlife	821WL5 821WL5B
114	Dutch Creek Guzzler and Exclosure Fence (Dutch Canyon Pasture)	Fiberglass guzzler enclosed with 923 feet of steel posts with 4 strand barbed wire and metal spiral stays.	FS Wildlife	821WL9A 821WL9B
115	Grove Hollow Guzzler and Exclosure Fence (Dutch Canyon Pasture)	Fiberglass guzzler enclosed with 931 feet of steel posts with 4 strand barbed wire and metal spiral stays.	FS Wildlife	821WL2A 821WL2B
116	Grove Hollow Exclosure (Dutch Canyon Pasture)	0.63 miles of steel posts with 4 strand barbed wire and metal spiral stays.	FS Wildlife	821WL1
117	Wildlife Exclosure (Bennion Canyon Pasture)	0.081 miles of steel posts with 4 strand barbed wire and metal spiral stays.	FS Wildlife	821WL38
118	Ault Guzzler (Ault South Pasture)	Fiberglass guzzler enclosed with 108 feet of fence. Water storage tank.	Forest Service Wildlife	818WL4A 818WL4B 818WL1

We look forward to working with you this coming grazing season. If you have any questions or concerns please contact Linda Appel at 801-794-6767.



**BENMORE ALLOTMENT ANNUAL OPERATING INSTRUCTIONS 2025**

**SIGNATURES:**

\_\_\_\_\_  
**PERMITTEE**

\_\_\_\_\_  
**DATE**

\_\_\_\_\_  
**PERMITTEE**

\_\_\_\_\_  
**DATE**

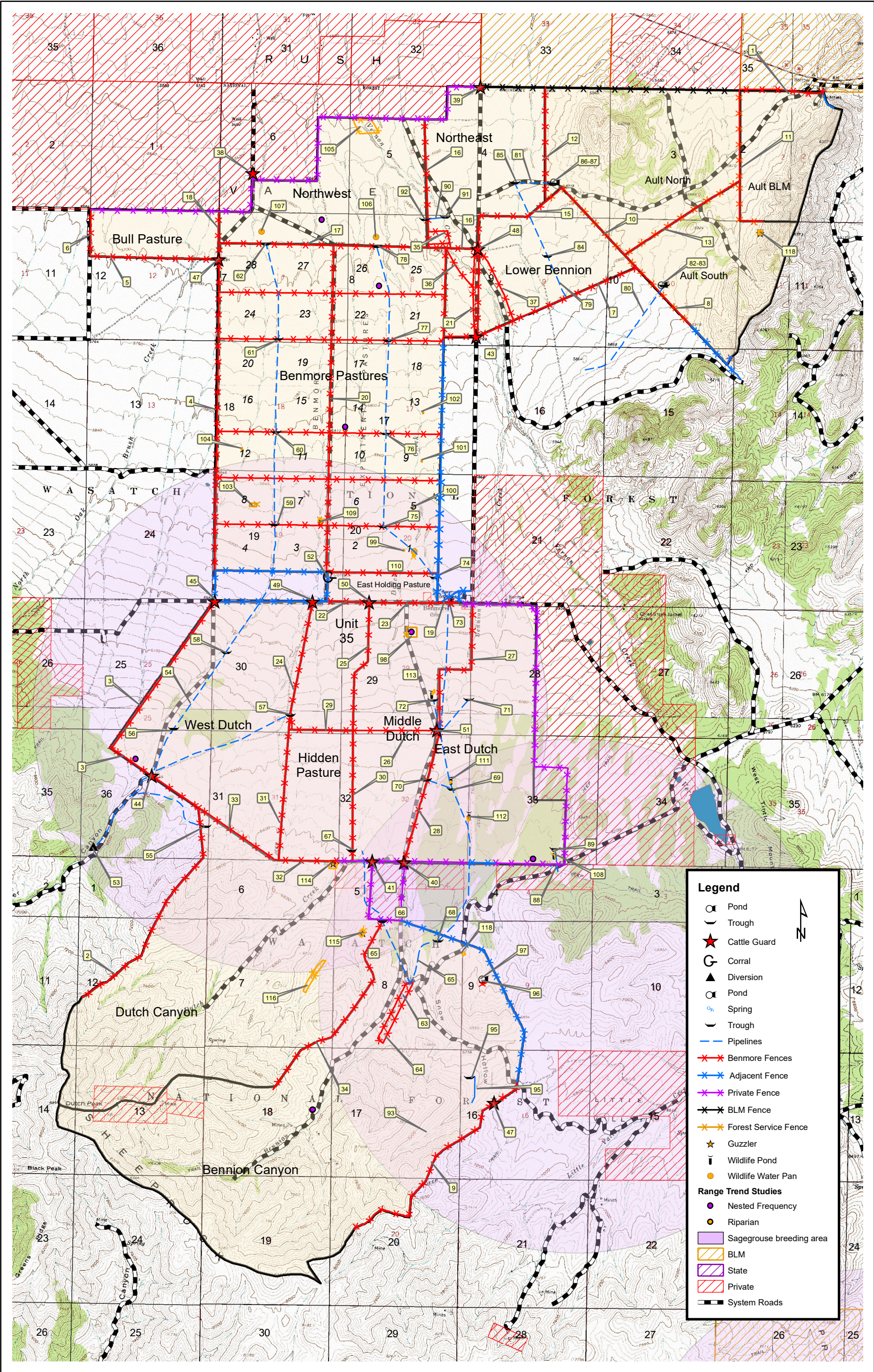
\_\_\_\_\_  
**PERMITTEE**

\_\_\_\_\_  
**DATE**

\_\_\_\_\_  
**SPANISH FORK DISTRICT RANGER**

\_\_\_\_\_  
**DATE**





Benmore Allotment 2025

Uinta-Watch-Cache National Forest  
Spanish Fork Ranger District

