

Uinta-Wasatch-Cache National Forest – Spanish Fork Ranger District

BILLIES MOUNTAIN ALLOTMENT RMU #00803

ANNUAL OPERATING INSTRUCTIONS

2025



PERMITTED USE

Permittee	Permitted Use	Authorized Use
Carson Cattle LLC	222 Cow/Calf May 15 to July 7	222 Cow/Calf May 15 to July 7

GRAZING SYSTEM

The Billies Mountain Allotment is managed with a two-pasture rest rotation. Each year one pasture is grazed and the other pasture is rested. The grazing rotation for the 2025 season is listed below:

Pasture: Billies West	Livestock Numbers: Rest	Dates of Use: Rest	Days: 0
Pasture: Billies East	Livestock Numbers: 222 Cow/Calf	Dates of Use: May 15 to July 7	Days: 47

- *The above rotation dates are flexible based on utilizations listed below*

FOREST PLAN AND ALLOTMENT MANAGEMENT PLAN REQUIREMENTS

The Uinta National Forest Plan and Resource Management Plan, which was approved in 2003, and the Allotment Management Plan for Billies Mountain, which was approved on July 6, 1998, list the following standards, guidelines, and objectives:



Upland Forage Utilization

Standard: Limit grazing to meet the following utilization levels on non-riparian vegetation types based on the annual average of the current year's growth.

Forage Utilization Standards

Vegetation type General Uplands and Winter Range Upland shrublands (sagebrush, snowberry, mountain mahogany species, cliffrose, bitterbrush, saltbrush, and mountain brush)	Forage Utilization Very Early - Early Seral 40%	Forage Utilization Mid – Late Seral 60%
Vegetation type General Uplands and Winter Range Grasslands	Forage Utilization Very Early - Early Seral 45%	Forage Utilization Mid – Late Seral 65%

It is the permittee's responsibility to make sure allowable use standards are not exceeded. When utilization standards are met the permittee will be required to remove cattle from the entire pasture or allotment. Use of the rest unit will not be allowed.

Riparian Forage Utilization

Standard: Limit grazing to meet the following utilization levels within Riparian Habitat Conservation Areas (RHCAs) based on the average current year's growth.

Utilization Standards by RCHA Class

RCHA Class	Minimum Percent of Stream Length	Minimum Greenline Stubble Height by Season of Use – Very Early to Early in Early Season	Minimum Greenline Stubble Height by Season of Use – Very Early to Early in Late Season	Minimum Greenline Stubble Height by Season of Use – Mid to Late Seral in Early Season	Minimum Greenline Stubble Height by Season of Use – Mid to Late Seral in Late Season
Riparian Class III	70%	3 inches	4 inches	2 inches	3 inches



RCHA Class	Minimum Percent of Stream Length	Forage Utilization Limits by Season of Use – Very Early to Early in Early Season	Forage Utilization Limits by Season of Use – Very Early to Early in Late Season	Forage Utilization Limits by Season of Use – Mid to Late in Early Season	Forage Utilization Limits by Season of Use – Mid to Late in Late Season
Riparian Class III	70%	60%	50%	65%	55%
RCHA Class	Minimum Percent of Stream Length	Willow Utilization by Season of Use – Very Early to Early in Early Season	Willow Utilization by Season of Use – Very Early to Early in Late Season	Willow Utilization by Season of Use – Mid to Late in Early Season	Willow Utilization by Season of Use – Mid to Late in Late Season
Riparian Class III	70%	Not applicable	35%	Not applicable	50%

Note: For minimum Greenline Stubble Height the height of key species (palatable, hydrophytic species indicative of mid to late seral riparian plant communities, or as indicated in the site-specific Allotment Management Plan). If acceptable “key species” are absent from a site, only utilization standards shall be used.

Note: For Willow Utilization the percent is for total average annual growth.

Note: There are no willow utilization standards for early season use.

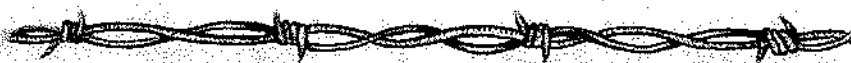
It is the permittee’s responsibility to make sure allowable use standards are not exceeded, especially in riparian areas. Permittees are encouraged to herd cattle away from riparian areas since they are generally the first areas utilized. If use along riparian areas reaches Forest Plan Standards and Guidelines, even if forage remains on the uplands, permittees will be required to remove cattle from the entire unit or allotment. Use of the rest unit will not be allowed.

Riparian Habitat Conservation Areas (RCHA)

Portions of *watersheds* where *riparian*-dependent resources receive primary emphasis and management activities are subject to specific standards and guidelines. RHCA’s include traditional *riparian* corridors, *wetlands*, *perennial* and *intermittent* streams, and other areas that help maintain the integrity of aquatic *ecosystems*. There are three RHCA classes of varying widths offering varying levels of protection: class I with widths extending 300 feet from each edge of the waterbody (600 feet total); class II with widths extending 200 feet from each edge of the waterbody (400 feet total); and class III with widths extending 100 feet from each edge of the waterbody (200 feet total).

Additional Forest Plan Standards and Guidelines

Guideline: Maintain adequate ground cover to filter runoff and prevent detrimental erosion in Riparian Habitat Conservation Areas (RHCA’s).



Riparian Habitat Conservation Area (RHCA) Ground Cover Requirements

RHCA	Minimum Ground Cover Requirement	Minimum Percent of RHCA to Meet Requirement
Class I	90% of Potential	90%
RHCA	Minimum Ground Cover Requirement	Minimum Percent of RHCA to Meet Requirement
Class II	80% of Potential	80%
RHCA	Minimum Ground Cover Requirement	Minimum Percent of RHCA to Meet Requirement
Class III	80% of Potential	70%

Standard: Locate livestock salt grounds outside of Riparian Habitat Conservation Areas (RHCA's).

Standard: Locate new livestock troughs, tanks, and holding facilities out of Riparian Habitat Conservation Areas (RHCA's). For existing livestock handling facilities inside RHCA's, assure that facilities do not prevent attainment of aquatic Forest Plan management direction. Modify, relocate, or close existing facilities where aquatic Forest Plan management direction cannot be met.

Guideline: Minimize trailing livestock through Riparian Habitat Conservation Areas (RHCA's). Close or relocate livestock driveways to minimize impacts to RHCA's.

Guideline: Subject to valid existing rights, free-flowing water and associated riparian vegetation communities should be retained at developed spring sites. If possible, existing spring developments should be modified to return water to riparian ecosystems within the source drainage.

Guideline: Avoid equipment operation in stream courses, open water, seeps, or springs. If use of equipment in such areas is required, impacts should be minimized.

Guideline: Limit equipment operation in Riparian Habitat Conservation Areas (RHCA's). If the use of equipment in these areas is required, incorporate additional mitigation to minimize adverse impacts.

Guideline: Implement intensive grazing management that provides periodic rest designed to achieve and maintain desired vegetation community composition and structure.

Guideline: Maintain at least 70 percent of potential effective ground cover to provide nutrient cycling and protect the soil from erosion in excess of soil loss tolerance limits.

Standard: Provide wildlife escape ramps in all developed water sources.

Guideline: Provide for wildlife movement through and/or around structures or project sites such as fences, spring developments, guzzlers, roads, and ditches.



Guideline: Defer livestock grazing in areas disturbed by wildland fire or other natural events until vegetation has reestablished sufficiently, but for no less than two growing seasons.

Standard: Only certified noxious weed-free hay or feed is allowed on National Forest land, including hay or feed for use by recreational livestock. Any materials such as hay, straw, or mulch that are used for rehabilitation and reclamation activities shall be certified weed-free.

Allotment Management Plan Objectives

Reach at least the mid-seral ecological status on all vegetative sites including uplands and riparian areas.

OTHER REQUIREMENTS

Actual Use: Please complete the enclosed actual use record form at the close of the grazing season and return to the Spanish Fork Ranger District before December 1.

Salt: Salt will be used as a tool to improve livestock distribution. Place salt where use is light, such as ridge tops and areas away from water. Avoid stock tanks, wet meadows, and creek bottoms. Place salt away from roads and developed trails.

State Livestock Health Laws: All owners of livestock must comply with state livestock health laws.

Dead Livestock: Livestock which die within 100 yards of public roads or live water will be disposed of in a manner approved by the District Ranger or his/her representative.

Off Road Vehicle Use: Off road vehicle use for reconstruction or maintenance of range improvements (when hauling materials only) listed in these operating instructions is hereby authorized. ATV's or trucks can be used to check water. ATV's or trucks can be used to haul salt on system and non-system roads or trails. No new trails or roads can be made. Use of off-road vehicles is limited to periods of time when weather and ground conditions are such that rutting, and soil movement will not occur. Any other off road vehicle use shall be approved in advance (location and time) by the District Ranger or his/her representative. Absent this approval, travel restrictions described in the Forest Supervisors Order of May 27, 2005, and in the Uinta National Forest Summer Travel Map (2007) apply.

Payment of Fees: The permittee will not allow owned or controlled livestock to be on Forest Service-administered lands unless the fees specified in the Bill for Collection are paid.

Turnout: Turnout will not occur prior to range readiness (8 (c) on permit). Range readiness is measured by soil moisture and plant growth. Soils may be damp but should be firm to avoid excessive compaction or hummocking due to livestock.

Inspections/Monitoring: Allotment/pasture inspections will be performed periodically throughout the grazing season by Forest Service personnel. Livestock distribution, correct livestock location, numbers and identification, structural improvement maintenance, and utilization levels will be evaluated during these site visits. If you wish to accompany Forest Service personnel on these inspections, please contact the Rangeland Management Specialist.



Compliance: The permittee is responsible for compliance with the terms and conditions of the grazing permit, allotment management plan, operating instructions, and the directions of the Forest Officer in charge. Failure to meet these terms and conditions is violation of the grazing permit.

SCHEDULED ACTIVITIES

- ✓ The permittee will remove the old Elmers trough and all the other junk (except the wood) from the forest.

MAINTENANCE RESPONSIBILITIES

The permittee is responsible for all improvements assigned in the term grazing permits and listed in these operating instructions. Maintenance shall mean the timely repair of management facilities to a condition adequate to perpetuate the life of the facility and to serve the purpose intended. All improvements will be maintained to the standard for which they were constructed. Maintenance includes permittee responsibility for furnishing the materials needed for repairs. Allotment boundary fences must be maintained before cattle enter the allotment. Pasture division fences and water developments must be maintained before cattle can enter each pasture.

Posts, Poles and Bucks

- Replace broken or rotten posts, bucks, braces and poles
- Notch poles and attach to posts or bucks with spikes
- Straighten and re-tamp loose wood brace and line posts
- Straighten or replace bent steel posts

Wire

- Replace broken wire if necessary
- Splice wire with double strand 12-gauge minimum size barbed wire or smooth wire
- Wrap end of broken wires back around itself to form eye
- Place splicing wire through eye and wrap back around itself
- Make at least three wraps in each eye
- Make wraps adjacent to each other.
- Re-space wire where spacing has been altered
- Measure spacing from ground line in inches:
 - 4-wire fence: 16 inches, 24 inches, 32 inches, 42 inches
 - 3-wire fence: 18 inches, 28 inches, 40 inches
- Re-stretch wires tight with consideration for contraction and expansion
- Wire will not be twisted or kinked

Stays

- Replace broken or missing stays
- Straighten bent wire stays



Trees

- Remove all fallen trees from fences
- Do not use logs and/or brush instead of poles or wire
- If wire is attached to trees, nail wood slab to tree and staple wire to slab

Gates

- Stretch wire so gates will not sag, but easily open and close
- Make gate loops with smooth wire

Wire Fasteners

- Replace missing staples and steel post clips
- Drive staples diagonally into bucks, braces and stays
- Drive staples in wood posts, bucks and stays so wire can move
- Drive staples in brace posts so wire cannot move

Water Developments

- Keep troughs clean and free of debris
- Repair leaks in troughs
- Level water troughs
- Replace broken trough braces
- Replace or install small animal escape devices in troughs
- Unplug pipelines if necessary
- Replace trough plugs if missing
- Replace broken pipes
- Waterlines should be buried to protect from livestock
- Clean and repair overflows
- Maintain spring head fence according to above specifications
- Clean spring boxes of debris and secure cover
- Drain water troughs and pipelines at the end of the season
- Maintain overflows from ponds, keep spillways clean and protected from washing out

Maintenance responsibilities are listed below and shown on the attached map:



Map Number	Improvement	Description	Maintenance	Infra Number
1	Billies Mountain/ Diamond Fork Allotment Boundary Fence (Part of fence on Richard Childs Private Land)	1.05 miles of wood posts and net wire and 0.71 miles of steel posts with 4 strands of barbed wire. Part of fence is on Childs private land.	Permittee	803029
2	Billies East/Billies West Pasture Boundary Fence	1.44 miles of steel posts with 4 strands of barbed wire.	Permittee	803025
3	Billies East Subdivision Fence	0.23 miles of wood posts with net wire	Permittee	803027
4	Elmers Spring Water Development	Water collection is 6 inch buried perforated pipe with gravel. Water collection area is enclosed with 788 feet of letdown fence with steel posts and 4 strands of barbed wire. 360 feet of 1 ½ diameter polyethylene pipe. Water is run into Elmers Pond. Trough is abandoned	Permittee	803010S 803010F 803010P 803010T
5	Elmers Pond	40,000 gallon earthen pond	Permittee	803009
6	Power Line Pond	50 x 60 x 2 foot earthen pond	Permittee	803001
7	Power Line Water Development	Undeveloped spring enclosed with 85 feet of wood posts and net wire. Evidence of polyethylene pipe Not certain where or if there is a point of delivery. Possibly Elmers Pond.	None	803003S 803003F 803003P
8	Cripple Cow Pond	50 x 25 x 5 foot earthen pond	Permittee	803002
9	Bear Jug Pond #1	30,000 gallon earthen pond	Permittee	803012
10	Bear Jug Pond #2	3000 gallon earthen pond	Permittee	803013



Map Number	Improvement	Description	Maintenance	Infra Number
11	Billies East Pasture Pond	20,000 gallon earthen pond	Permittee	803020
12	Wasum Pond #1	10,000 gallon earthen pond	Permittee	803018
13	Wasum Pond #2	30,000 gallon earthen pond	Permittee	803019
14	Hole Pond #1	15,000 gallon earthen pond	Permittee	803015
15	Hole Pond #2	10,000 gallon earthen pond	Permittee	803016
16	Asphalt Mine Pond	3000 gallon earthen pond	Private Land	803PR2
17	Seven Oaks Pond	40,000 gallon earthen pond	Private Land	803PR3
18	Red Hollow Pond	50 x 40 x 4 foot earthen pond	Private Land	803PR7
19	State Highway 6 Fence	3.35 miles of steel posts with net wire and metal stays in two separate sections	UDOT	803PR1
20	State Highway 6 Fence Cattle Guard #1 (Billies Mountain)	Three seven-foot sections I beams	UDOT	803CG1
21	State Highway 6 Fence Cattle Guard	Three seven-foot sections I beams	UDOT	803CG2
22	Childs #1 Forest Boundary Fence (Off line)	1.32 miles of wood posts with net wire	Private Land	803PR4
23	Childs #2 Forest Boundary Fence (Off line)	0.35 miles of steel posts with 4 strands of barbed wire on north end. 0.39 miles of wood post and net wire on south.	Private Land	803PR5



Map Number	Improvement	Description	Maintenance	Infra Number
24	North Forest Boundary Fence (Off line)	3.09 miles of wood posts and net wire. 0.44 miles of wood posts with 4 strands of bard wire. 0.46 miles of steel posts with 4 strands of barbed wire and metal stays.	Private Land	803PR6
25	Billies Mountain Guzzler		Forest Service Wildlife	8WL8031A

We look forward to working with you this coming grazing season. If you have any questions or concerns, please contact Linda Appel at 801-794-6767.

BILLIES MOUNTAIN ALLOTMENT ANNUAL OPERATING INSTRUCTIONS 2025

Signatures:

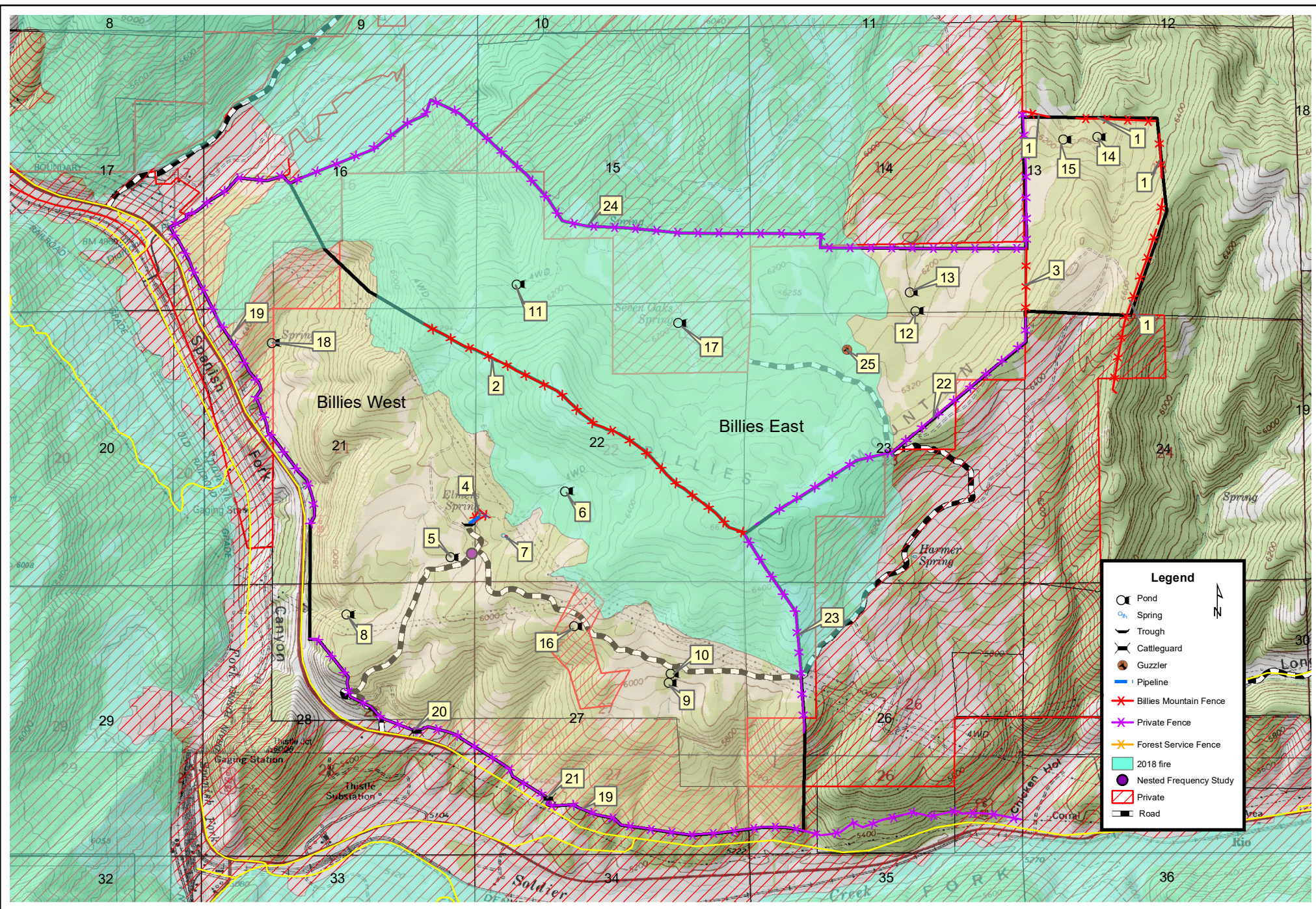

 PERMITTEE

3-24-2025
 DATE


 SPANISH FORK DISTRICT RANGER

03 - 24 - 2025
 DATE





Billies Mountain Allotment - 2025



Uinta-Watch-Cache National Forest
Spanish Fork Ranger District

