

Uinta-Wasatch-Cache National Forest – Spanish Fork Ranger District

TABBYUNE ALLOTMENT RMU #00809

ANNUAL OPERATING INSTRUCTIONS

2025



PERMITTED USE

| Permittee | Permitted Use | Authorized Use |
|------------------|--|---------------------------------------|
| Scott H. Olsen | 1000 ewe/lamb June 16 to October 23 | 958 ewe/lamb June 16 to October 23 |

GRAZING SYSTEM

The Tabbyune Allotment is managed in a four-unit rest rotation system. The grazing rotation for the 2025 season is listed below:

| Pasture: | Livestock Numbers: | Dates of Use: | Days: |
|-----------------|---------------------------|---------------------------|--------------|
| Trail Hollow | 958 ewe/lamb | June 16 to July 26 | 40 |
| Pasture: | Livestock Numbers: | Dates of Use: | Days: |
| Johnson Fok | 958 ewe/lamb | July 27 to August 4 | 40 |
| Pasture: | Livestock Numbers: | Dates of Use: | Days: |
| Tabbyune Creek | 958 ewe/lamb | September 5 to October 23 | 36 |
| Pasture: | Livestock Numbers: | Dates of Use: | Days: |
| White River | REST | REST | 0 |

- *The above rotation dates are flexible based on utilizations listed below in the Forest Plan and Allotment Management Plan Requirements*

The Avintaquin Band will trail through the Tabbyune Allotment a minimum of two days on the way to the Ashley National Forest at the beginning of the grazing season and a minimum of two days through the Tabbyune Allotment in fall.

FOREST PLAN AND ALLOTMENT MANAGEMENT PLAN REQUIREMENTS

The Uinta National Forest Plan and Resource Management Plan, which was approved in 2003, and the Allotment Management Plan (AMP) for the Tabbyune Allotment, which was approved on June 23, 1993, and the AMP amendment dated February 13, 1998, list the following standards, guidelines, and objectives:



Upland Forage Utilization

Standard: Limit grazing to meet the following utilization levels on non-riparian vegetation types based on the annual average of the current year's growth.

Forage Utilization Standards

| Vegetation type General Uplands and Winter Range | Forage Utilization Very Early - Early Seral | Forage Utilization Mid – Late Seral |
|--|--|--|
| Upland shrublands (sagebrush, snowberry, mountain mahogany species, cliffrose, bitterbrush, saltbrush, and mountain brush) | 40% | 60% |
| Vegetation type General Uplands and Winter Range | Forage Utilization Very Early - Early Seral | Forage Utilization Mid – Late Seral |
| Grasslands | 45% | 65% |
| Forestwide | | |
| Vegetation type | Forage Utilization Very Early - Early Seral | Forage Utilization Mid – Late Seral |
| Sub-alpine shrublands | 25% | 35% |
| Vegetation type | Forage Utilization Very Early - Early Seral | Forage Utilization Mid – Late Seral |
| Sub-alpine grasslands | 40% | 45% |

Riparian Forage Utilization

Standard: Limit grazing to meet the following utilization levels within Riparian Habitat Conservation Areas (RHCAs) based on the average current year's growth.

Utilization Standards by RCHA Class

| Greenline Stubble Height | | | | | |
|--|---|--|---|--|---|
| RCHA Class | Minimum Percent of Stream Length | Minimum Greenline Stubble Height by Season of Use – Very Early to Early in Early Season | Minimum Greenline Stubble Height by Season of Use – Very Early to Early in Late Season | Minimum Greenline Stubble Height by Season of Use – Mid to Late Seral in Early Season | Minimum Greenline Stubble Height by Season of Use – Mid to Late Seral in Late Season |
| Right Fork White River, and Lower Middle Fork White River Class 1 | 90% | | | | |



| | | | | | |
|---|---|--|---|--|---|
| | | 5 inches | 6 inches | 4 inches | 5 inches |
| RCHA Class | Minimum Percent of Stream Length | Minimum Greenline Stubble Height by Season of Use – Very Early to Early in Early Season | Minimum Greenline Stubble Height by Season of Use – Very Early to Early in Late Season | Minimum Greenline Stubble Height by Season of Use – Mid to Late Seral in Early Season | Minimum Greenline Stubble Height by Season of Use – Mid to Late Seral in Late Season |
| Left Fork of Right Fork White River Class II | 80% | 4 inches | 5 inches | 3 inches | 4 inches |
| RCHA Class | Minimum Percent of Stream Length | Minimum Greenline Stubble Height by Season of Use – Very Early to Early in Early Season | Minimum Greenline Stubble Height by Season of Use – Very Early to Early in Late Season | Minimum Greenline Stubble Height by Season of Use – Mid to Late Seral in Early Season | Minimum Greenline Stubble Height by Season of Use – Mid to Late Seral in Late Season |
| Remainder of Streams Class III | 70% | 3 inches | 4 inches | 2 inches | 3 inches |
| Forage Utilization Limits | | | | | |
| RCHA Class | Minimum Percent of Stream Length | Forage Utilization Limits by Season of Use – Very Early to Early in Early Season | Forage Utilization Limits by Season of Use – Very Early to Early in Late Season | Forage Utilization Limits by Season of Use – Mid to Late in Early Season | Forage Utilization Limits by Season of Use – Mid to Late in Late Season |
| Class 1 | 90% | 45% | 35% | 55% | 45% |



| | | | | | |
|---------------------------|---|---|--|---|--|
| RCHA Class | Minimum Percent of Stream Length | Forage Utilization Limits by Season of Use – Very Early to Early in Early Season | Forage Utilization Limits by Season of Use – Very Early to Early in Late Season | Forage Utilization Limits by Season of Use – Mid to Late in Early Season | Forage Utilization Limits by Season of Use – Mid to Late in Late Season |
| Class II | 80% | 50% | 40% | 60% | 50% |
| RCHA Class | Minimum Percent of Stream Length | Forage Utilization Limits by Season of Use – Very Early to Early in Early Season | Forage Utilization Limits by Season of Use – Very Early to Early in Late Season | Forage Utilization Limits by Season of Use – Mid to Late in Early Season | Forage Utilization Limits by Season of Use – Mid to Late in Late Season |
| Class III | 70% | 60% | 50% | 65% | 55% |
| Willow Utilization | | | | | |
| RCHA Class | Minimum Percent of Stream Length | Willow Utilization by Season of Use – Very Early to Early in Early Season | Willow Utilization by Season of Use – Very Early to Early in Late Season | Willow Utilization by Season of Use – Mid to Late in Early Season | Willow Utilization by Season of Use – Mid to Late in Late Season |
| Riparian Class 1 | 90% | Not applicable | 35% | Not applicable | 50% |
| RCHA Class | Minimum Percent of Stream Length | Willow Utilization by Season of Use – Very Early to Early in Early Season | Willow Utilization by Season of Use – Very Early to Early in Late Season | Willow Utilization by Season of Use – Mid to Late in Early Season | Willow Utilization by Season of Use – Mid to Late in Late Season |
| Riparian Class II | 80% | Not applicable | 35% | Not applicable | 50% |
| RCHA Class | Minimum Percent | Willow Utilization by | Willow Utilization by | Willow Utilization by | Willow Utilization by |



| Riparian Class III | of Stream Length | Season of Use – Very Early to Early in Early Season | Season of Use – Very Early to Early in Late Season | Season of Use – Mid to Late in Early Season | Season of Use – Mid to Late in Late Season |
|--------------------|-------------------------|--|---|--|---|
| | 70% | Not applicable | 35% | Not applicable | 50% |

Note: For minimum Greenline Stubble Height the height of key species (palatable, hydrophytic species indicative of mid to late seral riparian plant communities, or as indicated in the site-specific Allotment Management Plan). If acceptable “key species” are absent from a site, only utilization standards shall be used.

Note: For Willow Utilization the percent is for total average annual growth.

Note: There are no willow utilization standards for early season use.

It is the permittee’s responsibility to make sure allowable use standards are not exceeded, especially in riparian areas. Permittees are encouraged to herd sheep away from riparian areas since they are generally the first areas utilized. If use along riparian areas reaches Forest Plan Standards and Guidelines, even if forage remains on the uplands, permittees will be required to remove sheep from the entire unit or allotment. Use of the rest unit will not be allowed.

Riparian Habitat Conservation Areas (RCHA)

Portions of *watersheds* where *riparian*-dependent resources receive primary emphasis and management activities are subject to specific standards and guidelines. RHCAs include traditional *riparian* corridors, *wetlands*, *perennial* and *intermittent* streams, and other areas that help maintain the integrity of aquatic *ecosystems*. There are three RHCA classes of varying widths offering varying levels of protection: class I with widths extending 300 feet from each edge of the waterbody (600 feet total); class II with widths extending 200 feet from each edge of the waterbody (400 feet total); and class III with widths extending 100 feet from each edge of the waterbody (200 feet total). For a list of the criteria used to determine the RHCA class for each stream or waterbody on the Forest, see Appendix D of the 2003 Forest Plan.

Additional Forest Plan Standards and Guidelines

Guideline: Maintain adequate ground cover to filter runoff and prevent detrimental erosion in Riparian Habitat Conservation Areas (RHCAs).

Riparian Habitat Conservation Area (RCHA) Ground Cover Requirements

| RHCA | Minimum Ground Cover Requirement | Minimum Percent of RHCA to Meet Requirement |
|-------------|---|--|
| Class I | 90% of Potential | 90% |
| RHCA | Minimum Ground Cover Requirement | Minimum Percent of RHCA to Meet Requirement |
| Class III | 80% of Potential | 70% |



Standard: Locate livestock salt grounds outside of Riparian Habitat Conservation Areas (RHCAs).

Standard: Locate new livestock troughs, tanks, and holding facilities out of Riparian Habitat Conservation Areas (RHCAs). For existing livestock handling facilities inside RHCAs, assure that facilities do not prevent attainment of aquatic Forest Plan management direction. Modify, relocate, or close existing facilities where aquatic Forest Plan management direction cannot be met.

Guideline: Minimize trailing livestock through Riparian Habitat Conservation Areas (RHCAs). Close or relocate livestock driveways to minimize impacts to RHCAs.

Standard: Locate sheep bed grounds outside of Riparian Habitat Conservation Areas (RHCAs).

Guideline: Subject to valid existing rights, free-flowing water and associated riparian vegetation communities should be retained at developed spring sites. If possible, existing spring developments should be modified to return water to riparian ecosystems within the source drainage.

Guideline: Avoid equipment operation in stream courses, open water, seeps, or springs. If use of equipment in such areas is required, impacts should be minimized.

Guideline: Limit equipment operation in Riparian Habitat Conservation Areas (RHCAs). If the use of equipment in these areas is required, incorporate additional mitigation to minimize adverse impacts.

Guideline: Implement intensive grazing management that provides periodic rest designed to achieve and maintain desired vegetation community composition and structure.

Guideline: Maintain at least 70 percent of potential effective ground cover to provide nutrient cycling and protect the soil from erosion in excess of soil loss tolerance limits.

Guideline: Sheep should graze through foraging areas only once and should not return to the same area at a later date during the same grazing season.

Guideline: Limit use of traditional bed grounds and salting areas to twice on the same bed ground during a grazing season. Some areas in unsatisfactory condition may require closure of bed grounds to improve vegetative conditions.

Standard: Provide wildlife escape ramps in all developed water sources.

Guideline: Provide for wildlife movement through and/or around structures or project sites such as fences, spring developments, guzzlers, roads, and ditches.

Guideline: Defer livestock grazing in areas disturbed by wildland fire or other natural events until vegetation has reestablished sufficiently, but for no less than two growing seasons.

Standard: Only certified noxious weed-free hay or feed is allowed on National Forest land, including hay or feed for use by recreational livestock. Any materials such as hay, straw, or mulch that are used for rehabilitation and reclamation activities shall be certified weed-free.



Allotment Management Plan Objectives

Maintain mid to late seral vegetative conditions on the allotment.

OTHER REQUIREMENTS

Camps: Campsites will be kept clean and sanitary. Dispose of refuse correctly. All unburnable garbage must be removed from the Forest and disposed of. Do not bury.

Actual Use: Please complete the enclosed actual use record form at the close of the grazing season and return to the Spanish Fork Ranger District before December 1.

Salt: Salt will be used as a tool to improve livestock distribution. Place salt where use is light, such as ridge tops and areas away from water. Avoid stock tanks, wet meadows, and creek bottoms. Salt should be placed at least 100 yards from water sources and riparian areas so that sheep will not spend excessive time near water. Place salt away from roads and developed trails. **All salt bags are to be removed from Forest Service administered lands.**

State Livestock Health Laws: All owners of livestock must comply with state livestock health laws.

Dead Livestock: Livestock which die within 100 yards of public roads or live water will be disposed of in a manner approved by the District Ranger or his/her representative.

Off Road Vehicle Use: Off road vehicle use for reconstruction or maintenance of range improvements (when hauling materials only) listed in these operating instructions is hereby authorized. ATV's or trucks can be used to check water. ATV's or trucks can be used to haul salt on system and non-system roads or trails. No new trails or roads can be made. Use of off-road vehicles is limited to periods of time when weather and ground conditions are such that rutting, and soil movement will not occur. Any other off road vehicle use shall be approved in advance (location and time) by the District Ranger or his/her representative. Absent this approval, travel restrictions described in the Forest Supervisors Order of May 27, 2005, and in the Uinta National Forest Summer Travel Map (2007) apply.

Payment of Fees: The permittee will not allow owned or controlled livestock to be on Forest Service-administered lands unless the fees specified in the Bill for Collection are paid.

Turnout: Turnout will not occur prior to range readiness (8 (c) on permit). Range readiness is measured by soil moisture and plant growth. Soils may be damp but should be firm to avoid excessive compaction or hummocking due to livestock.

Inspections/Monitoring: Allotment/pasture inspections will be performed periodically throughout the grazing season by Forest Service personnel. Livestock distribution, correct livestock location, numbers and identification, structural improvement maintenance, and utilization levels will be evaluated during these site visits. If you wish to accompany Forest Service personnel on these inspections, please contact the Rangeland Management Specialist.



Compliance: The permittee is responsible for compliance with the terms and conditions of the grazing permit, allotment management plan, operating instructions, and the directions of the Forest Officer in charge. Failure to meet these terms and conditions is violation of the grazing permit.

SCHEDULED ACTIVITIES

- ✓ There are no scheduled activities on the allotment this year.

MAINTENANCE RESPONSIBILITIES

The permittee is responsible for all improvements assigned in the term grazing permits and listed in these operating instructions. Maintenance shall mean the timely repair of management facilities to a condition adequate to perpetuate the life of the facility and to serve the purpose intended. All improvements will be maintained to the standard for which they were constructed. Maintenance includes permittee responsibility for furnishing the materials needed for repairs. Allotment boundary fences must be maintained before cattle enter the allotment. Pasture division fences and water developments must be maintained before cattle can enter each pasture.

Posts, Poles and Bucks

- Replace broken or rotten posts, bucks, braces and poles
- Notch poles and attach to posts or bucks with spikes
- Straighten and re-tamp loose wood brace and line posts
- Straighten or replace bent steel posts

Wire

- Replace broken wire if necessary
- Splice wire with double strand 12-gauge minimum size barbed wire or smooth wire
- Wrap end of broken wires back around itself to form eye
- Place splicing wire through eye and wrap back around itself
- Make at least three wraps in each eye
- Make wraps adjacent to each other.
- Re-space wire where spacing has been altered
- Measure spacing from ground line in inches:
 - 4-wire fence: 16 inches, 24 inches, 32 inches, 42 inches
 - 3-wire fence: 18 inches, 28 inches, 40 inches
- Re-stretch wires tight with consideration for contraction and expansion
- Wire will not be twisted or kinked

Stays

- Replace broken or missing stays
- Straighten bent wire stays

Trees

- Remove all fallen trees from fences
- Do not use logs and/or brush instead of poles or wire



- If wire is attached to trees, nail wood slab to tree and staple wire to slab

Gates

- Stretch wire so gates will not sag, but easily open and close
- Make gate loops with smooth wire

Wire Fasteners

- Replace missing staples and steel post clips
- Drive staples diagonally into bucks, braces and stays
- Drive staples in wood posts, bucks and stays so wire can move
- Drive staples in brace posts so wire cannot move

Water Developments

- Keep troughs clean and free of debris
- Repair leaks in troughs
- Level water troughs
- Replace broken trough braces
- Replace or install small animal escape devices in troughs
- Unplug pipelines if necessary
- Replace trough plugs if missing
- Replace broken pipes
- Waterlines should be buried to protect from livestock
- Clean and repair overflows
- Maintain spring head fence according to above specifications
- Clean spring boxes or debris and secure cover
- Drain water troughs and pipelines at the end of the season
- Maintain overflows from ponds, keep spillways clean and protected from washing out

Maintenance responsibilities are listed below and shown on the attached map:

| Map Number | Improvement | Description | Maintenance | Infra Number |
|-------------------|--------------------|--------------------|--------------------|---------------------|
| 1 | Tabbyune Corral | Wood corrals | Permittee | 809001 |

Changes in these annual operating instructions must be approved in advance by the Forest Service. We look forward to working with you this coming grazing season.



TABBYUNE ALLOTMENT ANNUAL OPERATING INSTRUCTIONS 2025

Signatures:

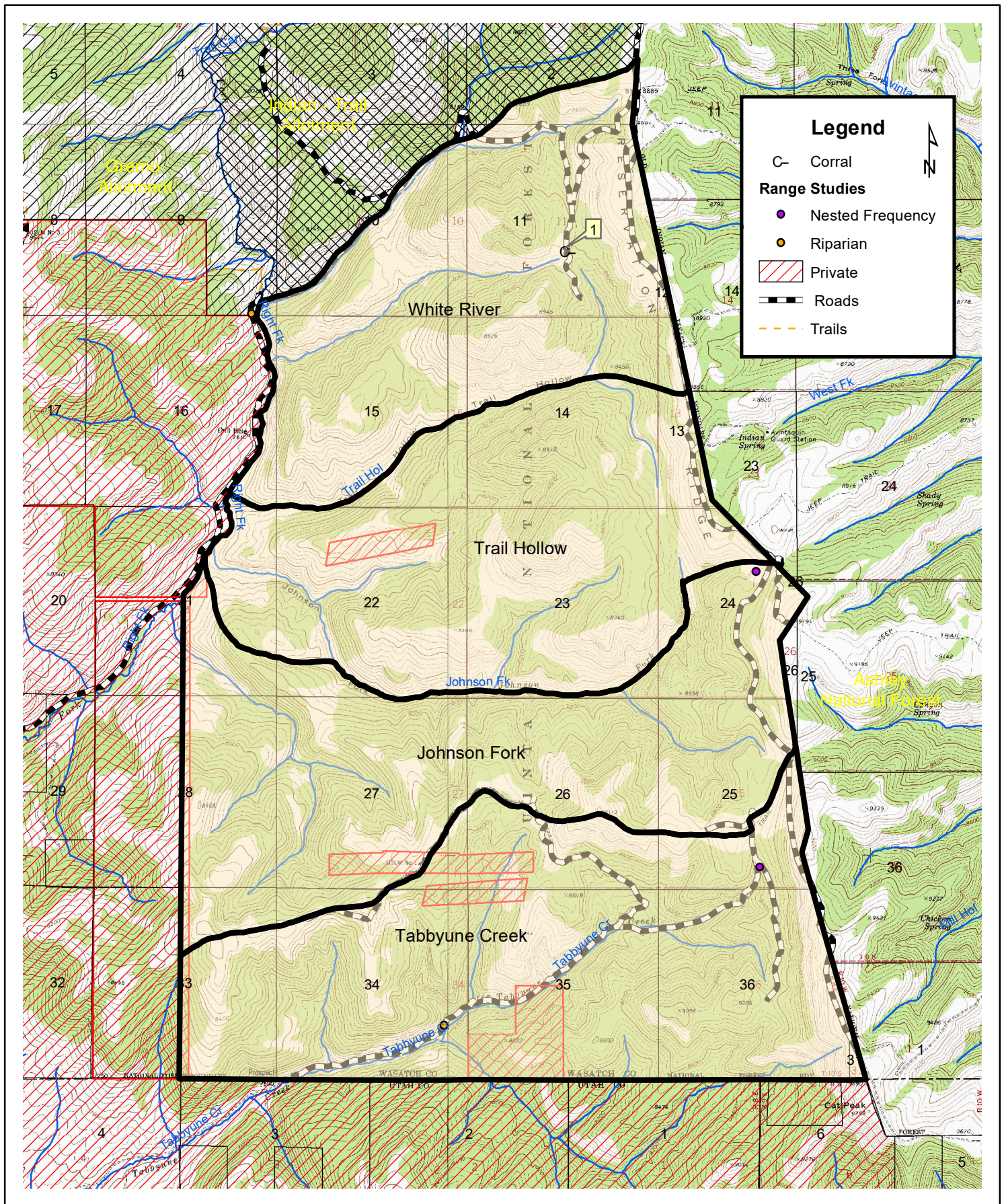
PERMITTEE

DATE

Acting SPANISH FORK DISTRICT RANGER

DATE





Tabbyune Allotment 2025

