



# Mokelumne Wilderness

## Eldorado National Forest Amador Ranger District



### Welcome to the Mokelumne Wilderness!

Here you will find over 100 miles of hiking trails which will take you from deep canyons to 10,000 foot peaks. To protect fragile ecosystems, reduce visual and environmental impacts and help maintain healthy water

### Things to Remember



- ◆ A valid **wilderness permit** is required for entry into Mokelumne Wilderness for overnight stays. Permits not only provide important recreation use data, they have also proven invaluable in search and rescue emergencies. Day permits not required.
- ◆ Use is open to hikers and packstock. **Mechanized and motorized equipment** such as bicycles, hanggliders, over-snow vehicles, strollers, chainsaws or game carts is prohibited.
- ◆ Maximum **group size** is 8 persons for overnight stay and 12 for day use. Wilderness is intended to provide opportunities for solitude. If your group size exceeds these limits, contact the Amador Ranger District or Carson Pass Information Station for alternatives outside of Mokelumne Wilderness.
- ◆ **Camping** within 100 feet of any stream or lake or 100 feet from any designated trail is prohibited. Camping within 300 feet of **Emigrant Lake** is not permitted in order to protect and promote the restoration of the shorelines. Camping is limited in the Carson Pass Management Area to designated, assigned campsites at Fourth of July, Round Top and Winnemucca Lakes only.
- ◆ Leaving refuse, debris or **litter** is prohibited. Pack it in, Pack it out! Toilet paper must be buried or packed out.

◆ **Campfires are no longer allowed within the Mokelumne Wilderness.** Camp stoves are permissible. Dead and downed wood is critical habitat for many alpine species in the Mokelumne Wilderness, and the decomposition of wood plays a critical role in the nutritive value of the soils in which high-altitude vegetation must survive. You must obtain a **California campfire permit** to use your camp stove which is available online at: [www.readyforwildfire.org/permits/campfire-permit/](http://www.readyforwildfire.org/permits/campfire-permit/).

◆ **Human waste** must be disposed of 200 feet or more from campsites, water sources or trails. Dig a hole at least 6" deep to bury human and canine waste. Digging animals will expose waste buried in shallow holes.

◆ **Washing** with soap in a stream, lake or other water source is prohibited. Insect repellents, sunscreens and soaps (even biodegradable soaps) all contaminate water sources. Please help protect aquatic life and drinking water quality by rinsing off contaminants before swimming and by washing cookware well away from water sources.

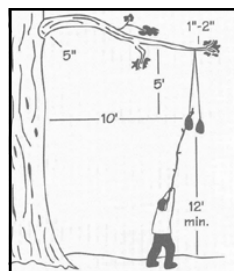
◆ **Damaging or removing** any natural or historic feature in the wilderness is not allowed. Please leave wildflowers and historical relics for all to enjoy, and avoid trampling delicate lakeshore vegetation.

### Bears & Other Critters



Black bears are active in areas near the Mokelumne Wilderness. As a result of the availability of improperly stored human food, greater numbers of bears remain active at higher elevations than in the past. Bears have extremely keen noses and are attracted to food smells as well as to the scents of personal products such as toothpaste and deodorant. Please remember that the forest is the bear's natural

environment. Protect yourself by preventing the unnatural contact of bears with humans by using bear canisters for food storage, or by hanging your food using the counterbalancing method.



- ◆ Balance the weight in food bags equally.
- ◆ Hoist the first sack up.
- ◆ Tie second sack as high on rope as possible, leaving a loop.
- ◆ Push into place with a long stick.
- ◆ Pull down by hooking loop.

Hanging your food will discourage other critters such as Yellow-bellied Marmots from getting your food. Remember to empty your pack of any attractive items. It is a good idea to leave the zippers on your backpack and tent open to allow curious critters a chance to explore without damaging your gear.

### Dogs



Pet owners are responsible for the actions of their pets and for the proper disposal of dog waste. Dogs inside the wilderness must be under the immediate control of the owner. Dogs off-leash can threaten wildlife or present a hazard to the safety or convenience of other visitors. Handlers are required to physically restrain their dogs on a leash no longer than six feet throughout the duration of their visit to the Carson Pass Management Area. **For alternatives to the CPMA which are better suited for dogs**, inquire at the Carson Pass Information Station or the Amador District Office.

### Recreational Stock Use



**Hitching, tethering or hobbling** a horse or other saddle or pack animal is prohibited within 200 feet of a water source or within 100 feet of a campsite, or in violation of posted instructions.

**Tying to Trees** -- Do not tie stock directly to trees except for loading, unloading, or short rest breaks while traveling.

**Camping Restrictions** -- In the Mokelumne Canyon and below Telephone Gulch in the Lower Summit City Canyon camping with overnight recreational stock is restricted to the following areas:

- ◆ In the **Munson Meadow/ Camp Irene/ Lake Valley Corridor** camping with stock is permitted only at Camp Irene and is limited to one stock group at a time.
- ◆ In the **Summit City Canyon** from Telephone Gulch to the end of the maintained system trail where it crosses Summit City Creek.
- ◆ From the **Hermit Valley** trailhead to approximately 1/2 mile below **Deer Creek**.

**Length of Stay** -- 2 nights

**Group Size** -- 4 animals per group.

**Feed** -- Supplemental weed free feed or processed feed, such as alfalfa pellets or crimped oats must be carried and used.

**Round Top Special Interest Area** -- Stock is required to remain on trails and no grazing is permitted in the area. This will protect the botanical values for which this area was designated.

### Drinking Water



Treat all water by boiling or filtering through a portable water filter. The microorganisms *Giardia lamblia* and *Cryptosporidia* may be found in even the most remote mountain lakes and streams, and cause intense gastrointestinal distress, including diarrhea and abdominal cramps. The organisms contaminate water sources through the fecal matter of infected mammals (including humans).

USDA is an equal opportunity provider and employer.

# Carson Pass Management Area (CPMA)

## Things To Remember



◆ **Campfires are not allowed at any time in the Mokelumne Wilderness.** Camp stoves are permissible. You must obtain a **California campfire permit** to use your camp stove which is available online at: [www.readyforwildfire.org/permits/campfire-permit/](http://www.readyforwildfire.org/permits/campfire-permit/).

◆ **Camping** is allowed only in designated campsites in the CPMA. Permits for camping in these sites will be issued on a first-come first-served basis at the Carson Pass Information Station in the summer

## Restoration Projects and Designated Campsites



*We need your help to protect fragile areas!*

The popularity of some wilderness destinations results in damage to the delicate vegetation of shorelines and meadow areas. Many restoration sites are formerly used camping areas which are now closed due to their proximity to water and fragile meadow areas. Please do your part by not walking or camping in these restored areas.



**Round Top Lake**

To promote the re-vegetation of these areas, specific campsites have been designated at Round Top, Winnemucca and Fourth of July Lakes. These maps illustrate the locations of the designated sites.

Designated campsites within the Carson Pass Management Area are numbered and assigned with your permit on a first-come, first-served basis only.

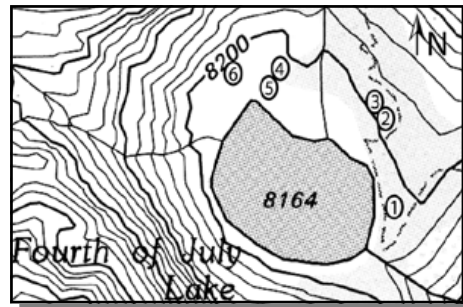
**At each campsite a numbered wooden post has been placed to identify the site. You must be camped at the site corresponding to your overnight permit for your permit to be valid.**

or from the Amador Ranger District Office in the winter.

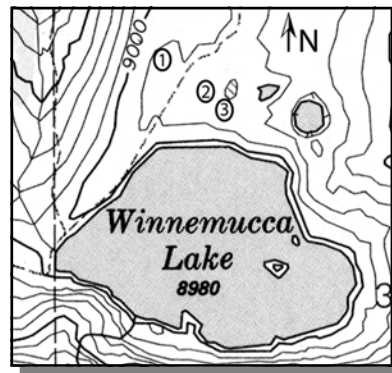
◆ From Memorial Day Weekend through Labor Day Weekend, an **overnight stay limit** of 2 nights is in effect for Round Top and Winnemucca and 3 nights for Fourth of July Lake.

◆ **Winter** -- Snow camping is not restricted to assigned sites when there is at least one foot of snow on the ground. Minimum distances from watersheds still apply. Permit still required.

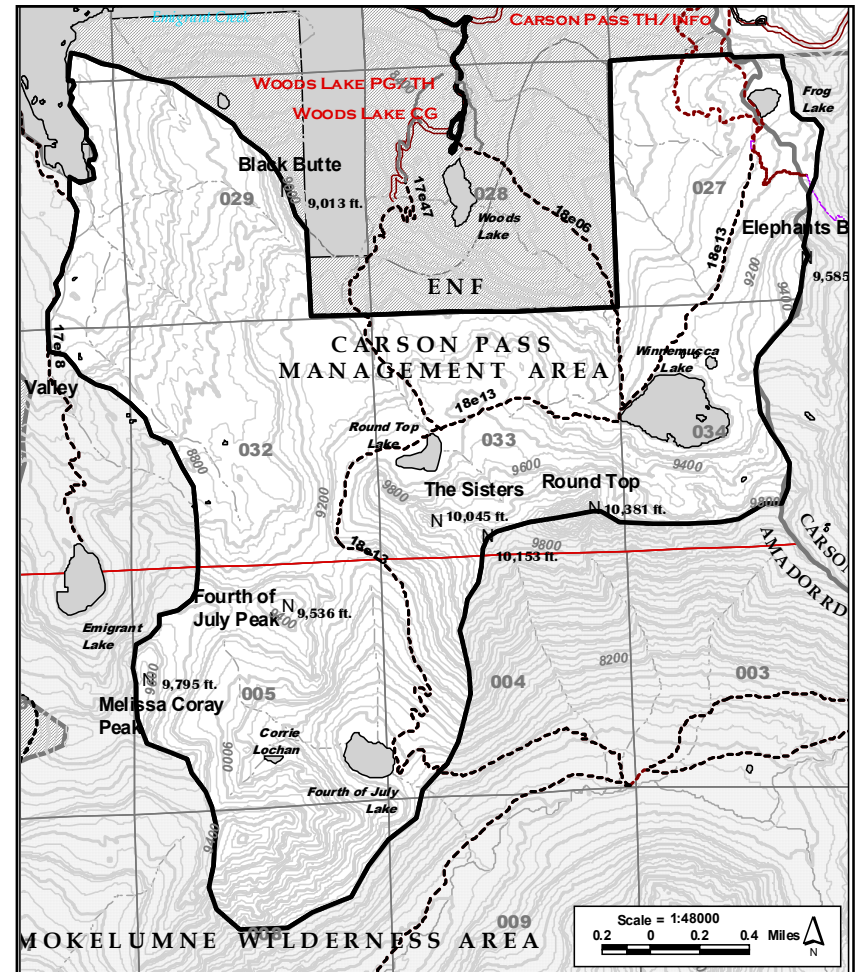
◆ **Trailhead Day Use Fee** -- During the summer a \$5.00 day use fee is charged at the Carson Pass, Carson Pass Overflow, and Meiss trailheads. The concession charges \$8 at Woods Lake trailhead. A season day use pass can be purchased for \$20.00 that applies to FS operated trailheads. During the



**Fourth of July Lake**



**Winnemucca Lake**



Permits and Information may be obtained at the following offices:

### Eldorado National Forest

[www.fs.usda.gov/eldorado](http://www.fs.usda.gov/eldorado)

- Carson Pass Information Station

Summer, Hwy 88 at Carson Pass

- Amador Ranger District Office

209-259-3774 (Pioneer, CA)

### Stanislaus National Forest

[www.fs.usda.gov/stanislaus](http://www.fs.usda.gov/stanislaus)

209-532-3671 (Sonora, CA)

- Calaveras Ranger District Office

209-295-4251 (Hathaway Pines, CA)

### - Alpine Station

Summer, Hwy 4 east of Bear Valley

### Toiyabe National Forest

[www.fs.usda.gov/htnf](http://www.fs.usda.gov/htnf)

- Carson Ranger District Office

775-882-2766 (Carson City, NV)

- Bridgeport Ranger District Office

760-932-7070 (Bridgeport, CA)

- Markleeville Chamber of Commerce and Forest Service

530-694-2911 (Markleeville, CA)