

## **Appendix A – Maps**

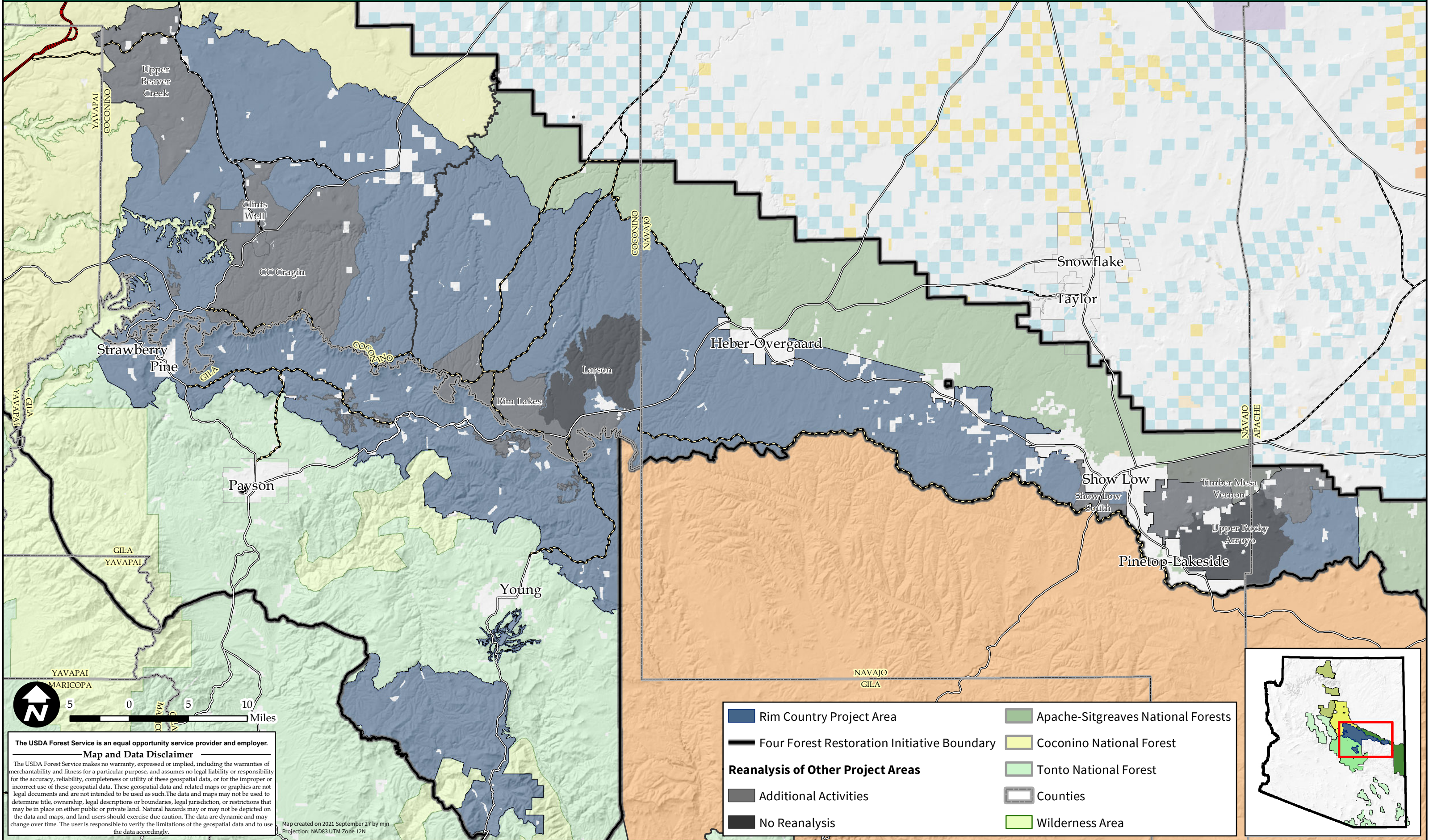
Note: Due to the larger page size for the maps, Appendix A is provided in a separate file. Viewers of the electronic version of the FEIS can find the eleven maps listed under Appendix A – Map Packet on the Rim Country Project page of the 4FRI Planning website at this address:

<https://www.fs.usda.gov/detail/4fri/planning/?cid=stelprd3837085>.

Appendix A includes the following maps:

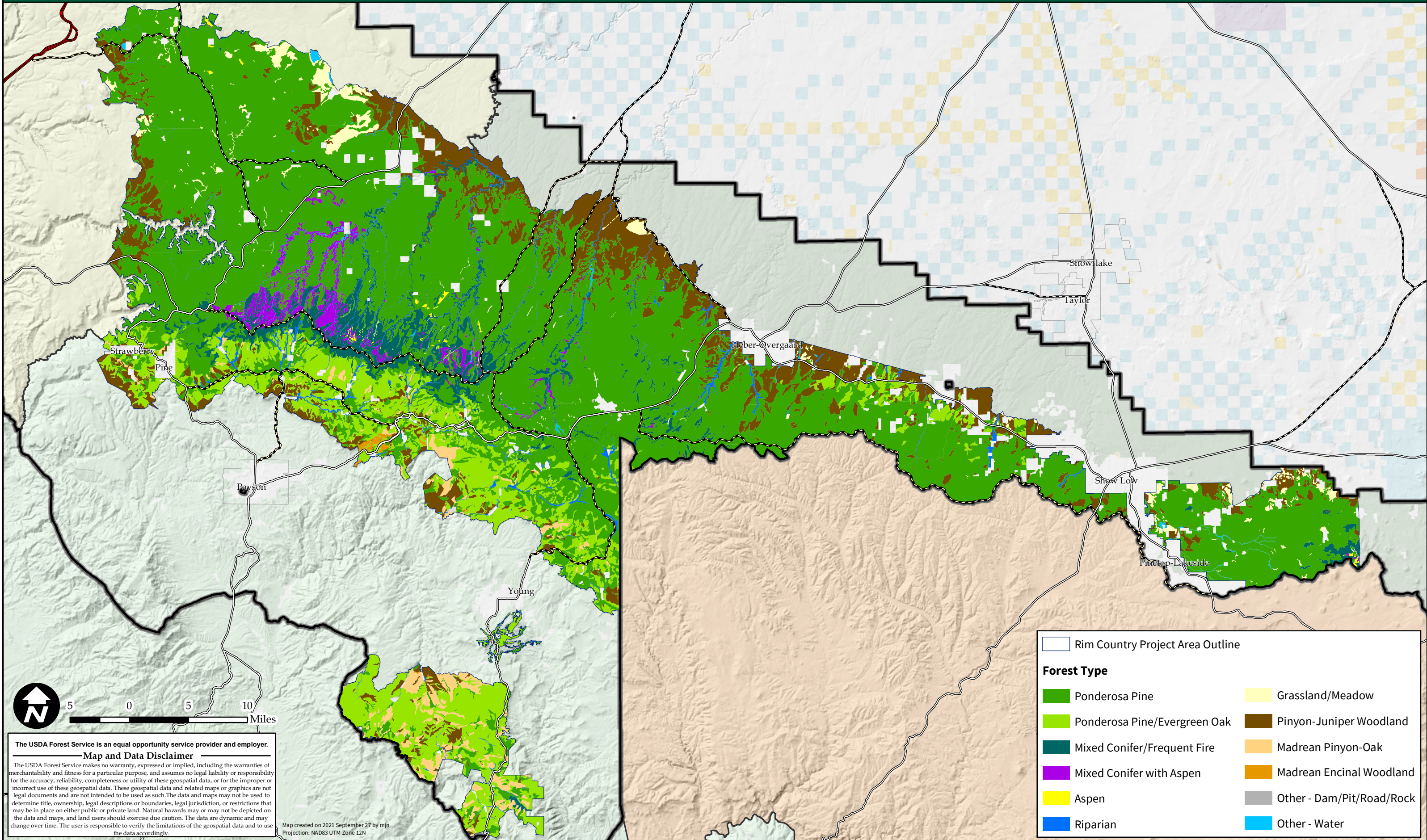
- Map 1: Project Area
- Map 2: Forest Types
- Map 3: Forest Types within WUI and Critical Infrastructure Buffer
- Map 4: Grassland/Wet Meadow/Riparian Restoration
- Map 5: Stream Restoration
- Map 6: In-Woods Processing Sites
- Map 7: Rock Pits
- Map 8: Alternative 2 – Modified Proposed Action
- Map 9: Alternative 3 – Focused Alternative
- Map 10: Alternative 2 – Modified Proposed Action within WUI and Critical Infrastructure Buffer
- Map 11: Alternative 3 – Focused Alternative within WUI and Critical Infrastructure Buffer





**The USDA Forest Service is an equal opportunity service provider and employer.**  
**Map and Data Disclaimer**  
 The USDA Forest Service makes no warranty, expressed or implied, including the warranties of merchantability and fitness for a particular purpose, and assumes no legal liability or responsibility for the accuracy, reliability, completeness or utility of these geospatial data, or for the improper or incorrect use of these geospatial data. These geospatial data and related maps or graphics are not legal documents and are not intended to be used as such. The data and maps may not be used to determine title, ownership, legal descriptions or boundaries, legal jurisdiction, or restrictions that may be in place on either public or private land. Natural hazards may or may not be depicted on the data and maps, and land users should exercise due caution. The data are dynamic and may change over time. The user is responsible to verify the limitations of the geospatial data and to use the data accordingly.

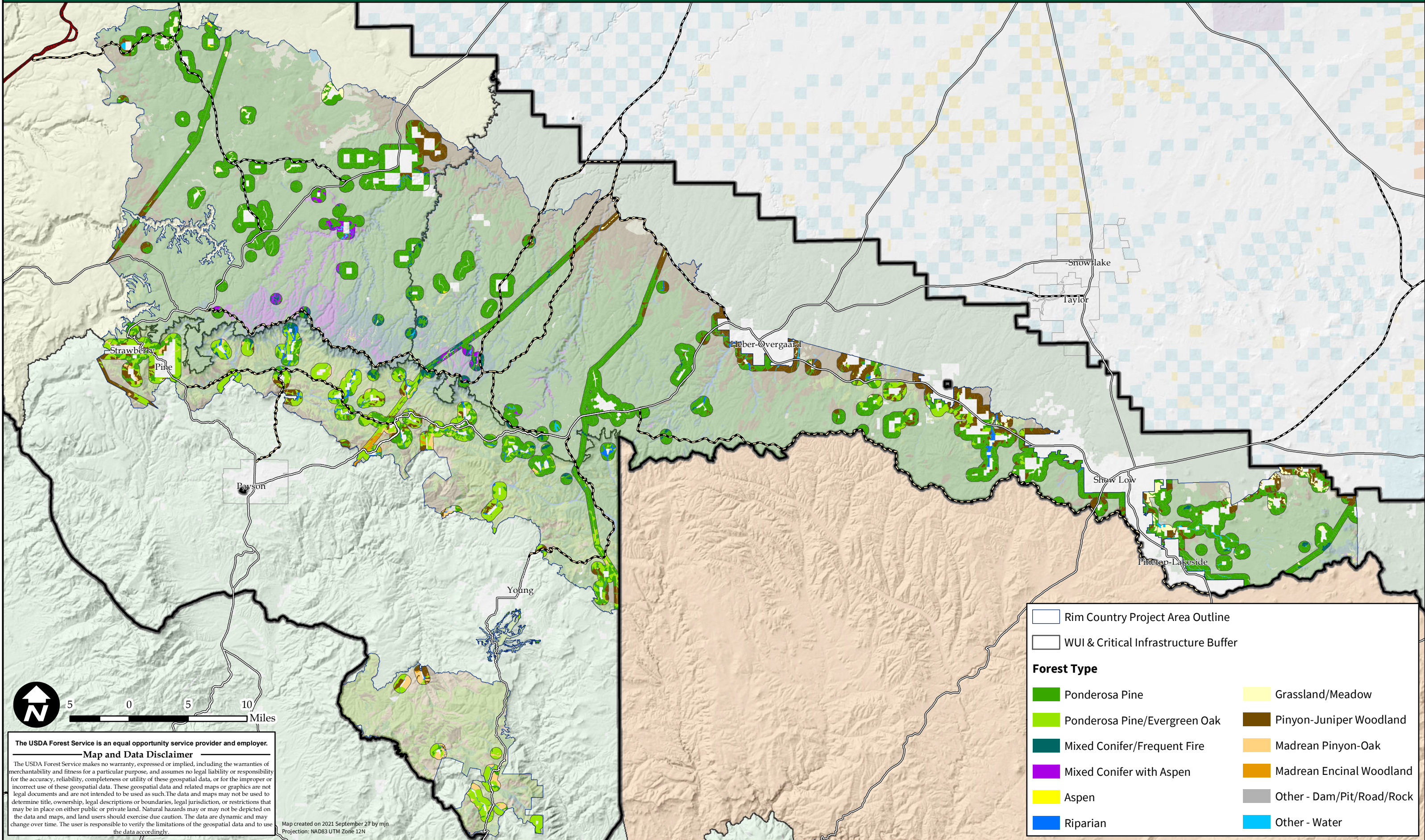
Map created on 2021 September 27 by mjn  
 Projection: NAD83 UTM Zone 12N

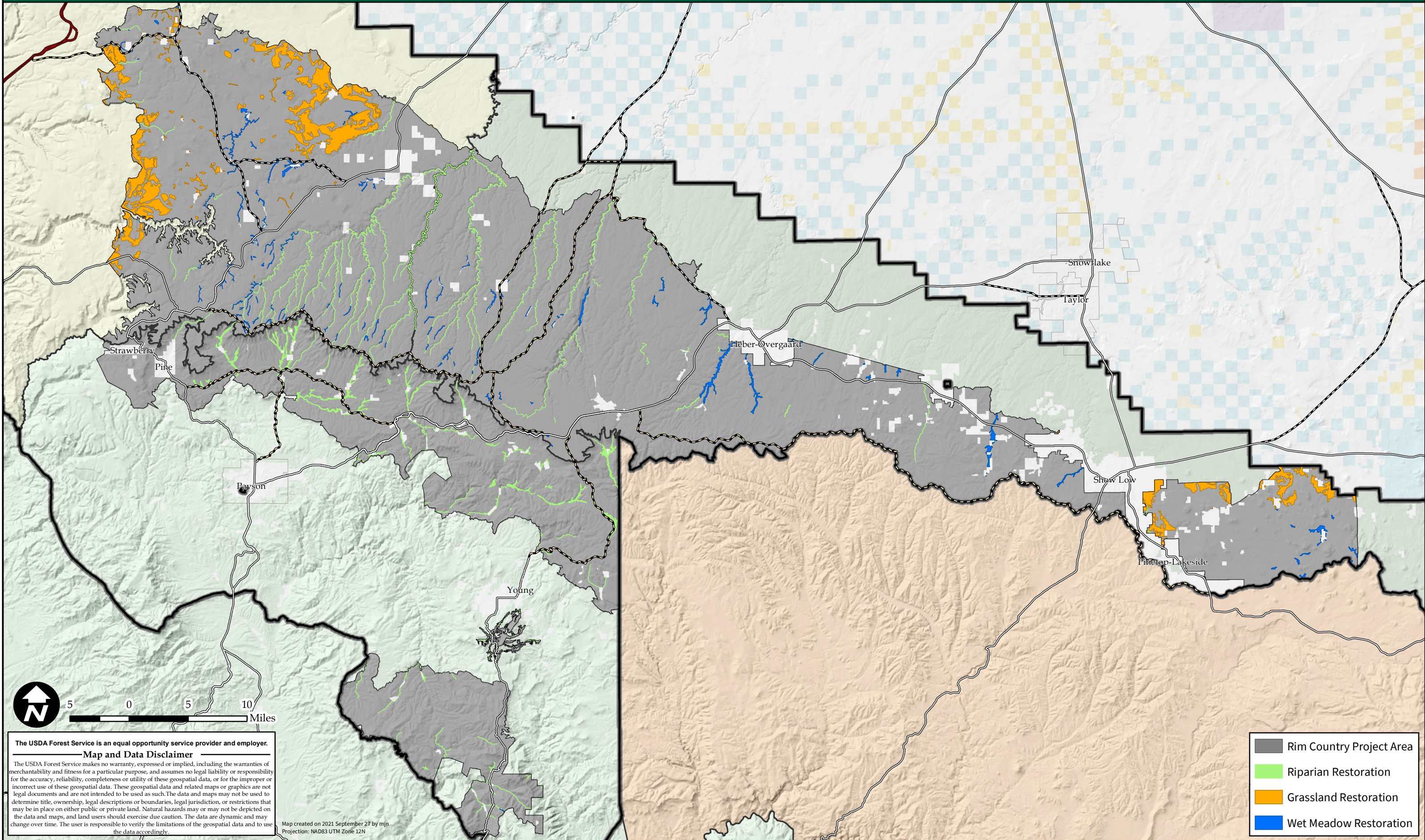


The USDA Forest Service is an equal opportunity service provider and employer.

**Map and Data Disclaimer**

The USDA Forest Service makes no warranty, expressed or implied, including the warranties of merchantability and fitness for a particular purpose, and assumes no legal liability or responsibility for the accuracy, reliability, completeness or utility of these geospatial data, or for the improper or incorrect use of these geospatial data. These geospatial data and related maps or graphics are not legal documents and are not intended to be used as such. The data and maps may not be used to determine title, ownership, legal descriptions or boundaries, legal jurisdiction, or restrictions that may be in place on either public or private land. Natural hazards may or may not be depicted on the data and maps, and land users should exercise due caution. The data are dynamic and may change over time. The user is responsible to verify the limitations of the geospatial data and to use the data accordingly.

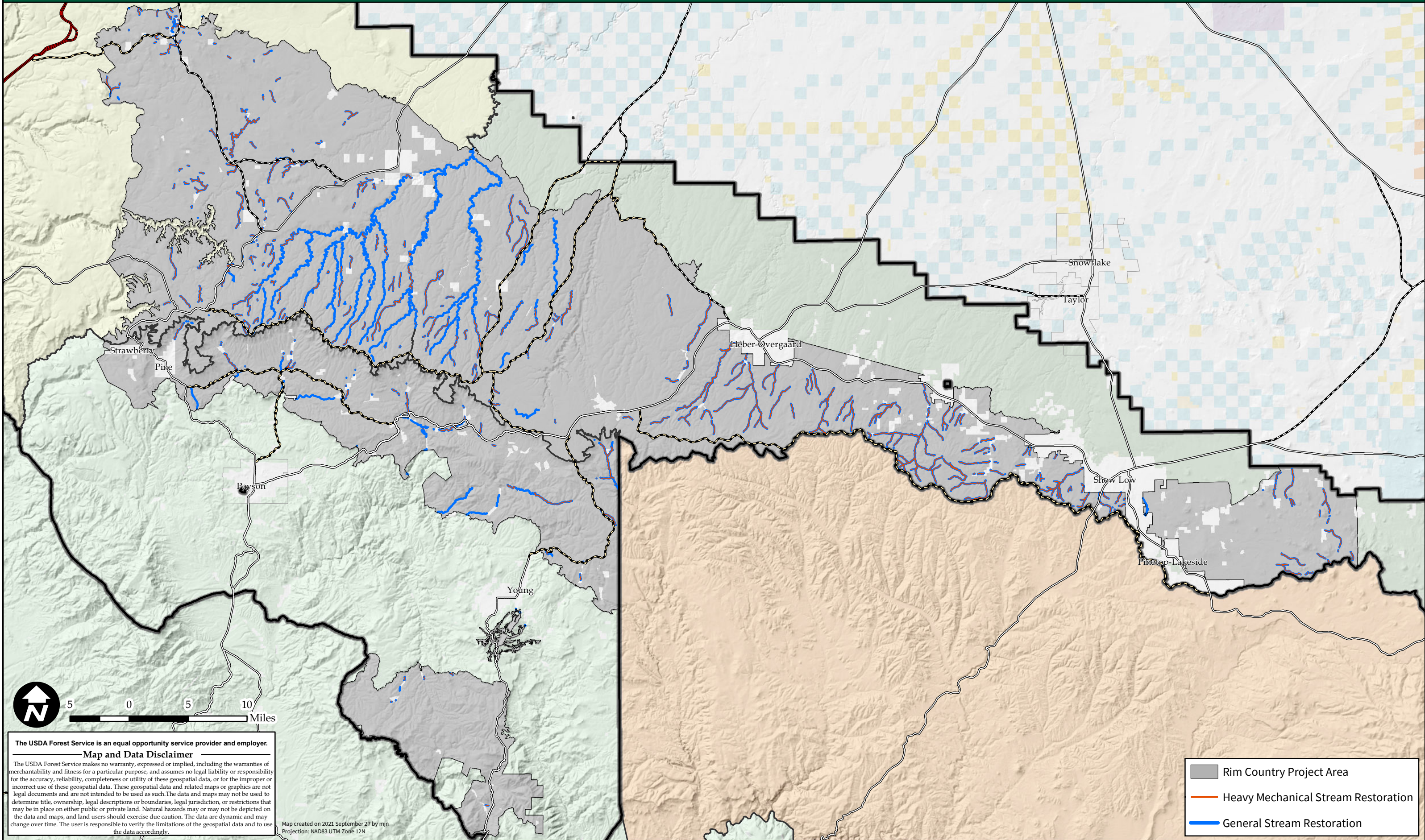




**The USDA Forest Service is an equal opportunity service provider and employer.**  
**Map and Data Disclaimer**  
 The USDA Forest Service makes no warranty, expressed or implied, including the warranties of merchantability and fitness for a particular purpose, and assumes no legal liability or responsibility for the accuracy, reliability, completeness or utility of these geospatial data, or for the improper or incorrect use of these geospatial data. These geospatial data and related maps or graphics are not legal documents and are not intended to be used as such. The data and maps may not be used to determine title, ownership, legal descriptions or boundaries, legal jurisdiction, or restrictions that may be in place on either public or private land. Natural hazards may or may not be depicted on the data and maps, and land users should exercise due caution. The data are dynamic and may change over time. The user is responsible to verify the limitations of the geospatial data and to use the data accordingly.

Map created on 2021 September 27 by mjn  
 Projection: NAD83 UTM Zone 12N

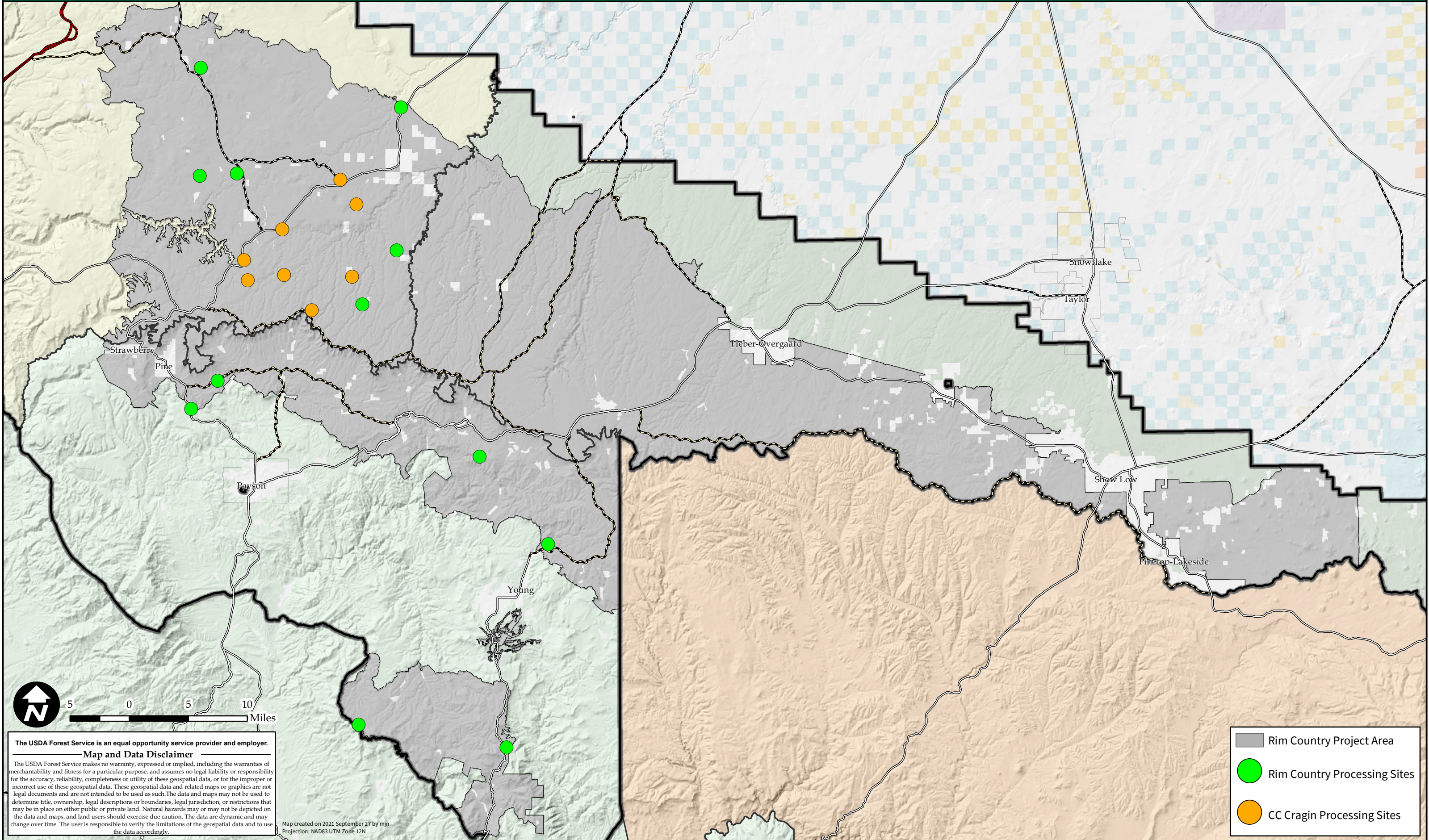
-  Rim Country Project Area
-  Riparian Restoration
-  Grassland Restoration
-  Wet Meadow Restoration



**The USDA Forest Service is an equal opportunity service provider and employer.**  
**Map and Data Disclaimer**  
 The USDA Forest Service makes no warranty, expressed or implied, including the warranties of merchantability and fitness for a particular purpose, and assumes no legal liability or responsibility for the accuracy, reliability, completeness or utility of these geospatial data, or for the improper or incorrect use of these geospatial data. These geospatial data and related maps or graphics are not legal documents and are not intended to be used as such. The data and maps may not be used to determine title, ownership, legal descriptions or boundaries, legal jurisdiction, or restrictions that may be in place on either public or private land. Natural hazards may or may not be depicted on the data and maps, and land users should exercise due caution. The data are dynamic and may change over time. The user is responsible to verify the limitations of the geospatial data and to use the data accordingly.




Map created on 2021 September 27 by mjn  
 Projection: NAD83 UTM Zone 12N

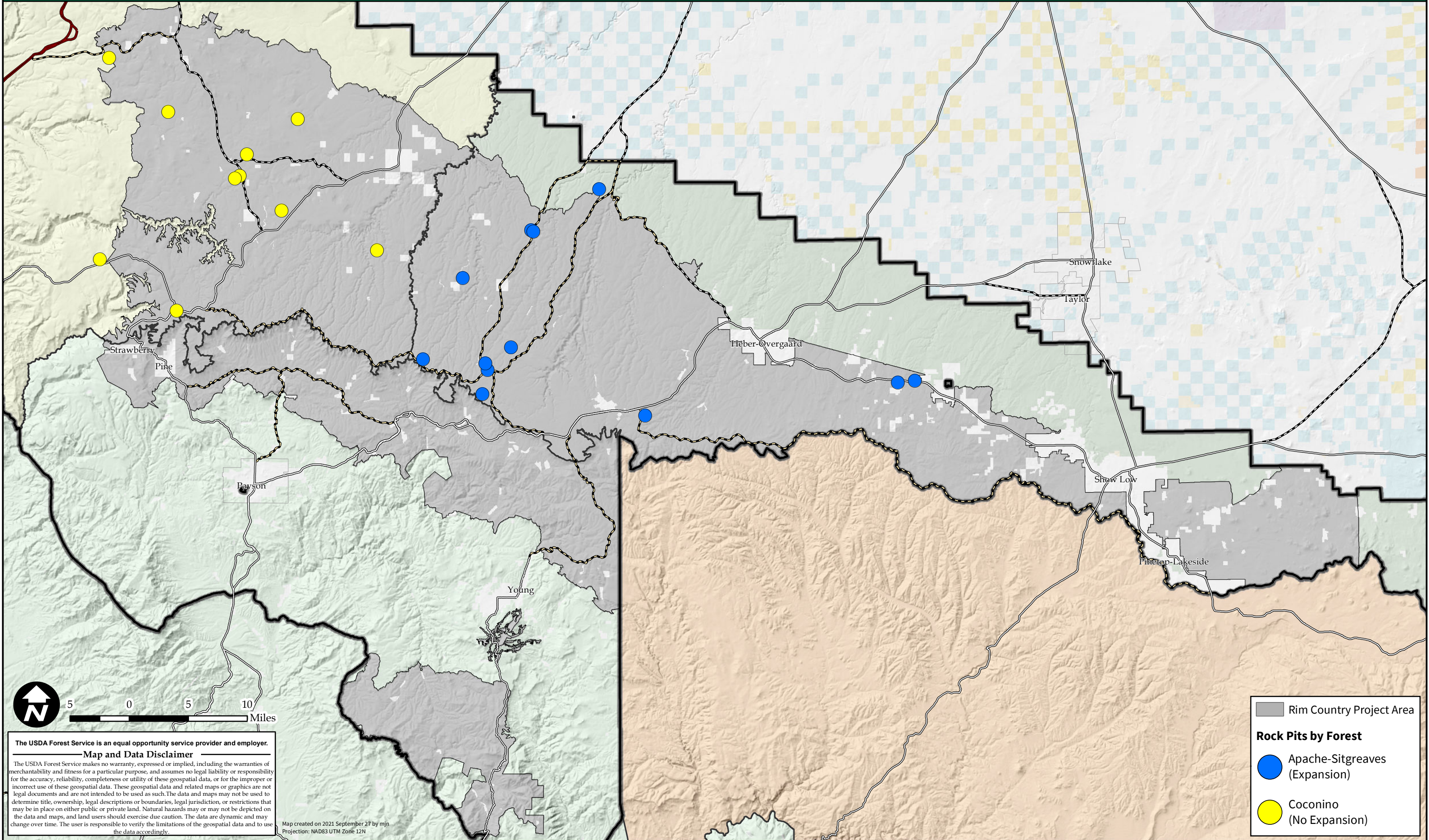
- Rim Country Project Area
- Heavy Mechanical Stream Restoration
- General Stream Restoration



**The USDA Forest Service is an equal opportunity service provider and employer.**  
**Map and Data Disclaimer**  
 The USDA Forest Service makes no warranty, expressed or implied, including the warranties of merchantability and fitness for a particular purpose, and assumes no legal liability or responsibility for the accuracy, reliability, completeness or utility of these geospatial data, or for the improper or incorrect use of these geospatial data. These geospatial data and related maps or graphics are not legal documents and are not intended to be used as such. The data and maps may not be used to determine title, ownership, legal descriptions or boundaries, legal jurisdiction, or restrictions that may be in place on either public or private land. Natural hazards may or may not be depicted on the data and maps, and land users should exercise due caution. The data are dynamic and may change over time. The user is responsible to verify the limitations of the geospatial data and to use the data accordingly.

Map created on 2021 September 27 by mjn  
 Projection: NAD83 UTM Zone 12N

-  Rim Country Project Area
-  Rim Country Processing Sites
-  CC Cragin Processing Sites



Rim Country Project Area  
**Rock Pits by Forest**  
 Apache-Sitgreaves (Expansion)  
 Coconino (No Expansion)

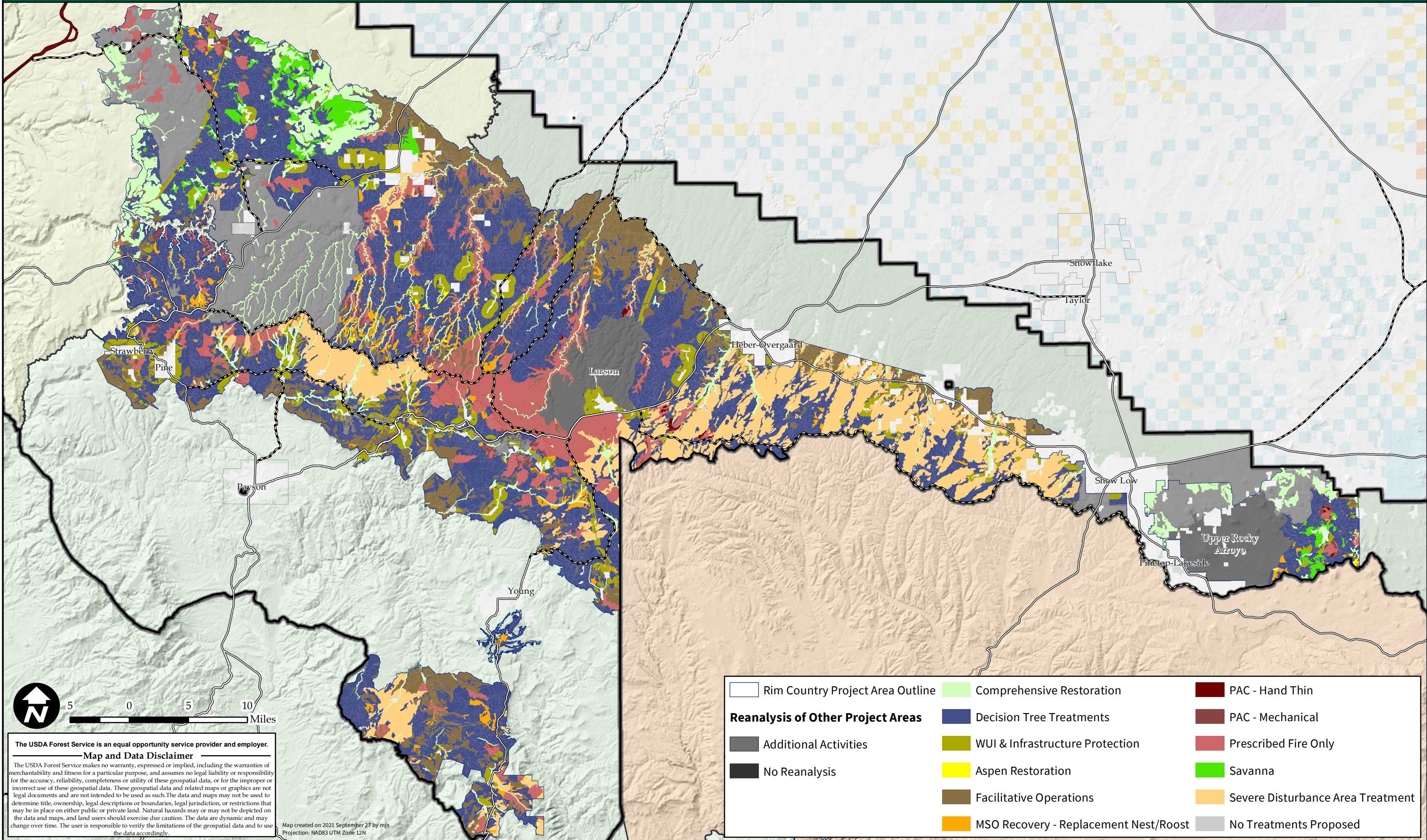


**The USDA Forest Service is an equal opportunity service provider and employer.**

**Map and Data Disclaimer**

The USDA Forest Service makes no warranty, expressed or implied, including the warranties of merchantability and fitness for a particular purpose, and assumes no legal liability or responsibility for the accuracy, reliability, completeness or utility of these geospatial data, or for the improper or incorrect use of these geospatial data. These geospatial data and related maps or graphics are not legal documents and are not intended to be used as such. The data and maps may not be used to determine title, ownership, legal descriptions or boundaries, legal jurisdiction, or restrictions that may be in place on either public or private land. Natural hazards may or may not be depicted on the data and maps, and land users should exercise due caution. The data are dynamic and may change over time. The user is responsible to verify the limitations of the geospatial data and to use the data accordingly.

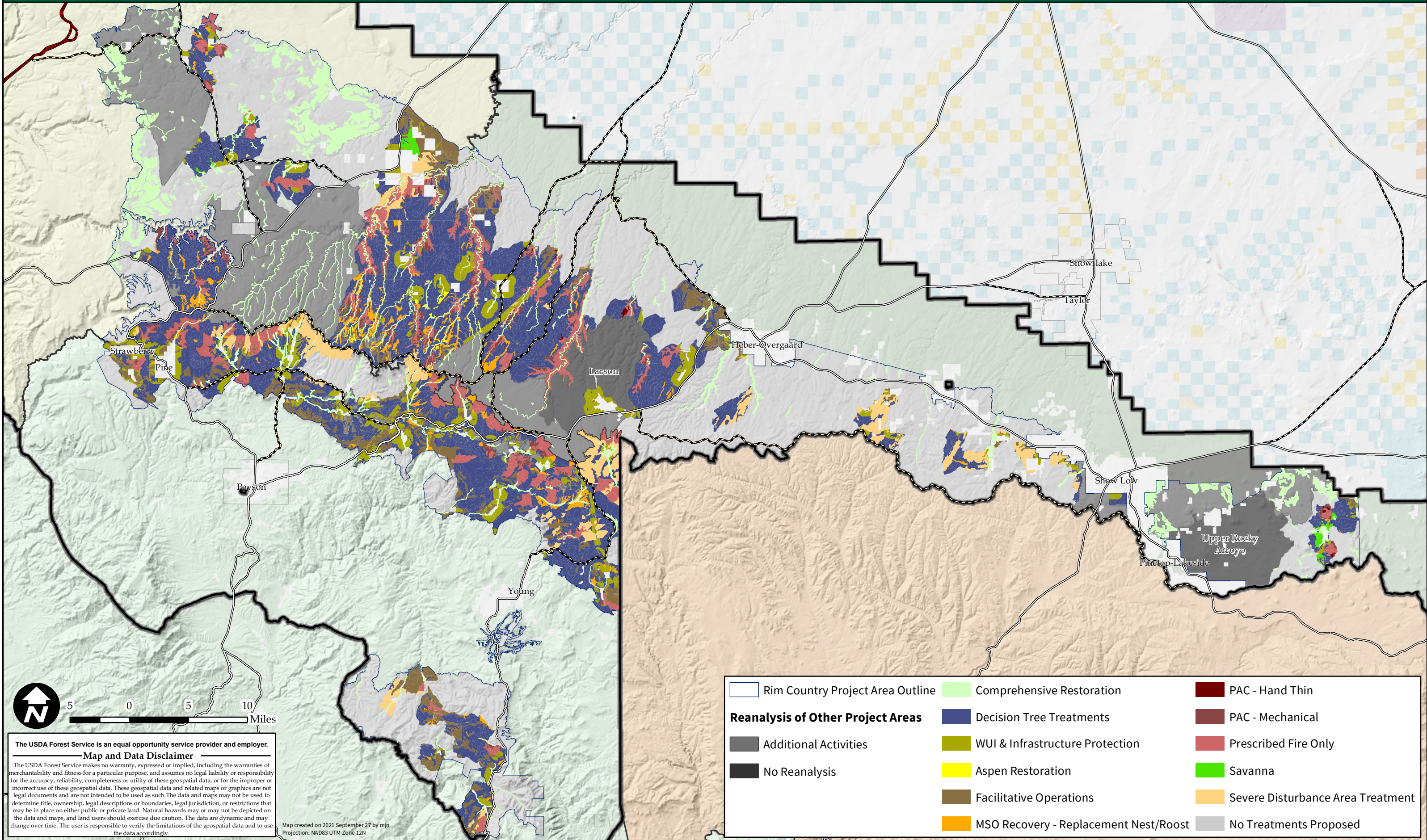
Map created on 2021 September 27 by mjn  
 Projection: NAD83 UTM Zone 12N



**The USDA Forest Service is an equal opportunity service provider and employer.**  
**Map and Data Disclaimer**  
 The USDA Forest Service makes no warranty, expressed or implied, including the warranties of merchantability and fitness for a particular purpose, and assumes no legal liability or responsibility for the accuracy, reliability, completeness or utility of these geospatial data, or for the improper or incorrect use of these geospatial data. These geospatial data and related maps or graphics are not legal documents and are not intended to be used as such. The data and maps may not be used to determine title, ownership, legal descriptions or boundaries, legal jurisdiction, or restrictions that may be in place on either public or private land. Natural hazards may or may not be depicted on the data and maps, and land users should exercise due caution. The data are dynamic and may change over time. The user is responsible to verify the limitations of the geospatial data and to use the data accordingly.

Map created on 2021 September 27 by mjn  
 Projection: NAD83 UTM Zone 12N

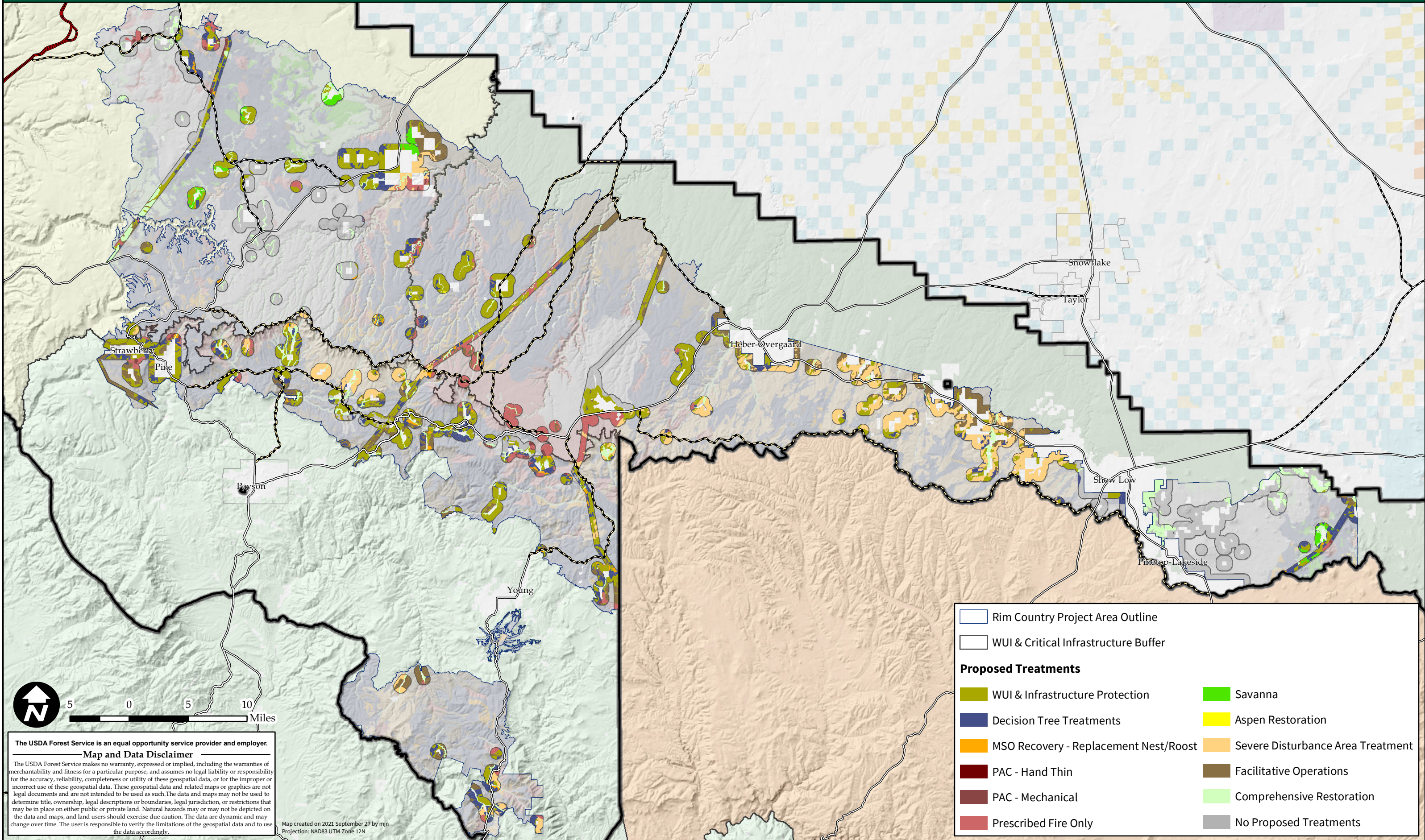
- |  |                                      |                                   |
|--|--------------------------------------|-----------------------------------|
| Rim Country Project Area Outline         | Comprehensive Restoration            | PAC - Hand Thin                   |
| <b>Reanalysis of Other Project Areas</b> | Decision Tree Treatments             | PAC - Mechanical                  |
| Additional Activities                    | WUI & Infrastructure Protection      | Prescribed Fire Only              |
| No Reanalysis                            | Aspen Restoration                    | Savanna                           |
|  | Facilitative Operations              | Severe Disturbance Area Treatment |
|  | MSO Recovery - Replacement Nest/Root | No Treatments Proposed            |



**The USDA Forest Service is an equal opportunity service provider and employer.**  
**Map and Data Disclaimer**  
 The USDA Forest Service makes no warranty, expressed or implied, including the warranties of merchantability and fitness for a particular purpose, and assumes no legal liability or responsibility for the accuracy, reliability, completeness or utility of these geospatial data, or for the improper or incorrect use of these geospatial data. These geospatial data and related maps or graphics are not legal documents and are not intended to be used as such. The data and maps may not be used to determine title, ownership, legal descriptions or boundaries, legal jurisdiction, or restrictions that may be in place on either public or private land. Natural hazards may or may not be depicted on the data and maps, and land users should exercise due caution. The data are dynamic and may change over time. The user is responsible to verify the limitations of the geospatial data and to use the data accordingly.












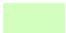


Map created on 2021 September 27 by mjn  
 Projection: NAD83 UTM Zone 12N

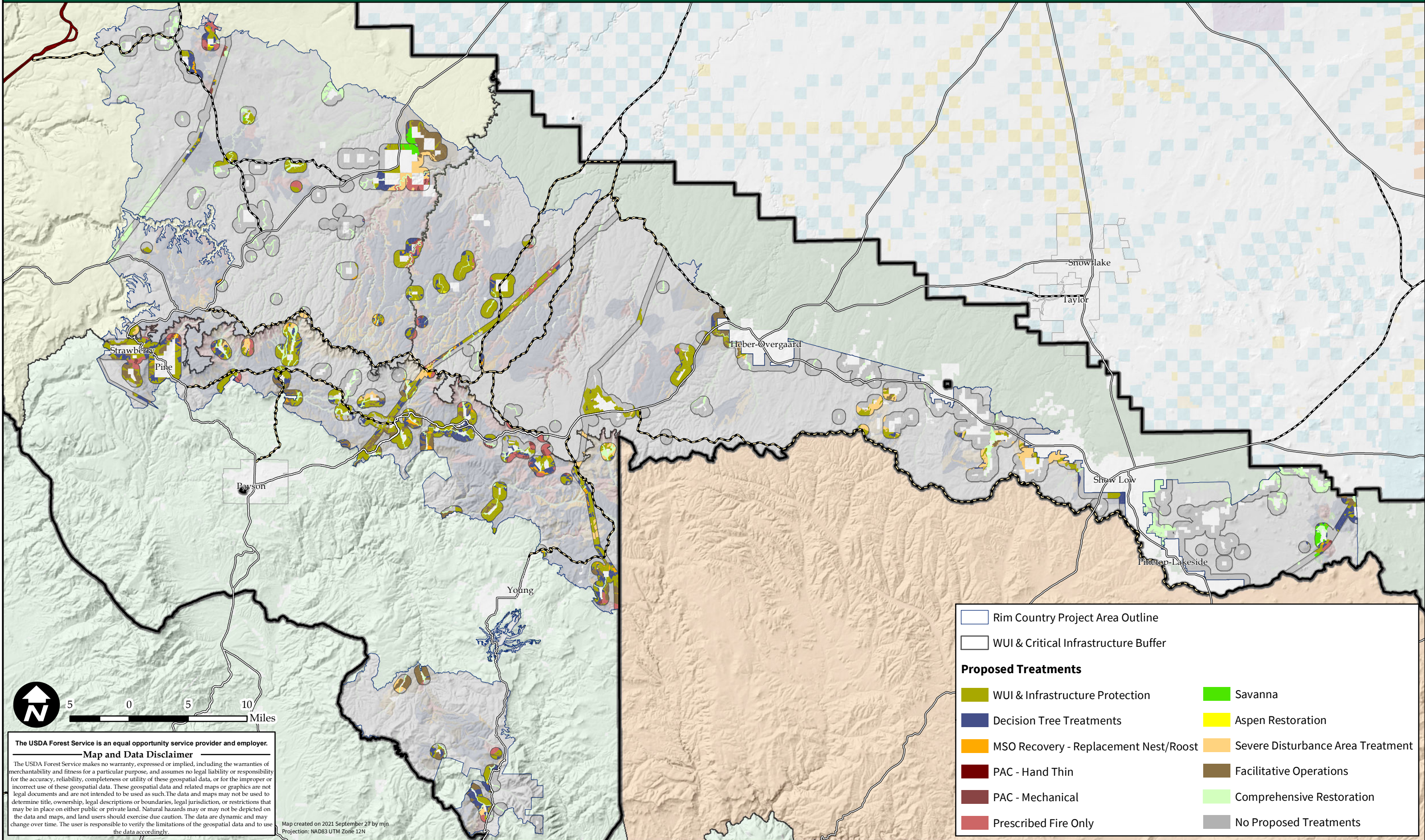
Rim Country Project Area Outline	Comprehensive Restoration	PAC - Hand Thin
<b>Reanalysis of Other Project Areas</b>	Decision Tree Treatments	PAC - Mechanical
Additional Activities	WUI & Infrastructure Protection	Prescribed Fire Only
No Reanalysis	Aspen Restoration	Savanna
	Facilitative Operations	Severe Disturbance Area Treatment
	MSO Recovery - Replacement Nest/Roost	No Treatments Proposed



**The USDA Forest Service is an equal opportunity service provider and employer.**  
**Map and Data Disclaimer**  
 The USDA Forest Service makes no warranty, expressed or implied, including the warranties of merchantability and fitness for a particular purpose, and assumes no legal liability or responsibility for the accuracy, reliability, completeness or utility of these geospatial data, or for the improper or incorrect use of these geospatial data. These geospatial data and related maps or graphics are not legal documents and are not intended to be used as such. The data and maps may not be used to determine title, ownership, legal descriptions or boundaries, legal jurisdiction, or restrictions that may be in place on either public or private land. Natural hazards may or may not be depicted on the data and maps, and land users should exercise due caution. The data are dynamic and may change over time. The user is responsible to verify the limitations of the geospatial data and to use the data accordingly.

Map created on 2021 September 27 by mjn  
 Projection: NAD83 UTM Zone 12N

 Rim Country Project Area Outline	
 WUI & Critical Infrastructure Buffer	
<b>Proposed Treatments</b>	
 WUI & Infrastructure Protection	 Savanna
 Decision Tree Treatments	 Aspen Restoration
 MSO Recovery - Replacement Nest/Roost	 Severe Disturbance Area Treatment
 PAC - Hand Thin	 Facilitative Operations
 PAC - Mechanical	 Comprehensive Restoration
 Prescribed Fire Only	 No Proposed Treatments



**The USDA Forest Service is an equal opportunity service provider and employer.**  
**Map and Data Disclaimer**  
 The USDA Forest Service makes no warranty, expressed or implied, including the warranties of merchantability and fitness for a particular purpose, and assumes no legal liability or responsibility for the accuracy, reliability, completeness or utility of these geospatial data, or for the improper or incorrect use of these geospatial data. These geospatial data and related maps or graphics are not legal documents and are not intended to be used as such. The data and maps may not be used to determine title, ownership, legal descriptions or boundaries, legal jurisdiction, or restrictions that may be in place on either public or private land. Natural hazards may or may not be depicted on the data and maps, and land users should exercise due caution. The data are dynamic and may change over time. The user is responsible to verify the limitations of the geospatial data and to use the data accordingly.

Map created on 2021 September 27 by mjn  
 Projection: NAD83 UTM Zone 12N

