

CHUGACH National Forest

PILE BURNING FACTSHEET



Why burn the piles rather than leave them, chip them or haul them away?

vs



= \$

Burning is the most cost-efficient way of removing slash. Covering the ground can damage vegetation and prevent regeneration.

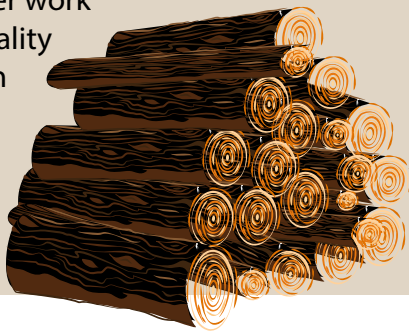
Why does the Forest build piles?

Hazardous fuels treatments leave behind slash piles. Limbs and smaller diameter material are unusable or too costly to remove.



Why are there so many?

The Forest Service and State wait for safe burning conditions and then together work to balance air quality and public health considerations with wildland fire risk reduction.



When will the Forest Service burn piles?

Slash piles are burned under specific conditions, including ample precipitation and a favorable weather forecast. These conditions typically occur in the fall or early winter and continue until spring.

How can I learn about pile burning plans?

For any questions concerning pile burning, please contact Forest Service Fire Prevention Technician, Mitchell Linebarger at 907-952-8627

