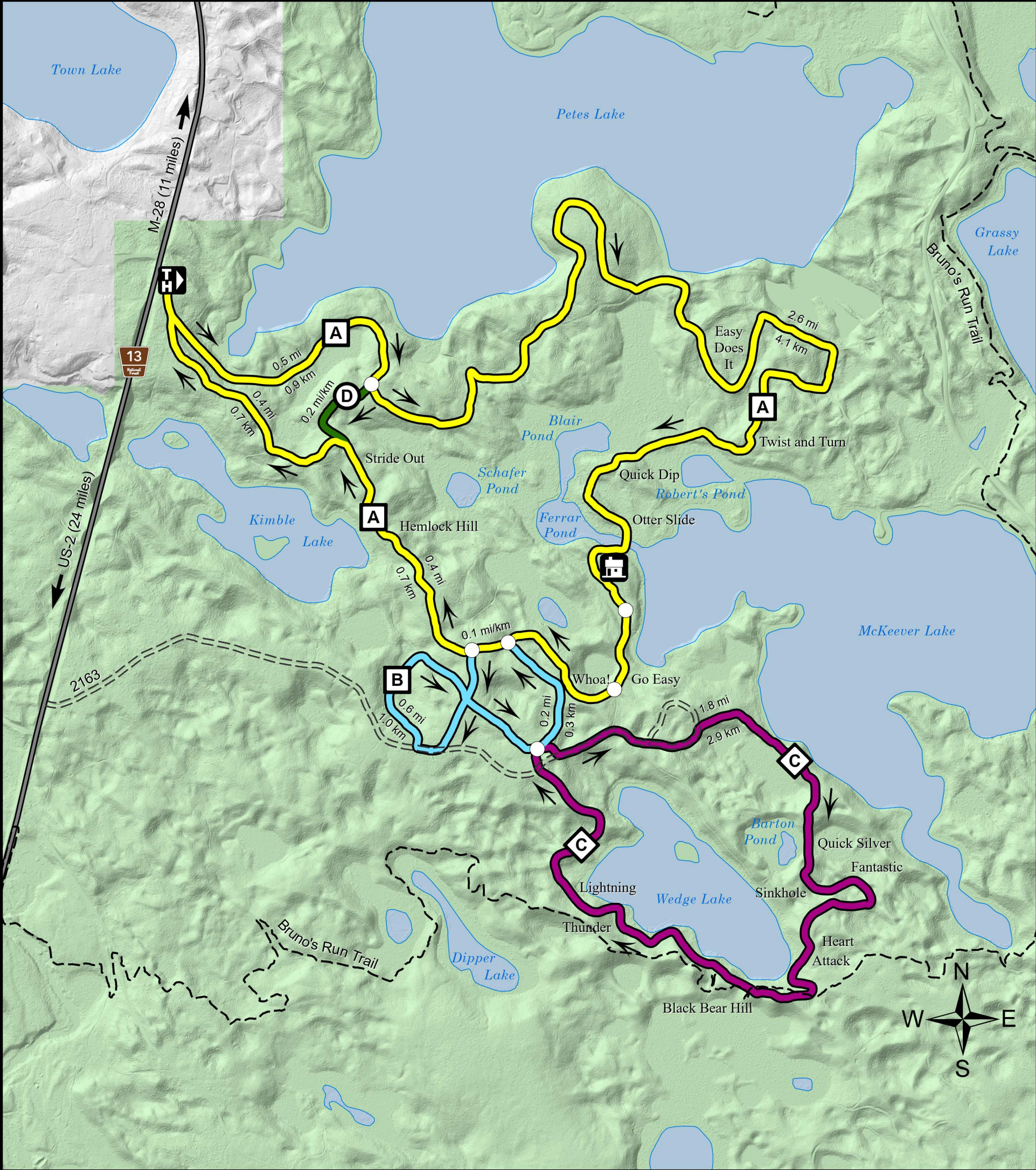




# Hiawatha National Forest

## McKeever Hills Cross Country Ski Trails



- A Loop 4.0 miles (6.4 km)
- B Loop via A 4.9 miles (7.8 km)
- C Loop via A & B 6.7 miles (10.7 km)
- D Loop (A Shortcut) 1.1 miles (1.8 km)

### Difficulty Level

- Easy
- Moderate
- Most Difficult

- Cabin
- Trailhead/Parking
- Trail Map Location
- Bruno's Run Bike Trail
- Forest Highway
- Seasonally Restricted Road (Winter Closure)
- Hiawatha National Forest Land

All trails are open to classic skiing only.  
Please follow trail direction indicated on the map.  
Warning: C Loop is considered advanced with steep hills.  
Please use caution, and do not attempt this trail alone.

For more information, contact  
Munising District Office  
at (906) 387-2512.

