

SPECIES: Scientific [common]	<i>Myotis lucifugus</i> [Little Brown Myotis]
Forest:	Bridger-Teton National Forest
Forest Reviewer:	Randall Griebel, James Wilder
Date of Review:	09/21/2018, updated 4/17/2025
Forest concurrence (or recommendation if new) for inclusion of species on list of potential SCC: (Enter Yes or No)	NO

FOREST REVIEW RESULTS:

1. The Forest concurs or recommends the species for inclusion on the list of potential SCC:
Yes ___ No X ___
2. Rationale for not concurring is based on (check all that apply):
 Species is not native to the plan area ___
 Species is not known to occur in the plan area ___
 Species persistence in the plan area is not of substantial concern X ___

FOREST REVIEW INFORMATION:

1. Is the Species Native to the Plan Area? Yes X ___ No ___
 If no, provide explanation and stop assessment.
2. Is the Species Known to Occur within the Planning Area? Yes X ___ No ___
 If no, stop assessment.

Table 1. All Known Occurrences, Years, and Frequency within the Planning Area

Year Observed	Number of Individuals	Location of Observations	Source of Information
2009	18	Blackrock District	Garber, C.S. 1991. A survey for Townsend’s big-eared bat (<i>Plecotus townsendii</i>) and the spotted bat (<i>Euderma maculate</i>) on the Bridger-Teton and Targhee National Forests in Wyoming. Wyoming Natural Diversity Database, Laramie, WY.
2009-2013	19	Big Piney District	
2007-2008	40	Kemmerer District	
1991 2009	52 18	Jackson Ranger District	Wyoming Natural Diversity Database (September 2018)
1991 2009	15 24	Pinedale Ranger District	
1991 2008-2012	22 44	Greys River District	

- a. Are all Species Occurrences Only Accidental or Transient?

Yes___ No_X___

If yes, document source for determination and stop assessment.

- b. For species with known occurrences on the Forest since 1990, based on the number of observations and/or year of last observation, can the species be presumed to be established or becoming established in the plan area?

Yes_X_ No___

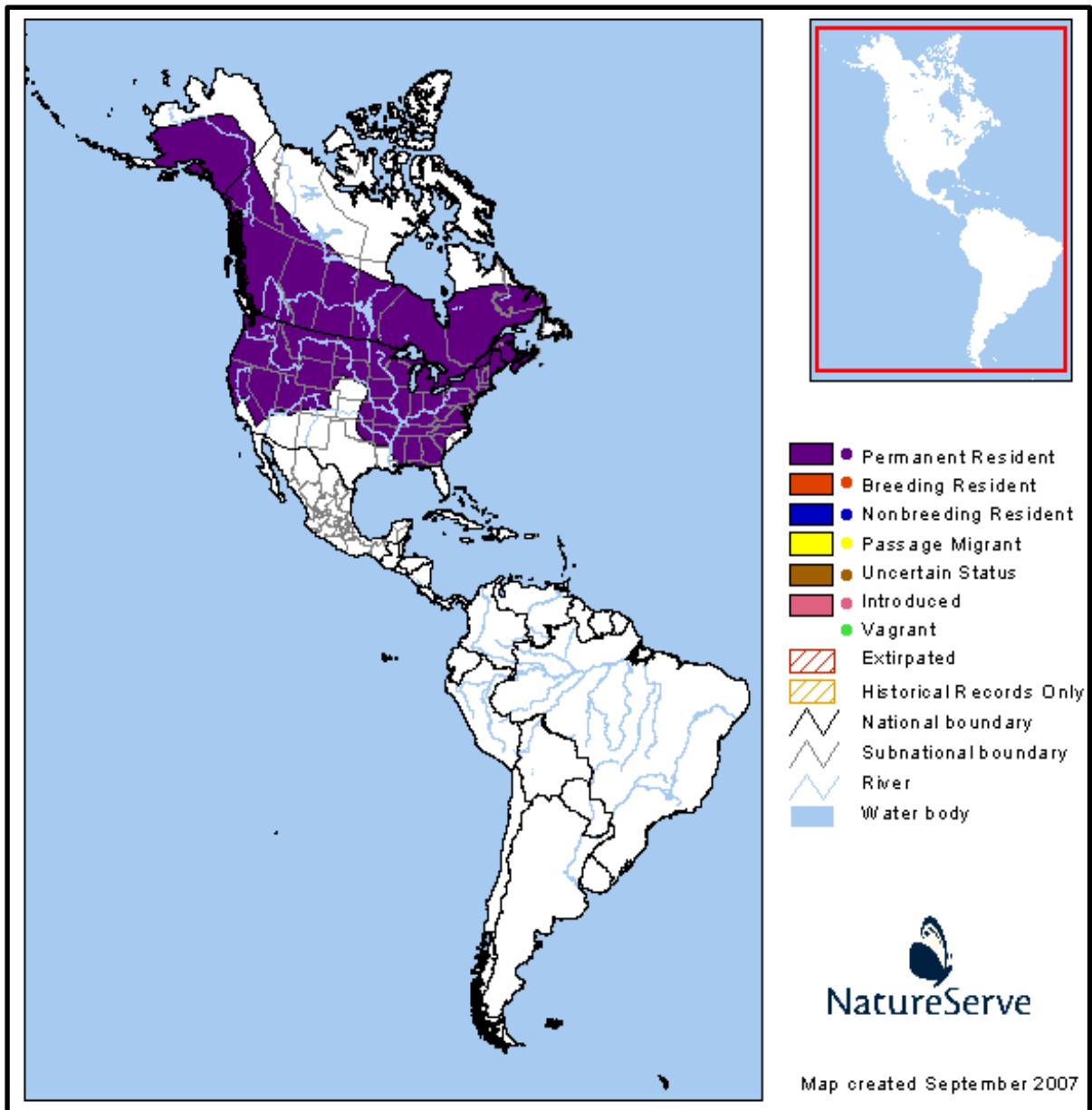
If no, document source for determination and stop assessment.

- c. For species with known occurrences on the Forest predating 1990, does the weight of evidence suggest the species still occurs in the plan area?

Yes_X_ No___

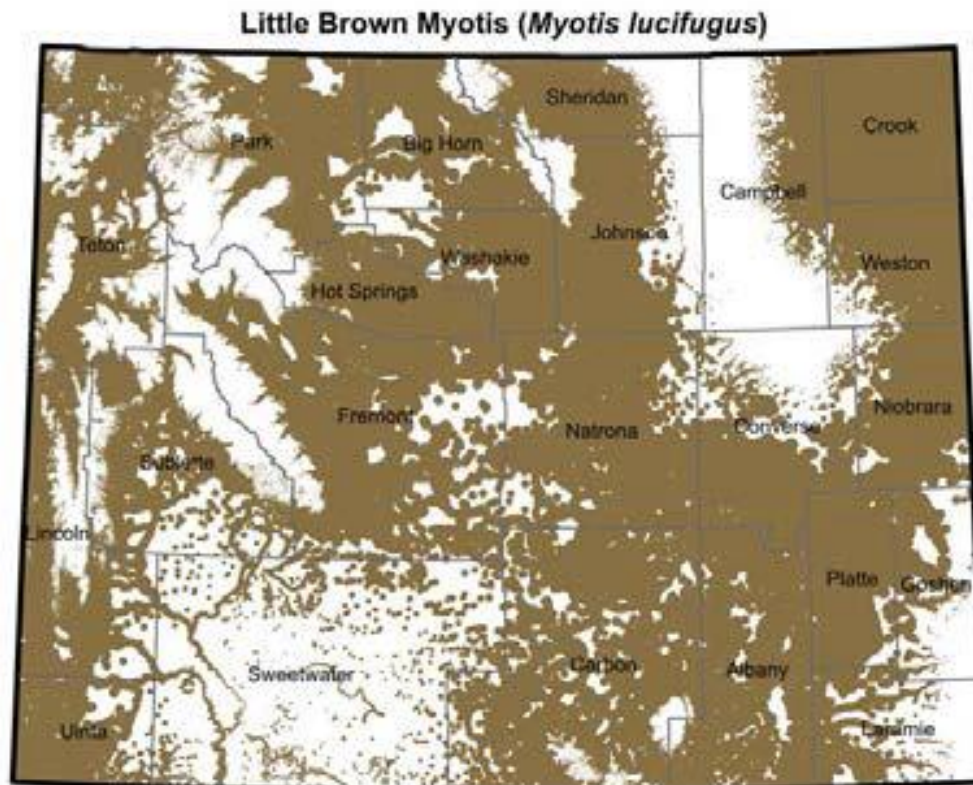
If no, document source for determination and stop assessment.

d. **Map 1**, Little Brown Myotis range map.



Map from: Patterson, B.D., G. Ceballos, W. Sechrest, M.F. Tognelli, T. Brooks, L. Luna, P. Ortega, I. Salazar, and B.E. Young. 2003. Digital Distribution Maps of the Mammals of the Western Hemisphere, version 1.0. NatureServe, Arlington, Virginia, USA.

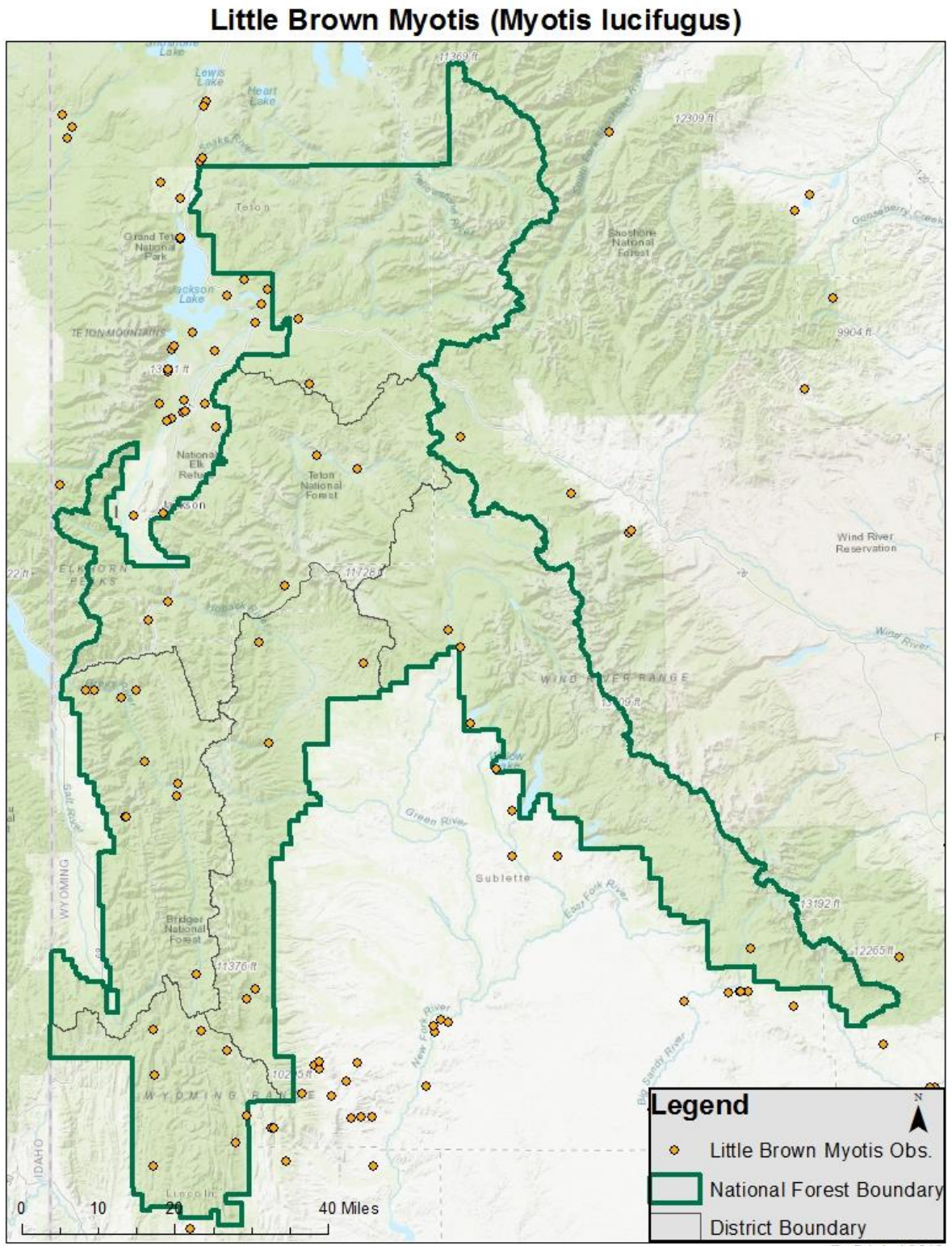
e. **Map 2**, Range and predicted distribution of the Little Brown Myotis in Wyoming.



SOURCE: Digital maps of ranges for Wyoming Species of Greatest Conservation Need: Sept. 2016. Wyoming Game and Fish Department and Wyoming Natural Diversity Database, University of Wyoming, Laramie, Wyoming.
Note that brown indicates the predicted distribution of the species;
heavy black lines indicate outermost boundaries of possible occurrence.

Wyoming Game and Fish Department. 2017. State Wildlife Action Plan. Yuma Myotis (*Myotis lucifugus*).

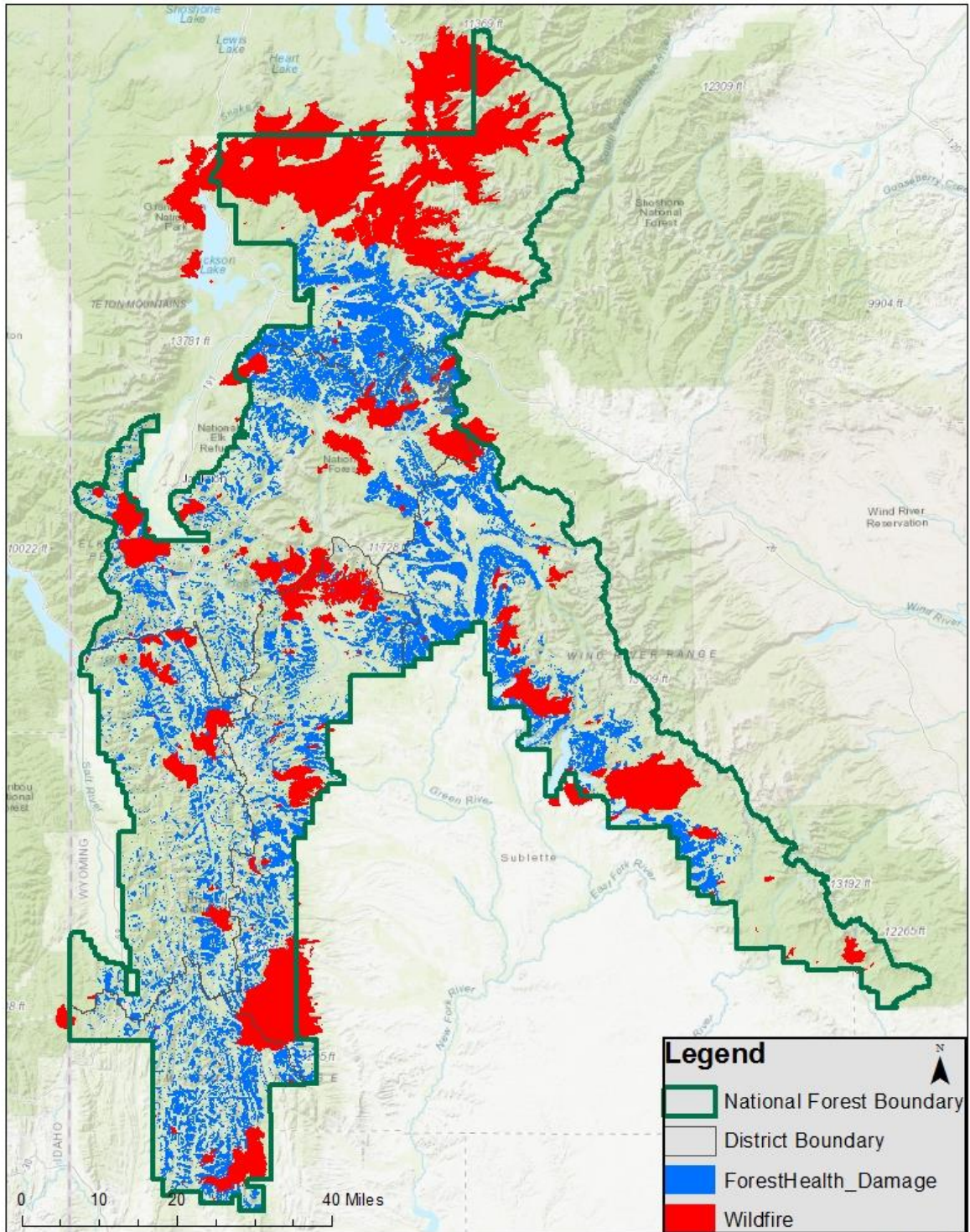
- f. **Map 3**, Map of Little Brown Myotis occurrences on the Bridger-Teton National Forest (Wyoming Natural Diversity Database [September 2018]).



- g. **Map 4**, Areas on the forest with snag habitat. Includes all historical to present wildfires and forested areas damaged by insects, disease, abiotic factors, multiple factors and unknown reasons. It is important to note that in most cases of damage there are also live, green trees

intermixed within the polygons. Additionally, most wildfire polygons have areas of live trees that did not burn intermixed within the polygons.

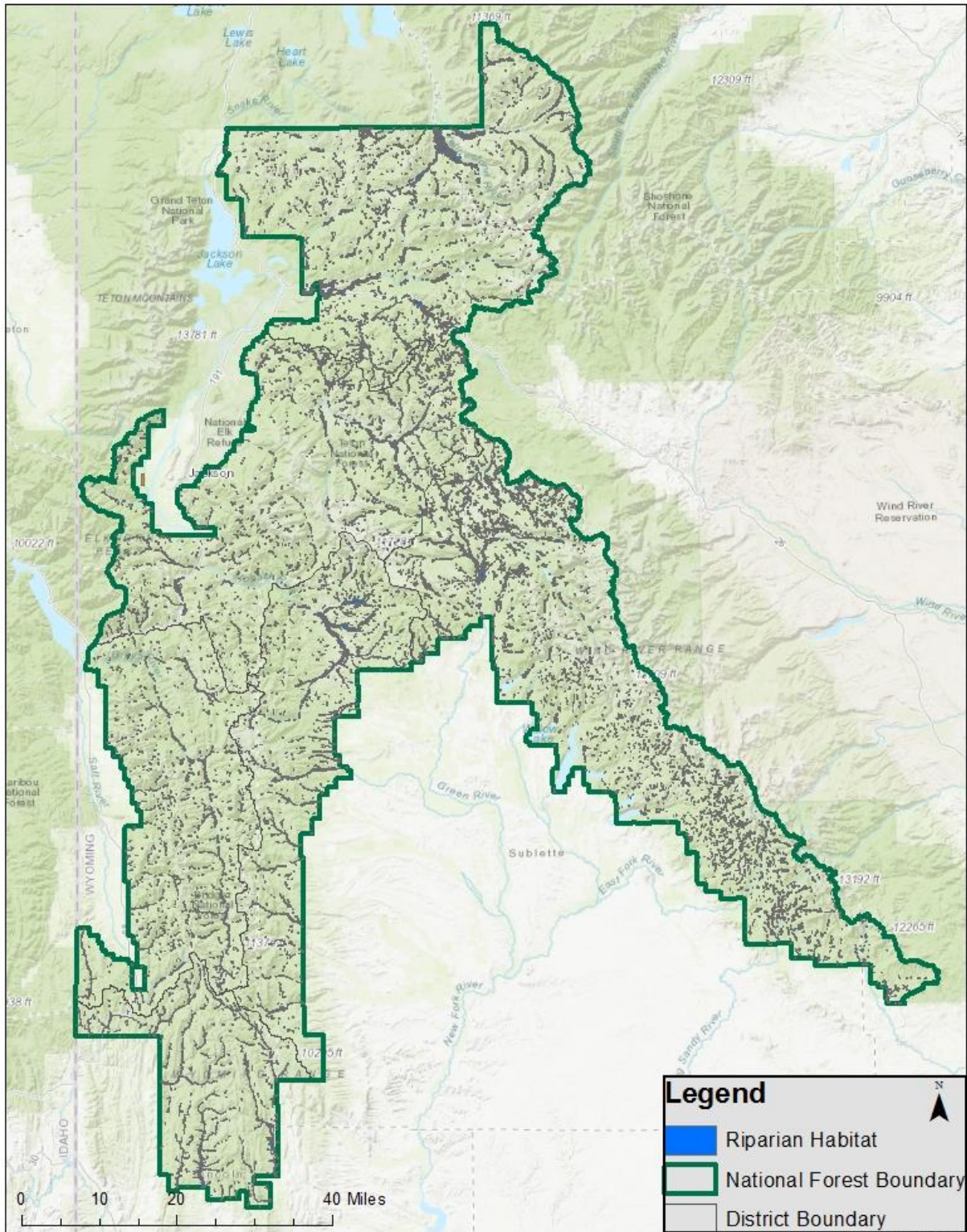
Snag Habitat



R. Griebel 2018

h. **Map 5**, Riparian habitat on the BTNF; cottonwood, willow and riparian herbland communities.

BTNF Riparian Habitat



R. Griebel 2018

3. Is There Substantial Concern for the Species' Capability to persist Over the Long-term in the Plan Area Based on Best Available Scientific Information?

Table 2. Status summary based on existing conservation assessments.

Entity	Status/Rank (include definition if Other)
<p>NatureServe Global Status</p>	<p>G3 — Vulnerable</p> <p><i>Widespread in North America from Alaska-Canada boreal forest south through most of the contiguous United States to central Mexico; formerly very abundant, now subject to a severe decline in abundance in eastern North America as a result of high mortality caused by an introduced, rapidly spreading fungal disease (white-nose syndrome); subject to significant, presumably increasing mortality by turbines at wind energy facilities; still common in much of the historical range apart from northeastern North America, but at least some of these populations may be subject to declines in the foreseeable future. Conservation status of this species should be reviewed frequently as new information on the impact of white-nose syndrome and wind energy becomes available.</i></p>
<p>NatureServe State Status</p>	<p>S5 — Secure</p> <p><i>At very low or no risk of extirpation in the jurisdiction due to a very extensive range, abundant populations or occurrences, with little to no concern from declines or threats.</i></p>
<p>WGFD</p>	<p>NSS3 (Bb), Tier II</p> <p><i><u>Population Status:</u> Vulnerable - Population size or distribution is restricted or declining but extirpation is not imminent</i></p> <p><i><u>Limiting Factors:</u> Severe - Limiting factors are severe and are not increasing significantly</i></p> <p><i><u>Tier II:</u> Moderate priority</i></p> <p><i>[The WGFD's Species of Greater Conservation Need (SGCN) designation process is based upon its Native Species Status (NSS) classification system that compares population and limiting factor variables using a 16 cell matrix. As a species moves from a placement closest to the upper left corner of the matrix (Aa/NSS1) toward the lower right corner (Dd/NSS7) the species' population status in Wyoming is considered more secure. Numerical scores were assigned to each of these variables and summed to provide a total score (i.e. NSS3). SGCN were placed into one of three tiers based on their total score: Tier I – highest priority, Tier II – moderate priority, and Tier III – lowest priority.]</i></p>

	(WGFD - Wyoming Species of Greatest Conservation Need)
WYNDD	<p>Species of Potential Concern</p> <p><i>Species that appear to be secure at present, but because they have limited distribution as regional or state endemics they could become vulnerable under large-scale changes. Species with this status warrant periodic checks. (Wyoming Natural Diversity Database - Species of Potential Concern)</i></p>
USDA Forest Service	No Special Status
USDI FWS	Listed as Under Review by FWS (ECOS site accessed June 2022). Included in the USFWS FY23-27 National Domestic Listing Workplan (April 14, 2023 version) (USFWS 2023).
WY BLM	No Special Status
IUCN	<p>LC – Least Concern</p> <p><i>A taxon is Least Concern when it has been evaluated against the criteria and does not qualify for Critically Endangered, Endangered, Vulnerable or Near Threatened. Widespread and abundant taxa are included in this category.</i></p> <p>(IUCN – Red List Categories and Criteria)</p>

4. Is There Substantial Concern for the Species' Capability to persist Over the Long-term in the Plan Area Based on Best Available Scientific Information?

Table 2. Status summary based on best available scientific information.

Species (Scientific and Common Name) <i>Myotis lucifugus</i> [Little Brown Myotis]	
Criteria	Rationale
Distribution on Bridger-Teton National Forest	The Little Brown Myotis is widely distributed across the United States and Canada (Map 1). Wyoming is located in the center of its distribution and makes-up a relatively small proportion of the species global range. However, White-nose Syndrome (WNS) has greatly reduced numbers in the northeastern United States (Frick et al. 2010 <i>in</i> WGFD 2017). The Little Brown Myotis is well distributed throughout the forest (Table 1 and Map 3) and was the most common species identified during bat surveys in 1991 across much of the Bridger-Teton National Forest (BTNF) and portions of the Caribou-Targhee National Forest (CTNF) in Wyoming (Garber 1991).
Abundance on the Bridger-Teton National Forest	There are no estimates of abundance for the Little Brown Myotis range-wide or in Wyoming. However, it is frequently reported as one of the most common bat species across its range (Kunz and Reichard 2010 <i>in</i> WGFD 2017). In Wyoming, the Little Brown Myotis was the most frequently documented bat species in several studies across the state (WGFD 2017), including the BTNF (Garber 1991).
Population Trend on the Bridger-Teton National Forest	<p>The range-wide, long-term population trend is unknown; however, construction of buildings and other human-made structures has likely increased the availability of breeding habitat across North America, and mines have increased the availability of suitable hibernacula. There has also been a significant impact to the population from WNS in eastern North America. Despite recent declines, the net change over the long-term may have been an increase (NatureServe 2018). Population trends for the Little Brown Myotis in Wyoming are unknown although their numbers were thought be stable or slightly increasing range-wide up to 2006. Regional extirpations are projected by 2026 in the northeastern United States (Frick et al. 2010 <i>in</i> WGFD 2017). There are no population trend estimates for the BTNF.</p> <p>WNS could impact the species in Wyoming; a Little Brown Myotis was discovered in May 2018, at Fort Laramie National Historic Site in Goshen County with the fungus that causes WNS, the first such finding in the state. Testing of skin-swab samples confirmed the presence of the fungus <i>Pseudogymnoascus destructans</i> (<i>Pd</i> for short). The discovery does not mean the bat had WNS,</p>

Species (Scientific and Common Name) <i>Myotis lucifugus</i> [Little Brown Myotis]	
Criteria	Rationale
	<p>but the fungus detection in Wyoming signals the continued spread west of a pathogen that has killed millions of bats in the eastern and midwestern U.S. (USFWS 2018). Pd was confirmed in Lincoln County in 2021-2022, and in Teton County in 2023-2024 (https://www.whitenosesyndrome.org/, accessed 4/17/2025).</p>
Habitat Trend on the Bridger-Teton National Forest	<p>The Little Brown Myotis is considered a “generalist species” since it has been documented in many different habitat types. In Wyoming, the species has been documented in coniferous forests, riparian areas, woodlots, shelterbelts, and urban areas (WGFD 2017). There are three roost types the species requires: day roosts, night roosts, and hibernacula; use varies according to season. In spring and summer, reproductive females form maternity colonies at roost sites with warm microclimates. Day roosts are varied and include buildings, trees, rock piles, wood piles, and caves. Non-reproductive bats roost singly or in small groups at sites with cooler microclimates. In Wyoming, caves, abandoned mines, buildings, rock shelters, and railroad tunnels have been identified as night roost sites (Hester and Grenier 2005). At night, large numbers of Little Brown Myotis pack tightly into a confined space following an initial feeding bout that begins at dusk. In late summer and fall, individuals migrate up to several hundred km’s to winter hibernacula, consisting primarily of caves or abandoned mines with high humidity and temperatures just above freezing (Fenton and Barclay <i>in</i> WGFD 2017).</p> <p><u>Caves:</u></p> <p>There are few large caves on the Forest and those that do exist are generally thought to be too high in elevation and subsequently too cold to support cave-dwelling bats. Many of the known caves are on north-facing slopes and not free of snow until mid-July; thus, there is probably not enough forage in these areas to support bats (Garber 1991). As part of the 1991 surveys, Garber contacted a number of individuals that have investigated many of the caves on the forest to get a better understating of bat use in these locations. Of all the people contacted, Garber estimated that about 30 caves were checked in the study area with the number approaching 100 if “shelters” were included and no large colonies of bats were recorded. Only two people reported seeing any bats in any caves and those were nearly all a single observation of just one bat (Garber 1991). It is likely that the caves on the BTNF do not provide the desired micro-climate to serve as hibernacula for the species. All known hibernacula sites in Wyoming are located east of the Forest (Hester and Grenier 2005).</p>

Species (Scientific and Common Name) ***Myotis lucifugus* [Little Brown Myotis]**

Criteria	Rationale
----------	-----------

	<p><u><i>Forested Habitat:</i></u></p> <p>The major types of tree roosts include cavities in snags or live trees; crevices behind exfoliating bark, within very rough bark, and in wood; and foliage. Cavity roosts generally provide a relatively stable microclimate and offer protection from predators. Bark roosts provide a more abundant but much less permanent, less secure, and less thermally-stable roosting environment than cavities, and bats that roost in bark often must change roosts more frequently, often daily or weekly (Hester and Grenier 2005).</p> <p>Roosting has been documented in rock crevices and snags in forests after experiencing mixed severity and stand replacing wildland fires (Schwab 2006). However, maternal roosts were not reported. Habitat conditions have likely improved for the Little Brown Myotis across the BTNF; the combination of mixed-severity wildfires and “beetle-kill” have resulted in opening-up the canopy and creating snags while maintaining some live tree cover (Map 4).</p> <p>Approximately 71% (2.77 million acres) of the BTNF is characterized as a “forested” biophysical setting (BpS). Analysis at the time concluded that the the majority of the successional classes (S-Class) were moderately departed (VCC 2) from the reference distribution. The exceptions were the Rocky Mountain Subalpine Dry-Mesic Spruce-Fir Forest and Woodland BpS—in the Absaroka and Teton landscapes—and the Middle Rocky Mountain Montane Douglas-fir Forest and Woodland BpS, where S-Class distributions were calculated to be within the historical range of variation (HRV) of the reference condition (VCC 1). The characteristics leading to this departure are variable by BpS and landscape but there are some general trends worth noting. First, there is a surplus of late development and deficit of mid-development S-Classes across the forested BpSs. This trend may be in part due to minimal disturbance events occurring in the mid- to late 1900’s (Helmbrecht et al. 2012). Recent large fires and insect damage since 2012 have undoubtedly altered the S-Class distribution towards more early-successional classes compared to late structure while also increasing snag availability. Overall, the BTNF provides a diversity of forested structural stages to include snags that provide habitat for the Little Brown Myotis across the Forest.</p>
--	---

Species (Scientific and Common Name) ***Myotis lucifugus* [Little Brown Myotis]**

Criteria	Rationale
	<p><u><i>Riparian Habitat:</i></u> Bat habitat increases in value when it provides roosts, foraging habitat, and water in close proximity, so that the energetic costs of commuting are reduced. Many riparian corridors provide all three of these habitat components, as well as travel corridors for commuting and migrating, making them extremely valuable. Many insect species breed in and emerge from the water, and bats such as the Little Brown Myotis feed directly over the water’s surface on these aquatic insects (Pierson 1998; Grindal et al. 1999 in Hester and Grenier 2005).</p> <p>The physical characteristics that influence bat use in riparian areas include structure and composition of the vegetation, abundance and suitability of snags and other roosts, availability of water, and water quality (Hester and Grenier 2005). The riparian vegetation community on the BTNF is well distributed and covers 3.1 percent of the total acres on the Forest (Map 5). Of this habitat type, willow communities comprise 2.6 percent (91,303 acres) and herbaceous communities are 0.5 percent (17,402 acres). Cottonwood communities occupy 399 acres (approximately 0.00012 percent) of the Forest. Most impacts to riparian systems on the forest are a result of motorized recreation and domestic livestock grazing which can impact water quality, streambank stability and vegetation. Since 1990, there has been a significant reduction in the number of active livestock grazing allotments across the Forest. Many have been closed, vacated or placed in forage reserve status in response to grizzly bear conflicts and/or concerns over disease transmission between domestic sheep and bighorn sheep. Currently, active grazing allotments are located on ~45% of the Forest. Additionally, the forest has implemented travel management to address off-road motorized use and 1.41 million acres of the BTNF is designated as Wilderness or Wilderness Study Area. Additionally, 1.43 million acres are considered Roadless.</p>
Vulnerability of Habitats on the Bridger-Teton National Forest	<p><u><i>White-nose Syndrome (WNS):</i></u> WNS has killed millions of bats in North America and at some sites, 90 to 100 percent of bats have died. Several species are affected, and the Little Brown Myotis is considered one of those that can be severely impacted by the disease (USFWS 2018). According to the WGFD (2017), WNS is considered the greatest threat to the species. It is estimated that at least one million Little</p>

Species (Scientific and Common Name) ***Myotis lucifugus* [Little Brown Myotis]**

Criteria	Rationale
----------	-----------

	<p>Brown Myotis have died from WNS in the northeastern United States between 2006 and 2010 (Kunz and Reichard 2010) and the species is predicted to be extirpated there by 2026. A Little Brown Myotis was discovered in May 2018, at Fort Laramie National Historic Site in Goshen County, Wyoming with the fungus (<i>Pd</i>) that causes WNS, the first such finding in the state. <i>Pd</i> was confirmed in Lincoln County in 2021-2022, and in Teton County in 2023-2024 (https://www.whitenosesyndrome.org/, accessed 4/17/2025).</p> <p>However, it is important to note that WNS predominantly affects hibernating bats. <i>Pd</i> thrives in cold, damp places where bats hibernate for the winter. <i>Pd</i> attacks and grows on bats while they're in an inactive state of hibernation. The fungus damages skin so much that bats warm up and become active, wasting energy they need to make it through the winter. Scientists confirm WNS by looking at skin under a microscope, bats with WNS have small pockets in their skin caused by <i>Pd</i> infection (USFWS 2018). There are currently no identified bat hibernacula on the BTNF and it is thought that the caves located across the Forest do not provide the necessary micro-climate to serve as hibernacula (Gerber 1991). The few known Little Brown Myotis hibernacula sites in Wyoming are east of the BTNF at lower elevations.</p> <p><u><i>Wind Turbines:</i></u></p> <p>This species commonly incurs mortality by turbines at wind energy facilities, although much less so than hoary and silver-haired bats. Approximately 51,600-107,000 Little Brown Myotis were killed at wind energy facilities in Canada and the US between 2000-2011 (Arnett and Baerwald 2013). Wind energy development is expected to expand five-fold by 2030, which could pose a substantial impact. However, there are no wind energy facilities on the Forest nor are there any projected in the foreseeable future.</p> <p><u><i>Climate Change:</i></u></p> <p>Changes in climate could exacerbate the loss and degradation of riparian areas and water resources important for foraging bats, although the magnitude of effect is not known (Halofsky et al. 2018). To project the future climate and impacts to resources in the Intermountain Region including the BTNF, the Intermountain Adaptation Partnership (IAP) used Representative Concentration Pathway [RCP] 4.5 and 8.5, which capture a moderate and high future warming,</p>
--	--

Species (Scientific and Common Name) ***Myotis lucifugus* [Little Brown Myotis]**

Criteria	Rationale
	<p>respectively (Halofsky et al. 2018). Although pathways predicting lower warming exist, the 4.5 and 8.5 pathways were chosen by the IAP because they are, in comparison, well studied providing a large set of projections that enhance our understanding of the possible range in future climate.</p> <p>Although uncertainty exists about the magnitude and rate of climate change, warming temperatures are the most certain consequence of increased CO₂ in the atmosphere. By 2100, median minimum and maximum temperature in the Southern Greater Yellowstone subregion, which includes the BTNF, is projected to rise about 5-6°F under the moderate warming scenario and 11-12°F under the high warming scenario. Regardless of scenario, the greatest departure from historical seasonal minimum temperatures occurs in the summer. Annual precipitation projections are highly variable with no discernible trend under moderate warming and a slight increasing trend with high warming (Joyce and Talbert 2018). However, riparian systems are one of the most vulnerable vegetation types in a warmer climate because of reduced water availability during the growing season (Behrens et al. 2018).</p> <p><u><i>Forested Habitat:</i></u></p> <p>This species is vulnerable to roost disturbance and destruction, including removal of important maternal roost trees within forested habitat from fire and timber harvest. Climate warming may increase snags on the landscape through greater tree mortality due to increased fire intensity, size, and frequency as well as due to insect outbreaks (Behrens et al. 2018). However, deforested stands may not provide suitable roosting habitat for the species. Impacts of timber harvest will likely result in minimal impacts since this is a relatively small program on the 3.4 million acre BTNF, especially when compared to natural events such as insect outbreaks and wildfires (Map 4).</p>

Summary and recommendations: The Little Brown Myotis is a widespread, common species and is found throughout the BTNF. Although ample summer roost features are available, the Forest likely does not provide caves and/or mines that serve as hibernacula. Snag and tree features that can be utilized for maternal roosts are well distributed throughout the Forest and the species' ability to move between features if thermal requirements are met reduces the concern associated with changes projected from climate warming. Wind energy facilities are not a concern on the BTNF at this time or the foreseeable future. The biggest threat to this species is WNS; however, the BTNF is not known to provide hibernacula for this species. Bats hibernating in

Species (Scientific and Common Name) <i>Myotis lucifugus</i> [Little Brown Myotis]	
Criteria	Rationale
	<p>caves/mines are most susceptible to contracting <i>Pd</i> and subsequently developing WNS. Overall, the BTNF provides suitable summer roosting habitat throughout the Forest and impacts from grazing and motorized travel to riparian corridors have decreased since 1990. There are no wind energy facilities on the forest and no known caves/mines that serve as hibernacula for the species. Thus, at this time, there is no concern for this species capability to persist on the planning unit and therefore it is recommended that the Little Brown Myotis is not a Species of Conservation Concern for the Bridger-Teton National Forest.</p> <p>Literature Cited:</p> <p>Arnett, E.B., and E.F. Baerwald. (2013). Impacts of wind energy development on bats: implications for conservation. Pages 435-456 in R. A. Adams and S. C. Pedersen (editors). <i>Bat evolution, ecology, and conservation</i>. Springer Science+Business Media, New York.</p> <p>Behrens, P.N., R.E. Keane, D.L. Peterson, and J.J. Ho. (2018). Chapter 6: effects of climatic variability and change on forest vegetation. In Halofsky, Jessica E.; Peterson, David L.; Ho, Joanne J.; Little, Natalie, J.; Joyce, Linda A., eds. (2018). <i>Climate change vulnerability and adaptation in the Intermountain Region</i>. Gen. Tech. Rep. RMRS-GTR-375. Fort Collins, CO: U.S. Department of Agriculture, Forest Service, Rocky Mountain Research Station. Part 1. pp. 1–197.</p> <p>Fenton, M. B., and Barclay, R. M. R. (1980). <i>Myotis lucifugus</i>, <i>Mammalian Species</i> 142, 1-8.</p> <p>Frick, W. F., Pollock, J. F., Hicks, A. C., Langwig, K. E., Reynolds, D. S., Turner, G. G., Butchkoski, C. M., and Kunz, T. H. (2010). An Emerging Disease Causes Regional Population Collapse of a Common North American Bat Species, <i>Science</i> 329, 679-682.</p> <p>Froschauer, A., and Coleman, J. (2012) North American bat death toll exceeds 5.5 million from white-nose syndrome, United States Fish and Wildlife Service.</p> <p>Garber, C.S. (1991). A survey for Townsend’s big-eared bat (<i>Plecotus townsendii</i>) and the spotted bat (<i>Euderma maculate</i>) on the Bridger-Teton and Targhee National Forests in Wyoming. Wyoming Natural Diversity Database, Laramie, WY.</p> <p>Hester, S. G., and Grenier, M. B. (2005). A conservation plan for bats in Wyoming, Wyoming Game and Fish Department Nongame Program, Lander, WY.</p> <p>Halofsky, Jessica E.; Peterson, David L.; Ho, Joanne J.; Little, Natalie, J.; Joyce, Linda A., eds. (2018). <i>Climate change vulnerability and adaptation in the Intermountain Region</i>. Gen. Tech. Rep. RMRS-GTR-375. Fort Collins, CO: U.S. Department of Agriculture, Forest Service, Rocky Mountain Research Station. Part 1. pp. 1–197.</p>

Species (Scientific and Common Name) <i>Myotis lucifugus</i> [Little Brown Myotis]	
Criteria	Rationale
	<p>Joyce, L.A. and M. Talbert. (2018). Chapter 3: Historical and projected climate. In Halofsky, Jessica E.; Peterson, David L.; Ho, Joanne J.; Little, Natalie, J.; Joyce, Linda A., eds. (2018). Climate change vulnerability and adaptation in the Intermountain Region. Gen. Tech. Rep. RMRS-GTR-375. Fort Collins, CO: U.S. Department of Agriculture, Forest Service, Rocky Mountain Research Station. Part 1. pp. 1–197.</p> <p>Kunz, T. H., and Reichard, J. D. (2010). Status review of the Little Brown Myotis (<i>Myotis lucifugus</i>) and determination that immediate listing under the Endangered Species Act is scientifically and legally warranted, p 31, Boston University's Center for Ecology and Conservation Biology.</p> <p>NatureServe. (2018). NatureServe Explorer: An online encyclopedia of life [web application]. Version 7.1. NatureServe, Arlington, Virginia. Available http://explorer.natureserve.org. (Accessed: September 12, 2018).</p> <p>Schwab, N.A. (2006). Roost-site selection and potential prey sources after wildland fire for two insectivorous bat species (<i>Myotis evotis</i> and <i>Myotis lucifugus</i>) in mid-elevation forests of western Montana. M.S. Thesis, University of Montana, Missoula.</p> <p>USFWS. (2018). White-nose syndrome webpage. https://www.whitenosesyndrome.org/.</p> <p>USFWS. 2023. National Listing Workplan. Online. Available: https://www.fws.gov/project/national-listing-workplan.</p>
Evaluator(s): Randall Griebel	Date: September 21, 2018