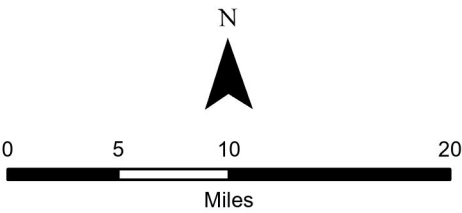
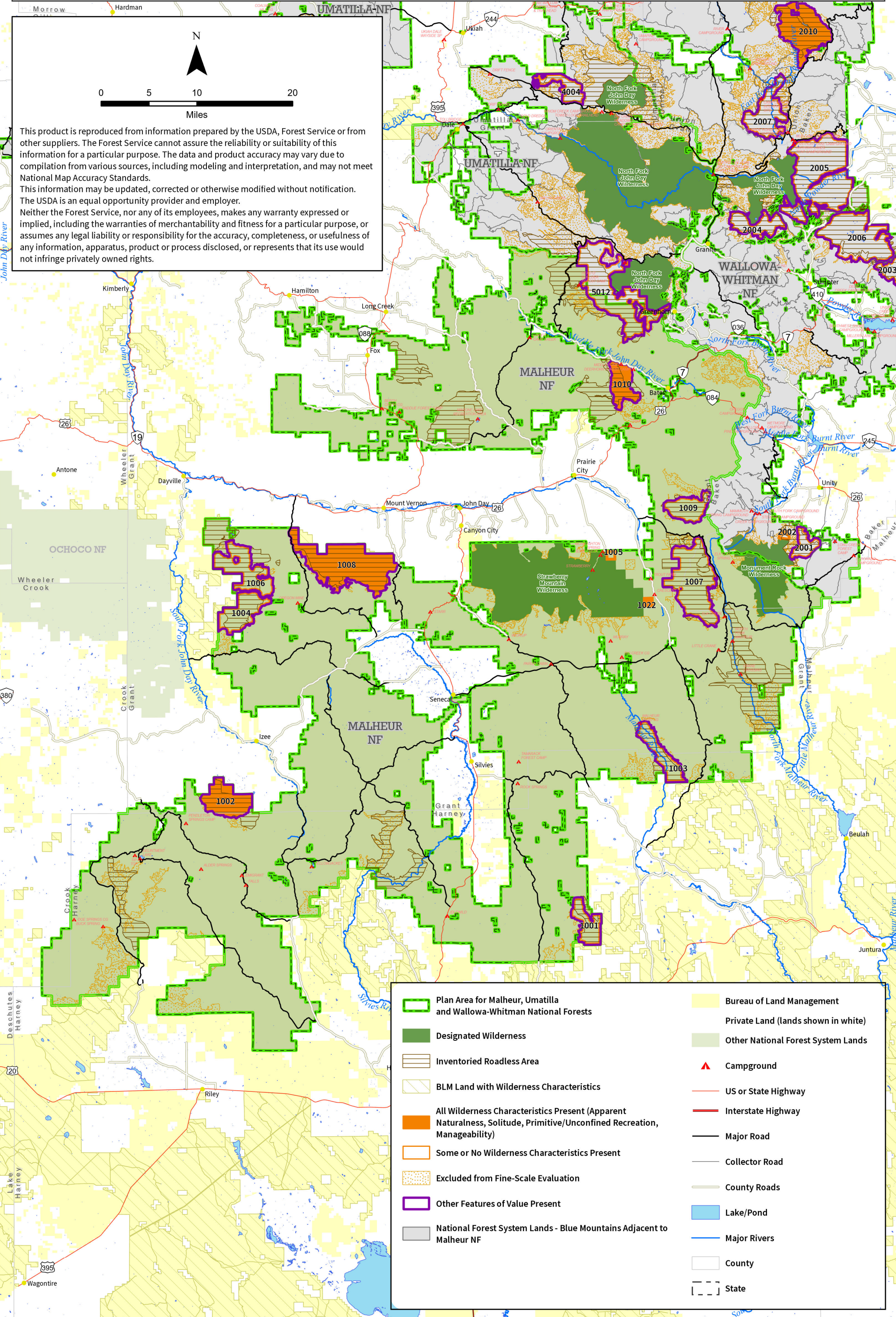


MALHEUR NATIONAL FOREST PLAN REVISION

DRAFT Evaluation of Wilderness Characteristics (FSH 1909.12, 72)



This product is reproduced from information prepared by the USDA, Forest Service or from other suppliers. The Forest Service cannot assure the reliability or suitability of this information for a particular purpose. The data and product accuracy may vary due to compilation from various sources, including modeling and interpretation, and may not meet National Map Accuracy Standards. This information may be updated, corrected or otherwise modified without notification. The USDA is an equal opportunity provider and employer. Neither the Forest Service, nor any of its employees, makes any warranty expressed or implied, including the warranties of merchantability and fitness for a particular purpose, or assumes any legal liability or responsibility for the accuracy, completeness, or usefulness of any information, apparatus, product or process disclosed, or represents that its use would not infringe privately owned rights.



- | | |
|---|-------------------------------------|
| Plan Area for Malheur, Umatilla and Wallowa-Whitman National Forests | Bureau of Land Management |
| Designated Wilderness | Private Land (lands shown in white) |
| Inventoried Roadless Area | Other National Forest System Lands |
| BLM Land with Wilderness Characteristics | Campground |
| All Wilderness Characteristics Present (Apparent Naturalness, Solitude, Primitive/Unconfined Recreation, Manageability) | US or State Highway |
| Some or No Wilderness Characteristics Present | Interstate Highway |
| Excluded from Fine-Scale Evaluation | Major Road |
| Other Features of Value Present | Collector Road |
| National Forest System Lands - Blue Mountains Adjacent to Malheur NF | County Roads |
| | Lake/Pond |
| | Major Rivers |
| | County |
| | State |