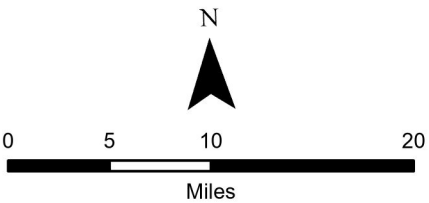
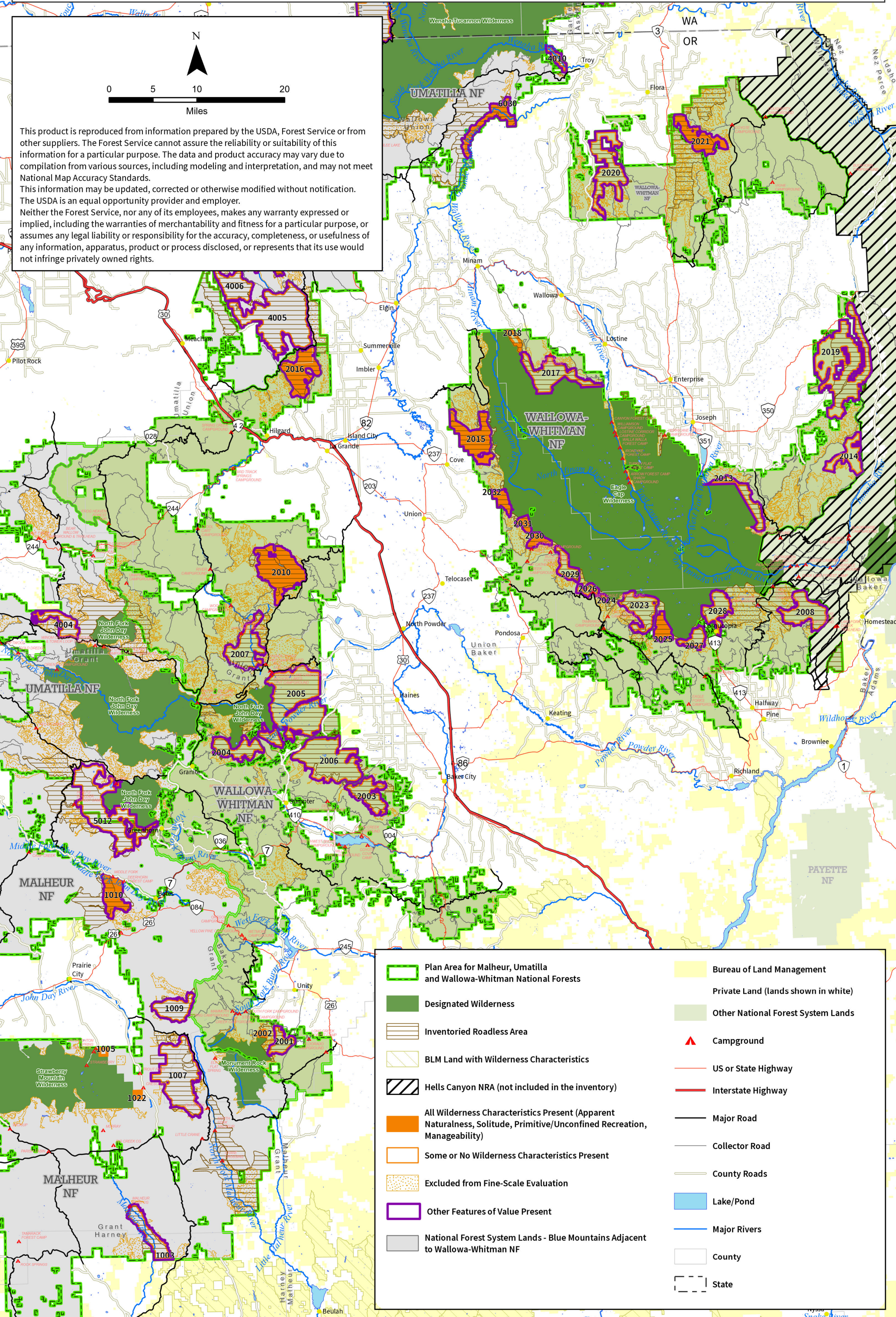


WALLOWA-WHITMAN NATIONAL FOREST PLAN REVISION

DRAFT Evaluation of Wilderness Characteristics (FSH 1909.12, 72)



This product is reproduced from information prepared by the USDA, Forest Service or from other suppliers. The Forest Service cannot assure the reliability or suitability of this information for a particular purpose. The data and product accuracy may vary due to compilation from various sources, including modeling and interpretation, and may not meet National Map Accuracy Standards. This information may be updated, corrected or otherwise modified without notification. The USDA is an equal opportunity provider and employer. Neither the Forest Service, nor any of its employees, makes any warranty expressed or implied, including the warranties of merchantability and fitness for a particular purpose, or assumes any legal liability or responsibility for the accuracy, completeness, or usefulness of any information, apparatus, product or process disclosed, or represents that its use would not infringe privately owned rights.



- Plan Area for Malheur, Umatilla and Wallowa-Whitman National Forests

Designated Wilderness

Inventoried Roadless Area

BLM Land with Wilderness Characteristics

Hells Canyon NRA (not included in the inventory)

All Wilderness Characteristics Present (Apparent Naturalness, Solitude, Primitive/Unconfined Recreation, Manageability)

Some or No Wilderness Characteristics Present

Excluded from Fine-Scale Evaluation

Other Features of Value Present

National Forest System Lands - Blue Mountains Adjacent to Wallowa-Whitman NF
- Bureau of Land Management

Private Land (lands shown in white)

Other National Forest System Lands

Campground

US or State Highway

Interstate Highway

Major Road

Collector Road

County Roads

Lake/Pond

Major Rivers

County

State