



LAKE LIZZIE CONSERVATION AREA ON THE FLORIDA NATIONAL SCENIC TRAIL

ABOUT LAKE LIZZIE CONSERVATION AREA

The 1,076 acre preserve is located on Lake Lizzie, Bay Lake and Trout Lake in the Upper Kissimmee Chain of Lakes. The site was historically used for cattle ranching and turpentine production before it was acquired by Osceola County in 1998. Lake Lizzie Conservation Area consists of several parcels purchased with funds from both the state Conservation and Recreational Lands Program and the Environmental Lands Conservation Program, formerly known as SAVE Osceola. The preserve now features 11 miles of hiking trails, 9 miles of equestrian trails and a primitive campsite.



GET INVOLVED IN YOUR LOCAL FLORIDA TRAIL ASSOCIATION CHAPTER!

The Indian River Chapter is one of 18 regional Florida Trail Association chapters, and is responsible for building and maintaining more than 120 miles of trail. The chapter maintains trails that wind through the Three Lakes, Bull Creek, Triple N Ranch, and Tosohatchee Wildlife Management Areas. The chapter offers frequent opportunities for its wider community to experience the outdoors. Activities include not only trail maintenance hikes, but also leisure hikes as well as camping, backpacking, sightseeing, swimming, and paddling. We also offer full moon hikes, beach strolls, and lighthouse tours. Our monthly chapter meetings feature presentations on long-distance hikes, skill-building exercises, and knowledge exchange. Check us out at www.meetup.com/SpaceCoastHiking/, or on the Florida Trail Association website, www.FloridaTrail.org.



THE FLORIDA TRAIL IN LAKE LIZZIE

Going northbound, the trail begins by rounding the Marsh Loop, then continues east 1.2 miles before turning north. Continue another 0.75 miles to the intersection of a blue blazed spur trail that leads to a campsite and scenic view of Lake Lizzie. The north trailhead is another 0.3 miles north of the intersection of the blue spur trail.



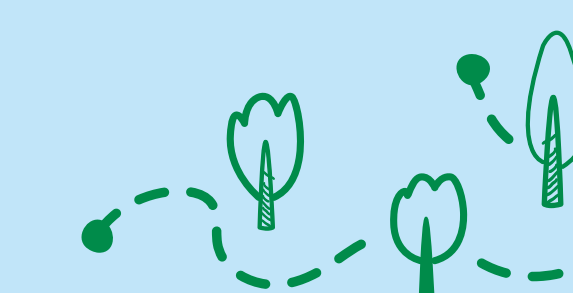
ALLOWABLE USES

Hiking and non-motorized biking are allowed along this section the Florida Trail. Leashed pets are allowed. Equestrian are allowed except on the Marsh Loop.



TRAIL LENGTH

Lake Lizzie hosts 3.5 miles of the Florida Trail between the Old Melbourne Hwy and Midland Dr.



CAMPING

Camping can be reserved online at <https://apm.activecommunities.com/osceolaparks> or by calling (407) 742-0200 during business hours.

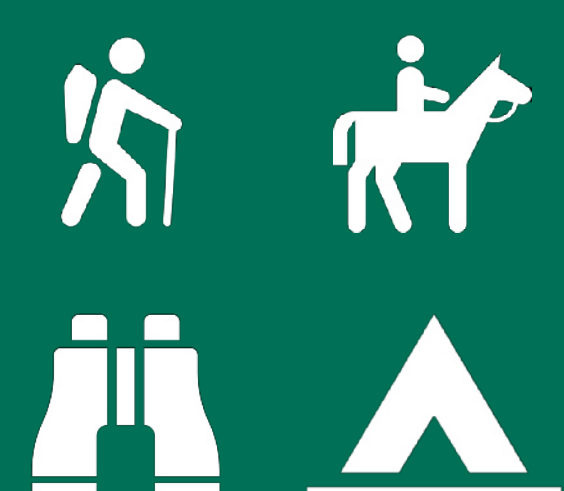
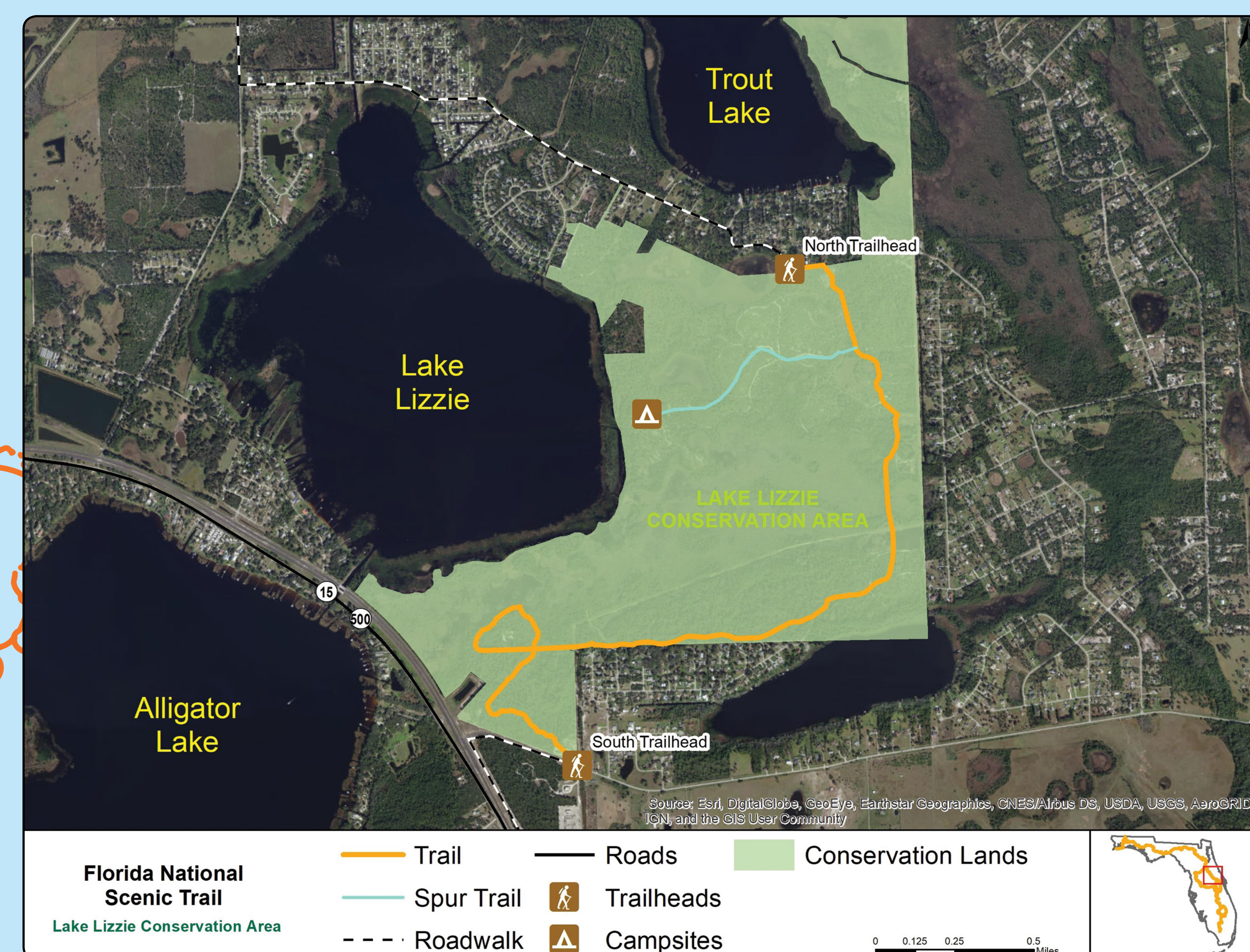


SAFETY INFORMATION

Heat and humidity can be challenging to hikers. Please pack adequate water and snacks with you on the trail. Be sure to pack out any waste. A full brimmed hat and sunscreen are recommended.



Please report any negative trail conditions to the Florida Trail Association at 1-877-HIKEFLA.



To learn more about the Florida Trail, please scan the QR code or visit our websites below. Here you can find more information about hikes in your area, purchase maps of the Florida Trail, or discover volunteer opportunities on the trail! www.fs.usda.gov/fnst or www.floridatrail.org. Visit the Osceola County website for more information about local recreation: www.osceola.org

