



PNW Ecology Program Irreplaceable Services

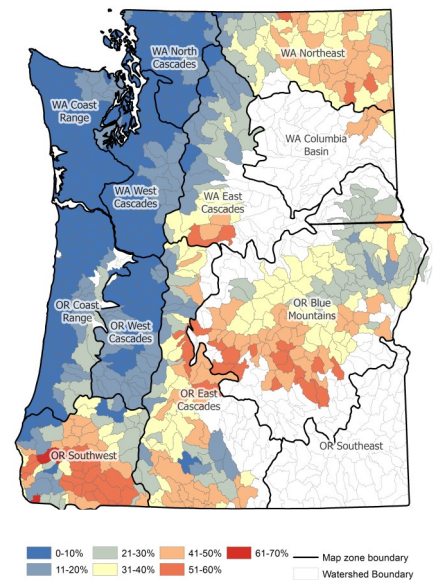
- **Expansion of American Timber Production.** The PNW Ecology Program was born in the high timber production era when leaders recognized the need to cut smartly and in the right places. We are uniquely positioned to link timber production with restoration goals. We maintain and consistently modernize 50 years of place-based legacy products which guides timber and restoration for each different sub-region in R6. We provide guidance on site productivity predictions for wildfire/drought resilient forest stocking levels. We work to untangle legacy ‘protection’ standards (e.g. 21” rule via East-Side Screens) to create “win-win” solutions for forest protection and meeting timber/restoration goals.
- **Filling Capacity Gaps to Complete Necessary Work.** We are capable of filling many different expertise gaps created by recent staff reductions. We can plug into: NEPA planning as Environmental Coordinators and most specialist disciplines, survey needs in the absence of temporary staff, silvicultural tasks, rangeland management, timber and fuels support, GIS analysis and forest plan revision. We possess an uncommon breadth of natural resource experience and knowledge.
- **Wildfire Management and Disaster Recovery.** We contribute as wildfire suppression militia, Resource Advisors, Burned Area Emergency Response specialists, prescribed burn implementers, and geospatial support. We are experts in post-fire restoration.
- **Wildfire Risk Reduction (fuels).** We support wildfire risk reduction work by assessing the most strategic locations to remove timber and reduce fuels in ways that protect communities and other valued resources. We engage in essential prescribed burn planning and implementation, and communicate the importance of fuel reduction to reduce risk of catastrophic wildfires to the public.

- **Sustainable Rangeland Management.** We have a long history of working with range programs in developing management strategies for sustainable livestock production, post-fire grazing return recommendations, monitoring in uplands and riparian areas and in engaging with permittees.

- **Innovation and Strategy.** We provide cross-discipline vision on how to accomplish critical work efficiently and in novel ways. We are ‘systems thinkers’ who connect the big picture to details and identify gaps and redundancies in organizations to accomplish work in new formats. We design tools to plan implementation innovatively. We serve as a pipeline of new technology into fuel reduction, forestry and range work. We develop technical guidance, geospatial analysis, and strategic landscape prioritization of timber and fuels treatments.

- **CFLRP Function and Partnerships.** We are vital to Collaborative Forest Landscape Restoration Program (CFLRP), a proven program supporting rural communities with fuels reduction and employment. At regional and local levels, we serve as CFLRP coordinators, CFLRP monitoring coordinators, and on steering committees. We developed the Common Monitoring Strategy, adaptive management approach, and fill critical monitoring gaps by collecting and analyzing data. We also maintain other partnerships to leverage additional capacity to accomplish critical work in timber, fuel reduction, rangeland management and restoration.

- **Local Knowledge Stewards.** We steward 50 years of ecology and institutional knowledge, including studies and unpublished data that inform place-based management and would be lost without transition to future ecologists. Our past and current products provide the basis for sustainable timber and grazing programs today.



Assessment of ecological departure across the PNW and flagship PNW Ecology Program product.



- **Training.** We are an in-house source of required training for silviculture, range and timber staff to perform basic functions. We sustain an interwoven network of the program across the agencies, Tribes, universities and other NGOs that facilitates peer learning and technology transfer to District, Forest and Regional staff.

- **Credibility and Accountability.** We are advisors for line officers and provide technical expertise and monitoring for controversial projects. We maintain skills and continuity to assess potential long-term and large-scale effects of management decisions.

- **Litigation Support.** We manage litigation risk expense and have a long history of providing litigation support to range, timber and fuel reduction efforts. Provides data and expert opinion in court cases, which have been previously upheld in the 9th Circuit Court of Appeals.