

SANDY RIDGE TRAIL SYSTEM

Learning to Share



Zach Jarrett
Outdoor Recreation Planner
Oregon/Washington State Office
Bureau of Land Management

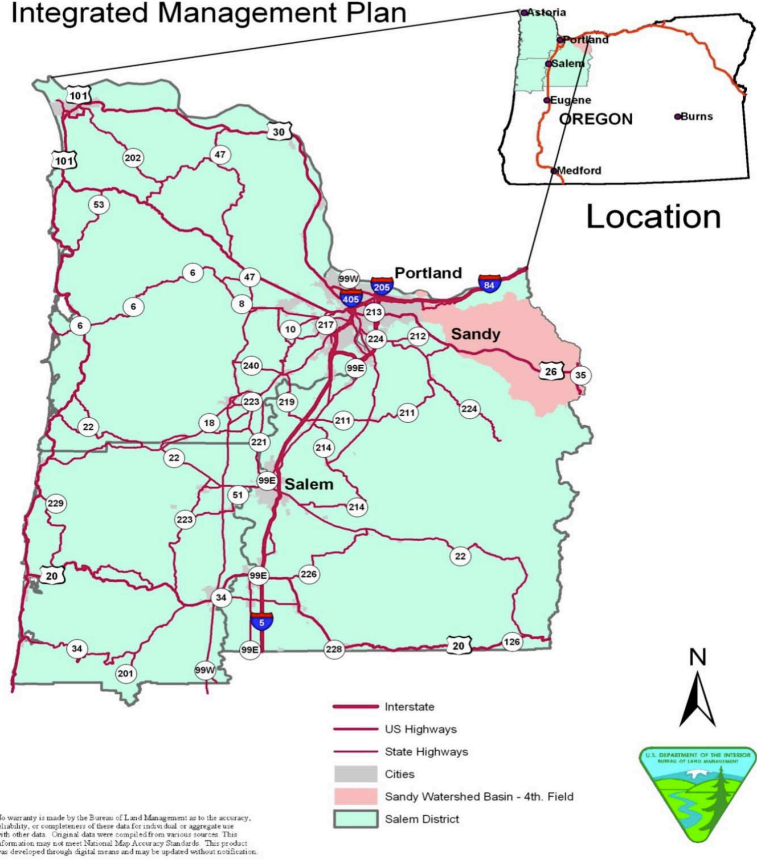


Corbin Murphy
Wildlife Biologist
Northwest Oregon District
Bureau of Land Management

Corvallis, Oregon May 7, 2018

PROJECT BACKGROUND AND HISTORY

Sandy River Basin Integrated Management Plan



- Land Acquisitions
- Visioning
- Integrated Planning

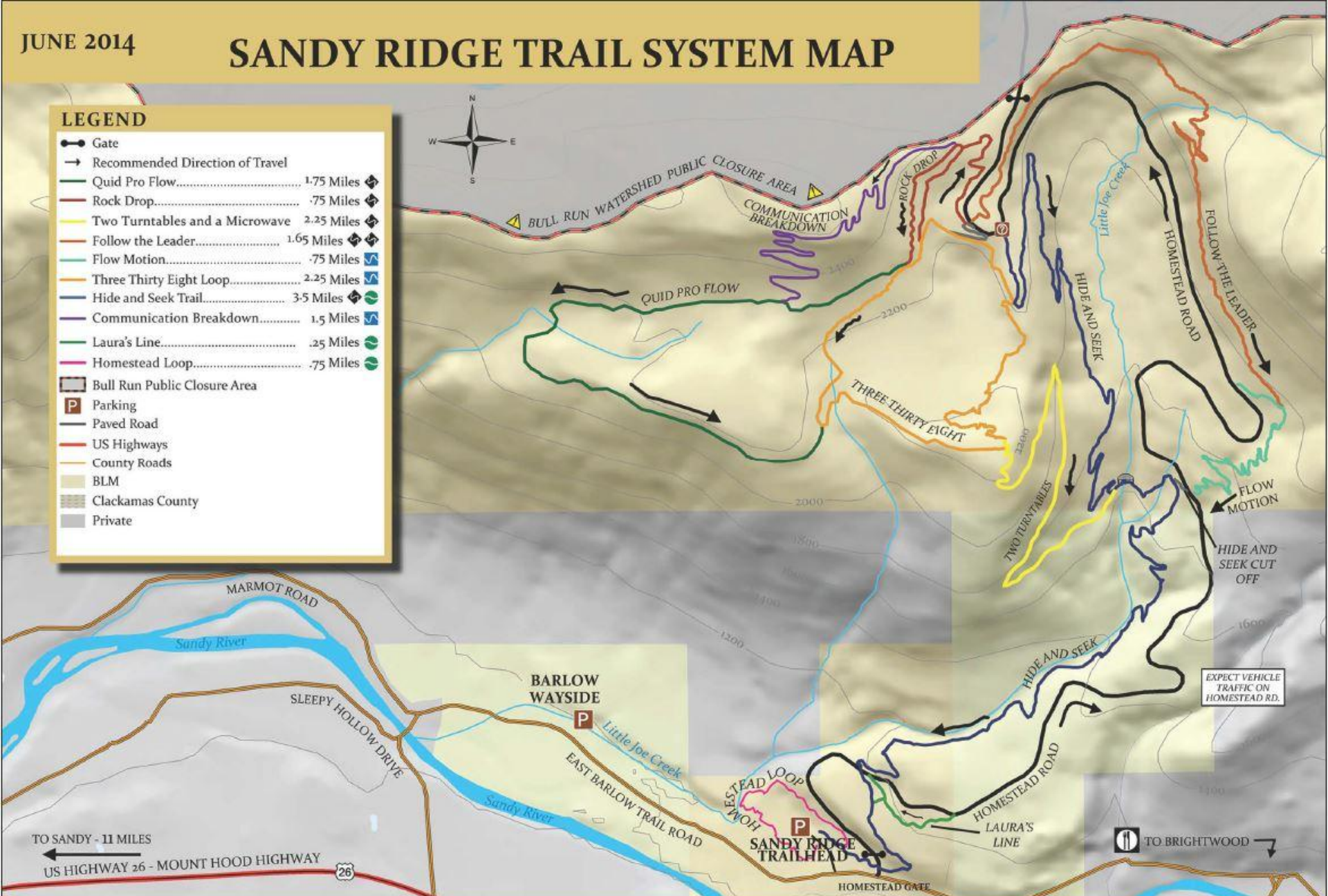
Table 14: Benefits Based Management Framework -Confluence Recreation Site and Homestead Trail System

<p>Management Objectives</p>	<p>By the year 2010 manage the zone to provide visitors the opportunity to engage in <i>non motorized single track day use mountain biking and hiking recreation</i>, providing no less than 75% of responding users at least a “moderate” realization of these benefits (i.e. 3.0 on a Likert scale of 1 to 5).</p>	
<p>Primary Activities</p>	<p>Visitors will engage in day hiking, mountain biking, boating and day use picnicking.</p>	
<p>Outcomes</p>		
<p>Experiences</p>	<p>Benefits</p>	
<p>Enjoying frequent exercise</p>	<p><i>Household and Community</i></p>	
<p>Enjoying strenuous exercise</p>	<p>Heightened sense of community pride and satisfaction</p>	
<p>Enjoying closeness of family and friends</p>	<p><i>Economic</i></p>	
<p>Testing your endurance</p>	<p>Increased recognition of the Mt. Hood Corridor as a desired destination for single track trail</p>	
<p>Developing skills and abilities</p>	<p>opportunities</p>	
<p>Promoting self confidence</p>	<p>Enhancement of gateway communities' distinct recreation tourism niche</p>	
<p>Enjoying quality Pacific Northwest singletrack</p>	<p>Increased local tourism revenue</p>	
	<p>Reduced health maintenance costs</p>	
	<p><i>Personal</i></p>	
	<p>Improved health maintenance</p>	
	<p>Restored mind from unwanted stress</p>	
	<p>Greater cultivation of outdoor oriented lifestyle</p>	
	<p>Greater freedom from urban living</p>	
	<p>Greater aesthetic appreciation</p>	
<p>Setting Prescriptions</p>		
<p>Physical</p>	<p>Social</p>	<p>Administrative</p>
<p>Developed character along Barlow Trail Rd; Middle and Backcountry character as you progress north through the trail system. Mostly natural in appearance, with low levels of developed facilities including trails, restrooms and wayfinding signage.</p>	<p>Small group sizes within developed zone, designed for staging to upland trails and river-based use. Trail encounters could range from 15-20 in the developed and middle zones, and less than 10 in the backcountry zone. Higher encounter rates along river and within developed site.</p>	<p>Brochures will be available for information and opportunities. Rules and regulations clearly posted at site. Agency personnel periodically available. Adopt-a-Trail agreement established for creation and maintenance of resources. Memorandum of Understanding established with County for co-management responsibilities.</p>

SANDY RIDGE TRAIL SYSTEM MAP

LEGEND

- Gate
- Recommended Direction of Travel
- Quid Pro Flow..... 1.75 Miles
- Rock Drop..... .75 Miles
- Two Turntables and a Microwave..... 2.25 Miles
- Follow the Leader..... 1.65 Miles
- Flow Motion..... .75 Miles
- Three Thirty Eight Loop..... 2.25 Miles
- Hide and Seek Trail..... 3.5 Miles
- Communication Breakdown..... 1.5 Miles
- Laura's Line..... .25 Miles
- Homestead Loop..... .75 Miles
- Bull Run Public Closure Area
- Parking
- Paved Road
- US Highways
- County Roads
- BLM
- Clackamas County
- Private



TO SANDY - 11 MILES
 ← US HIGHWAY 26 - MOUNT HOOD HIGHWAY

EXPECT VEHICLE TRAFFIC ON HOMESTEAD RD.

TO BRIGHTWOOD →



BIKE OPTIMIZED DESIGN

SPACING/FREQUENCY OF FEATURES

UNDULATIONS IN TREAD TO ENHANCE USER EXPERIENCE AND FACILITATE DRAINAGE. FREQUENCY, LENGTH - VARIES WITH LANDSCAPE, RATING, DESIRED TRAIL EXPERIENCE.



MINI-BERM

MINI-BERM

TABLE

ROLLER



Increasing Recreation Visitation



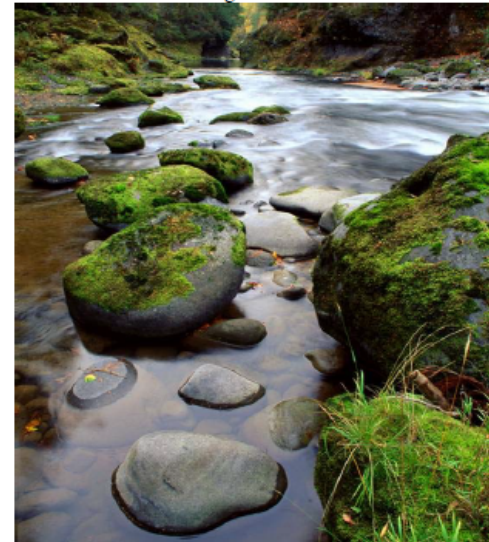
WILDLIFE BACKGROUND

- 2008 NEPA analysis through a Basin wide programmatic EA.
- wildlife focused on Special Status Species (ie T&E, S&M, migratory birds and Bureau Sensitive).
- Scoping was sent out to State Agencies, Tribes and interested public.

Sandy River Basin Integrated Management Plan
Environmental Assessment and Finding of No Significant Impact

Environmental Assessment Number OR080-08-16

August 2008



Sandy Wild and Scenic River

United States Department of the Interior
Bureau of Land Management, Salem District
Multnomah and Clackamas Counties, Oregon

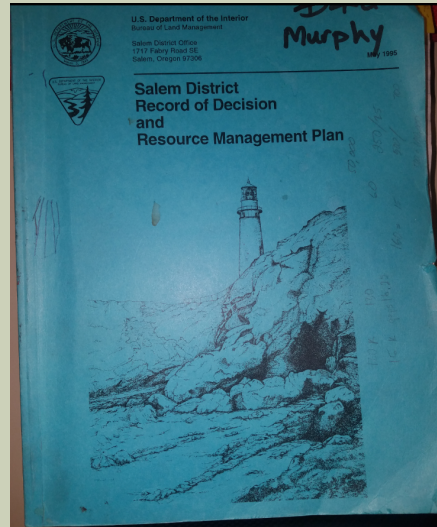
T1-3S., R. 4-7E.; W.M. within the Sandy River Basin

Responsible Agency: USDI - Bureau of Land Management

THESE...



ELK?



Management
Actions/Direction —
Roosevelt Elk

In areas with elk habitat, close and rehabilitate roads unneeded for continued resource management or use. A general target for roads open to motorized use is 1.5 miles or less per square mile. Avoid constructing roads in areas with high elk value such as breeding sites.

Through watershed analyses, address public vehicle use of elk habitat areas. The following areas will be given priority for analysis:

- Alsea Falls vicinity (700 acres)
- Bummer Ridge (2,100 acres)
- Clarence Creek area (300 acres)
- Dead Horse Canyon (1,600 acres)
- East Creek (800 acres)
- Elk Creek/Bear Creek area (2,200 acres)
- Fall Creek (2,600 acres)
- Fan Creek (1,000 acres)
- Green Peter Peninsula area (1,900 acres)
- Homestead Road area (1,700 acres)
- Little North Fork Wilson River area (500 acres)
- North Fork Siletz River area (6,400 acres)
- Skunk Creek (700 acres)
- Tillamook Ridge (700 acres)

Keep major game trails clear of slash accumulations caused by thinning projects.

Conduct forage seeding in habitat areas (200 to 500 acres per year) with appropriate seed beds and where compatible with other management objectives.

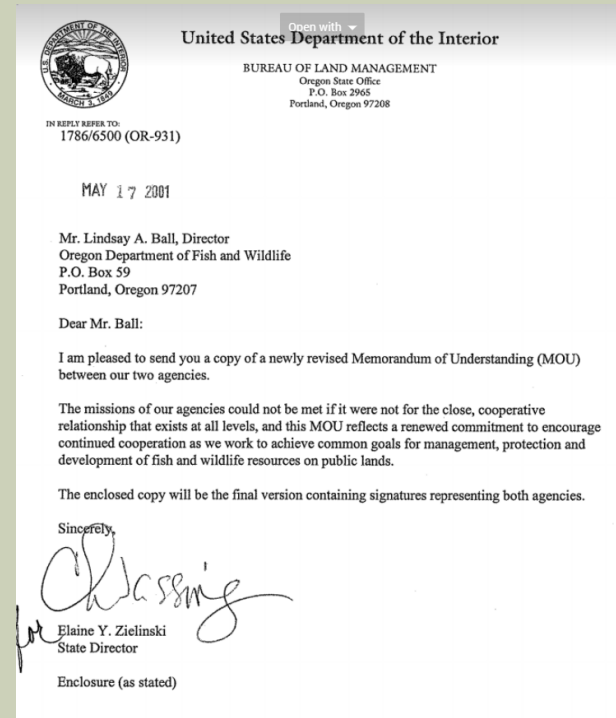
MANAGEMENT DIRECTION – ROOSEVELT ELK:

- ✓ Close and rehab roads (1.5 miles or less per square mile).
- ✓ Avoid constructing roads.
- ✓ Through Watershed Analysis address public vehicle use in the following areas:
Homestead Road area (1,700 acres).
- ✓ Keep game trails clear of slash.
- ✓ Conduct forage seeding in 200-500 acres per year!



BLM AND ODFW MOU....

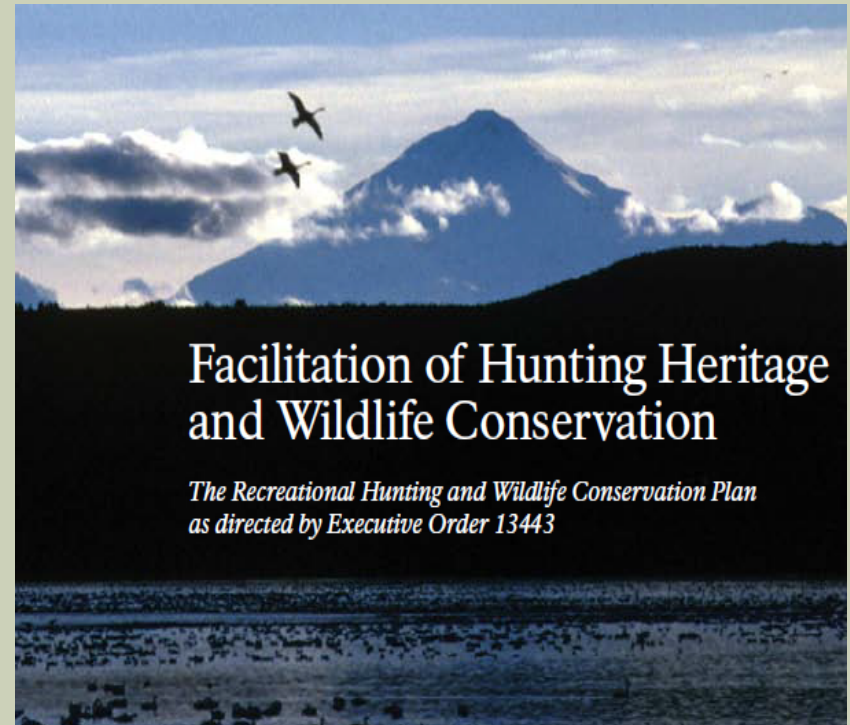
- Scoping went to ODFW headquarters...
- Engage with the local state wildlife biologist early and often!



2. Promote a collaborative approach in managing a variety of recreation, wildlife, and fish use opportunities; e.g., employing best management practices, public land access, wildlife viewing sites, through joint planning and program development that is consistent with Oregon public land health standards.

2008 EXECUTIVE ORDER

- (d) Work collaboratively with State governments to manage and conserve game species and their habitats in a manner that respects private property rights and State management authority over wildlife resources;
- (e) Establish short and long term goals, in cooperation with State and tribal governments, and consistent with agency missions, to foster healthy and productive populations of game species and appropriate opportunities for the public to hunt those species;



HELPED IDENTIFY ISSUES

Mountain Biker

- Winter range – low elevation snow free south facing slopes
- Activity focused close (within an hour drive) to nesting/ roosting habitat (major metropolitan areas)
- Possible symbiotic relationship with *Canis lupus familiaris*
- Sometimes nocturnal (night rides)
- Utilizes benches and ridge lines for trail building



Elk

- Winter range – low elevation snow free south facing slopes
- Avoids human activity
- Does not like dogs
- Sometimes active at night to avoid human interaction
- Utilize benches and ridge lines



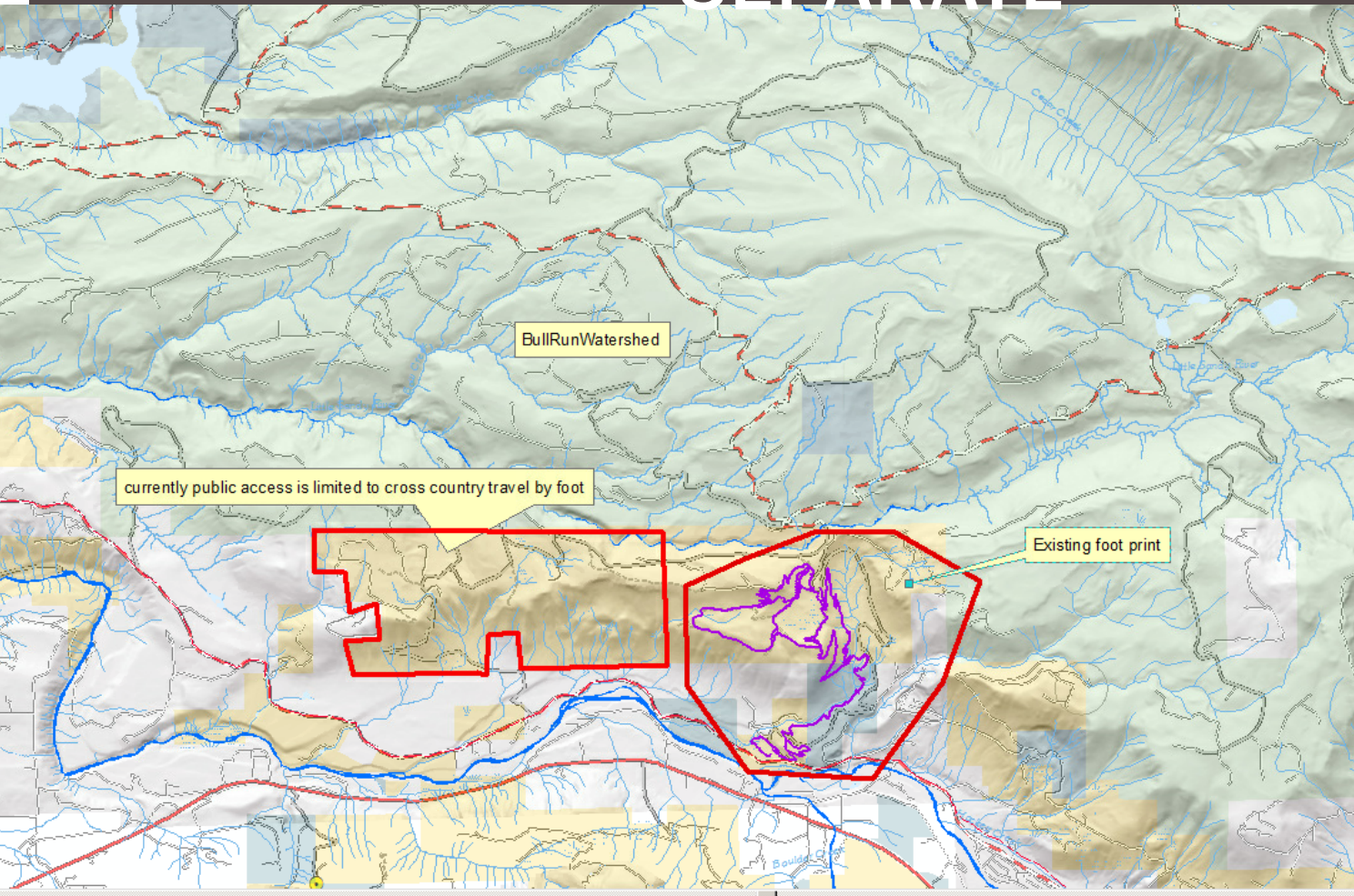
UPDATED MANAGEMENT PLANS



- **Recreation Management Area Designation.**
- **Allowable Use Decisions**
- **Recreation Management Zone Establishment.**
- **Setting the stage for updated Trail Plan**



SEPARATE



WILDLIFE MANAGEMENT

MOVING FORWARD



WILDLIFE MOVING FORWARD

- Site visits with ODFW biologist to discuss trail alignment and other potential issues.
- Work at keeping new trails within the existing footprint.
- Possibility of seasonal restrictions in selected areas.
- Discourage dogs to be on trail.



DOI ORDER NO. 3347, MARCH 2017



THE SECRETARY OF THE INTERIOR
WASHINGTON

ORDER NO. 3347

Subject: Conservation Stewardship and Outdoor Recreation.

Sec. 1 Purpose. The Department of the Interior (Department) is entrusted with overseeing Federal lands for the benefit of current and future generations. This includes advancing conservation stewardship and increasing outdoor recreation opportunities, including hunting and fishing, for all Americans. The purpose of this Order is to enhance conservation stewardship, increase outdoor recreation, and improve the management of game species and their habitat.

ORDER NO. 3362, 2018

- Department will work with our State partners and others to conserve and/or improve priority western big-game winter range and migration corridors in sagebrush ecosystems and in other ecotypes as necessary.
- Through scientific endeavors and land management actions, wildlife such as Rocky Mountain Elk (elk), Mule Deer (deer), Pronghorn Antelope (pronghorn), and a host of other species will benefit.

Secretary Zinke Prioritizes Conservation & Big Game Migration Corridors

Signs Order Directing More Resources Toward Habitat Restoration, Conservation, Collaboration and Research



2/9/2018

Last edited 2/23/2018

RECREATION MANAGEMENT

MOVING FORWARD

