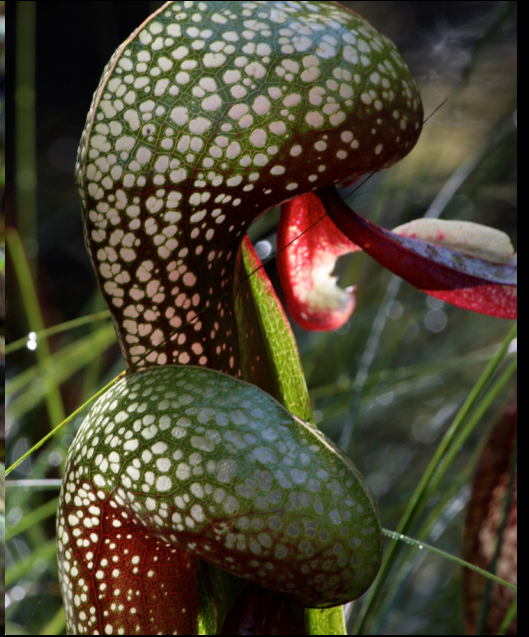




Forest Service  
U.S. DEPARTMENT OF AGRICULTURE

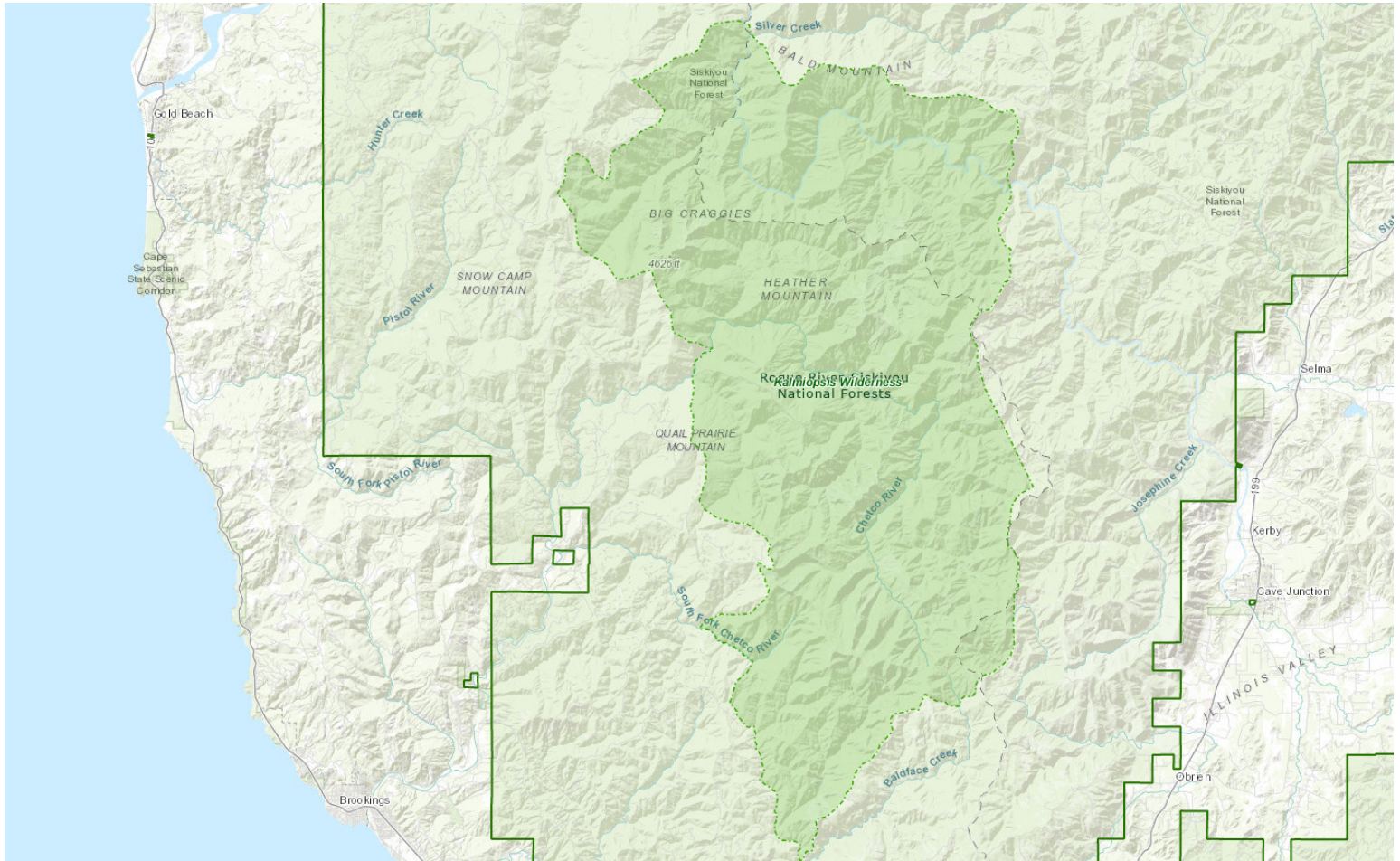
Pacific Northwest Region | Rogue River-Siskiyou National Forest



# Plants of the *Kalmiopsis* Wilderness



# Vicinity Map of the Kalmiopsis Wilderness



The Kalmiopsis Wilderness is located centrally in the Wild Rivers Ranger District and the Gold Beach Ranger District.

Visitors have several options for maps of the area available on the Rogue River-Siskiyou National Forest's website: [www.fs.usda.gov/r06/rogue-siskiyou/maps-guides](http://www.fs.usda.gov/r06/rogue-siskiyou/maps-guides)

## Cover photos, clockwise from top left:

*Lilium pardalinum* ssp. *vollmeri* blooms in June and July in the Kalmiopsis Wilderness. USDA Forest Service photo by Kailey Clarno.

*Kalmiopsis leachiana* is the namesake of the wilderness. It was first discovered and described by the fearless botanist Lilla Leach, who collected and catalogued many of the species documented in the wilderness. Photo courtesy of The Oregon Flora Project by Norm Jensen.

*Darlingtonia californica*, or cobra lilies, are carnivorous plants found in the rocky, serpentine soils of southern Oregon and northern California. USDA Forest Service photo by Chamise Kramer.

The Illinois River passes through portions of the Kalmiopsis Wilderness. Adobe Stock image by Jessica.

## Photos, opposite page:

Top: Lilla Leach is credited with cataloguing and describing many of the plant species in the Kalmiopsis Wilderness, including *Kalmiopsis leachiana*, for which the Wilderness Area is named. Here, Lilla Leach sits at Horsesign Butte, May 1931. Courtesy of The Leach Collection, University of Oregon Knight Library, Archives and Special Collections.

Bottom: Illustration of *Kalmiopsis leachiana* by Chamise Kramer. Used with permission from the artist.

# The Flora of the Kalmiopsis Wilderness

The Kalmiopsis Wilderness is legendary for its diversity of plant life! Much of this diversity results from plant species adapting to life in harsh soils derived from peridotite and serpentinite rocks. Both are rich in heavy metals such as magnesium, iron, chromium and nickel, which in high amounts can be toxic to most plants. The diversity of plant habitat has been the result of geologic forces (uplift, folding and faulting), erosional and depositional forces (glaciations, weather, climate and the action of rivers), and periodic fires. Within the Kalmiopsis Wilderness are portions of the Babyfoot Lake, York Creek, and Big Craiggies Botanical Areas.

## Plant Collecting in Wilderness Areas

You may always take photographs, make drawings, and take data collections of plants, but do not make collections of specimens in wilderness areas.

Collecting of plants or plant parts in Wilderness Areas is not allowed except by permit issued by the Forest Service for scientific or educational purposes.

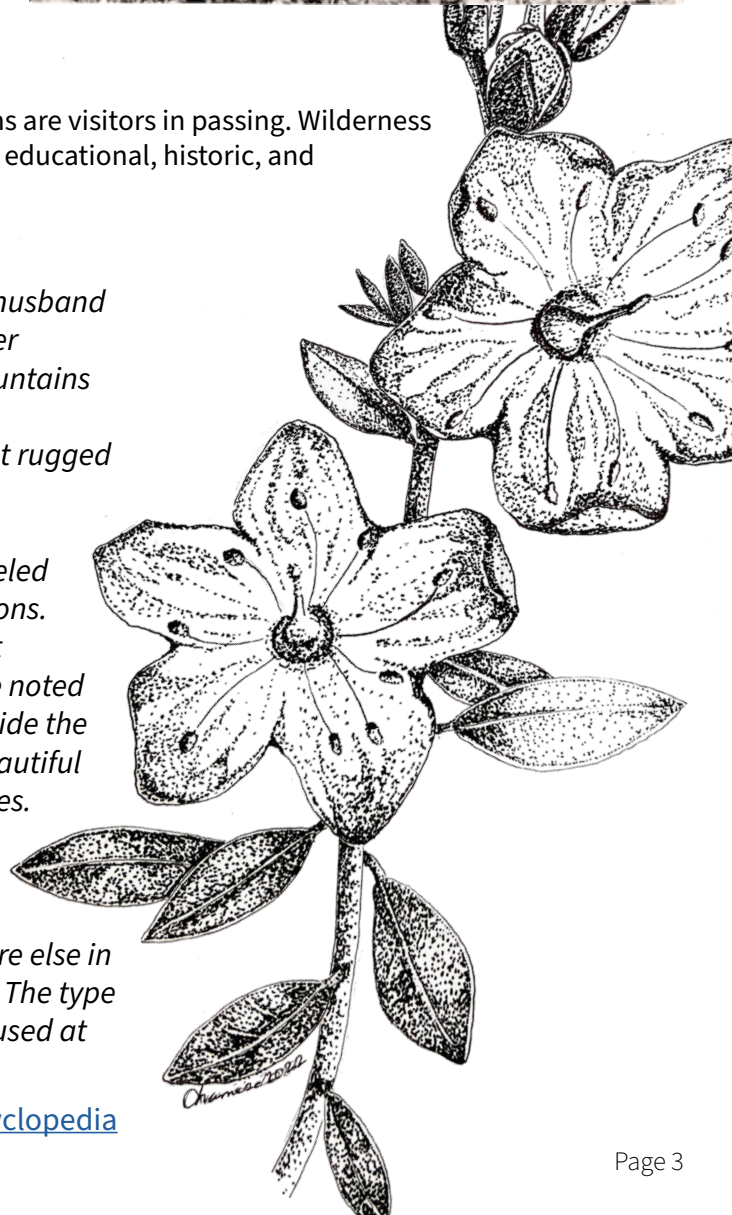
## What is Wilderness?

Wilderness is an area that is affected by forces of nature, where humans are visitors in passing. Wilderness Areas contain ecological, geographical and other features of scientific, educational, historic, and recreational value.

*Lilla Irvin Leach was an independent field botanist who, with her husband John, systematically collected plants throughout Oregon and other western states. She was particularly interested in the Siskiyou Mountains of Curry County in southwestern Oregon. She and John spent nine summers there between 1928 and 1938, exploring the heart of that rugged range where Lilla discovered several new species.*

*Lilla and John, with their burros Pansy and Violet, reportedly traveled more than 1,000 miles of primitive trails on their Siskiyou expeditions. It was there, on June 14, 1930, that Lilla made her most important discovery, a pink-flowered shrub in the Heath Family, never before noted by botanists. Lilla later wrote that when she spotted the plant beside the trail, she “dropped to my knees ... I had never seen anything so beautiful before.” She believed at once that she had discovered a new species.*

*Two years after its first collection, the plant was officially named *Kalmiopsis leachiana*, commemorating Lilla and John. The genus *Kalmiopsis* is endemic to southwestern Oregon and occurs nowhere else in the world; Oregon’s Kalmiopsis Wilderness is named for the plant. The type specimen (the collection first examined by Louis Henderson) is housed at the OSU Herbarium.*



From the [Oregon Encyclopedia](#)

The following Plant List is intended to be used as a beginning botanical checklist for your observations. It is certainly not complete, and we encourage you to report to the Forest Service your botanical observations, both common and rare, which have not been included on this list. Plants are listed alphabetically by scientific name to encourage you to become more familiar with the nomenclature. For assistance in plant identification, please refer to the list of suggested references.

Species in this list are listed as occurring in the following habitat types:

Habitat Abbreviations	
D	Dry/Rocky
R	Riparian/Moist
S	Serpentine
OW	Open Woods
F	Forest
M	Meadow



## Coniferous Tree Species

Scientific Name	Common Name	Habitat
<i>Abies concolor</i>	white fir	F
<i>Abies grandis</i>	grand fir	F
<i>Abies magnifica var. shastensis</i>	Shasta red fir	F
<i>Calocedrus decurrens</i>	incense cedar	F, OW
<i>Chamaecyparis lawsoniana</i>	Port Orford cedar	R, F, S
<i>Picea breweriana</i>	Brewer spruce	F
<i>Pinus attenuata</i>	knobcone pine	D, OW
<i>Pinus contorta</i>	lodgepole pine	F
<i>Pinus jeffreyi</i>	Jeffrey pine	S
<i>Pinus lambertiana</i>	sugar pine	F
<i>Pinus monticola</i>	western white pine	F
<i>Pinus ponderosa</i>	ponderosa pine	D, OW, F
<i>Pseudotsuga menziesii</i>	Douglas-fir	F
<i>Taxus brevifolia</i>	Pacific yew	R, F

## Hardwood Tree Species

Scientific Name	Common Name	Habitat	Blooming
<i>Acer circinatum</i>	vine maple	R	May-June
<i>Acer macrophyllum</i>	bigleaf maple	R, F	April-May
<i>Alnus rhombifolia</i>	white alder	R	January-April
<i>Alnus rubra</i>	red alder	R	March-April
<i>Alnus viridis ssp. sinuata</i>	thinleaf alder	R	April-June
<i>Arbutus menziesii</i>	Pacific madrone	OW, F	March-May
<i>Chrysolepis chrysophylla</i>	golden chinquapin	OW, F	April-June
<i>Cornus nuttallii</i>	Pacific dogwood	R, F	April-July
<i>Fraxinus latifolia</i>	Oregon ash	R	March-May
<i>Lithocarpus densiflorus</i>	tanoak	OW, F	June-October
<i>Quercus chrysolepis</i>	canyon live oak	D, OW, F	April-May
<i>Quercus garryana</i>	Oregon white oak	OW, F	April-June
<i>Quercus garryana var. breweri</i>	brewer oak	OW, F	April-June
<i>Quercus kelloggii</i>	California black oak	OW, F	April-May
<i>Umbellularia californica</i>	Oregon myrtlewood	R, OW, F	December-May

## Woody Shrubs

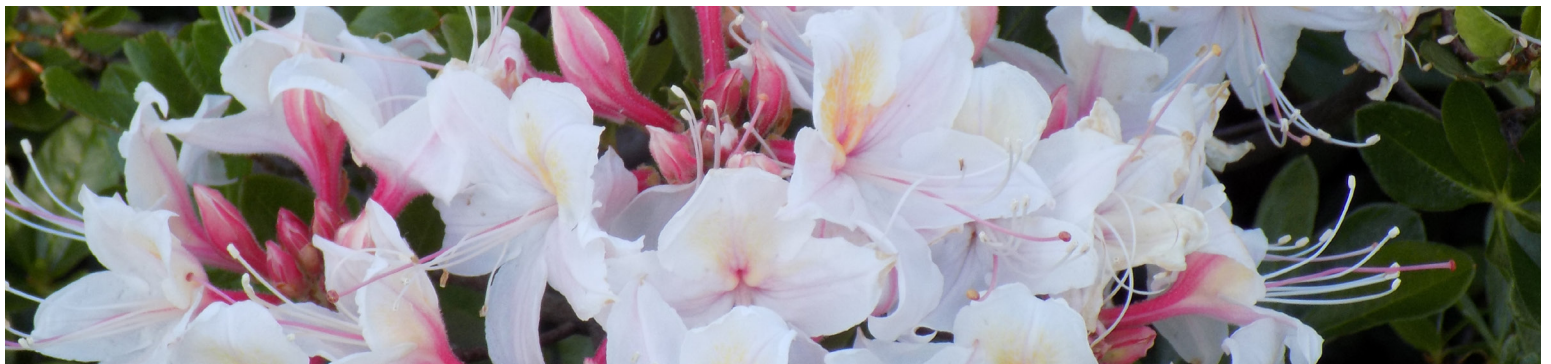
Scientific Name	Common Name	Habitat	Blooming
<i>Acer glabrum</i>	Rocky Mountain maple	R, F	April-May
<i>Amelanchier alnifolia</i>	western serviceberry	D	April-May
<i>Arctostaphylos x cinerea</i>	gray manzanita	D, OW	April-May
<i>Arctostaphylos columbiana</i>	hairy manzanita	D, OW, S	March-May
<i>Arctostaphylos hispidula</i>	Howell's manzanita	D, S	June-July
<i>Arctostaphylos nevadensis</i>	pine mat manzanita	D, S	June-July
<i>Arctostaphylos patula</i>	greenleaf manzanita	D	June-July
<i>Arctostaphylos uva-ursi</i>	kinnick-kinnick	D, OW, F	March
<i>Berberis nervosa</i>	dwarf Oregon grape	F	March-June
<i>Berberis piperiana</i>	tall Oregon grape	F	March-May
<i>Berberis pumila</i>	pygmy Oregon grape	F, D	March-May
<i>Ceanothus cordulatus</i>	white thorn	D	May-July
<i>Ceanothus cuneatus</i>	buckbrush	D	April-June
<i>Ceanothus integerrimus</i>	deerbrush	D	May-July

## Woody Shrubs (continued)

Scientific Name	Common Name	Habitat	Blooming
<i>Ceanothus prostratus</i>	prostrate Ceanothus	D, OW	May-July
<i>Ceanothus pumilus</i>	dwarf Ceanothus	D, S	April-May
<i>Ceanothus thyrsiflorus</i>	blue blossom	OW	April-June
<i>Ceanothus velutinus</i>	snowbrush	OW	Aprile-June
<i>Cercocarpus betuloides</i>	birchleaf mountain mahogany	D, OW	March-May
<i>Cornus canadensis</i>	bunchberry	F	Jay-July
<i>Corylus cornuta var californica</i>	California hazel	OW, F	January-March
<i>Crataegus douglasii</i>	Douglas' hawthorn	R, M, F	May-June
<i>Frangula californica ssp. occidentalis</i>	California coffeeberry	D, S	May-July
<i>Frangula purshiana</i>	cascara	R, F	April-June
<i>Garrya buxifolia</i>	box-leaf silk tassel	D, S	February-April
<i>Garrya elliptica</i>	wavy-leaf silk tassel	D	February-April
<i>Garrya fremontii</i>	bear brush	OW	February-April
<i>Gaultheria shallon</i>	salal	F	May-July
<i>Holodiscus discolor</i>	creambush oceanspray	D, OW, F	June-august
<i>Holodiscus microphyllus var. glabrescens</i>	dwarf oceanspray	D, OW	June-July
<i>Juniperus communis var. saxatilis</i>	common juniper	D, OW	N/A
<i>Kalmiopsis leachiana</i>	Kalmiopsis	D, S	April-June
<i>Leucothoe davisiae</i>	Sierra laurel	R, OW, S	June-August
<i>Lonicera hispidula</i>	hairy honeysuckle	R, OW	April-July
<i>Lonicera ciliosa</i>	orange honeysuckle	OW	May-June
<i>Lithocarpus densiflorus var. echinoides</i>	dwarf tanoak	OW, S	June-August
<i>Phyllodoce empetriformis</i>	red mountain heather	D	July-August
<i>Physocarpus capitatus</i>	Pacific ninebark	R, F	May-July
<i>Quercus sadleriana</i>	sadler oak	D, OW, S	April-June
<i>Quercus vaccinifolia</i>	huckleberry oak	D, S	May-June
<i>Rhododendron columbianum</i>	Pacific labrador tea	R, S	June-August
<i>Rhododendron macrophyllum</i>	Pacific rhododendron	F	April-July
<i>Rhododendron occidentale</i>	western azalea	R, F, S	April-August
<i>Ribes bracteosum</i>	stink current	R, OW	February-June
<i>Ribes lacustre</i>	prickly currant	R	June-July

## Woody Shrubs (continued)

Scientific Name	Common Name	Habitat	Blooming
<i>Ribes lobbii</i>	gummy gooseberry	D, OW	May-July
<i>Ribes roezlii</i>	Sierra gooseberry	D, OW	May-June
<i>Ribes roezlii</i> var. <i>cruentum</i>	shiny leaf gooseberry	OW	April-June
<i>Ribes sanguineum</i>	red flowering currant	OW	April-June
<i>Rosa gymnocarpa</i>	baldhip rose	OW	June-July
<i>Rubus leucodermis</i>	black cap raspberry	R, OW	April-July
<i>Rubus nivalis</i>	snow bramble	OW, F	June-August
<i>Rubus parviflorus</i>	thimbleberry	R, OW	April-August
<i>Rubus ursinus</i>	Pacific blackberry	R, OW	March-July
<i>Salix delnortensis</i>	Del Norte willow	R, S	March-July
<i>Salix scouleriana</i>	Souler's willow	R	April-May
<i>Salix sitchensis</i>	Sitka willow	R	April-June
<i>Salix</i> spp.	willow species	R	March-April
<i>Salix tracyi</i>	Tracy willow	R	April-May
<i>Smilax californica</i>	greenbrier	R, F	May-June
<i>Sorbus sitchensis</i>	mountain ash	R, F	May-June
<i>Symphoricarpos albus</i> var. <i>laevigatus</i>	common snowberry	R, OW	May-July
<i>Symphoricarpos mollis</i>	creeping snowberry	OW, F	April-June
<i>Toxicodendron diversilobum</i>	poison oak	OW	April-June
<i>Vaccinium membranaceum</i>	thin leaf huckleberry	OW, F	June-July
<i>Vaccinium myrtillus</i>	little leaf huckleberry	F	June-July
<i>Vaccinium ovatum</i>	evergreen huckleberry	OW	April-August
<i>Vaccinium parvifolium</i>	red huckleberry	OW, F, S	April-June
<i>Vaccinium scoparium</i>	grouse huckleberry	D, OW	May-August



*Rhododendron occidentale*. Photo courtesy of Siskiyou Mountain Club and Gabe Howe.

## Ferns and Fern Allies

Scientific Name	Common Name	Habitat
<i>Adiantum aleuticum</i>	maidenhair fern	R
<i>Aspidotis densa</i>	rock fern	S
<i>Athyrium filix-femina</i>	lady fern	F
<i>Blechnum spicant</i>	deer fern	R
<i>Botrychium multifidum</i>	grape fern	R
<i>Cheilanthes gracillima</i>	lace fern	D
<i>Cystopteris fragilis</i>	fragile fern	F,R
<i>Cryptogramma acrostichiodes</i>	rock brake fern	F
<i>Isoetes howellii</i>	Howell's quillwort	R
<i>Pentagramma triangularis</i>	goldback fern	F
<i>Polypodium glycyrrhiza</i>	licorice fern	F
<i>Polystichum munitum</i>	sword fern	F, R
<i>Polystichum imbricans</i>	rock sword fern	OW, F
<i>Pteridium aquilinum</i>	bracken fern	M, OW
<i>Woodwardia fimbriata</i>	giant chain fern	R

## Herbaceous Plants

Scientific Name	Common Name	Habitat	Blooming
<i>Achillea millefolium</i>	common yarrow	D, OW	April-October
<i>Achlys triphylla</i>	vanilla leaf	R, F	April-July
<i>Adenocaulon bicolor</i>	trail plant	F	June-September
<i>Agrostis humilis</i>	bent grass	R	July-August
<i>Allium bolanderi</i>	Bolander's onion	OW, S	May-July
<i>Allium falcifolium</i>	coast flat stem onion	D, S	June-July
<i>Allium siskiyouense</i>	Siskiyou onion	D	June-July
<i>Allium validum</i>	swamp onion	M	June-August
<i>Allotropa virgata</i>	sugar stick	OW, F	May-August
<i>Anemone deltoidea</i>	three-leaf anemone	R	March-June
<i>Anisocarpus madioides</i>	woodland tarwood	OW	May-September
<i>Antennaria suffrutescens</i>	shrubby everlasting	D, S	June-July
<i>Apocynum cannabinum</i>	common dogbane	D	June-August

## Herbaceous Plants (continued)

Scientific Name	Common Name	Habitat	Blooming
<i>Apocynum androsaemifolium</i> var. <i>pumilum</i>	mountain dogbane	D, OW	June-August
<i>Aquilegia formosa</i>	Sitka columbine	F	June-August
<i>Arabis aculeolata</i>	Waldo rockcress	D, S	April-June
<i>Arabis mcdonaldiana</i>	McDonald's rockcress	D, S	May-June
<i>Aralia californica</i>	elk clover	R	July-September
<i>Arnica cernua</i>	nodding Arnica	D, S	April-July
<i>Aruncus dioicus</i> var. <i>acuminatus</i>	goat's beard	R, F	May-July
<i>Asarum hartwegii</i>	marbled wild ginger	R, F	May-June
<i>Asclepias cordifolia</i>	purple milkweed	OW	May-July
<i>Boykinia occidentalis</i>	slender Boykinia	R, F	June-July
<i>Brodiaea elegans</i>	harveset Brodiaea	M, OW	April-July
<i>Calamagrostis koelerioides</i>	tufted pine grass	D	July-August
<i>Calochortus elegans</i>	elegant mariposa lily	OW	May-July
<i>Calochortus tolmiei</i>	pussy ears	D, M	April-July
<i>Calypso bulbosa</i>	fairy slippers	F	March-July
<i>Calyptridium umbellatum</i>	pussy paws	OW	May-August
<i>Calystegia occidentalis</i>	pale morning glory	D	April-July
<i>Campanula prenanthoides</i>	harebell	OW	June-August
<i>Cardamine nuttallii</i> var. <i>gemmata</i>	purple toothwort	D, S	April-May
<i>Carex amplifolia</i>	ample-leafed sedge	R	May-September
<i>Carex fracta</i>	fragile-leafed sedge	R, M, OW	May-September
<i>Carex interior</i>	inland sedge	R, M	July
<i>Carex mendocinensis</i>	Mendocino sedge	R, M, S	May-July
<i>Carex mertensii</i>	Merten's sedge	D, OW	July-August
<i>Carex obnupta</i>	slough sedge	R	June-September
<i>Carex rossii</i>	Ross' sedge	D, M, OW	May-August
<i>Carex scabriuscula</i>	Siskiyou sedge	D, M, S	June-July
<i>Castilleja brevilibata</i>	short-lobed paintbrush	D, S	May-July
<i>Castilleja miniata</i> ssp. <i>elata</i>	slender paintbrush	M, OW, S	May-August
<i>Castilleja miniata</i>	common paintbrush	M, R	May-September
<i>Centaurea cyanus</i>	bachelor's button	M, OW	May-August

## Herbaceous Plants (continued)

Scientific Name	Common Name	Habitat	Blooming
<i>Chamerion angustifolium</i>	red fireweed	OW, F	July-September
<i>Chimaphila menziesii</i>	little prince's pine	OW	June-August
<i>Clarkia purpurea</i>	winecup Clarkia	OW	April-June
<i>Claytonia sibirica</i>	Siberian candy flower	R	March-August
<i>Clintonia uniflora</i>	queen's cup	F	May-July
<i>Collinsia rattanii</i>	sticky blue-eyed Mary	OW	April-June
<i>Collomia tinctoria</i>	prickly Collomia	OW	June-July
<i>Corallorhiza maculata</i>	spotted coralroot	F	May-August
<i>Corallorhiza striata</i>	striped coralroot	F	April-August
<i>Cypripedium californicum</i>	California lady's slipper	R, OW, S	April-July
<i>Cypripedium fasciculatum</i>	clustered lady's slipper	R, F	April-July
<i>Darlingtonia californica</i>	California pitcher plant	R, S	April-June
<i>Darmera peltata</i>	umbrella plant	R	April-July
<i>Delphinium nuttallianum</i>	Sonne's larkspur	R, OW	June-July
<i>Dicentra formosa</i>	Pacific bleeding heart	D, S	April-June
<i>Dicentra formosa spp. oregana</i>	Oregon bleeding heart	D, S	April-June
<i>Dichelostemma congestum</i>	ookow/blue dicks	OW	April-June
<i>Dichelostemma multiflorum</i>	roundtooth ookow	M, OW	May-June
<i>Dodecatheon hendersonii</i>	shooting star	OW, F	February-May
<i>Drosera rotundifolia</i>	round-leaved sundew	R	July-August
<i>Epilobium foliosum</i>	leafy willow herb	D	April-August
<i>Epilobium minutum</i>	small flowered willow herb	D	April-August
<i>Epilobium rigidum</i>	rigid willow herb	D, S	July-August
<i>Epipactis gigantea</i>	stream orchid	R	April-August
<i>Erigeron cervinus</i>	deer fleabane	R, M	May-August
<i>Erigeron filifolius</i>	three-leaved daisy	D	May-August
<i>Eriodictyon californicum</i>	Yerba santa	D, OW	May-July
<i>Eriogonum nudum</i>	barestem buckwheat	D	June-November
<i>Eriogonum pendulum</i>	long-stalked buckwheat	D, OW, S	July-August
<i>Eriogonum ternatum</i>	Waldo buckwheat	D, S	June-August
<i>Eriophorum crinigerum</i>	fringed cottongrass	R	June-August
<i>Erythronium citrinum</i>	glacier lily	OW	March-April

## Herbaceous Plants (continued)

Scientific Name	Common Name	Habitat	Blooming
<i>Erythronium hendersonii</i>	Henderson's fawn lily	OW	April-May
<i>Erythronium oregonum</i>	giant fawn lily	OW	April-May
<i>Erythronium revolutum</i>	pink fawn lily	R, F	March-June
<i>Eschscholzia californica</i>	California poppy	M	March-August
<i>Eucephalus tomentellus</i>	rayless aster	D, S	July-October
<i>Festuca occidentalis</i>	western fescue	D	June-August
<i>Fragaria vesca ssp. bracteata</i>	woodland strawberry	M, OW	April-June
<i>Frasera speciosa</i>	giant Frasera	D, OW	July-August
<i>Fritillaria glauca</i>	Siskiyou Fritillaria	D, S	April-July
<i>Fritillaria recurva</i>	red bells	OW, F	March-July
<i>Galium ambiguum</i>	obscure bedstraw	D, OW, S	June-July
<i>Galium triflorum</i>	fragrant bedstraw	R, F	May-July
<i>Gentiana affinis</i>	pleated gentian	D, S	July-August
<i>Gentiana calycosa</i>	explorer's gentian	OW, S	July-September
<i>Gentiana setigera</i>	Waldo gentian	R, S	August-September
<i>Geranium oreganum</i>	Oregon geranium	M, OW	June-July
<i>Goodyera oblongifolia</i>	rattlesnake plantain	F	July-August
<i>Helenium bigelovii</i>	tall sneezeweed	M, R	June-August
<i>Hieracium bolanderi</i>	Bolander's hawkweed	D, OW, S	June-August
<i>Hieracium parryi</i>	Parry's hawkweed	OW	June-August
<i>Horkelia sericata</i>	silky Horkelia	D, S	May-July
<i>Hosackia crassifolius</i>	thick-leaved lotus	D	May-August
<i>Hosackia oblongifolia</i>	narrow-leaved lotus	R, OW	May-October
<i>Hosackia yollabolliensis</i>	Yolla Bolly trefoil	OW	June-August
<i>Hypericum anagalloides</i>	tinker's penny	R	June-August
<i>Hypericum perforatum</i>	Klamath weed	M	June-September
<i>Hypericum scouleri</i>	western St. John's Wort	R	June-August
<i>Iris bracteata</i>	Siskiyou iris	F	May-June
<i>Iris chrysophylla</i>	slender-tubed iris	F	May-June
<i>Iris innominata</i>	golden iris	F	May-June
<i>Juncus balticus</i>	mountain rush	R	July-November
<i>Juncus bufonius</i>	toad rush	R	April-September

## Herbaceous Plants (continued)

Scientific Name	Common Name	Habitat	Blooming
<i>Juncus covillei</i>	Coville's rush	R	June-July
<i>Juncus effusus</i>	common rush	R	May-October
<i>Juncus ensifolius</i>	dagger-leaved rush	R	July-August
<i>Juncus mertensianus</i>	Merten's rush	R	July-August
<i>Kopsiopsis strobilacea</i>	California ground cone	OW, F	May-July
<i>Lathyrus delnorticus</i>	Del Norte pea	F, S	June-July
<i>Lathyrus nevadensis</i>	Sierra Nevada pea	D	April-June
<i>Leucanthemum vulgare</i>	ox-eyed daisy	M, OW	June-August
<i>Lewisia cotyledon</i>	Siskiyou Lewisia	D, S	May July
<i>Lewisia oppositifolia</i>	opposite-leaved Lewisia	R, F	Mar-May
<i>Lilium bolanderi</i>	Howell's lily	D, S	JuneJuly
<i>Lilium columbianum</i>	tiger lily	R, OW, F	June-July
<i>Lilium humboldtii</i>	Humboldt's lily	D, OW	June-August
<i>Lilium pardalinum</i>	leopard lily	R, F	May-July
<i>Lilium rubescens</i>	lilac lily	OW, F	June-July
<i>Lilium pardalinum ssp. vollmeri</i>	Vollmer's lily	R, S	June-July
<i>Lilium washingtonianum</i>	Washington lily	D, OW	July-August
<i>Linanthus bicolor</i>	bicolored Linanthus	M, OW	March-June
<i>Linnaea borealis var. longiflora</i>	western twinflower	F	June-September
<i>Listera banksiana</i>	western twayblade	F	June-July
<i>Listera convallarioides</i>	broad-lipped twayblade	F	June-August
<i>Listera cordata</i>	heart-leaved twayblade	F	June
<i>Lithophragma parviflorum</i>	small flowered fringe cup	OW	May-June
<i>Lomatium engelmannii</i>	Englemann's biscuit root	D, S	June-August
<i>Lomatium hallii</i>	Hall's Lomatium	D	April-July
<i>Lomatium howellii</i>	Howell's biscuit root	D, S	May-June
<i>Lomatium macrocarpum</i>	large fruited Lomatium	D	April-June
<i>Lomatium martindalei</i>	Martindale's Lomatium	D	May-June
<i>Lomatium nudicaule</i>	pestle parsnip	D	April-June
<i>Lomatium triternatum</i>	Lewis' Lomatium	D, M	April-July
<i>Lomatium utriculatum</i>	common Lomatium	D, M	February-May
<i>Lotus corniculatus</i>	bird's foot trefoil	D	June-September

## Herbaceous Plants (continued)

Scientific Name	Common Name	Habitat	Blooming
<i>Lupinus albifrons</i>	white-leafed lupine	D	March-June
<i>Lupinus bicolor</i>	bi-colored lupine	D, M	March-June
<i>Lupinus tracyi</i>	Tracy's lupine	D, OW	July
<i>Luzula comosa</i>	common wood rush	M, OW	May-August
<i>Maianthemum racemosum</i>	false Solomon's seal	F	April-July
<i>Melilotus albus</i>	white sweet clover	M, OW	May-September
<i>Mentha pulegium</i>	pennyroyal	R, M	June-September
<i>Mentzelia lindleyi</i>	Lindley's blazing star	D	April-June
<i>Microseris laciniata ssp. siskiyouensis</i>	cutleaf silverpuffs	D, S	April-July
<i>Mimulus alsinoides</i>	chickweed monkey flower	R	March-May
<i>Mimulus cardinalis</i>	scarlet monkey flower	R	April-October
<i>Mimulus guttatus</i>	seep spring monkey flower	R	March-August
<i>Mimulus moschatus</i>	musk flower	R	June-August
<i>Minuartia howellii</i>	Howell's sandwort	D, S	April-June
<i>Minuartia nuttallii</i>	Nuttall's sandwort	S, OW	April-June
<i>Mitella breweri</i>	Brewer's sandwort	R	April-August
<i>Mitella ovalis</i>	oval-leafed mitrewort	R	April-May
<i>Monardella odoratissima</i>	coyote mint	R, OW, F	June-August
<i>Monardella purpurea</i>	Siskiyou monardella	D, OW, S	June-September
<i>Montia parvifolia</i>	miner's lettuce	F	May-July
<i>Orobanche uniflora</i>	one-flowered broomrape	F, OW	May-August
<i>Orthilia secunda</i>	one-sided wintergreen	F	June-August
<i>Oxalis oregana</i>	Oregon Oxalis	F	April-September
<i>Packera cana</i>	wooly groundsel	M, OW	May-August
<i>Packera hesperia</i>	Siskiyou butterweed	S	April-June
<i>Parnassia palustris</i>	marsh grass of Parnassus	M, R	August-September
<i>Penstemon anguineus</i>	tongue-leaf Penstemon	OW	June-August
<i>Penstemon davidsonii</i>	Davidson's Penstemon	OW	July-August
<i>Penstemon newberryi var. berryi</i>	Newberry's Penstemon	D	July-August
<i>Penstemon parvulus</i>	small azure Penstemon	D	June-August
<i>Penstemon rupicola</i>	rock Penstemon	D, OW	June-August
<i>Silene grayi</i>	Gray's campion	D	July-August

## Herbaceous Plants (continued)

Scientific Name	Common Name	FHabitat	Blooming
<i>Sophora leachiana</i>	western Sophora	M, R	April-June
<i>Stenanthium occidentale</i>	western Stenanthium	R	May-July
<i>Streptanthus howellii</i>	Howell's Streptanthus	D, S	July-August
<i>Streptanthus tortuosus</i>	mountain Streptanthus	D, OW	April-September
<i>Streptopus amplexifolius</i> var. <i>americanus</i>	twisted stalk	F	April-June
<i>Symphyotrichum campestre</i>	western meadow aster	D, S	July-October
<i>Synthyris cordata</i>	snow queen	F	February-April
<i>Tauschia howellii</i>	Howell's Tauschia	OW, F	June-August
<i>Thermopsis macrophylla</i>	false lupine	F, OW	April-June
<i>Triantha occidentalis</i> ssp. <i>occidentalis</i>	western false asphodel	R, S	July-August
<i>Toxicoscordion micranthum</i>	small-flowered death camas	M, S	May-July
<i>Trientalis latifolia</i>	western starflower	OW, F	April-July
<i>Trillium ovatum</i>	white Trillium	F	March-June
<i>Triteleia bridgesii</i>	Bridges' brodiaea	OW	April-June
<i>Triteleia hyacinthina</i>	white brodiaea	OW, S	April-June
<i>Vancouveria chrysantha</i>	yellow inside-out flower	D, S	May-June
<i>Vancouveria hexandra</i>	inside-out flower	F	May-June
<i>Vancouveria planipetala</i>	redwood ivy	R	May-June
<i>Veratrum insolitum</i>	Siskiyou false hellebore	OW, F	June-July
<i>Verbascum blattaria</i>	moth mullein	D, OW	May-September
<i>Veronica americana</i>	American speedwell	R	May-August
<i>Vicia americana</i>	American vetch	OW	April-June
<i>Viola adunca</i>	western dog violet	R, M	March-July
<i>Viola cuneata</i>	wedgeleaf violet	D, OW, S	March-June
<i>Viola glabella</i>	smooth woodland violet	R, F	March-July
<i>Viola lobata</i>	lobed violet	D, OW, S	April-July
<i>Viola macloskeyi</i>	small white violet	R, M	May-August
<i>Viola orbiculata</i>	round-leaved violet	F	May-August
<i>Viola primulifolia</i> ssp. <i>occidentalis</i>	western bog violet	R, S	April-June
<i>Viola sempervirens</i>	evergreen violet	F	February-April

## Herbaceous Plants (continued)

Scientific Name	Common Name	Habitat	Blooming
<i>Whipplea modesta</i>	yerba desalva	F	April-June
<i>Xerophyllum tenax</i>	beargrass	M, OW, F	May-August



Left: *Castilleja miniata* ssp. *elata*. USDA Forest Service photo by Kailey Guerrant.

Right: *Fritillaria recurva*. USDA Forest Service photo by Chamise Kramer.

## Helpful Websites and Apps

- Oregon Flora ([oregonflora.org](http://oregonflora.org))
- iNaturalist ([www.inaturalist.org](http://www.inaturalist.org))
- PLANTS database ([plants.usda.gov](http://plants.usda.gov))

## References

- *Rare and Endangered Plants of Oregon*. Eastman. 1990. Beautiful American Publishing Company.
- *Rare Plants of Southwest Oregon*. Mullens, Showalter. 2007. BLM & USDA Forest Service.
- *The Jepson Manual: Higher Plants of California*. Hickman ed. 1993. University of California Press.
- *A Manual of Higher Plants of Oregon*. Peck. 1961. Binford and Mort.
- *Illustrated Flora of the Pacific States: Washington, Oregon, and California*. Volumes I-IV. Abrams. 1923. Stanford University Press.
- *Vascular Plants of the Pacific Northwest*. Hitchcock, Cronquist, Ownbey, Thompson. 1969. University of Washington Press.
- *Flora of the Pacific Northwest*. Hitchcock and Cronquist. 1973. University of Washington Press.
- *Threatened and Endangered Vascular Plants of Oregon: An Illustrated Guide*. Meinke. 1981. U.S. Fish and Wildlife Service.



*Lilium columbianum*. USDA Forest Service photo by Chamise Kramer.

Contact the Rogue River-Siskiyou National Forest with questions about the Kalmiopsis Wilderness Area:

**Supervisor's Office**

3040 Biddle Road  
Medford, Oregon 97520  
Phone: (541) 618-2200

**Wild Rivers Ranger District Office**

26568 Redwood Highway  
Cave Junction, OR 97523  
Phone: (541) 492-4000

**Grants Pass Interagency Office**

2164 NE Spaulding Avenue  
Grants Pass, OR 97525  
Phone: (541) 471-6500

**Gold Beach Ranger District Office**

29279 Ellensburg Avenue  
Gold Beach, Oregon 97444  
Phone: (541) 247-3600



@R6RRSNF



[www.fs.usda.gov/r06/rogue-siskiyou](http://www.fs.usda.gov/r06/rogue-siskiyou)