



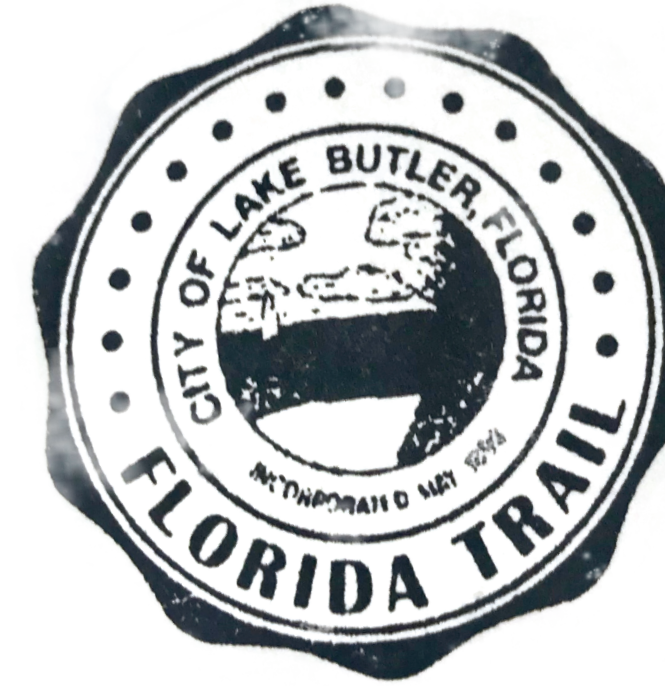
LAKE BUTLER

A FLORIDA TRAIL GATEWAY COMMUNITY

The Florida Trail passes through the city of Lake Butler, making it a great place for hikers to resupply or grab a bite to eat. The Gateway Community Program is designed to foster connections between Florida Trail hikers and the towns along the length of the Florida Trail. For more information on the Gateway Community Program and its designated towns, visit www.floridatrail.org/gatewaycommunities



Scan for Lake Butler recommendations



Collect your Lake Butler-Florida Trail Passport Stamp

For more information on the Florida Trail Passport Program, visit www.floridatrail.org/passport

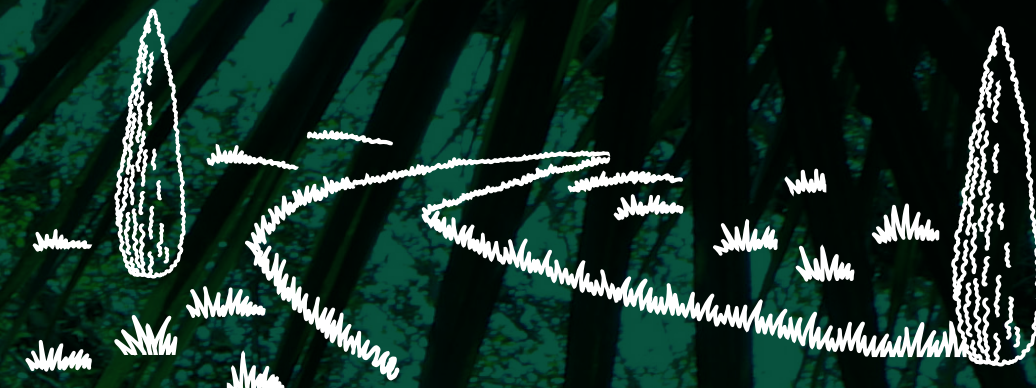
LAKE BUTLER AND THE FLORIDA TRAIL

This section of the Florida Trail shares its routing with the Palatka-Lake Butler State Trail, a 46.4-mile multi-use recreational trail. This portion of the Florida Trail is paved with little-to-no elevation gain, making it a relatively easy hike or bike.

LOCAL TRAIL INFO

TRAIL TYPE AND DIFFICULTY:

Paved surface, easy



BIKING, EQUESTRIAN, HIKING?:

Biking and hiking only



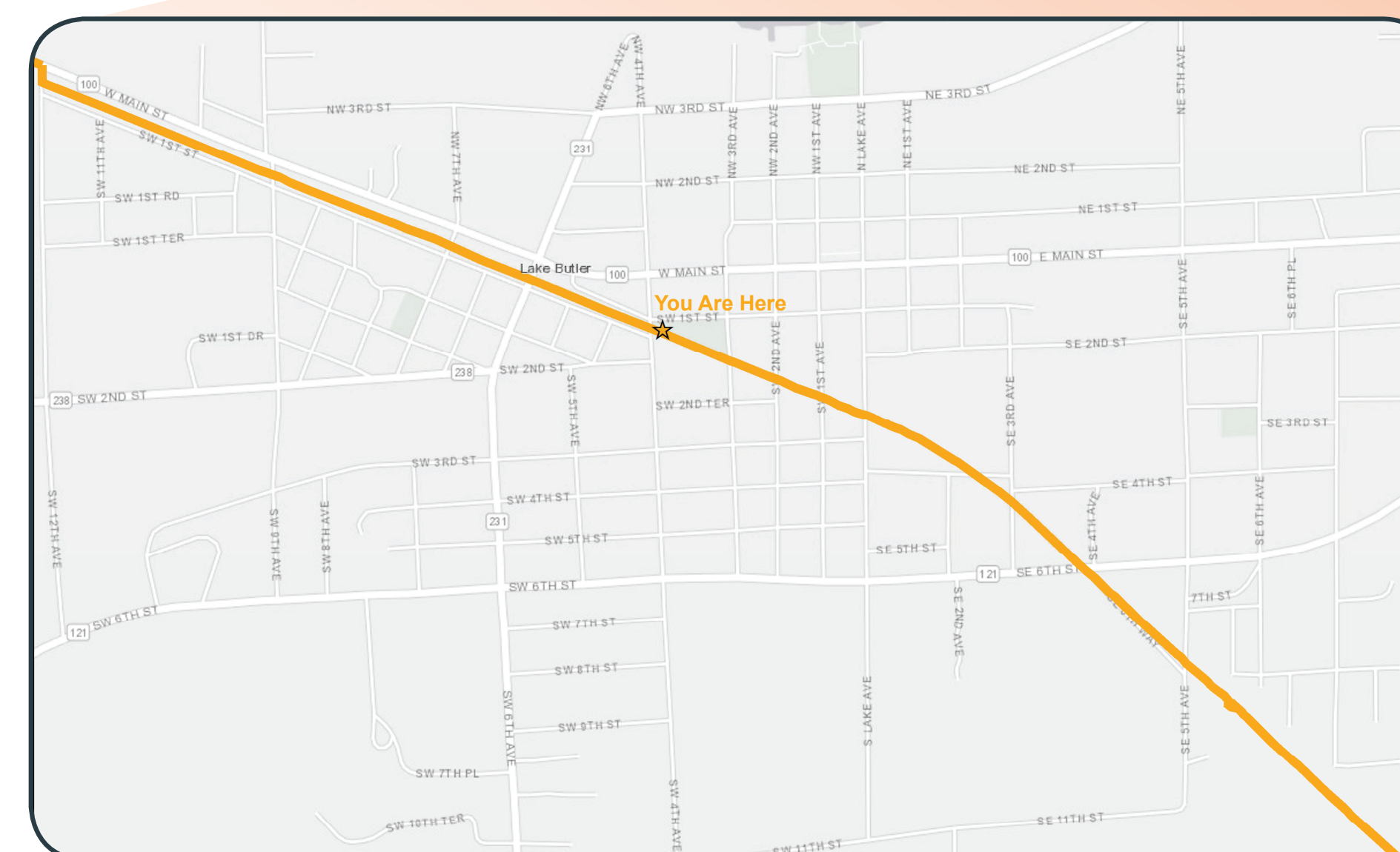
FLORA:

Cypress trees, hardwood hammocks, pine plantations, pine flatwoods, swamps



FAUNA:

Alligators, gopher tortoises, black bears, fox squirrels, deer, red-cockaded woodpecker



The Florida National Scenic Trail is a 1,400-mile hiking trail that is administered by the USDA Forest Service. It is a congressionally designated long-distance hiking trail and one of eleven National Scenic Trails in the United States. Thousands of painted orange swatches called blazes mark the Florida Trail, extending from the northern terminus at Gulf Islands National Seashore to the southern terminus at Big Cypress National Preserve in the Everglades. The Florida Trail showcases Florida's most scenic natural areas, history, culture, and provides a source of ecotourism to Florida visitors and residents.

You can learn more about the Florida Trail by visiting www.floridatrail.org or www.fs.usda.gov/fnst

