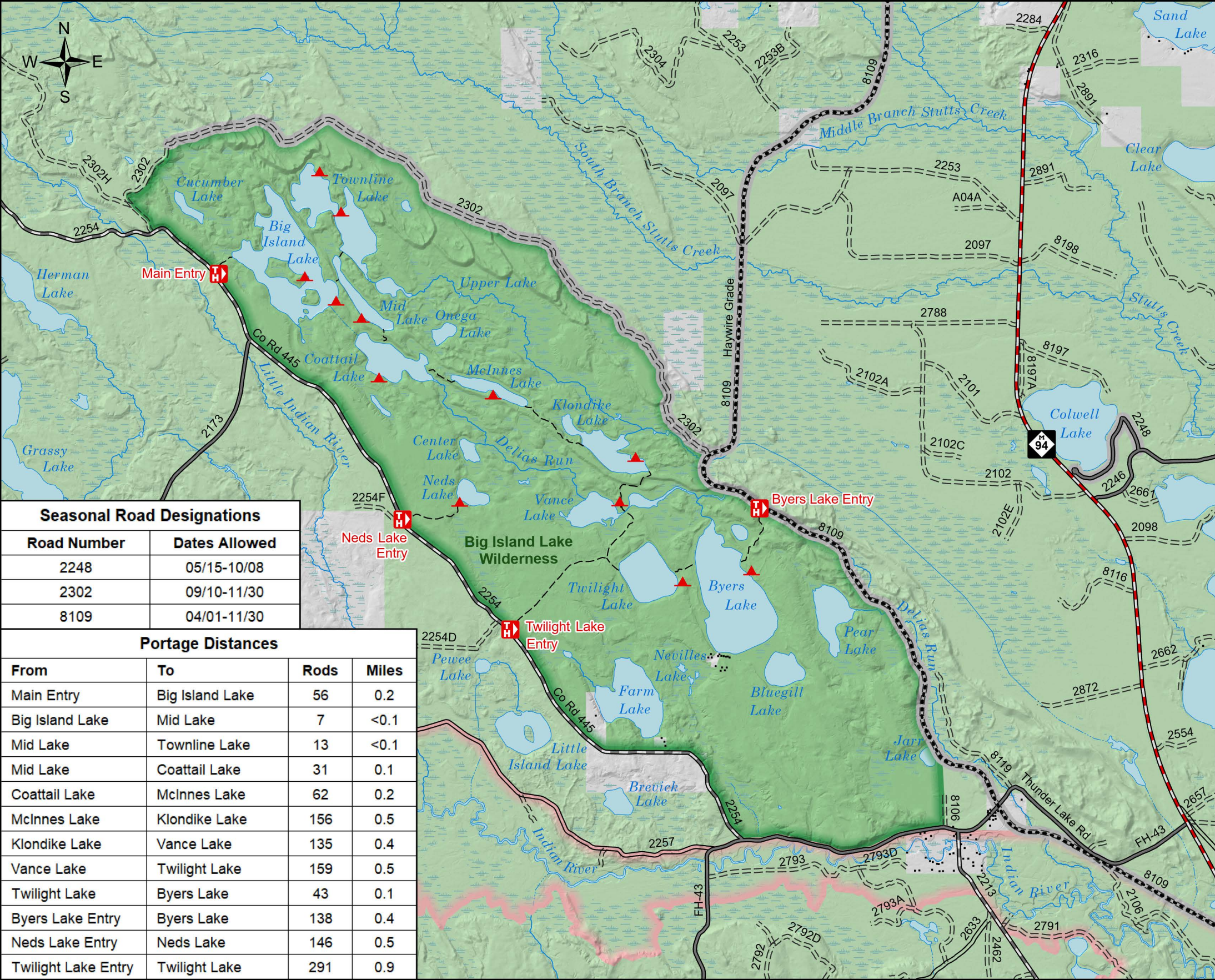




Big Island Lake Wilderness Special Regulations

- 1) Campfires are only permitted in the fire rings provided at designated sites.
- 2) Campers are encouraged to use designated campsites to reduce impacts.
- 3) Dispersed camping is not permitted within 200 feet of any shoreline or designated campsite.
- 4) Dispersed camping is not permitted within 100 feet of any trail or portage.
- 5) The maximum group size is 10 people (day use), and the maximum number of people per campsite is 6 people.
- 6) Saddle or pack animals are prohibited.
- 7) Glass containers are prohibited.
- 8) These regulations are in addition to the standard wilderness prohibitions on motorized equipment and mechanized transport. Prohibited equipment includes (but is not limited to) chainsaws, trolling motors, portage wheels, and bicycles.

- ▲ Designated Campsite (with fire ring and latrine)
- TH Trailhead
- Building/Structure
- Hiking Trail/Portage
- Haywire Grade ORV/Snowmobile Trail
- ===== Road - High Clearance Vehicles Only
- ===== Road - Suitable For Passenger Cars
- ===== Road - Moderate Degree Of User Comfort
- ===== Road - High Degree Of User Comfort
- Seasonal Road Closure (see table for allowed dates)
- State Highway
- Wild And Scenic River Boundary
- Wilderness Boundary
- Wilderness - Hiawatha National Forest Land
- Hiawatha National Forest Land
- Non-Forest Service Ownership
- Wetland



Seasonal Road Designations	
Road Number	Dates Allowed
2248	05/15-10/08
2302	09/10-11/30
8109	04/01-11/30

Portage Distances			
From	To	Rods	Miles
Main Entry	Big Island Lake	56	0.2
Big Island Lake	Mid Lake	7	<0.1
Mid Lake	Townline Lake	13	<0.1
Mid Lake	Coattail Lake	31	0.1
Coattail Lake	McInnes Lake	62	0.2
McInnes Lake	Klondike Lake	156	0.5
Klondike Lake	Vance Lake	135	0.4
Vance Lake	Twilight Lake	159	0.5
Twilight Lake	Byers Lake	43	0.1
Byers Lake Entry	Byers Lake	138	0.4
Neds Lake Entry	Neds Lake	146	0.5
Twilight Lake Entry	Twilight Lake	291	0.9