



## Auger Hole TR. NO. 025

Dixie National Forest, Escalante Ranger District

---

**General Description:** A trail through aspen, meadows, and mixed conifer and access to Auger Hole Lake. Longer trips can be made by combining trails West Fork Trail, Jubilee Trail, and the Great Western Trail.

**Mileage:** 3.4 miles

**Difficulty:** Foot: moderate

Bike: moderate

Horse: easy

OHV: not permitted, including E-Bikes

**Trailhead access:** Graded dirt road, 2 wheel drive

**Elevation loss / gain:** 1440 feet

**Water availability:** Water is available seasonally at Auger Hole. Bring your own water for day hikes. All water should be filtered or treated before drinking

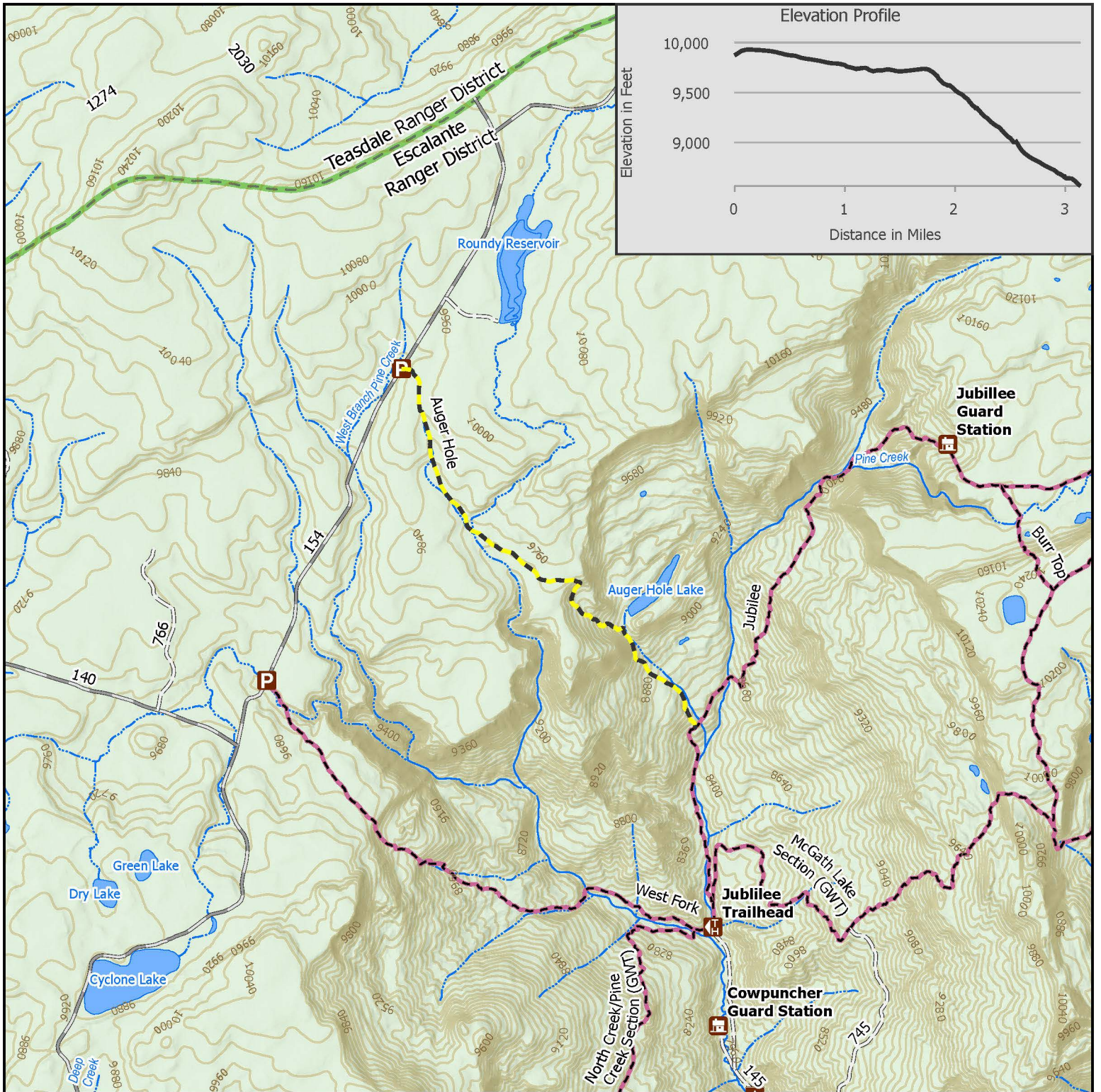
**Hazards / obstacles:** Sections of the trail can be difficult to follow. Look for cairns and blazes marking the trail. Mosquitoes are prevalent in spring and early summer. Wear a long sleeve shirt and pants and use insect repellent. Weather can change quickly. Be prepared for cold weather year round.

**Topo maps:** USGS 7.5 minute quads: Big Lake

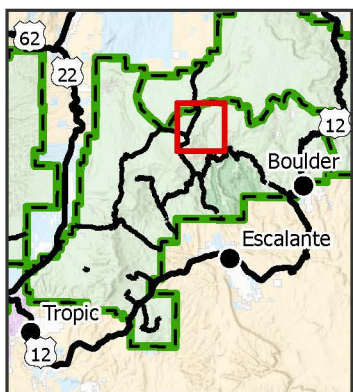
**The Trailhead:** You can park at either end of the trail. To access off of FR 154: From Escalante, turn north onto 300 E, the Pine Creek/Hells Backbone Road. At 0.7 miles the road will fork, stay right. After 3.5 miles the road will turn to dirt and is now called Forest Road 153 (FR153). At 13.6 miles the road will fork, continue straight at the junction, following signs to Posey Lake Campground. Continue past the campground. At 24.1 miles the Auger Hole Trailhead is on the right side of the road. Park in a pull-out along FR 154.

To access from Cowpuncher and Blue Spruce Campground: From Escalante turn north onto 300 E, the Pine Creek/Hells Backbone Road (300 E). At 0.7 miles the road will fork, stay right. After 3.5 miles the road will turn to gravel and is now called Forest Road 153 (FR 153). At 13.6 miles the road will fork, turn right following the sign to "Hells Backbone Bridge" (FR 153). At 18 miles turn left on FR 145 to Blue Spruce Campground. Drive approximately 2 miles (stay right at the signed junction) and park in the small parking area on the left.

**The Trail:** The Auger Hole Trail begins on FR 154 just south of Roundy Reservoir and runs southeast for 3.4 miles where it meets the Jubilee Trail. The trail begins by passing through a small thicket of trees. The trail then enters a meadow and follows it for approximately one mile. Follow the route by looking for cairns and blazes. The trail passes by Auger Hole Lake (seasonal) before descending steeply for about one mile. The trail ends at the Jubilee Trail junction. You can continue on the Jubilee Trail to its end at Pine Creek one mile beyond the junction.



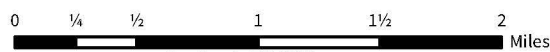
**Vicinity Map**



**Auger Hole**

Escalante Ranger District, Dixie National Forest

- |                  |                       |                     |
|------------------|-----------------------|---------------------|
| Parking          | Improved, Gravel      | Perennial Stream    |
| Campground       | Improved, Dirt        | Intermittent Stream |
| Guard Station    | Unimproved Road (4WD) | National Forest     |
| Trailhead        | Trail Non-Motorized   | Forest Boundary     |
| Auger Hole Trail |                       |                     |



Scale: 1:50,000



The USDA Forest Service makes no warranty, expressed or implied regarding the data displayed on this map, and reserves the right to correct, update, modify, or replace this information without notification.  
Date 1/31/2025