



## Beck Hollow TR. NO. 031

Dixie National Forest, Escalante Ranger District

---

**General Description:** A steep faint trail with scenic views of the Barney Top and Canaan Mountain. Only recommended for people with good route finding skills. Best done with a shuttle starting on the Hogs Ranch Trail No. 030 on FR 152 and ending on FR 149.

**Mileage:** 3.5 miles

**Difficulty:** Foot: Difficult  
Bike: Difficult  
Horse: Difficult  
OHV: Not Permitted, including E-bikes

**Trailhead access:** Graded gravel road

**Elevation loss / gain:** 1160 feet

**Water availability:** None

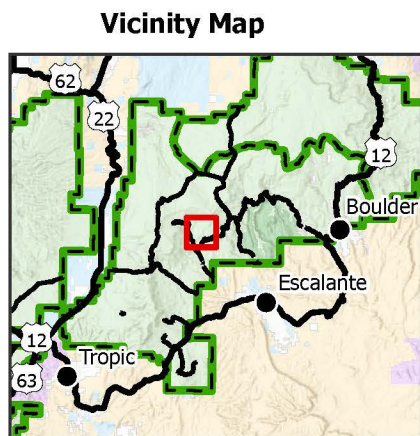
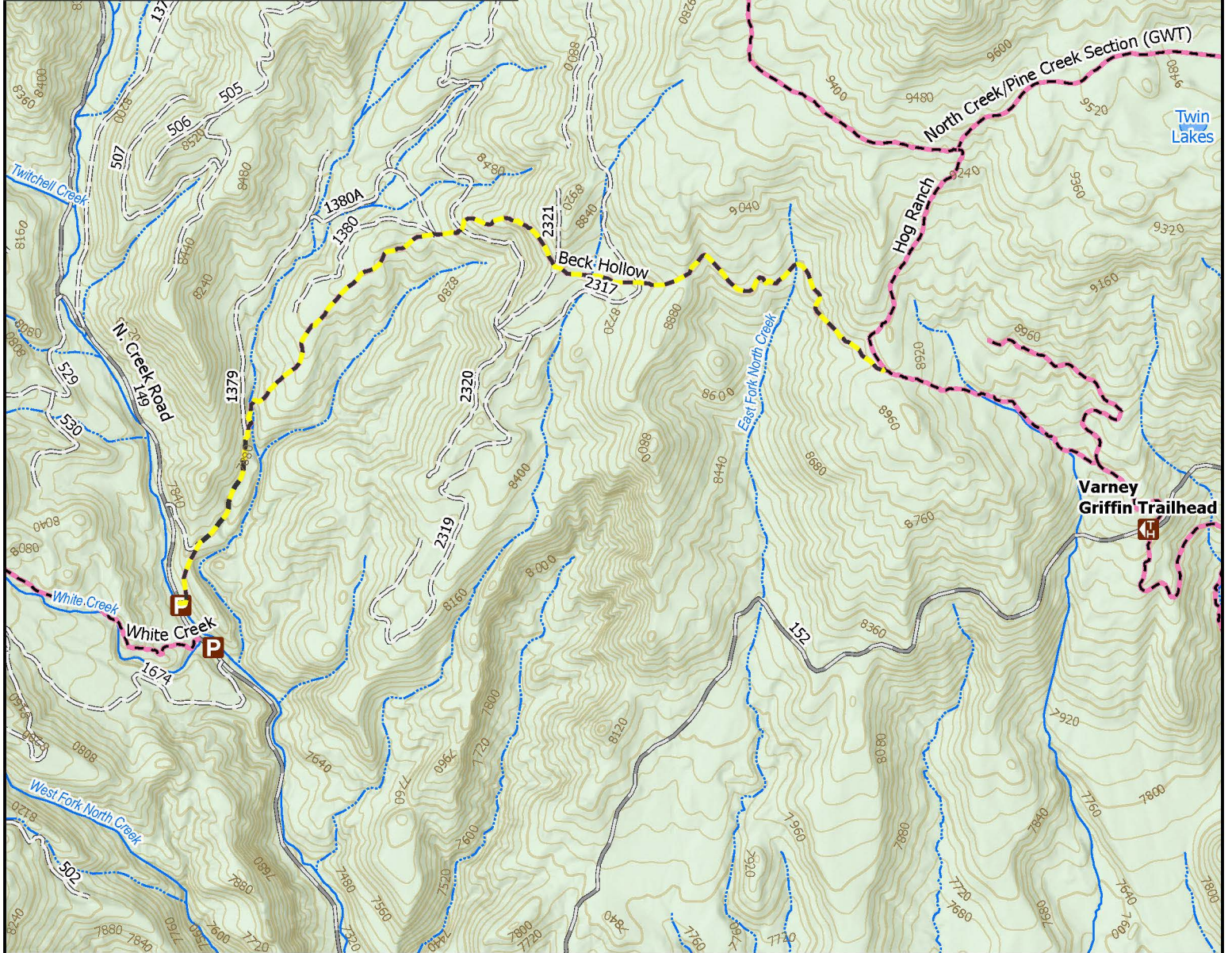
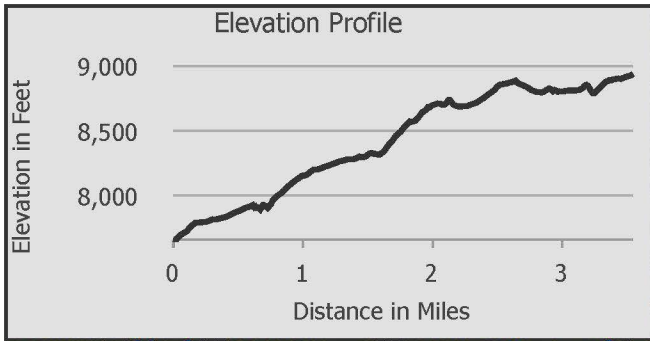
**Hazards / obstacles:** Sections of the trail are difficult to follow. Look for cairns and blazes marking the trail. Weather can change quickly. Be prepared for cold weather year round. Ridges, saddles, view points and open meadows are dangerous during thunderstorms.

**Topo maps:** USGS 7.5 minute quads: Barker Reservoir, Posy Lake

**The Trailhead:** To access from the Hog's Ranch Trail on FR 152: From Escalante drive west on Hwy 12. Turn right on the dirt road between milepost 55 and 56 and cross the Escalante River. After a short distance, make a right on the road signed "Barker CG." This is forest road 149 (FR 149). Continue of FR 149 for 9.1 miles. Turn right on FR 152. The trailhead is 4.5 miles beyond this junction on the left (north) side of the road.

To access from FR 149: From Escalante, travel west on Hwy 12 for five miles to the Main Canyon Road (FH 17) turnoff. After a short distance, make a right on the road signed "Barker CG." This is forest road 149 (FR 149). Continue of FR 149 for 11 miles to the Beck Hollow trailhead parking area on the east side of the road.

**The Trail:** From the Hogs Ranch Trailhead take the old road for 0.40 miles. Keep an eye out for where the trail leaves the road to the left. The trail descends a short distance then begins to climb up a boulder strewn hillside. At 0.80 miles you will come into an open area. Look for rock cairns to guide you through the meadow. Pass under the lone pine tree then continue following rock cairns. An old trail leaves the meadow to the right, this is not the trail. Look to the left, strait up the meadow, and you will see rock cairns and a large blaze at the far end of the meadow. This is the trail. At 1.20 miles continue strait across the road at the junction of the Beck Hollow Trail. The first part of the Beck Hollow Trail is easy to follow and there are nice views to the south. At 2.32 miles the trail crosses a road and cuts across an open meadow. At 2.6 miles the trail crosses the second road and becomes faint to non-existent and requires following old and sometimes hard to see blazes on trees. Be sure to keep track of your location on the map. The trail crosses several roads and stays on the ridge until it reaches the creek bottom at 3.95 miles. After climbing out of the creek the trail follows the road for 0.38 miles the turns left off of the road and descends to the Beck Hollow Trailhead on FR 149.



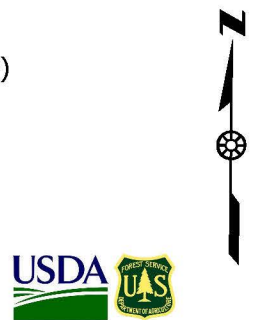
## Beck Hollow

Escalante Ranger District, Dixie National Forest

- Parking
- Trailhead
- Beck Hollow
- Trail Non-Motorized
- Improved, Gravel
- Unimproved Road (4WD)
- Perennial Stream
- Intermittent Stream
- National Forest
- Forest Boundary



Scale: 1:31,000



The USDA Forest Service makes no warranty, expressed or implied regarding the data displayed on this map, and reserves the right to correct, update, modify, or replace this information without notification.

Date : 1/31/2025