



Griffin Point TR. NO. 038

Dixie National Forest, Escalante Ranger District

General Description: The Griffin Point Trail circles around the base of Griffin Point and has many excellent views. It can be combined with several other trails in the area such as trails GWT -Barker Section 001.5, Griffin Spur 037, Halls Creek 039, and White Creek 040.

Mileage: 9.5 miles one way

Difficulty: Foot: Moderate
Bike: Moderate
Horse: Moderate
OHV: Not permitted, including E-bikes

Trailhead access: Graded dirt road

Elevation loss / gain: 2200 ft

Water availability: Water is available at Dougherty Reservoir and other nearby lakes. The trail crosses over some small streams. Bring your own water for day hikes. All water should be filtered or treated before drinking.

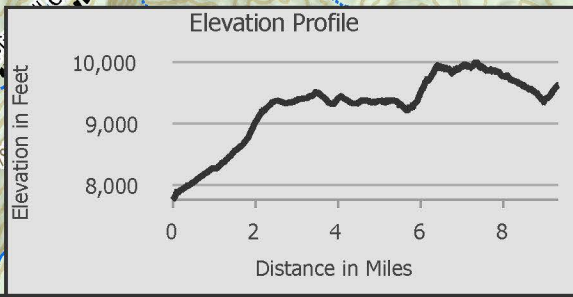
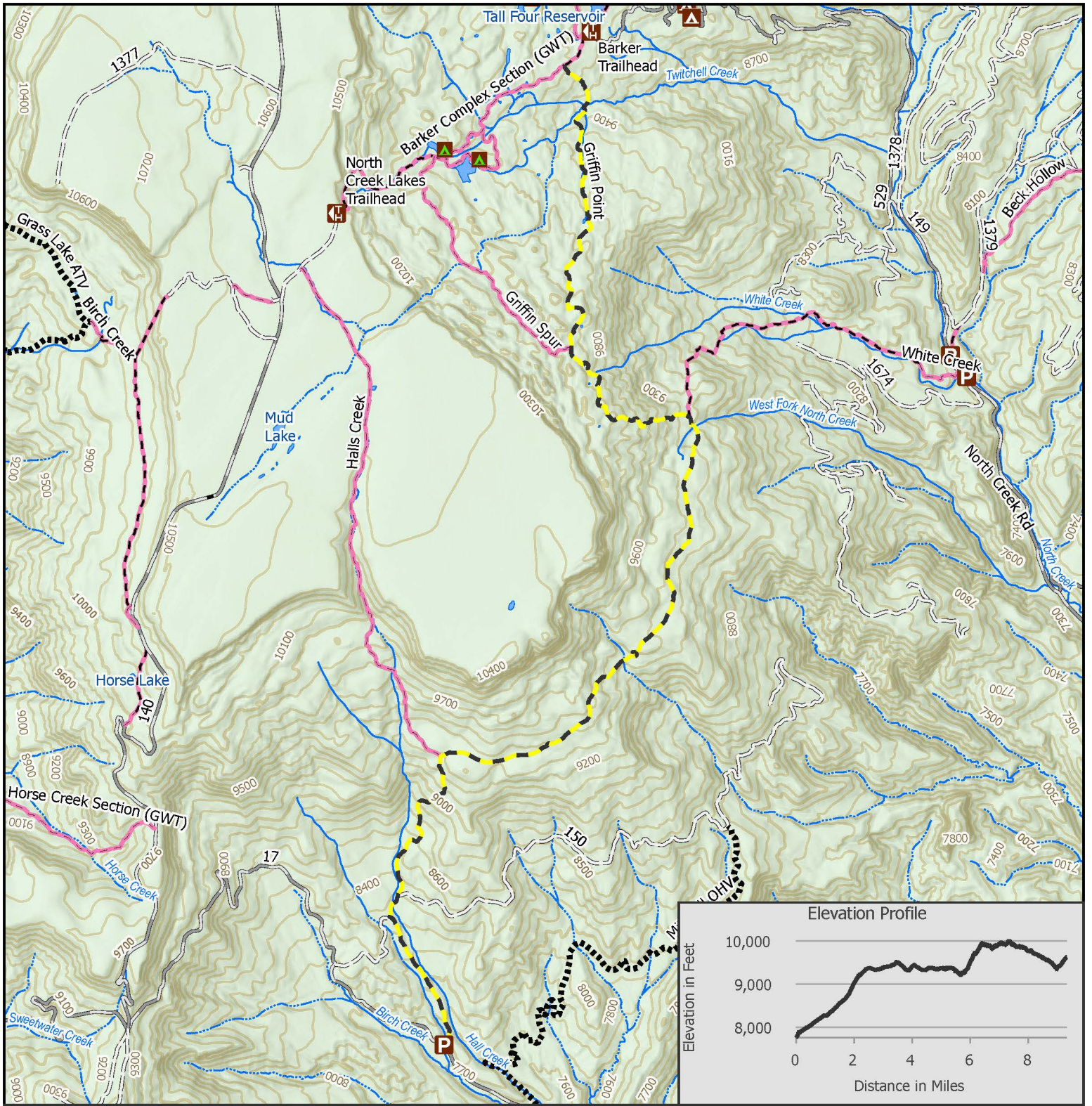
Hazards / obstacles: Sections of the trail through the meadows and pine forests can be difficult to follow. Keep an eye out for cairns and blazes.

Topo maps: USGS 7.5 minute quads:

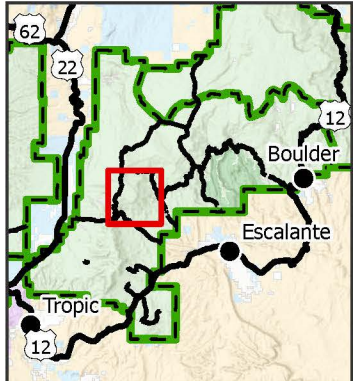
The Trailhead: North Trailhead: From Escalante drive west on Hwy 12. Turn right on the dirt road between milepost 55 and 56 and cross the creek. Turn left on Main Canyon Road. After a short distance, make a right on the road signed "Barker CG." This is forest road 149 (FR 149). Continue of FR 149 for 16.5 miles to the Upper Barker Reservoir parking area where the road dead ends.

South Trailhead: From Escalante drive west on Hwy 12. Turn right on the dirt road between milepost 55 and 56 and cross the creek. Turn left on Main Canyon Road. Drive 10.7 miles to the trailhead on the right side of the road.

The Trail: The trail is described from north to south. The trail begins on the east side of the Upper Barker Reservoir parking lot. After passing through a fence, the trail comes to a junction. Stay straight. At .31 miles turn left at the signed junction for the Griffin Point Trail. The trail is faint at first through the meadow, look for blazes on the trees to follow the trail. At .70 miles the trail will cross the drainage, and the trail will be more obvious once you head into the trees. The trail climbs steadily to the junction of the Griffin Spur Trail number 037 at 2.20 miles. Continue straight on the Griffin Point Trail. Soon the trail will descend steeply until the junction of the White Creek trail number 040. Turn right and continue following the Griffin Point Trail. The trail undulates and there will be nice views of Griffin Point off and on for the next 3 miles. At 5 miles the trail passes through a gate. At 6.40 miles you will reach the junction of the Halls Creek Trail # 039. Turn left, following an old 2 track road the rest of the way. At 6.50 miles a road leaves to the left, stay right. At 7 miles the trail reaches FR 150 and follows the road to the right (west) for .14 miles then turns left (south) down a road marked with a rock cairn and blaze. The trail descends for another mile where it terminates at FH 17 at 9.5 miles.



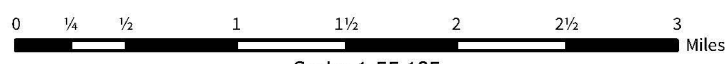
Vicinity Map



Griffin Point

Escalante Ranger District, Dixie National Forest

- Parking
- Backcountry Campsites
- Campground
- Trailhead
- Griffin Point Trail
- Improved, Gravel
- Unimproved Road (4WD)
- Perennial Stream
- Intermittent Stream
- Trail Motorized
- Trail Non-Motorized
- National Forest
- Forest Boundary



The USDA Forest Service makes no warranty, expressed or implied regarding the data displayed on this map, and reserves the right to correct, update, modify, or replace this information without notification.

Date 2/4/2025