



Great Western Trail (GWT)

Griffin Top Section TR. NO. 001.4

Dixie National Forest, Escalante Ranger District

General Description: The Great Western Trail is a continuous trail system that extends from Canada to Mexico and crosses through Arizona, New Mexico, Utah, Wyoming, Montana, and Idaho. The trail is marked by the Great Western Trail symbol and has sections open to hikers, bikers, horseman, and Off Highway Vehicles (OHVs). Approximately 80 miles of the Great Western Trail traverses the Escalante Ranger District, utilizing existing trail systems.

Mileage: 5.6 miles one way

Difficulty: Foot: Moderate
Bike: Difficult
Horse: Moderate
OHV: Not Permitted, including E-bikes

Trailhead access: Graded dirt road

Elevation loss / gain: 840 feet

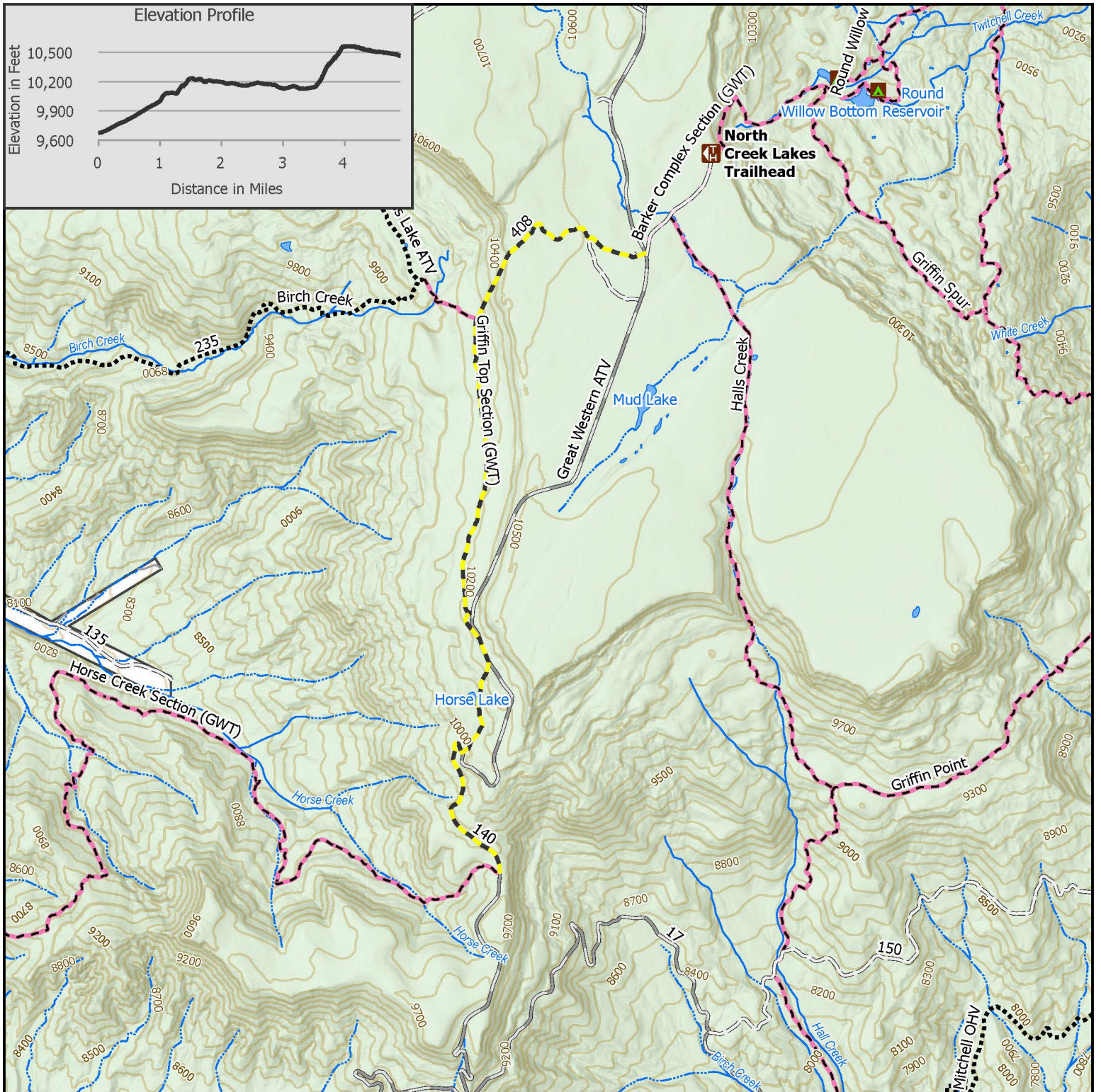
Water availability: Water may be available in Horse Lake but is not reliable. Bring your own water for day hikes. All water should be filtered or treated before drinking.

Hazards / obstacles: Sections of the trail through the meadows and forests can be difficult to follow. Keep an eye out for rock cairns and blazes. Mosquitoes can be prevalent in spring and early summer, wear a long sleeve shirt and pants and use insect repellent. Weather can change quickly. Be prepared for cold weather year-round. Ridges, saddles, viewpoints and open meadows are dangerous during thunderstorms

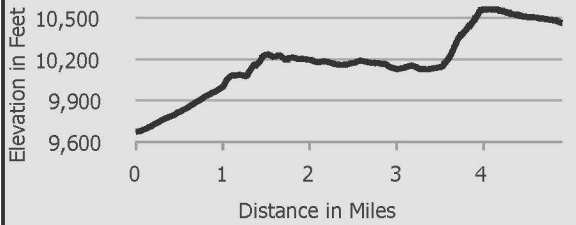
Topo maps: USGS 7.5 minute quads: Sweetwater Creek, Grass Lakes, Barker Reservoir

The Trailhead: From Escalante drive west on Hwy 12. Turn right on the dirt road between milepost 55 and 56 and cross the creek. Drive 14 miles to the Escalante Summit. Turn right on FR 140. Drive 15.6 miles to the jct. of the Horse Creek Section of the GWT and FR 140. To get to the north end of the trail continue 20 miles to the road signed "North Creek Lakes TRHD." The trail is on the left side of the road directly across from this sign.

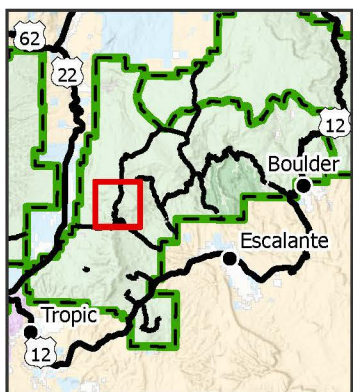
The Trail: Described from south to north. From the junction of the Horse Creek Section of the GWT and FR 140 the trail follows the road north for 0.8 miles. A sign on the left indicates where the trail leaves the road. The trail climbs gradually to Horse Lake then climbs steeply to the junction of FR 140 at 1.4 miles. Turn left on the road, follow the road for a short distance, and then turn left onto the trail again. The trail is fairly flat for the next 1.7 miles. At 3.4 miles the trail passes a sign and then climbs steeply to the rim. At 3.85 miles the trail passes through a gate. For the next mile the trail alternates between the road and trail. Be sure to look for blazes and cairns to make sure you stay on the trail. At 5.6 miles the trail ends at the junction of FR 140.



Elevation Profile



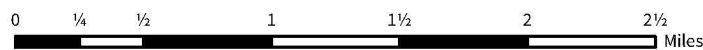
Vicinity Map



GWT: Griffin Top Section

Escalante Ranger District, Dixie National Forest

- Backcountry Campsites
- Trailhead
- GWT Griffin Top
- Improved, Gravel
- Trail Motorized
- Trail Non-Motorized
- Non-Forest Road
- Intermittent Stream
- National Forest
- Private
- Forest Boundary
- Unimproved Road (4WD)
- Perennial Stream



The USDA Forest Service makes no warranty, expressed or implied regarding the data displayed on this map, and reserves the right to correct, update, modify, or replace this information without notification.

Date 2/25/2025