



Pacer Lake ATV Trail TR. NO. 004

Dixie National Forest, Escalante Ranger District

General Description: A rocky ATV trail that accesses Pacer Lake from the Clayton Guard Station. One of several access points into the Pacer Lake, Grass Lakes, Poison Creek, and Antimony Creek area from the Griffin Top. Many loops can be made from this trailhead. See trails Poison Creek ATV Trail- 003, Blue Lake - 045, and Birch Creek ATV Trail - 047.

Mileage: 5.7 miles one way

Difficulty: Foot: Moderate
Bike: Difficult
Horse: Moderate
OHV: Moderate

Trailhead access: Graded gravel road

Elevation loss / gain: 10340-9160 1180 feet

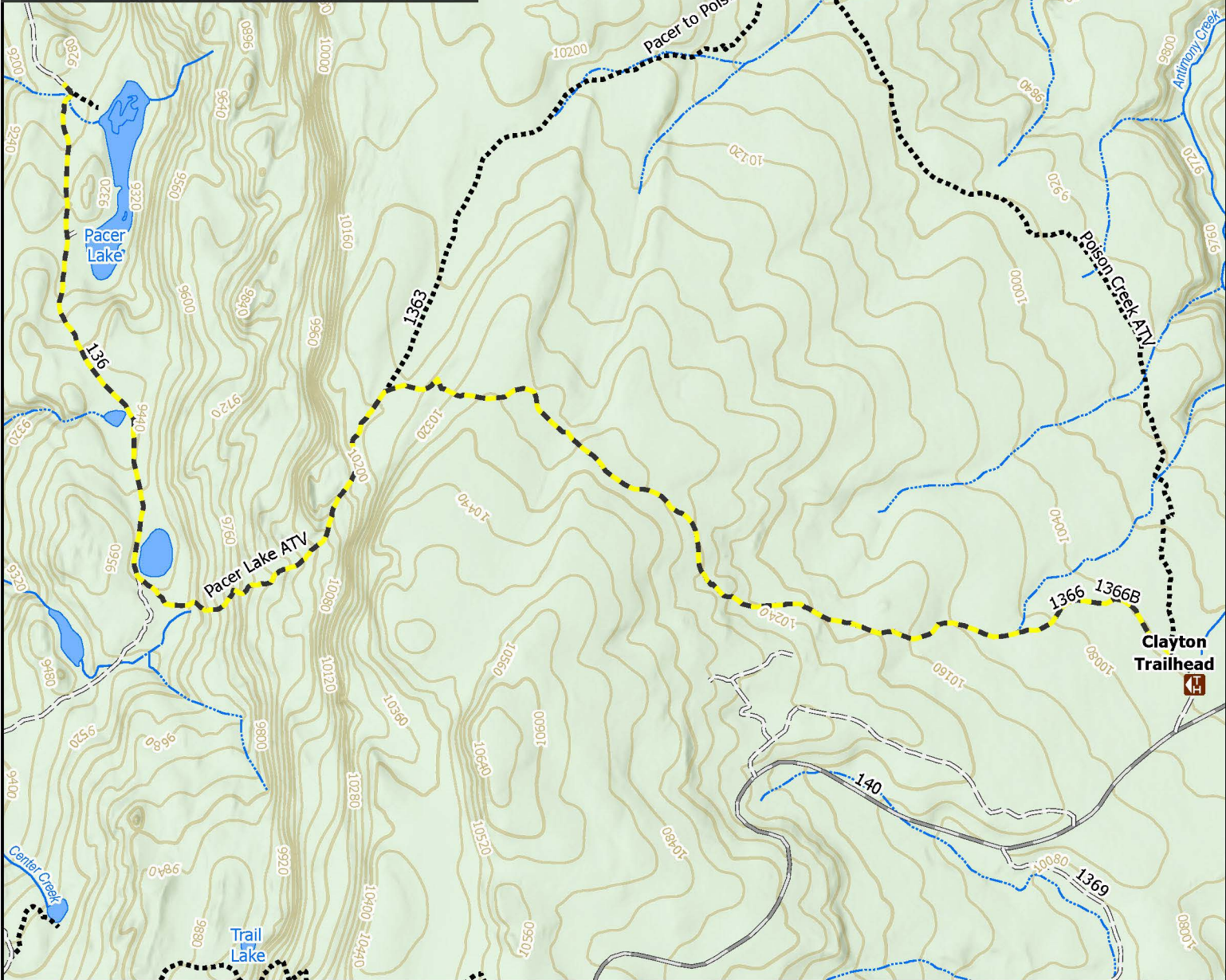
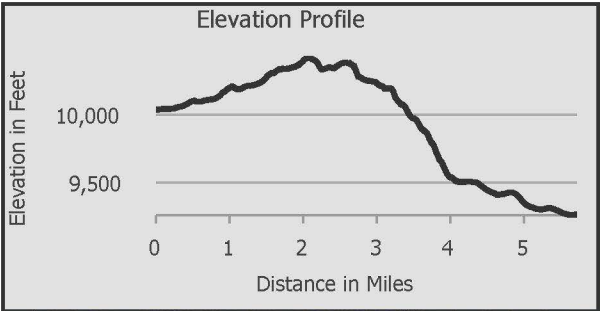
Water availability: Water is available at Pacer Lake and other nearby lakes and streams. Bring your own water for day hikes. All water should be filtered or treated before drinking.

Hazards / obstacles: Mosquitoes are prevalent in spring and early summer. Wear a long sleeve shirt and pants and use insect repellent. The weather can change quickly. Be prepared for cold weather year-round. Ridges, saddles, viewpoints and open meadows are dangerous during thunderstorms.

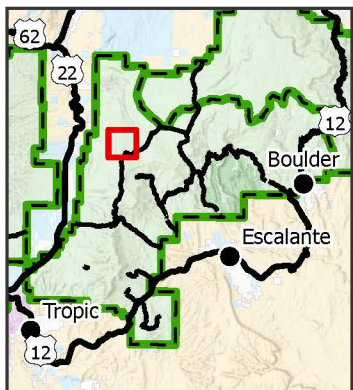
Topo maps: USGS 7.5 minute quads: Barker Reservoir, Grass Lakes

The Trailhead: From Escalante turn north on the Hells Backbone Road/Pine Creek Road (300 E). At 0.7 miles the road will fork, stay right. After 3.5 miles the road will turn to dirt and is now called Forest Road 153 (FR153). At 13.6 miles the road will fork, continue straight at the junction, following signs to Posey Lake Campground. Continue past the campground. At 21.6 miles turn left on FR 140. At 8.5 miles turn right at the sign that says Clayton Guard Station. After a short distance you will see the trailhead parking area on your left.

The Trail: The trail leaves the parking lot from the northwest corner. After about 200 feet the Poison Creek ATV Trail turns right, and the Pacer Lake ATV Trail continues straight. The trail passes several closed roads, be sure to look for rock cairns and trail markers. At about 2.9 miles the trail passes through a gate then steeply descends. At 4 miles the trail reaches Forest Road 136. To continue to Pacer Lake, turn right. After about 1 mile the southern end of the lake comes into view. To access the dam, continue north on FR 136 a little further until you see the road on the right that will take you up on the dam. There are several nice camping spots along the shore of Pacer Lake.



Vicinity Map



Pacer Lake ATV

Escalante Ranger District, Dixie National Forest

- Trailhead
- Pacer Lake ATV Trail
- Improved, Gravel
- Unimproved Road (4WD)
- Trail Motorized
- Perennial Stream
- Intermittent Stream
- National Forest
- Forest Boundary



Scale: 1:28,947



The USDA Forest Service makes no warranty, expressed or implied regarding the data displayed on this map, and reserves the right to correct, update, modify, or replace this information without notification.

Date 2/5/2025