

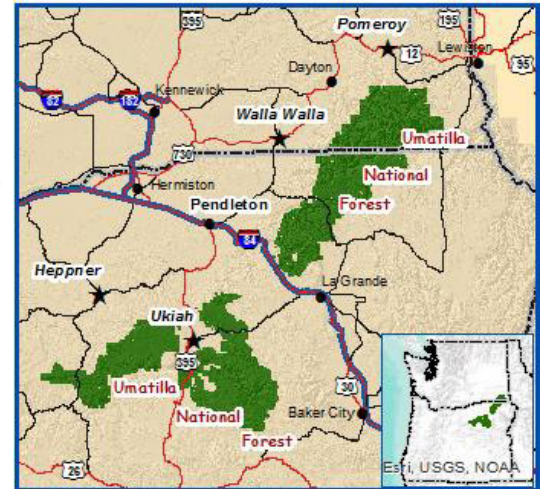
USDA Forest Service Pacific Northwest Region Outreach Notice Phase 1



Umatilla National Forest MULTIPLE Vacancy Announcements Application Period August 22nd to September 23rd, 2025

Phase 1 Permanent Fire Positions

The **Umatilla National Forest** will soon be filling multiple positions (listed in the table below), with duty locations of **Heppner, Oregon; Ukiah, Oregon; Walla Walla, Washington; and Pomeroy, Washington**. This notification is being circulated to inform interested applicants of upcoming opportunities. Please see the following information on the positions and the Umatilla National Forest. When applying to this announcement, please apply to the specific location(s) being offered and correct announcement number at <https://www.usajobs.gov/>.



*****APPLICATION PERIOD FOR THE FOLLOWING POSITIONS*****

The announcement period to apply for these positions is **August 22nd – September 23rd, 2025**. The table below provides more detailed information about each of these positions. Current vacancies within the Umatilla National Forest have been identified in this outreach; however, you are encouraged to review all positions and duty locations (either currently vacant or encumbered), and contact individuals listed for more information on any position you are interested in. This Fire Hire Event will utilize a **backfill process, thus a position currently encumbered which becomes vacant during this hiring event for any announcement listed in this outreach notice may immediately be filled through the fire hire process.**

Listed are the announcements the Umatilla National Forest plans to use to fill positions during PHASE 1 of Permanent Fire Hire. Please reach out to the contacts listed below if you are interested in one of these positions.

Duty Location: Heppner, Oregon

Vacancies	Position	Announcement Number	Contact
0	District Assistant Fire Management Officer (AFMO) – Operations GW-0462-8/9	26-FIRE-P1VA-DZAFMOM-89DH	Jeromy Wilson 541-676-2126 jeromy.wilson@usda.gov
0	Supervisory District Fuels AFMO GW-0456-8/9	26-FIRE-P1R146-DFLS-89DH	Jeromy Wilson 541-676-2126 jeromy.wilson@usda.gov

1	Forestry Technician (Fire/Fuels) - District Fuels Technician GW-0462-8	26-FIRE-P1R14610-FFUELS-8DH	Jon Ellis 541-676-2123 jonathan.ellis@usda.gov
1	Supervisory Fire Engine Operator (SFEO) GW-0456-7 8	26-FIRE-P1R14610-SFEOH-78DH	Shaun Mullins 541-676-2137 shaun.mullins@usda.gov
2	Fire Engine Operator (FEO) GW-0456-6 7	26-FIRE-P1R14610-FEOH-67DH	Shaun Mullins 541-676-2137 shaun.mullins@usda.gov
3	Lead Forestry Technician (AFEO) GW-0462-5 6	26-FIRE-P1R14610-AFEO-56DH	Shaun Mullins 541-676-2137 shaun.mullins@usda.gov
2	Forestry Technician - Engine Senior FFT GW-0456-4 5	26-FIRE-P1R146-ENGSTFF-45DH	Shaun Mullins 541-676-2137 shaun.mullins@usda.gov
1	Handcrew Supervisor (High Complexity) GW-0456-7 8	26-FIRE-P1VA-SHDCRW-78DH	Shaun Mullins 541-676-2137 shaun.mullins@usda.gov
1	Handcrew Asst. Supervisor (High Complexity) GW-0456-6 7	26-FIRE-P1VA-HCREWT2-67DH	Shaun Mullins 541-676-2137 shaun.mullins@usda.gov
2	Lead Forestry Technician (Hotshot/ Handcrew) GW-0462-5 6	26-FIRE-P1R14610-HCREW-56DH	Shaun Mullins 541-676-2137 shaun.mullins@usda.gov
2	Forestry Technician - Senior FFT - Hotshot/Handcrew GW-0456-4 5	26-FIRE-P1R14610-IHCRW-45DH	Shaun Mullins 541-676-2137 shaun.mullins@usda.gov
3	Wildland Forestry Aid – Region 6 GW-0456-3 4 FPL 5	26-FIRE-P1R610OCR-FFTR-34DH	Shaun Mullins 541-676-2137 shaun.mullins@usda.gov

Duty Location: Ukiah, Oregon

Vacancies	Position	Announcement Number	Contact
0	District Assistant Fire Management Officer (AFMO) – Operations GW-0462-8/9	26-FIRE-P1VA-DZAFMOM-89DH	Kevin Bomberger 541-427-5399 kevin.bomberger@usda.gov
0	Supervisory District Fuels AFMO GW-0456-8/9	26-FIRE-P1R146-DFLS-89DH	Kevin Bomberger 541-427-5399 kevin.bomberger@usda.gov
1	Forestry Technician (Fire/Fuels) - District Fuels Technician GW-0462-8	26-FIRE-P1R14610-FFUELS-8DH	Kip Turner 541-427-5398 kip.turner@usda.gov
0	Supervisory Fire Engine Operator (SFEO) GW-0456-7 8	26-FIRE-P1R14610-SFEOH-78DH	Charles Meyer 541-427-5397 charles.meyer2@usda.gov
2	Fire Engine Operator (FEO) GW-0456-6 7	26-FIRE-P1R14610-FEOH-67DH	Charles Meyer 541-427-5397 charles.meyer2@usda.gov
3	Lead Forestry Technician (AFEO) GW-0462-5 6	26-FIRE-P1R14610-AFEO-56DH	Charles Meyer 541-427-5397 charles.meyer2@usda.gov
3	Forestry Technician - Engine Senior FFT GW-0456-4 5	26-FIRE-P1R146-ENGSTFF-45DH	Charles Meyer 541-427-5397 charles.meyer2@usda.gov
1	Handcrew Supervisor (High Complexity) GW-0456-7 8	26-FIRE-P1VA-SHDCRW-78DH	Charles Meyer 541-427-5397 charles.meyer2@usda.gov
1	Handcrew Asst. Supervisor (High Complexity)	26-FIRE-P1VA-HCREWT2-67DH	Charles Meyer 541-427-5397

	GW-0456-6 7		charles.meyer2@usda.gov
3	Lead Forestry Technician (Hotshot/ Handcrew) GW-0462-5 6	26-FIRE-P1R14610-HCREW-56DH	Charles Meyer 541-427-5397 charles.meyer2@usda.gov
2	Forestry Technician - Senior FFT - Hotshot/Handcrew GW-0456-4 5	26-FIRE-P1R14610-IHCRW-45DH	Charles Meyer 541-427-5397 charles.meyer2@usda.gov
4	Wildland Forestry Aid – Region 6 GW-0456-3 4 FPL 5	26-FIRE-P1R610OCR-FFTR-34DH	Charles Meyer 541-427-5397 charles.meyer2@usda.gov

Duty Location: Pomeroy, Washington

Vacancies	Position	Announcement Number	Contact
0	District Assistant Fire Management Officer (AFMO) – Operations GW-0462-8/9	26-FIRE-P1VA-DZAFMOM-89DH	Tara Mackleit 509-843-4630 tara.mackleit@usda.gov
0	Supervisory District Fuels AFMO GW-0456-8/9	26-FIRE-P1R146-DFLS-89DH	Tara Mackleit 509-843-4630 tara.mackleit@usda.gov
1	Forestry Technician (Fire/Fuels) - District Fuels Technician GW-0462-8	26-FIRE-P1R14610-FFUELS-8DH	Eric Crawford 218-388-2215 eric.crawford@usda.gov
0	Supervisory Fire Engine Operator (SFE0) GW-0456-7 8	26-FIRE-P1R14610-SFEOH-78DH	Isaiah Jimenez 541-815-7780 isaiah.jimenez@usda.gov
0	Fire Engine Operator (FEO) GW-0456-6 7	26-FIRE-P1R14610-FEOH-67DH	Isaiah Jimenez 541-815-7780 isaiah.jimenez@usda.gov
0	Lead Forestry Technician (AFEO) GW-0462-5 6	26-FIRE-P1R14610-AFEO-56DH	Isaiah Jimenez 541-815-7780 isaiah.jimenez@usda.gov
1	Forestry Technician - Engine Senior FFT GW-0456-4 5	26-FIRE-P1R146-ENGSTF-45DH	Isaiah Jimenez 541-815-7780 isaiah.jimenez@usda.gov
0	Handcrew Supervisor (High Complexity) GW-0456-7 8	26-FIRE-P1VA-SHDCRW-78DH	Isaiah Jimenez 541-815-7780 isaiah.jimenez@usda.gov
0	Handcrew Asst. Supervisor (High Complexity) GW-0456-6 7	26-FIRE-P1VA-HCREWT2-67DH	Isaiah Jimenez 541-815-7780 isaiah.jimenez@usda.gov
1	Lead Forestry Technician (Hotshot/ Handcrew) GW-0462-5 6	26-FIRE-P1R14610-HCREW-56DH	Isaiah Jimenez 541-815-7780 isaiah.jimenez@usda.gov
3	Forestry Technician - Senior FFT - Hotshot/Handcrew GW-0456-4 5	26-FIRE-P1R14610-IHCRW-45DH	Isaiah Jimenez 541-815-7780 isaiah.jimenez@usda.gov
4	Wildland Forestry Aid – Region 6 GW-0456-3 4 FPL 5	26-FIRE-P1R610OCR-FFTR-34DH	Isaiah Jimenez 541-815-7780 isaiah.jimenez@usda.gov

Duty Location: Walla Walla, Washington

Vacancies	Position	Announcement Number	Contact
0	District Assistant Fire Management Officer (AFMO) – Operations GW-0462-8/9	26-FIRE-P1VA-DZAFMOM-89DH	Mike Moore 509-522-6284 michael.moore2@usda.gov
0	Supervisory District Fuels AFMO GW-0456-8/9	26-FIRE-P1R146-DFLS-89DH	Mike Moore 509-522-6284 michael.moore2@usda.gov
0	Forestry Technician (Fire/Fuels) - District Fuels Technician GW-0462-8	26-FIRE-P1R14610-FFUELS-8DH	Doug Cates 509-522-6033 douglas.cates@usda.gov
0	Supervisory Fire Engine Operator (SFE0) GW-0456-7 8	26-FIRE-P1R14610-SFEOH-78DH	Derek Dietz 509-522-6287 derek.dietz@usda.gov
2	Fire Engine Operator (FEO) GW-0456-6 7	26-FIRE-P1R14610-FEOH-67DH	Derek Dietz 509-522-6287 derek.dietz@usda.gov
3	Lead Forestry Technician (AFEO) GW-0462-5 6	26-FIRE-P1R14610-AFEO-56DH	Derek Dietz 509-522-6287 derek.dietz@usda.gov
1	Forestry Technician - Engine Senior FFT GW-0456-4 5	26-FIRE-P1R146-ENGSFF-45DH	Derek Dietz 509-522-6287 derek.dietz@usda.gov
0	Handcrew Supervisor (High Complexity) GW-0456-7 8	26-FIRE-P1VA-SHDCRW-78DH	Derek Dietz 509-522-6287 derek.dietz@usda.gov
2	Handcrew Asst. Supervisor (High Complexity) GW-0456-6 7	26-FIRE-P1VA-HCREWT2-67DH	Derek Dietz 509-522-6287 derek.dietz@usda.gov
1	Lead Forestry Technician (Hotshot/ Handcrew) GW-0462-5 6	26-FIRE-P1R14610-HCREW-56DH	Derek Dietz 509-522-6287 derek.dietz@usda.gov
1	Forestry Technician - Senior FFT - Hotshot/Handcrew GW-0456-4 5	26-FIRE-P1R14610-IHCRW-45DH	Derek Dietz 509-522-6287 derek.dietz@usda.gov
1	Wildland Forestry Aid – Region 6 GW-0456-3 4 FPL 5	26-FIRE-P1R610OCR-FFTR-34DH	Derek Dietz 509-522-6287 derek.dietz@usda.gov

IFPM/FSFPM Requirements

Review the required documents section and selective placement factors for each job announcement applying to.

For questions on Interagency Fire Program Management/Forest Service Program Management (IFPM/FSFPM) qualifications for specific qualifications please visit: [IFPM/FS-FPM Crosswalk](#). Verification that applicants meet selective placement factors can be provided by submitting a current Incident Qualification Certification System (IQCS) Master Record or a completed NWCG Taskbook with the front cover and Verification/Certification of Completed Task Book for the Position completely filled out (legibly) and signed by the Final Evaluator and Certifying Official, if a master record is not available.

The Process and Timeline

August 11, 2025	Outreach begins. Information is available on the Pacific Northwest Region website listing all vacant permanent fire vacancies and locations from the GW-0462-3 through 10 levels for Alaska, Oregon and Washington.
August 22, 2025	Single Vacancy Announcement for all GW-3 through GW-10 Positions open in USA Jobs. Apply through www.usajobs.gov . Applicants are encouraged to apply for multiple locations (where they would accept a position if offered), even if positions for certain locations in which you are interested are not listed as vacant. Vacancies may occur during the hiring process and could be filled during Selection Week.
September 23, 2025	Application deadline – all vacancy announcements close at 8:59 pm (pacific time)
October 27, 2025	Certificate of eligible applicants are referred to the hiring managers. Applicants should check their email or login to their USAJobs Profile to check the status of their application at this time to determine if they were “referred to selecting official”. During this time hiring managers review applicant resume and other supporting documentation and request references.
November 3 – December 12, 2025	Selections. Representatives from each forest will make recommendations for hiring. Selected Applicants will be notified by a Forest Service representative by phone. Applicants should be readily available during this time frame. Traditionally higher graded GS levels are filled during the first, moving to lower grade levels during the second week of selections. During the selection period, candidates will be given 4 hours to respond to voicemails or emails from the recommending officials.
March, 2026	First possible effective dates for new hires, new to the agency

About the Forest:

The Umatilla National Forest consists of four Ranger Districts spanning across northeast Oregon and southeast Washington. The forest is located in the Blue Mountains of NE Oregon and SE Washington; with elevation ranging 1800 to 8000 feet, the forest vegetation ranges from dry open grass/shrub ponderosa pine to cold moist conifer forest.

Each Ranger District is comprised of a District FMO; District AFMO-Operations; District AFMO-Fuels; 2 or 3 Type 6 Engines and 1-Handcrew (10 person). The North Fork John Day District also hosts the Umatilla Veterans Crew (20-person crew). Annually, approximately 80 fires occur across the Forest, which predominately occur as a result of periodic thunderstorm events and can produce multiple ignitions. The forest commonly assists other agencies on mutual aid fires, including Oregon Department of Forestry, Washington DNR, BLM, BIA, and the adjacent forests within the Blue Mountains (Malheur and Wallowa-Whitman). The Umatilla also has a proactive integrated vegetation management program which includes mechanical and hand thinning along with landscape scale prescribed fire. While most of the thinning work is contracted, fire crews can also be seen thinning and implementing prescribed fire projects during the shoulder seasons.

Additional Information on the Umatilla National Forest can be found at: <http://www.fs.usda.gov/umatilla/>

Specific Duty Location Information:

Heppner (Heppner Ranger District)

During the winter months, Fire crews are located at the district office in Heppner. During fire season, fire crews utilize the Tupper Guard Station located approximately 1 hour from Heppner. **No Year-Round Government Housing is available.**

Heppner is a small community of approximately 1,200 people and is the county seat of Morrow County. It is located approximately 45 miles south of Hermiston (population 20,000) and 65 miles southwest of Pendleton (population 17,000). Tri-Cities, WA (Population 322,875) is located 1.5 hours away and has all the amenities that a city this size would including a Regional Airport. Heppner is situated in the rolling wheatlands which are the foothills to the Blue Mountains. Heppner has one elementary school, one junior high school and one high school. The housing selection is affordable (\$45,000-\$150,000) but can be limited. Rentals are limited too but can be found. Heppner is a vibrant small town with many amenities and local services including a hospital/medical clinic, churches, library, bank, drug store, as well as other locally owned businesses. Agriculture is the area’s primary industry and many of the County services have

offices in Heppner. It also has a golf course, swimming pool, basketball/tennis courts, as well as a lake nearby. Hunting, fishing, snowmobiling, and OHV recreation are some of the draws to living in Heppner as well as being a vibrant, full-service community off the beaten path, but also not too far from larger communities.

Additional Community Information: <https://www.heppnerchamber.com/>

Ukiah, Oregon (North Fork John Day Ranger District)

Fire crews are based out of the district office all year. **Government Housing may be available.** The district has several housing options in Ukiah: multiple bunkhouses on the district compound, a separate housing annex with modular homes, and four RV spots. Availability is limited. Private housing options for purchase or rental are limited in Ukiah.

Ukiah is a small mountain community with a year-round population of 250. The district is considered remote, but the town offers a general store (grocery/hardware), a motel, a laundromat, a cafe, two churches, a tavern, a gas station, a city park with basketball court, a post office, and school with grades K-12. There are also two RV parks with full hookups, and one offers cabin rentals.

Pendleton (population: 17,000), location of the Umatilla National Forest Supervisor's Office, is 52 miles north on US Highway 395; La Grande (population: 13,100) is 56 miles east on State Highway 244. Many employees live in Pendleton and La Grande and commute daily. **Remote Site Allowance may be available for commuters.** Both Pendleton and La Grande are full-service communities with a reasonable variety of shopping opportunities. There is no government housing available in either Pendleton or La Grande.

Pomeroy, Washington (Pomeroy Ranger District)

Fire Crews are based out of the District Office all year. **No Government Housing is Available.**

Pomeroy is the only town in Garfield County and is the County Seat. It is a full-service community of approximately 1,250 residents with a hospital/care center, medical doctor and practitioner, dentist, numerous churches, 1 grocery store, mini-mart, 3 banks, a motel, 2 Bed & Breakfasts, 3 eating establishments, 3 card operated gas stations (2 accept cash during regular business hours), pharmacy, hardware store, several small businesses, museum, and a library. Just 30 miles to the east is the - Clarkston Washington- Lewiston Idaho hub that contains any medical and shopping needs an individual might need. There are numerous other large towns within 2 hours or less driving distance such as Spokane, Walla Walla, and Pullman, WA and Moscow, ID.

The public school system in Pomeroy has very good marks for the quality of education provided in grades K-12. There are numerous colleges and universities in the surrounding area such as Walla Walla Community College (with a branch at Clarkston), Walla Walla University and Whitman College in Walla Walla, Lewis and Clark State College in Lewiston, University of Idaho in Moscow, Washington State University in Pullman, and Gonzaga University, Whitworth, Eastern Washington University and Spokane Community College all surrounding Spokane.

Additional Community Information: <http://www.pomeroychamberofcommerce.com/>

Walla Walla, Washington (Walla Walla Ranger District)

During the winter months, the fire crews are located at the District Office in Walla Walla, WA. During fire season, units are staffed at Tollgate Guard Station which is approximately 1 hour from Walla Walla.

Government Housing (bunkhouse) may be available during the field season.

The Walla Walla Valley is nestled at the foot of the Blue Mountains, on the sunny side of Washington State. An "oasis in the desert," the valley has an abundance of trees, many of them record trees for the State, and 300 days of sunshine a year. The average annual rainfall is less than 20" per year and there are four distinct seasons. Cultural and community events are more numerous than one would expect in an area of 55,000 people. Whitman College, a prestigious liberal arts and sciences college, maintains a beautiful campus near downtown Walla Walla. In nearby College Place, Walla Walla College, operated by the 7th Day Adventist Church is also highly regarded. Walla Walla Community College is an accredited public two-year college that also offers several degree programs in partnership with Washington State

University. Together, these institutions offer many options for undergraduate or graduate degrees and contribute to the vitality of the community. Several wineries and vineyards have established in the area in recent years, and more continue to open. There is commercial air service from Walla Walla, and a new airport opened in 2001. Additional flights are available from Pasco, about a 55-minute drive from Walla Walla.

Walla Walla is a full-service community offering excellent shopping, restaurants, theaters, parks, hospitals, and clinics. The town has a well-developed transit system and great schools.

Forest Service employees on the workforce reduction placement system list will receive priority consideration and CTAP/ICTAP candidates will receive the appropriate consideration.

The U.S. Department of Agriculture (USDA) prohibits discrimination on all its programs and activities on the basis of race, color, national origin, gender, religion, age, disability, political beliefs, sexual orientation, and marital or family status. (Not all prohibited bases apply to all programs.) People with disabilities who require alternative means for communication of program information (Braille, large print, audiotape, etc.) should contact USDA's TARGET Center at (202) 720-2600 (voice and TDD). To file a complaint of discrimination, write USDA, Director, Office of Civil Rights, Room 326-W, Whitten Building, 14th and Independence Avenue, SW, Washington, DC 20250-9410 or call (202) 720-5964 (voice and TDD). USDA is an equal opportunity provider and employer.