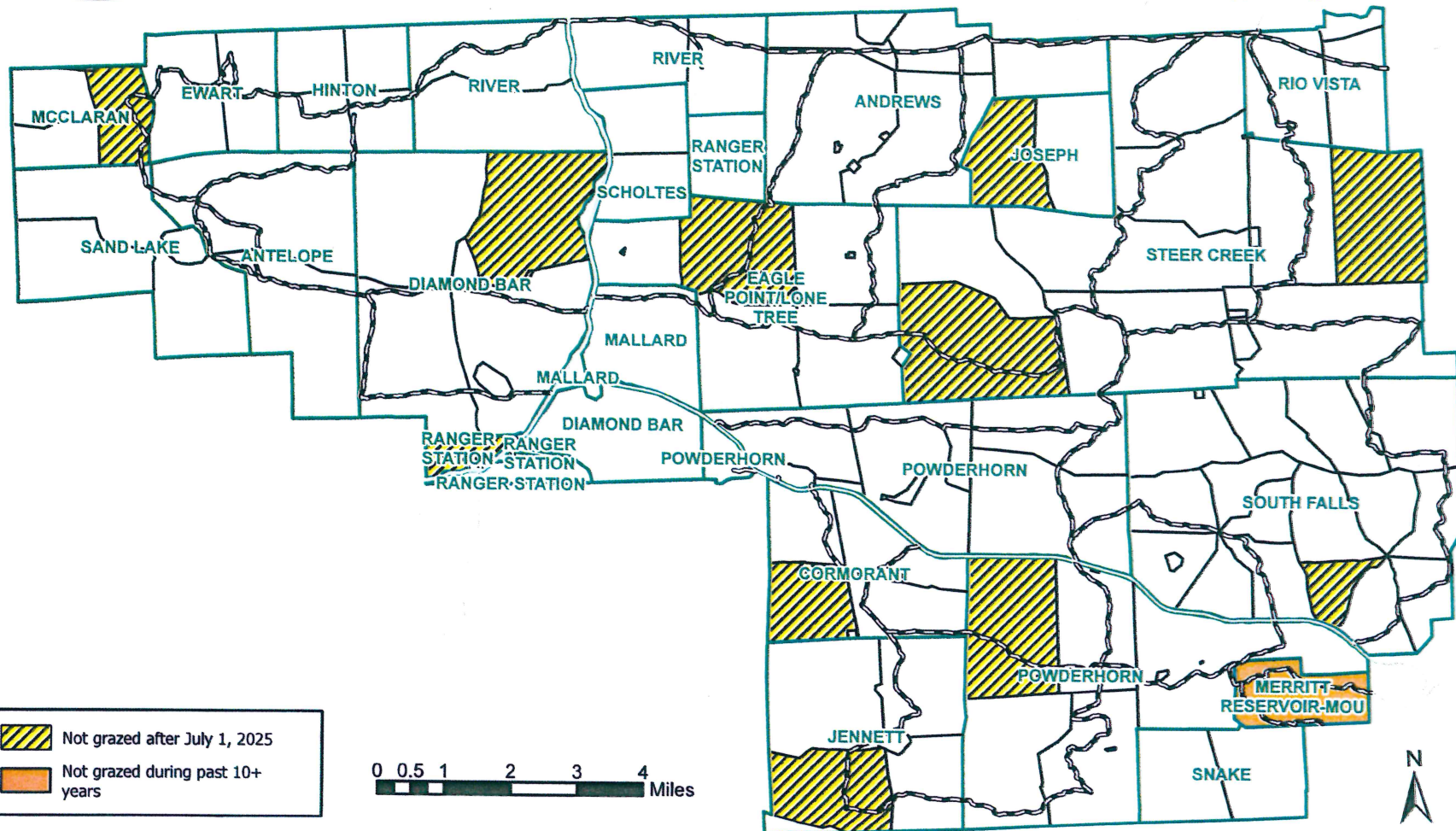




## 2025 Recently Rested Pastures at McKelvie

This document does not serve any legal capacity regarding motor vehicle access. Please refer to a Motor Vehicle Use map for rules regarding legal motorized travel within the Bessey Ranger District of the Nebraska National Forests. A free copy of the Motor Vehicle Use Map may be obtained by going online to [www.avenzamaps.com](http://www.avenzamaps.com). For questions about this map, please contact the Bessey Ranger District (308) 533-2257, 40637 River Loop, Halsey, NE 69142.



**Disclaimer:** This product is reproduced from geospatial information prepared by the U.S. Department of Agriculture, Forest Service. GIS data and product accuracy may vary. They may be: developed from sources of differing accuracy, accurate only at certain scales, based on modeling or interpretation, incomplete while being created or revised, etc. Using GIS products for purposes other than those for which they were created, may yield inaccurate or misleading results. The Forest Service reserves the right to correct, update, modify, or replace, GIS products without notification. For more information, contact (Nebraska National Forest, 308-432-0300). This map does not guarantee hunting success in any one area, as grouse movements and needs change throughout the season. Opportunities for viewing prairie grouse exist during the spring. For questions about hunting or viewing, please contact the Bessey Ranger District at (308) 533-8112.

Date: 8/21/2025

## Harvest Summary

Prairie grouse populations are cyclical and respond to a number of variables, including habitat conditions and climatic events. Prairie grouse wing collection helps resource managers determine trends in sharp-tailed grouse and greater prairie chicken populations, as well as the recreational activity of grouse hunting. They also provide a useful index of prairie grouse productivity. Wings collected by hunters on public lands in the sandhills (right) provide a glimpse at the number of birds harvested by hunters since the late 1970's. Thank you for your participation, and good luck.

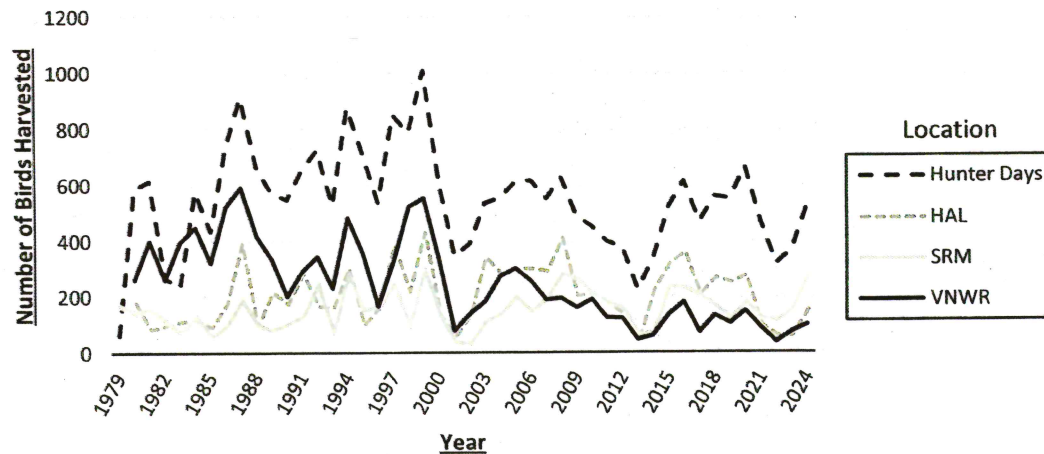
HAL = Halsey (Bessey Ranger District)

SRM = Samuel R. McKelvie National Forest

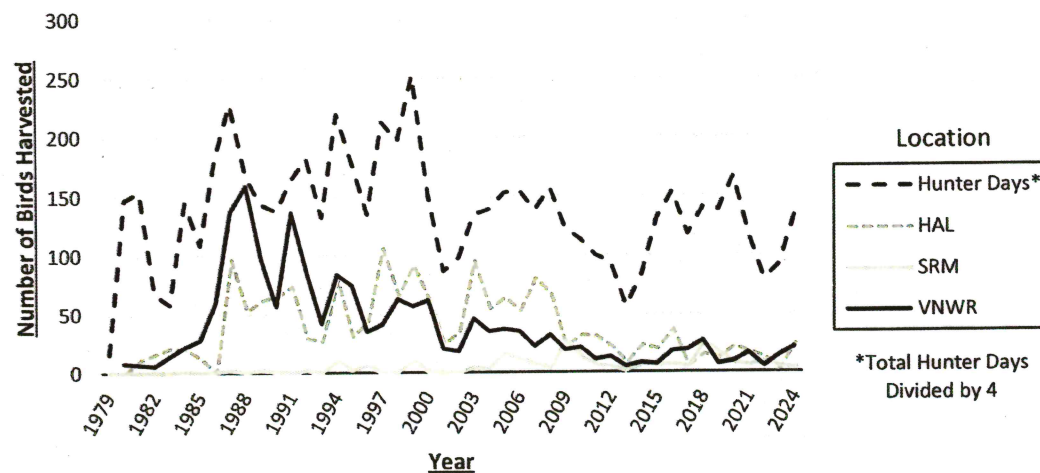
VNWR = Valentine National Wildlife Refuge



### Sharp-tailed Grouse Harvest 1979-2024



### Greater Prairie Chicken Harvest 1979-2024



\*Total Hunter Days  
Divided by 4