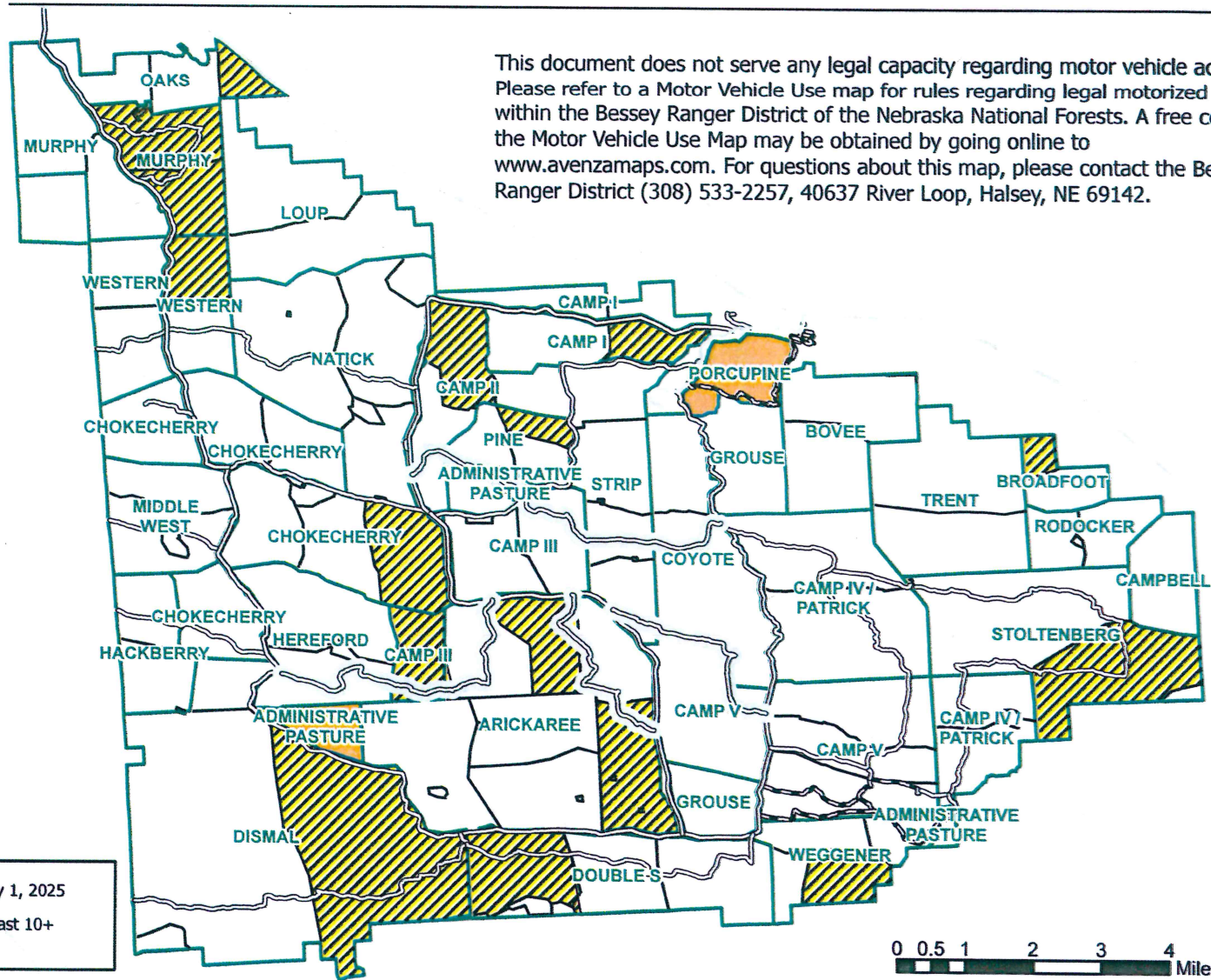




Forest Service
U.S. DEPARTMENT OF AGRICULTURE

2025 Recently Rested Pastures at Bessey



Disclaimer: This product is reproduced from geospatial information prepared by the U.S. Department of Agriculture, Forest Service. GIS data and product accuracy may vary. They may be: developed from sources of differing accuracy, accurate only at certain scales, based on modeling or interpretation, incomplete while being created or revised, etc. Using GIS products for purposes other than those for which they were created, may yield inaccurate or misleading results. The Forest Service reserves the right to correct, update, modify, or replace, GIS products without notification. For more information, contact (Nebraska National Forest, 308-432-0300). This map does not guarantee hunting success in any one area, as grouse movements and needs change throughout the season. Opportunities for viewing prairie grouse exist during the spring. For questions about hunting or viewing, please contact the Bessey Ranger District at (308) 533-8112.

Date: 8/21/2025

Harvest Summary

Prairie grouse populations are cyclical and respond to a number of variables, including habitat conditions and climatic events. Prairie grouse wing collection helps resource managers determine trends in sharp-tailed grouse and greater prairie chicken populations, as well as the recreational activity of grouse hunting. They also provide a useful index of prairie grouse productivity. Wings collected by hunters on public lands in the sandhills (right) provide a glimpse at the number of birds harvested by hunters since the late 1970's. Thank you for your participation, and good luck.

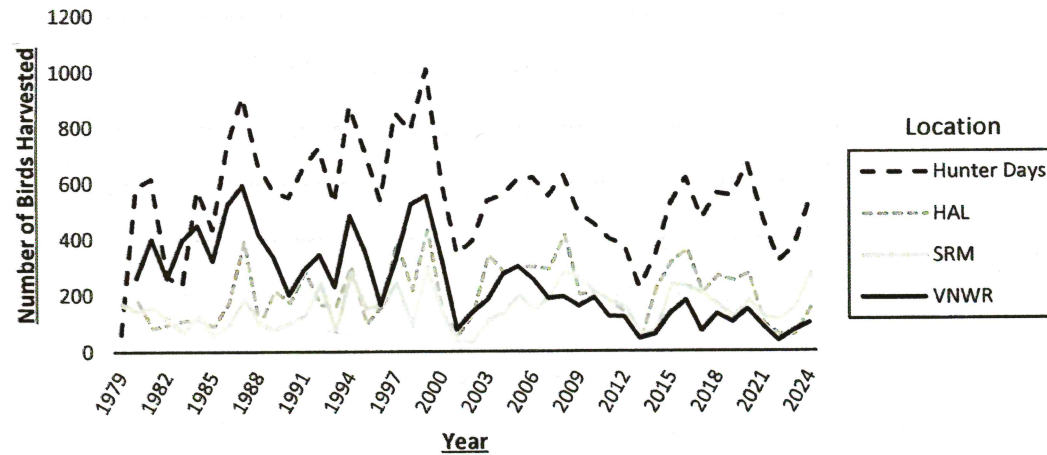
HAL = Halsey (Bessey Ranger District)

SRM = Samuel R. McKelvie National Forest

VNWR = Valentine National Wildlife Refuge



Sharp-tailed Grouse Harvest 1979-2024



Greater Prairie Chicken Harvest 1979-2024

