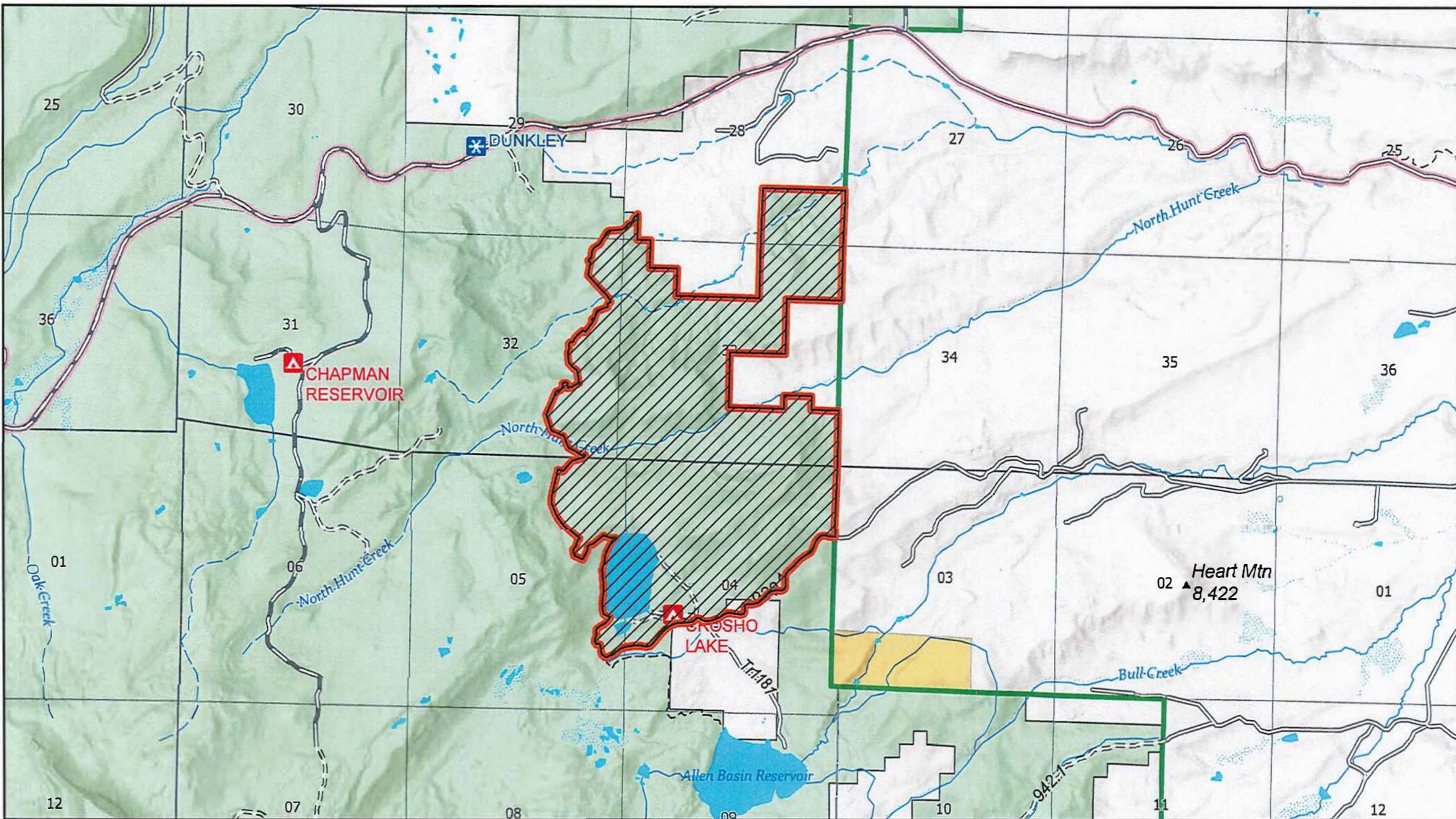




# Exhibit A -Location Map | 02-06-05-25-254 (Crosho Fire Closure)


Medicine Bow-Routt National Forests & Thunder Basin National Grassland | Yampa Ranger District



**Closure Location Description**

Described Area: 1207 Acres

T.3N, R.86W, Sections 28, 29, 32, 33  
 T.2N, R.86W, Sections 4, 5



 Forest Closure Area

