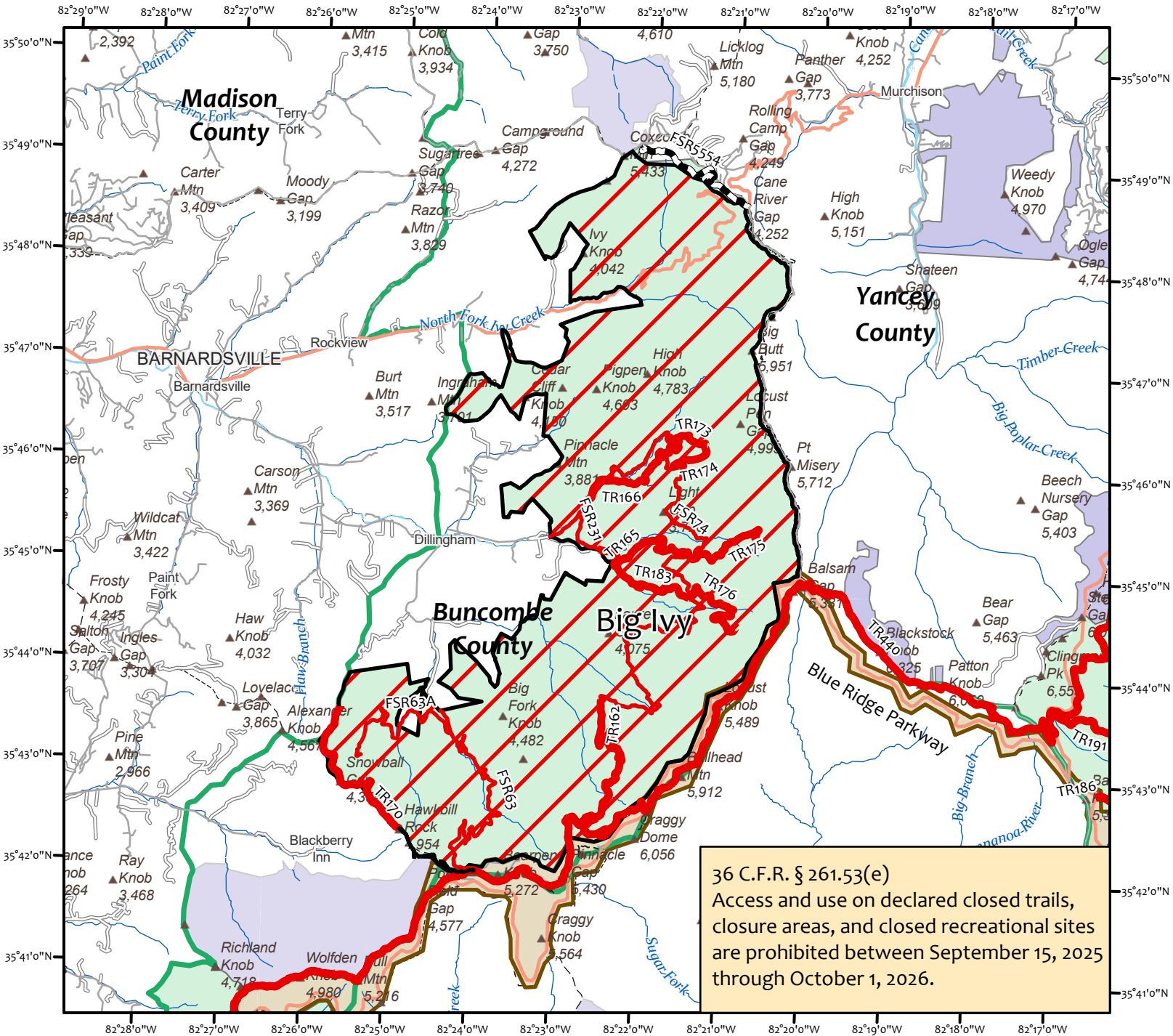




Pisgah National Forest Appalachian Ranger District Closure Order

FOREST ORDER#



Disclaimer

The USDA Forest Service uses the most current and complete data available. GIS data and product accuracy may vary. Using GIS products for purposes other than those for which they were intended may yield inaccurate or misleading results. The USDA Forest Service reserves the right to correct, update, modify, or replace GIS products without notification. This map is not a legal land line or ownership document. Public lands are subject to change and leasing, and may have access restrictions; check with local offices. Obtain permission before entering private land.

CLOSURE AREA

STATUS

- CLOSED
- OPEN

- Closed Roads**
 FSR 231 LOWER STAIRE
 FSR 63 STONY FORK
 FSR 63A HAWKSBILL CREEK
 FSR 74 BIG IVY
 (Coleman Boundary)

FS ROAD

STATUS

- CLOSED
- OPEN

- Closed Trails**
 TR174 LITTLE ANDY
 TR173 UPPER CORNER ROCK
 TR183 STAIR CREEK
 TR175 PERKINS
 TR176 BEAR PEN
 TR440 MTS - APPALACHIAN RD
 (Portion on National Forest)

FS TRAIL

STATUS

- CLOSED
- OPEN

- Partially Closed Trails**
 TR165 WALKER CREEK
 TR166 ELK PEN
 TR162 DOUGLAS FALLS
 TR170 SNOWBALL (Hawkbill Rock to old Snowball fire tower site)

