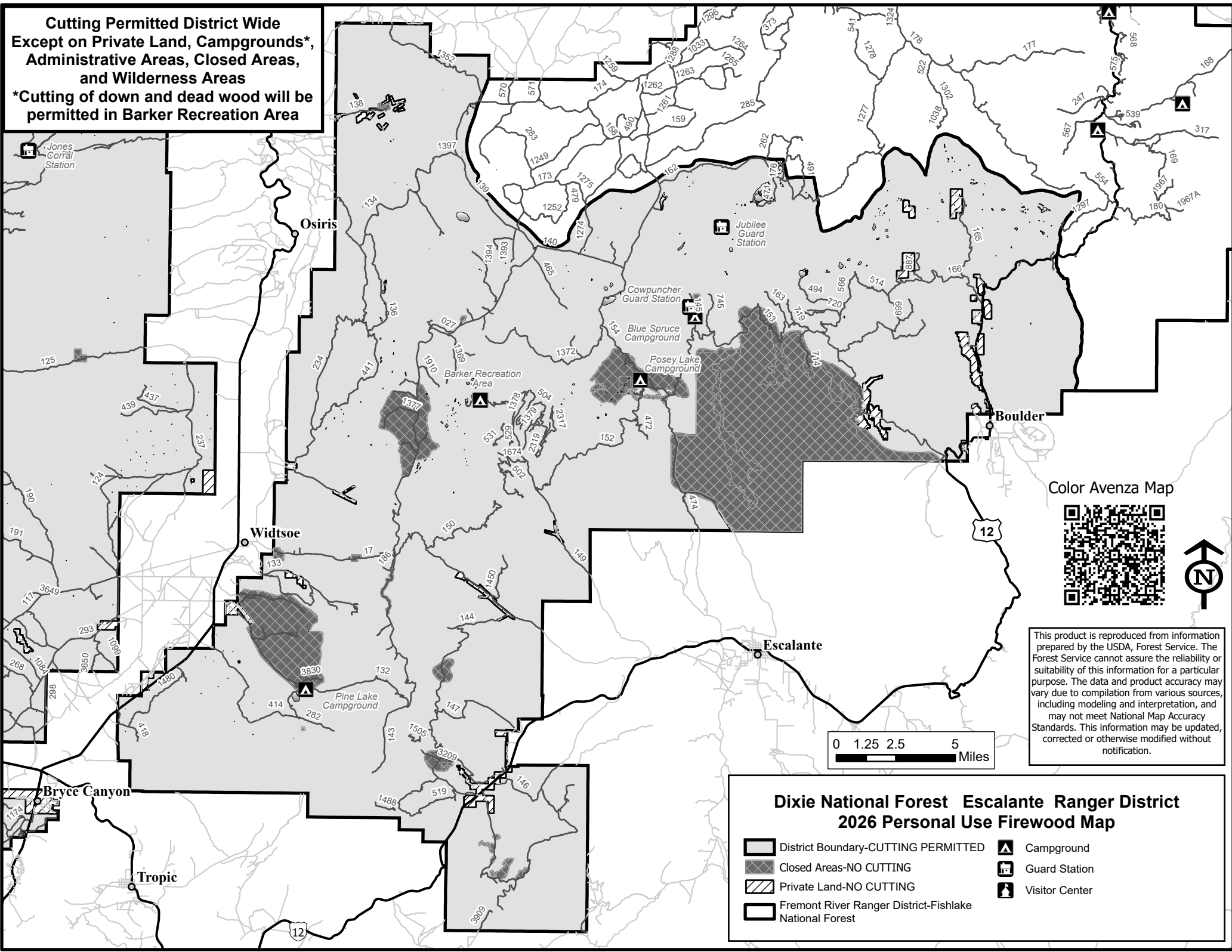


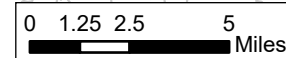
**Cutting Permitted District Wide
Except on Private Land, Campgrounds*,
Administrative Areas, Closed Areas,
and Wilderness Areas**
*Cutting of down and dead wood will be
permitted in Barker Recreation Area



Color Avenza Map



This product is reproduced from information prepared by the USDA, Forest Service. The Forest Service cannot assure the reliability or suitability of this information for a particular purpose. The data and product accuracy may vary due to compilation from various sources, including modeling and interpretation, and may not meet National Map Accuracy Standards. This information may be updated, corrected or otherwise modified without notification.



Dixie National Forest Escalante Ranger District 2026 Personal Use Firewood Map

- | | |
|--|----------------|
| District Boundary-CUTTING PERMITTED | Campground |
| Closed Areas-NO CUTTING | Guard Station |
| Private Land-NO CUTTING | Visitor Center |
| Fremont River Ranger District-Fishlake National Forest | |