



United States  
Department of  
Agriculture

# Lincoln National Forest

## Christmas Tree Cutting Guidelines & Safety Tips



Forest Service  
Lincoln  
National Forest

**How tall of a tree may I cut?** The tree may not exceed 10 feet in height. Remember to take an axe or saw to cut your tree.

**How many permits may I purchase?** Permit sales are limited to one tree per household.

**What will happen if I cut a tree without my permit?** You could be fined and your tree confiscated.

**Where can I cut a tree?** Trees may be cut anywhere on US Forest Service lands except within wilderness areas, within 300 feet of a recreation site (campgrounds, developed trails, etc.) and/or within 100 feet of a paved road. It is your responsibility to ensure that you are on Forest Service lands and not on private land. A small map comes with your permit and is also available at [www.fs.usda.gov/lincoln](http://www.fs.usda.gov/lincoln); however a more detailed visitor map is available for purchase at any Lincoln National Forest office. A free Motor Vehicle Use Map is also available at any of our offices.

**May I dig up a tree with this permit?** Yes. You may dig up a tree if you fill in the hole by caving in the sides and scraping in material from the surrounding area.

**How do I display my permit?** If you have a sticky tag purchased from one of our offices, peel off the paper backing and fold the tag securely over onto itself around one of the lower branches. Alternatively, if you purchased your permit online, please print and place the permit so that it is clearly visible on the dashboard of your vehicle with the tree cutting date field(s) completed.

**Can I cut the top out of a tree?** No. You may not cut out a portion of the tree. The entire tree must be cut at the base of the tree as low to the ground as possible.

**Can I get a refund if I do not use my permit?** All sales are final. No refunds will be made, even if adverse weather conditions prevent you from reaching a cutting area. No replacement will be made for lost permits.

### Safety Tips:

- Dress warmly – it does get cold in the mountains.
- Start out with a full tank of gas.
- Carry blankets, matches and extra food in case of an emergency.
- Certain areas of the forest may have snowfall and travelers should be prepared with four-wheel-drive vehicles, chains and winter equipment as needed.
- Check the weather forecast before you leave home. The weather in the mountains can change suddenly and make your chosen area inaccessible.
- Be prepared to walk a slight distance to find your perfect tree.

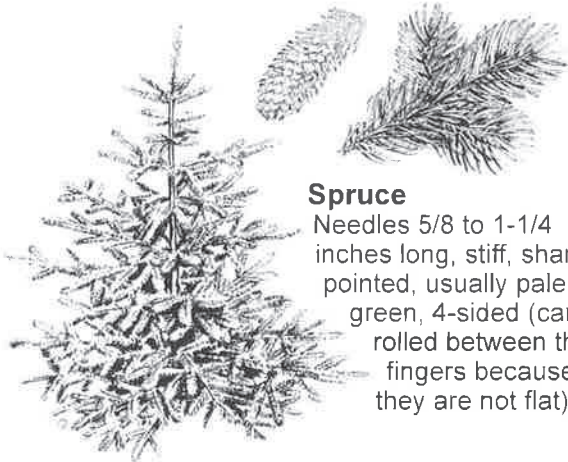


### Piñon Pine

Needles 1 to 2 inches long, usually 2 (sometimes 1-3) in a bundle with a thin "sheath" at the base holding the needles together.

### Ponderosa Pine

Needles 4 to 7 inches long, usually 3 in a bundle with a thin "sheath" at the base holding the needles together.



### Spruce

Needles 5/8 to 1-1/4 inches long, stiff, sharp pointed, usually pale green, 4-sided (can be rolled between the fingers because they are not flat).



### Douglas-fir

Needles 3/4 to 1/18 inch long, flat, blunt tips, dark blue green. Needles at their bases have thin "stems." If cones are present, they will have thin 3-pointed leaf-like bracts extending beyond cone scales.



### White Fir

Needles 1-1/2 to 2-1/2 inches long, flat with blunt tips, usually twisted and curving upward, pale blue green. No "stems" at bases of needles.



# Smokey Bear Ranger District Christmas Tree Area



## Area 1

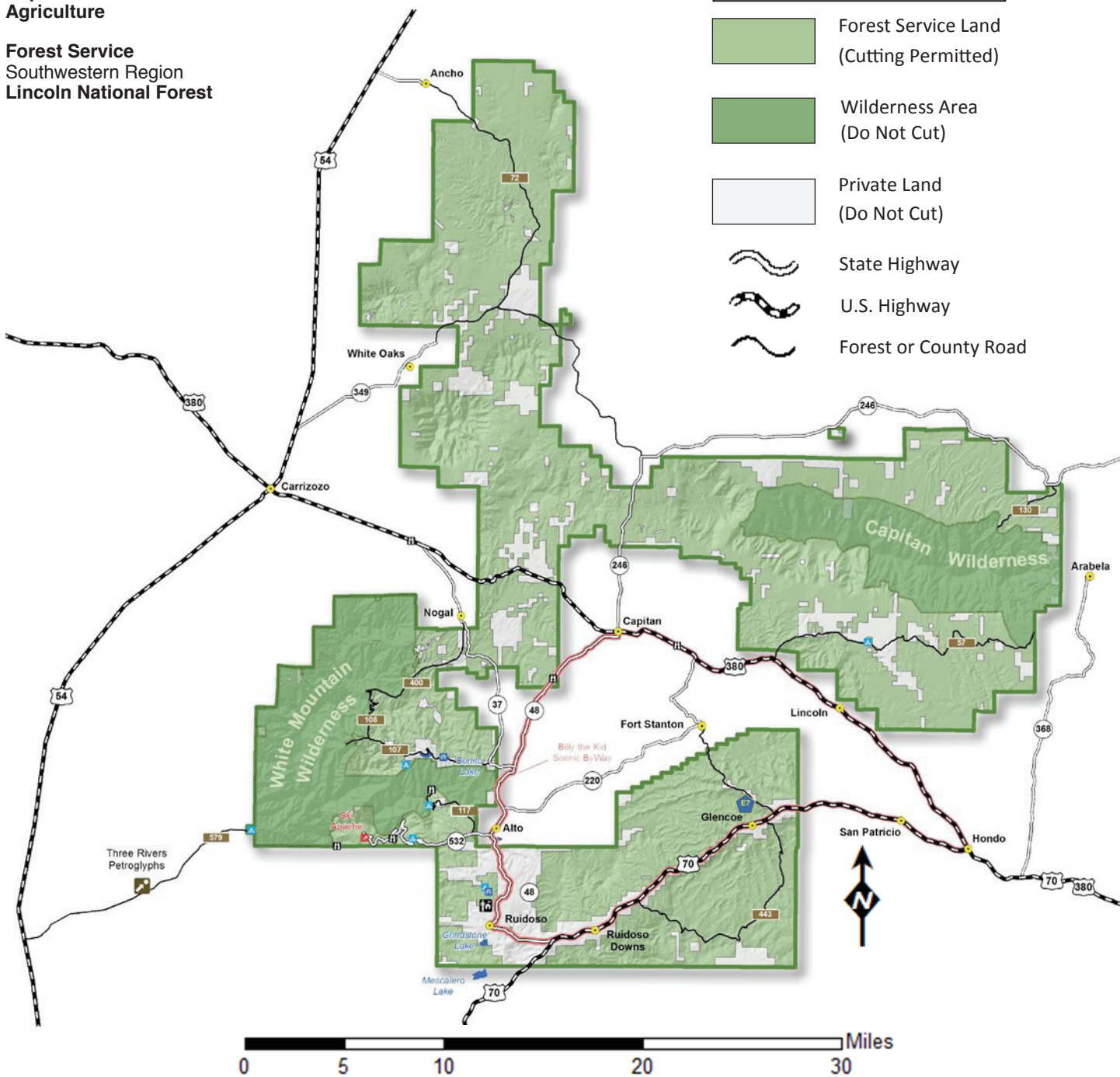


United States  
Department of  
Agriculture

Forest Service  
Southwestern Region  
Lincoln National Forest

Smokey Bear Ranger District  
901 Mechem Drive  
Ruidoso, NM 88345  
(575) 257-4095

-  Forest Service Land (Cutting Permitted)
-  Wilderness Area (Do Not Cut)
-  Private Land (Do Not Cut)
-  State Highway
-  U.S. Highway
-  Forest or County Road








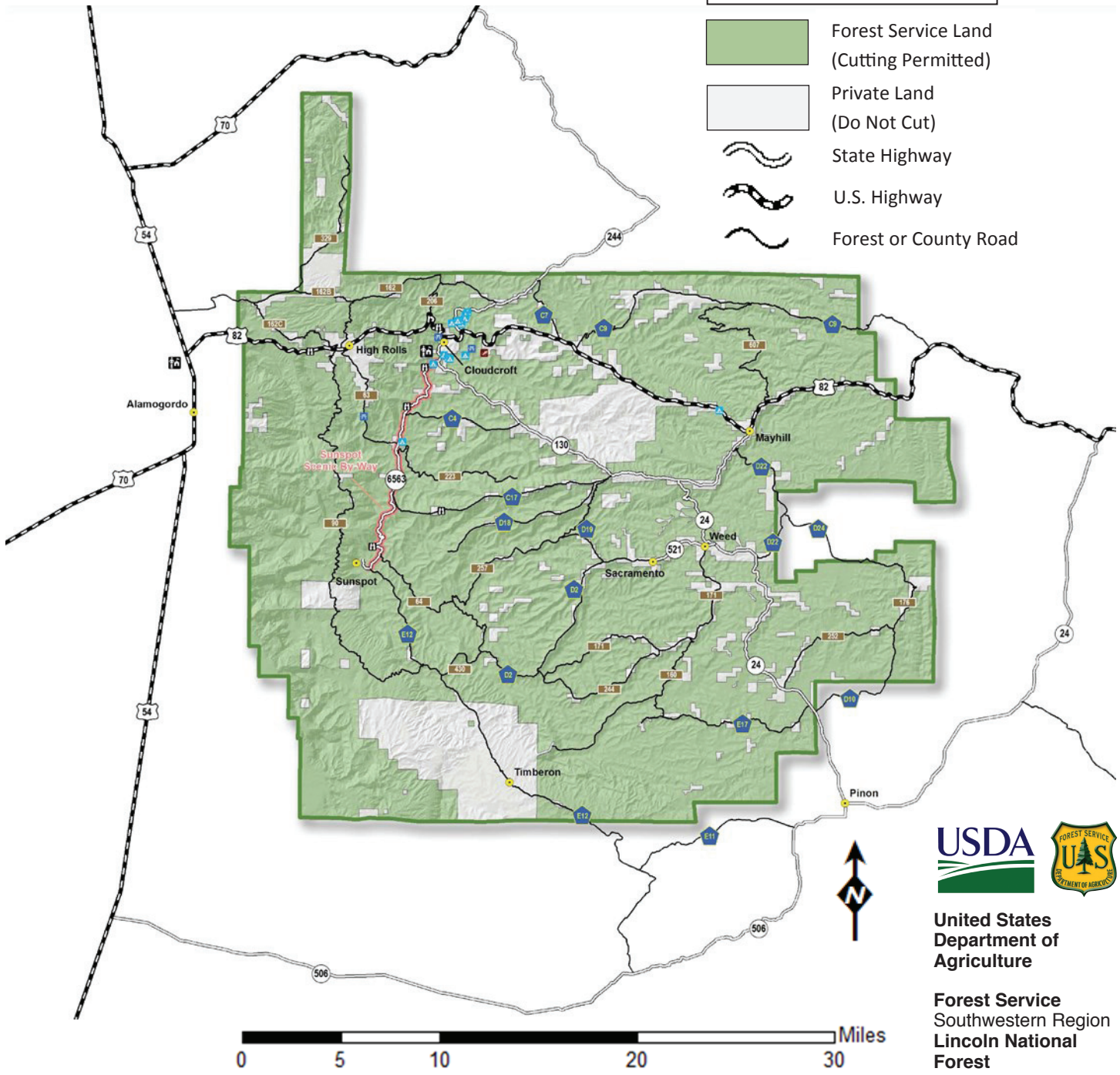
# Sacramento Ranger District

## Christmas Tree Area

### Area 2

Sacramento Ranger District  
 4 Lost Lodge Road  
 Cloudcroft, NM 88317  
 (575) 682-2551

-  Forest Service Land (Cutting Permitted)
-  Private Land (Do Not Cut)
-  State Highway
-  U.S. Highway
-  Forest or County Road



**United States Department of Agriculture**

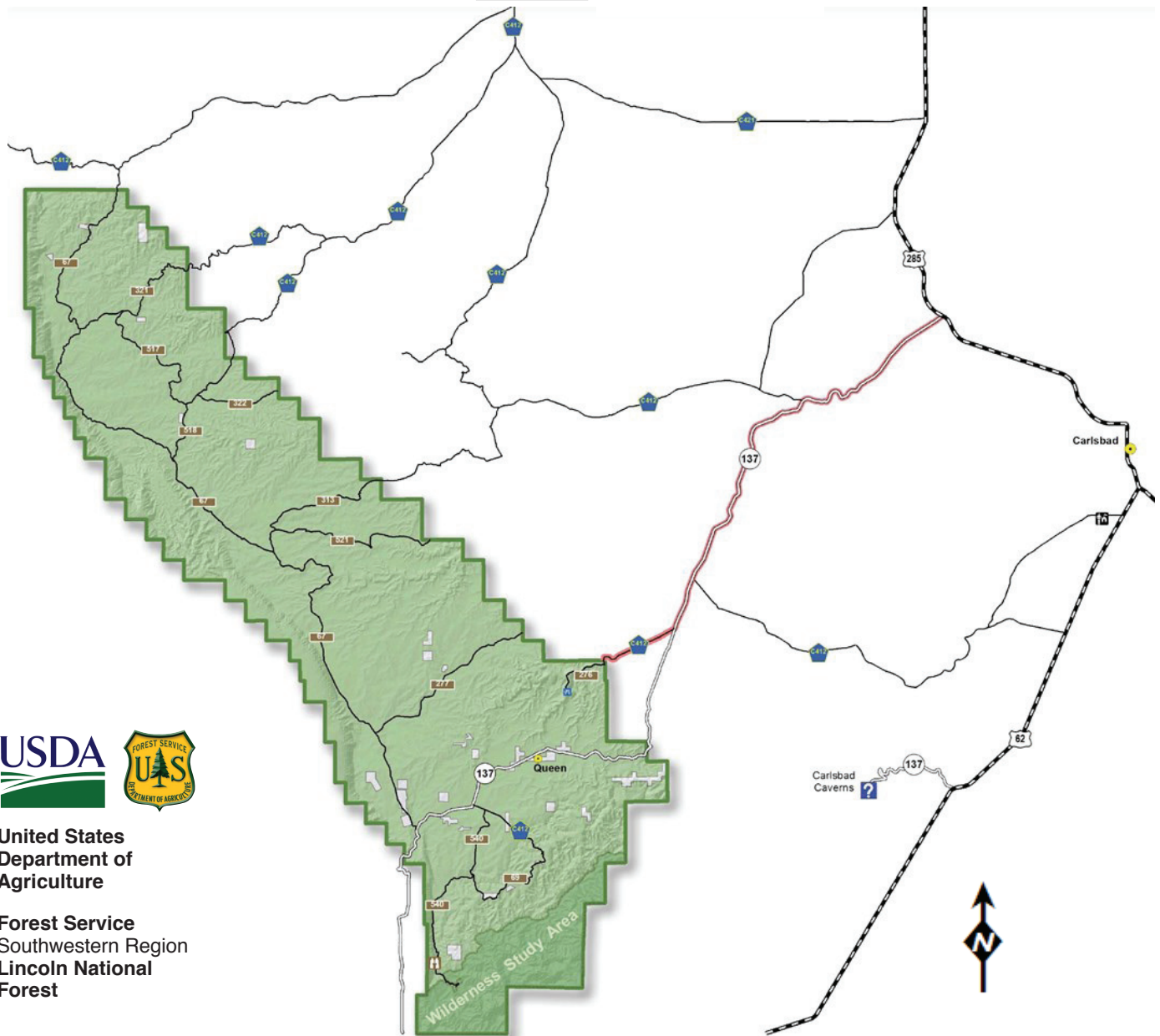
**Forest Service**  
 Southwestern Region  
 Lincoln National Forest

# Guadalupe Ranger District Christmas Tree Area

## Area 3

Guadalupe Ranger District  
Carlsbad, NM

- Forest Service Land (Cutting Permitted)
- Wilderness Area (Do Not Cut)
- Private Land (Do Not Cut)
- State Highway
- U.S. Highway
- Forest or County Road



United States  
Department of  
Agriculture

Forest Service  
Southwestern Region  
Lincoln National  
Forest



USDA is an equal opportunity provider, employer and lender.