



United States  
Department of  
Agriculture

Forest  
Service

Superior National Forest  
Supervisor's Office

8901 Grand Avenue Place  
Duluth, MN 55808-1122  
(218) 626-4300  
(218) 626-4398 (FAX)

---

**File Code:** 2450

**Date:** November 13, 2025

Dear Prospective Purchasers of National Forest Timber,

This letter summarizes the approximate locations, estimated volumes, and approximate compositions of timber sale and stewardship contracts (IRTCs) planned to be offered on the Superior National Forest (SNF) during the next 12 to 18 months.

Our tentative goal for fiscal year 2026 is 60 million board feet (MMBF), which is approximately 97,000 hundred cubic feet (CCF), or approximately 120,000 cords. Approximately 15 to 20 percent of this total is expected to be offered through the Good Neighbor Authority (GNA) agreement between the Superior National Forest and the State of Minnesota Department of Natural Resources. We also expect 2 or more sales containing SNF timber to be offered by The Nature Conservancy and The Ruffed Grouse Society via stewardship agreements.

The last 12 months have been some of the most challenging in recent memory. We sold 56.07 MMBF in fiscal year 2025. This represents a 20 percent decrease from fiscal year 2024's 70.50 MMBF sold. Prior to last year, we had been steadily increasing our timber output for much of the previous decade. There is a myriad of reasons for this decline. We have struggled to fill field-going positions in timber sale preparation and support programs since the COVID-19 pandemic. Vacancy rates on our prep crews have ranged from 40 to 70% during the last 5 years. We have been under a hiring freeze since January 20<sup>th</sup>, 2025. Budget reductions in fiscal year 2025 limited our ability to pay overtime and prevented us from augmenting our prep crews with seasonal staff from other programs during the spring and fall "shoulder" seasons. Both have been critical to increasing our timber output in recent years. Several prep crew personnel were re-deployed to fight the Jenkins Creek and Camp House fires during May and June, 2025. These fires burned over 28,000 acres, much of it on the SNF. We lost several individuals who were terminated during their probationary periods last winter and declined to return when re-offered their positions several months later. Cumbersome review processes have prevented us from outsourcing time-critical timber sale prep functions. Increased reliance on external partnerships in recent years has added capacity at the periphery and allowed us to harvest hundreds of acres of commercially non-viable timber. However, dollar for dollar, partnerships are much less efficient than our own personnel when it comes to preparing commercially viable timber sales. Addressing these issues will be critical to maintaining our current output and placing us back on an upward trajectory in the years to come.

Despite these challenges, we had many successes during fiscal year 2025. We have salvaged over 3.7 MMBF damaged by the Jenkins Creek and Camp House fires to date. Further salvage efforts are on-going. We had zero no-bid in-house timber sales or IRTC's and only 2 no-bid GNA sales during fiscal year 2025. This is a substantial reduction in no-bid sales compared to



previous years. We continue to scrutinize every sale and look for ways to make each one as attractive and fiscally disciplined as possible. We will continue to offer scaled sales whenever scaling will reduce costs and risk to Purchasers. We are currently in talks with additional partners to help us sell timber in fiscal year 2026.

The attached pages contain more detailed information about our planned in-house timber sales and IRTCs. The exact composition of GNA and stewardship agreement sales to be offered is yet to be determined. Estimated volumes are conservative. Prospective Purchasers who have requested to be on our mailing list will continue to receive written notification when sales are advertised. Contract information, official documents, bid forms, and sale area maps will be posted under "Timber Sale Info" at the time of advertisement at:

<https://www.fs.usda.gov/superior/>

More detailed information about each anticipated sale may be obtained by contacting this office or the corresponding local Ranger District office:

<b>District</b>	<b>Address</b>	<b>Phone Number</b>
Gunflint	2020 W. Hwy 61, Grand Marais, MN 55604	(218) 387-1750
Kawishiwi	1393 Highway 169, Ely, MN 55731	(218) 365-7600
LaCroix	320 N. Highway 53, Cook, MN 55723	(218) 666-0020
Laurentian	318 Forestry Road, Aurora, MN 55705	(218) 453-8650
Tofte	7355 West Hwy 61, Tofte, MN 55615	(218) 663-8060

Information regarding Minnesota DNR offerings of National Forest Timber is available at:

<https://www.dnr.state.mn.us/forestry/timbersales/index.html>

Sincerely,



Digitally signed by THOMAS HALL  
Date: 2025.11.13 11:21:17 -06'00'

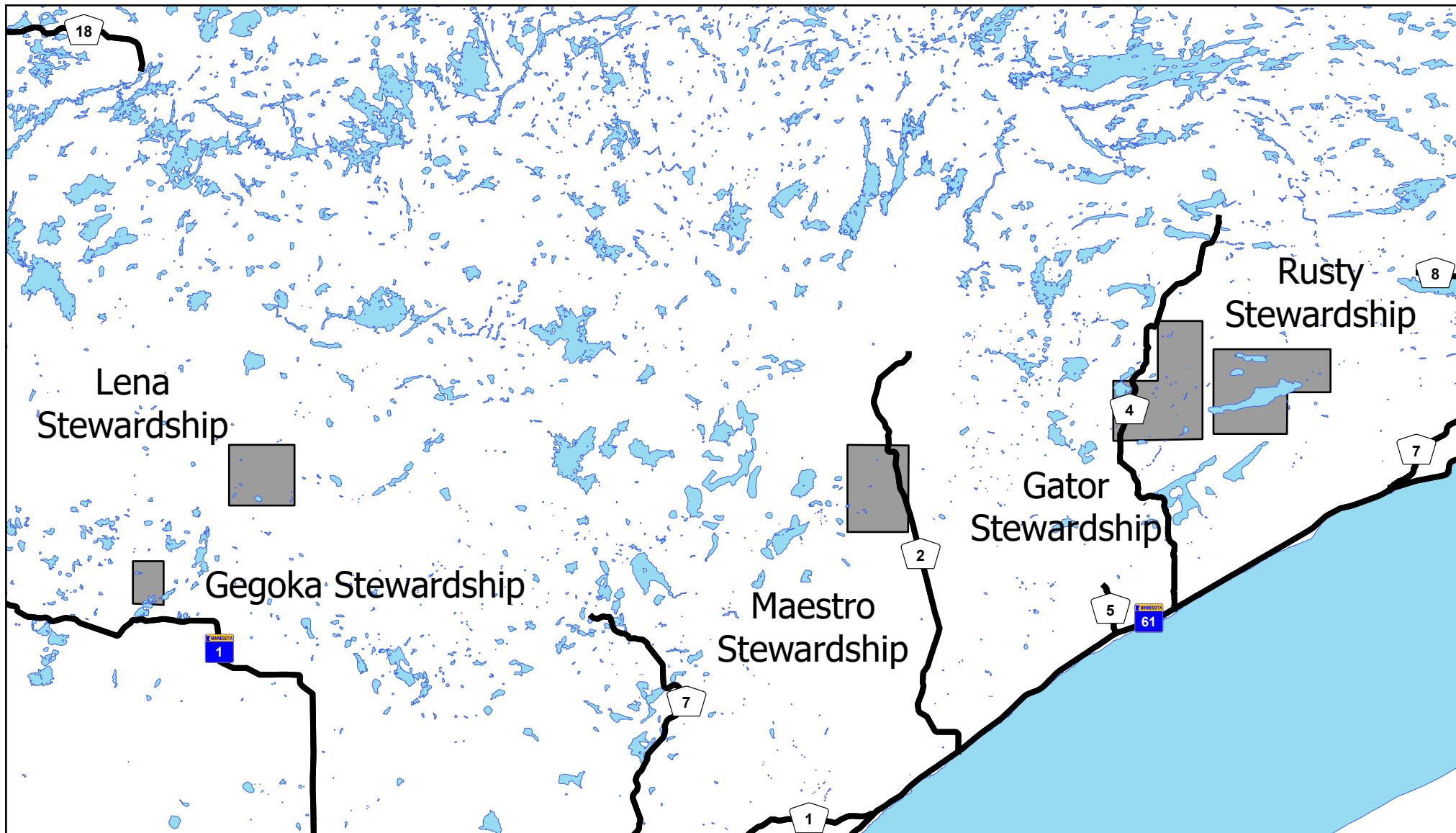
*THOMAS HALL*  
Forest Supervisor

Enclosures

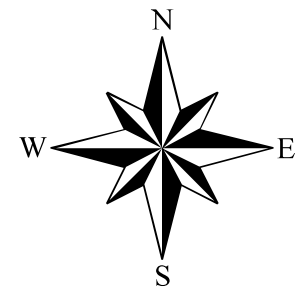
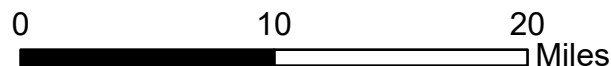
cc: Aaron Kania, Sunny Lucas, Adam Cochran, Ellen Bogardus-Szymaniak, Kyle Stover, Matthew Judd, Darren Buckentin, Adrian Frank, Drew Stroberg, James McFarland, Justin Burkey

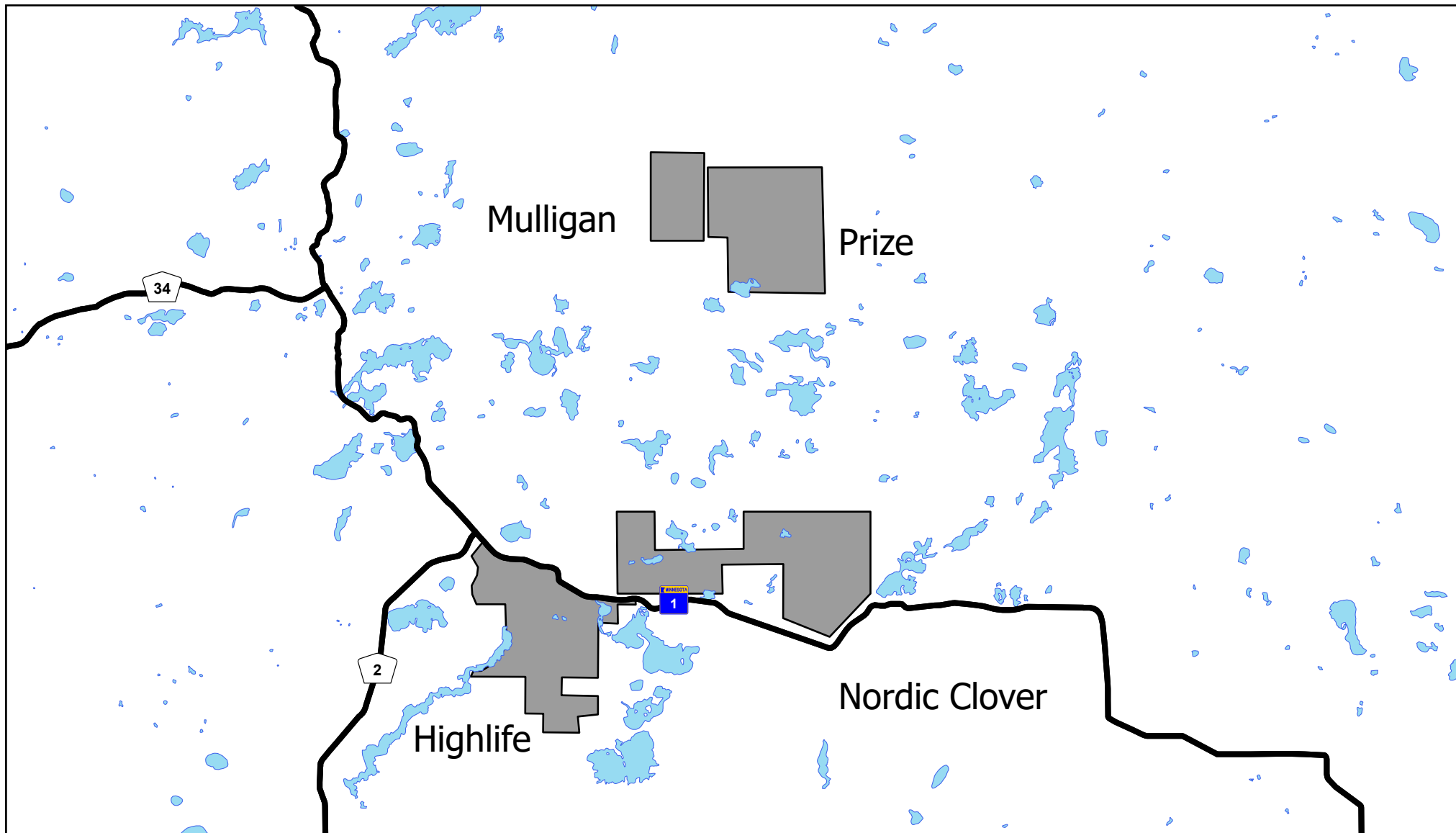
Superior National Forest  
Planned Timber Sale and Stewardship Contracts  
Fiscal Year 2026  
(All Values Are Estimates Only)

District	Sale/Contract Name	Estimated Acres	Estimated Total Volume (MBF)	Aspen (MBF)	Mixed Conifer Sawtimber (MBF)	Mixed Conifer Pulp (MBF)	Mixed Hardwood (MBF)	Percent Summer Operating Season	Planned Month of Advertisement
Gunflint	Rusty Stewardship	450	4,150	800	1,700	1,250	400	50%	August
Kawishiwi	Mulligan	152	1,000	0	300	700	0	25%	September
Kawishiwi	Prize	344	2,800	500	1,200	1,000	100	75%	July
Kawishiwi	Highlife	98	750	250	250	250	0	30%	August
Kawishiwi	Nordic Clover (Scaled)	692	4,745	2,250	965	965	565	75%	August
LaCroix	Gorgeous	350	5,000	3,800	300	150	750	100%	June
LaCroix	Tuke	491	2,500	250	1,000	1,000	250	72%	January
LaCroix	East Crane	320	3,300	3,000	100	100	100	40%	July
Laurentian	Apple Creek Stewardship	196	1,960	1,000	0	960	0	100%	July
Laurentian	Minnow Lake	280	1,400	0	0	1,400	0	100%	August
Laurentian	Magpie (Scaled)	276	3,000	1,200	100	1,600	100	30%	November
Laurentian	Hacker	383	1,800	70	800	800	130	75%	July
Laurentian	Jordan	264	2,650	750	1,000	500	400	30%	June
Laurentian	Birch Knob Stewardship	739	6,800	5,000	0	1,300	500	90%	January
Tofte	Lena Stewardship	375	3,430	515	1,715	1,030	170	70%	April
Tofte	Gegoka Stewardship	350	1,965	175	1,180	590	20	90%	May
Tofte	Maestro Stewardship	350	3,225	800	1,130	1,130	165	20%	July
Tofte	Gator Stewardship	628	6,000	2,400	300	1,500	1,800	30%	June
<b>Total</b>		<b>6,738</b>	<b>56,475</b>	<b>22,760</b>	<b>12,040</b>	<b>16,225</b>	<b>5,450</b>		

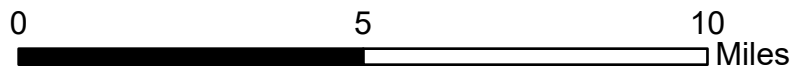
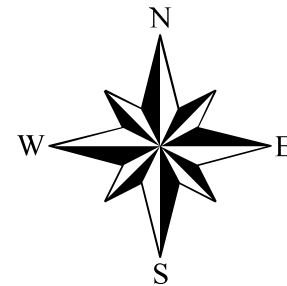


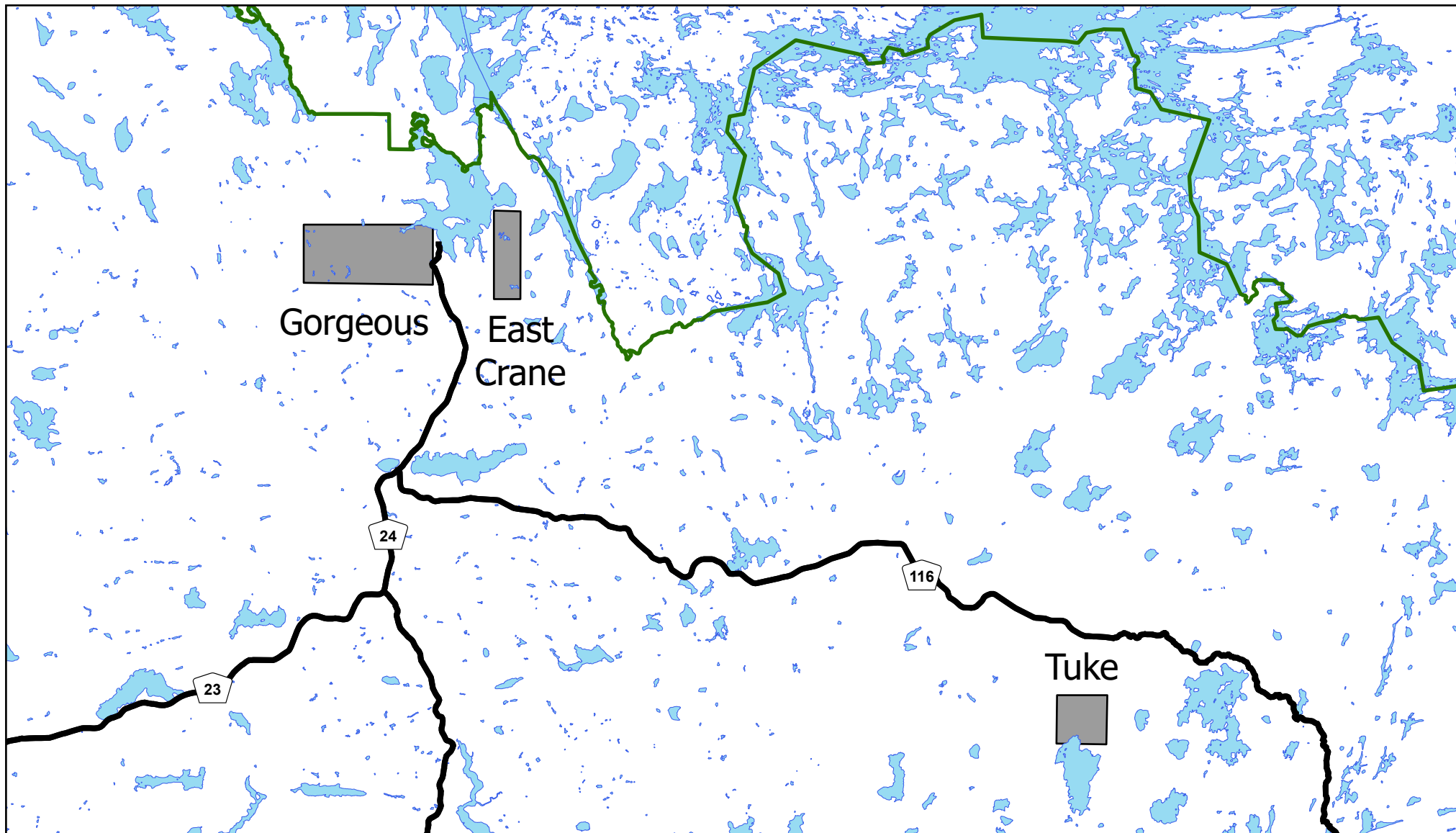
# East Zone Fiscal Year 2026 Sales



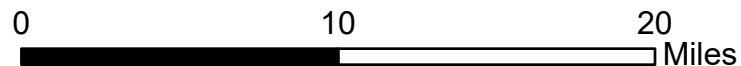
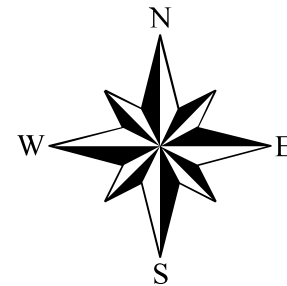


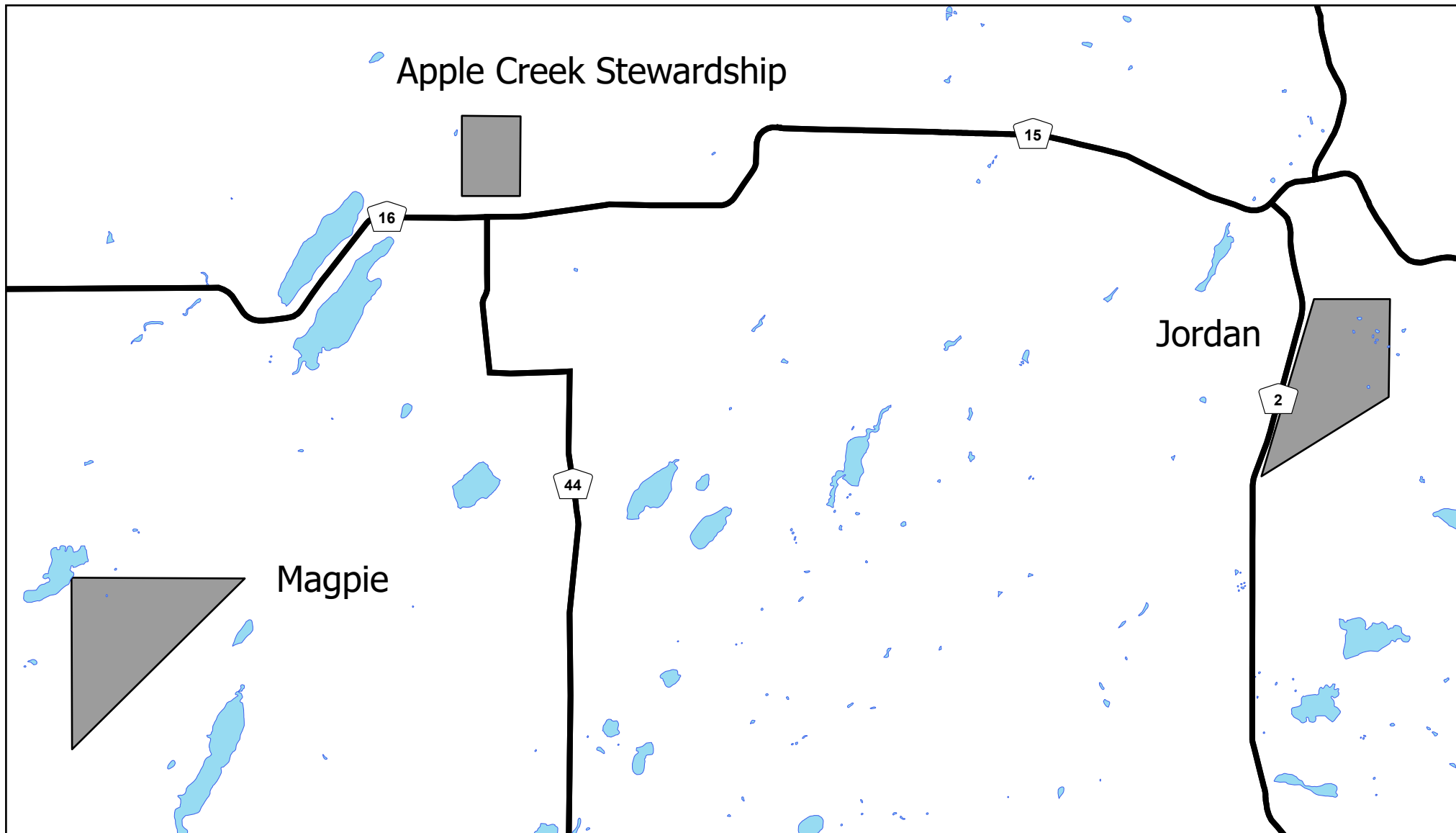
# Kawishiwi Ranger District Fiscal Year 2026 Sales



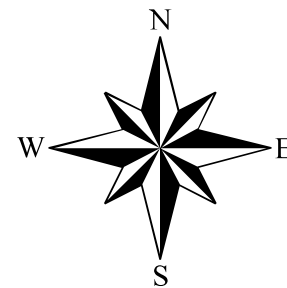
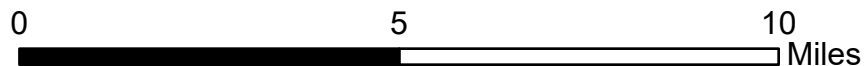


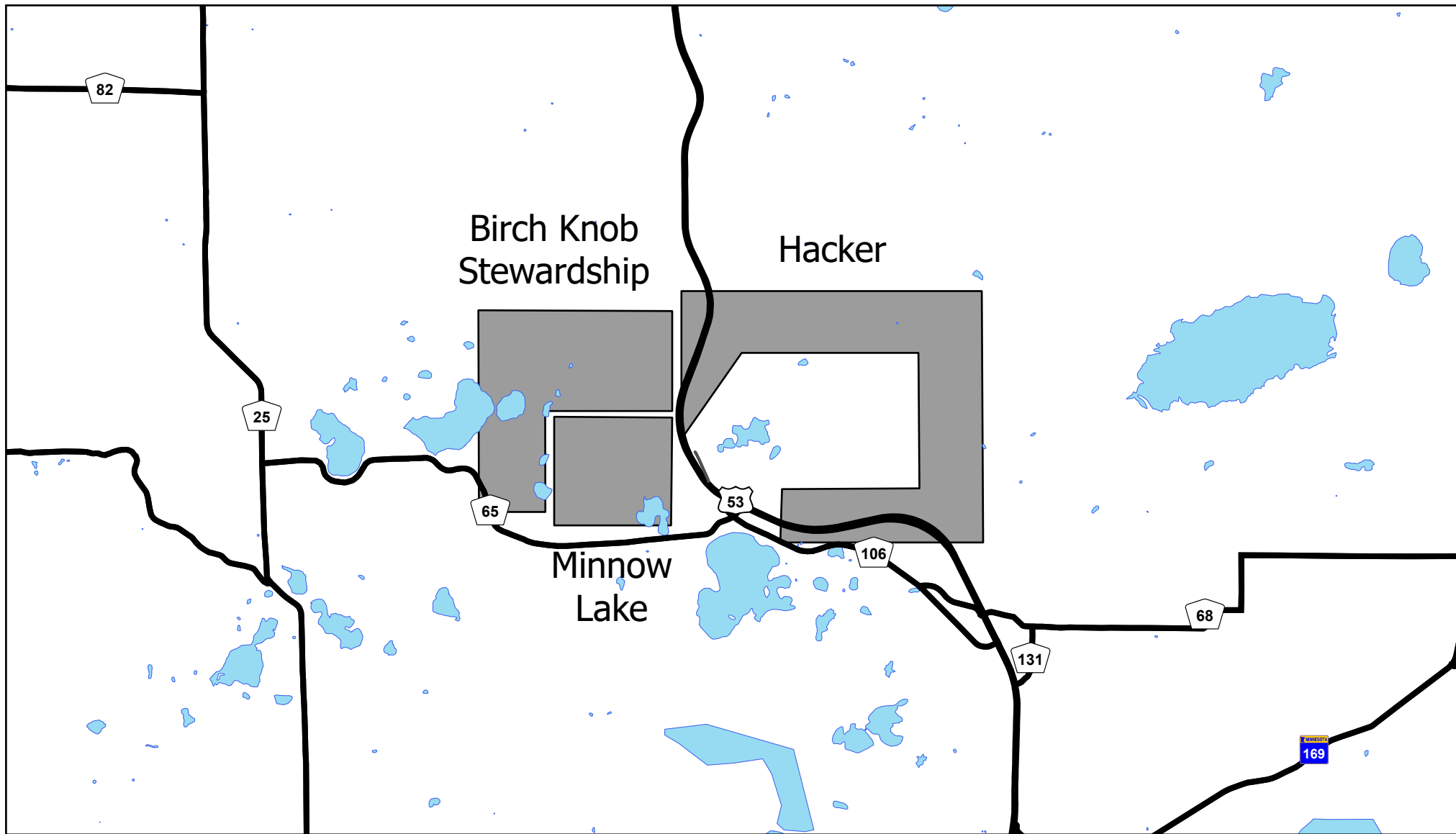
# LaCroix Ranger District Fiscal Year 2026 Sales





# Laurentian Ranger District Fiscal Year 2026 Sales





# Laurentian Ranger District Fiscal Year 2026 Sales

