



Arapaho and Roosevelt National Forests & Pawnee National Grassland | Sulphur Ranger District

Christmas Tree Permits are now on sale through Recreation.gov. Cutting is permitted **Saturday, Nov. 8, 2025– Wednesday, Jan. 7, 2026. Permits must be purchased and printed prior to your trip.**

Federal Rules:

- * Stump height and diameter must be 6 inches or less from the ground
- * Do not top trees, take whole tree
- * Handsaws are best (chainsaws prohibited, battery saws allowed)
- * Do not cut on private lands
- * Cutting is prohibited within the Fraser Experimental Forest, Winter Park/Mary Jane ski areas, and designated wilderness or protected areas
- * No cutting within 75 feet of roads, trails or developed recreation sites



Prepare for your Trip:

- * Traction devices, tow straps, and 4-wheel/all wheel drive vehicles recommended.
- * Recommended equipment: Ice scraper, shovel, flashlight, blanket, water, jumper cables, flares, a rope to safely secure your tree for transport, and a radio for emergencies
- * Remember: cell phones may not work in the mountains
- * Download **Sulphur Ranger District Motor Vehicle Use Map** through Avenza Maps prior to your trip
- * Pack out all trash
- * Weather dependent, gates on seasonal Forest Service Roads will close Nov. 24, 2025.

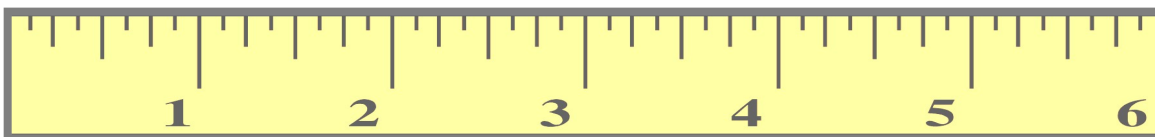


The Elk Creek cutting area will not be open for drive-in tree cutting this year. Walk-in access to the area is still permitted.

Christmas trees can be harvested across the Sulphur Ranger District. The attached maps provide examples of areas that are easily accessible for cutting. Harvesting trees is not limited to the areas shown.

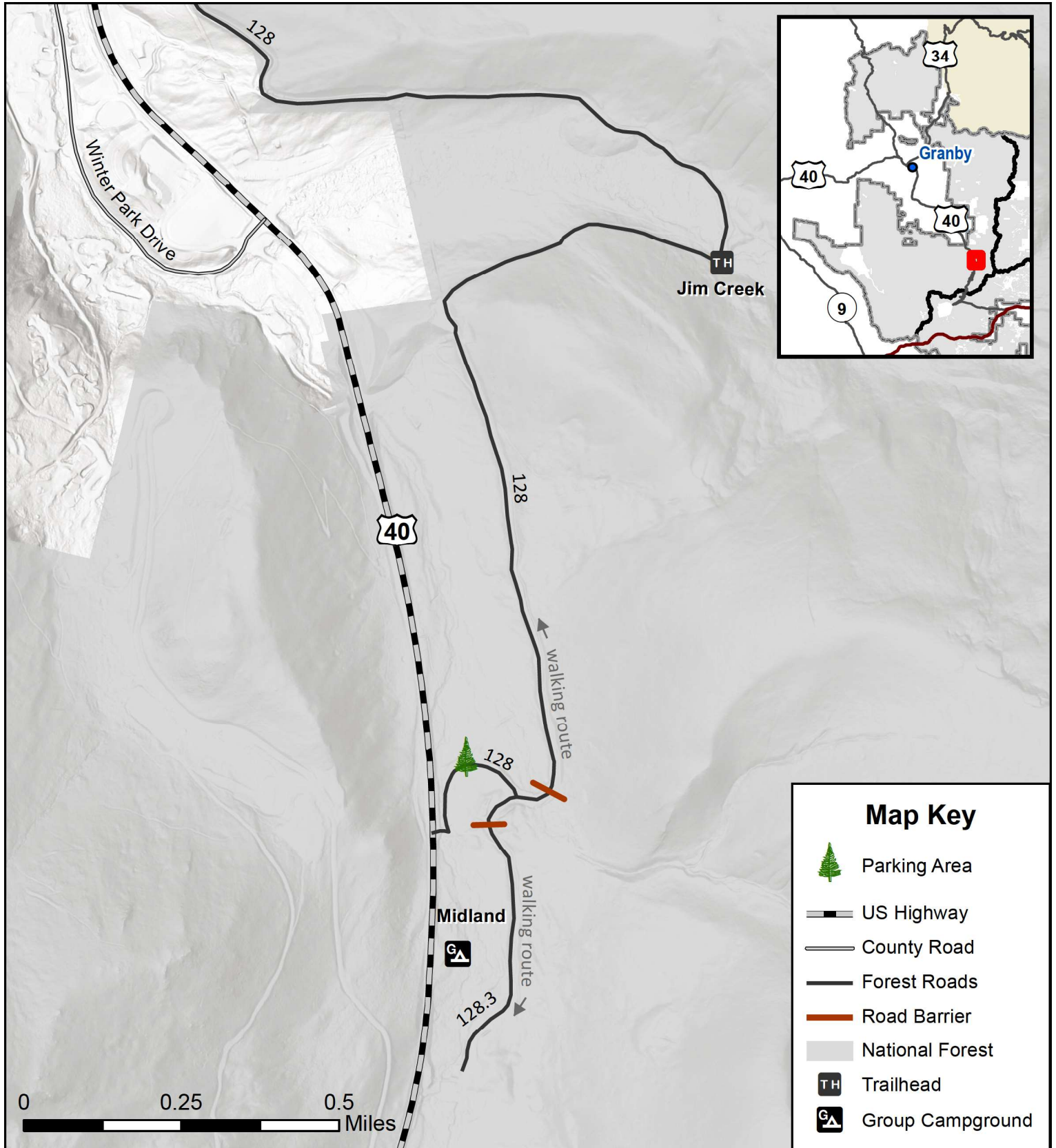
Please consider safety and accessibility when planning your trip.

Cut trees with a stump diameter of 6 inches or less!



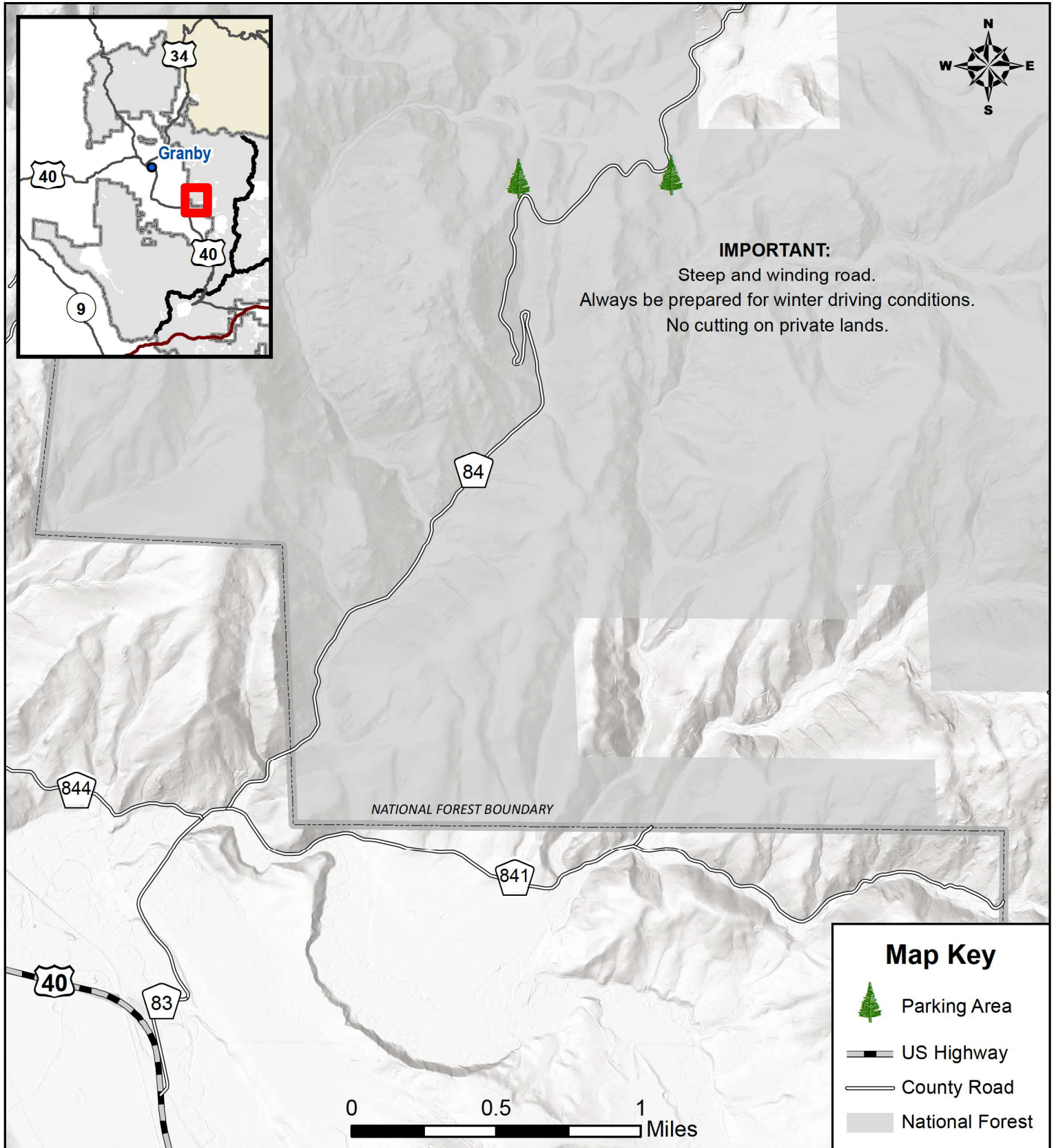


Jim Creek Christmas Tree Cutting



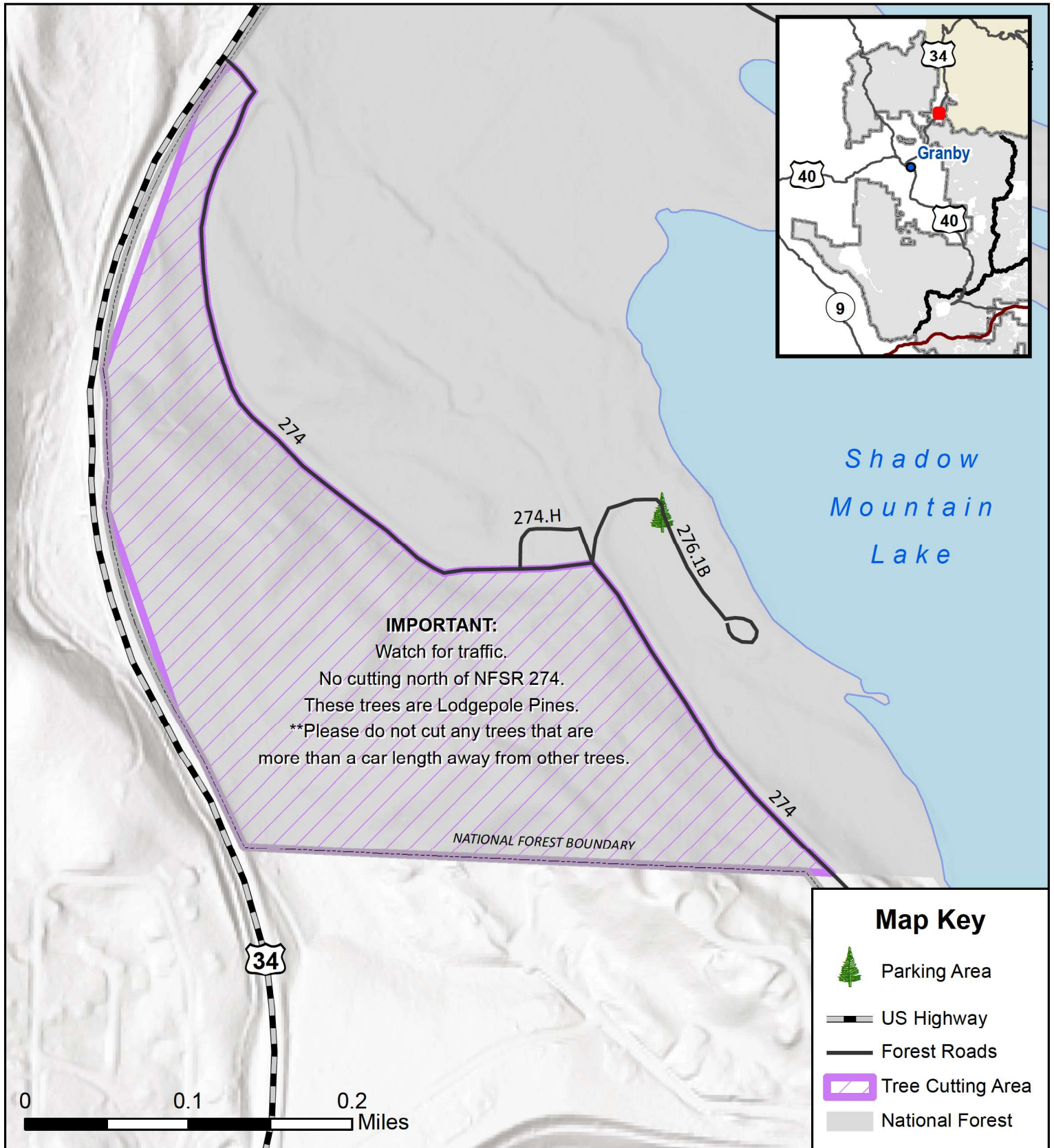


Meadow Creek Christmas Tree Cutting










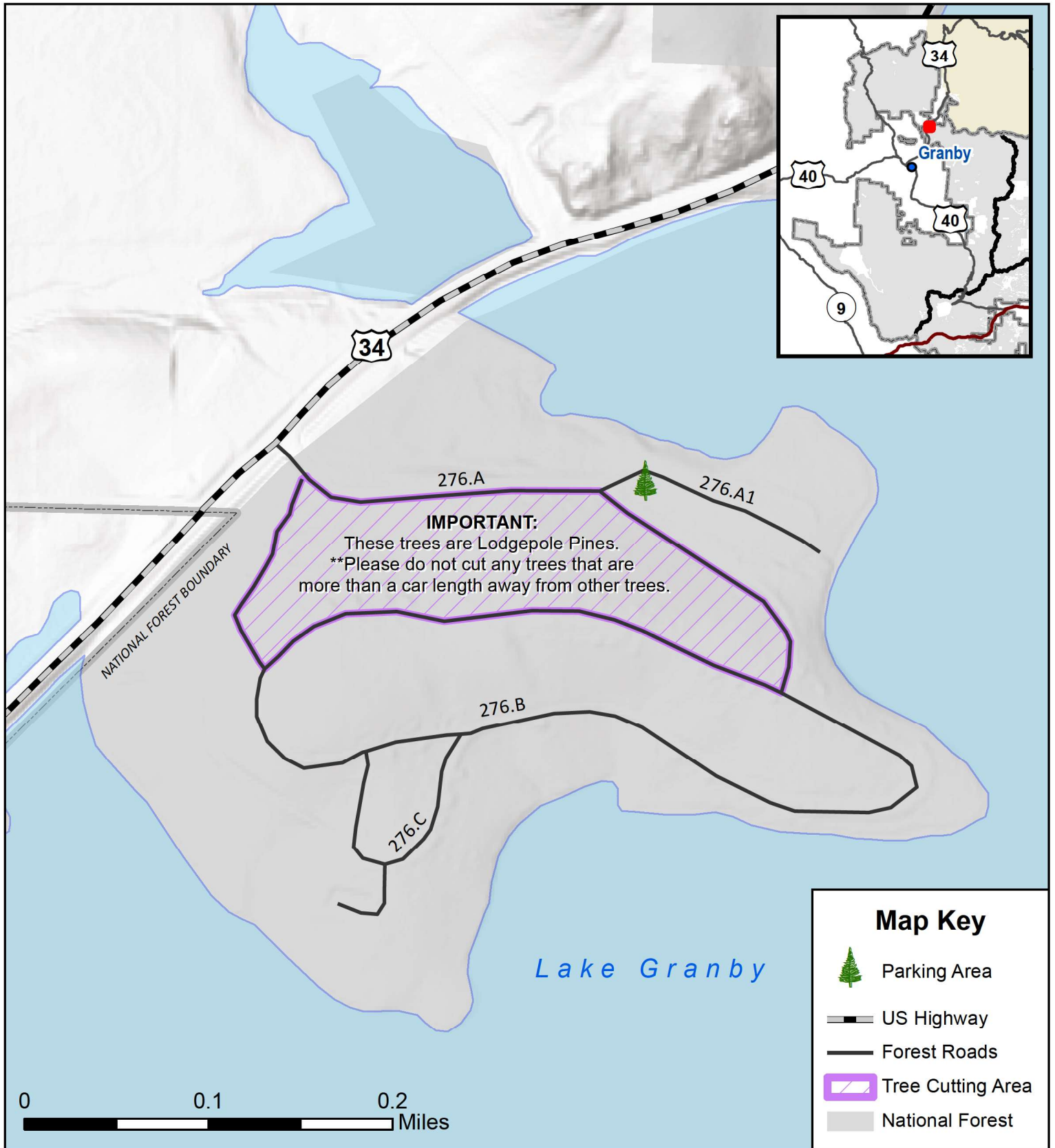
Shadow Mountain Christmas Tree Cutting



Map Key

-  Parking Area
-  US Highway
-  Forest Roads
-  Tree Cutting Area
-  National Forest

Stillwater Campground Christmas Tree Cutting





Willow Creek Pass Christmas Tree Cutting

