

# EXPLORATION OF THE FRENCHY HILL AND WILLOW SPRINGS MINERAL DEPOSITS

DRAKE CEMENT

PREPARED BY:

7G-COMPLIANCE LLC

---

SUBMITTED

SEPTEMBER 19, 2024

REVISED NOVEMBER 20, 2024

REVISED FEBRUARY 25, 2025

REVISED AUGUST 18, 2025

## Contents

1	Introduction.....	1
2	Claims Location .....	1
3	Claims .....	2
5	Project Exploration.....	3
6	Coordinates of Drill Holes.....	5
7	Timeline.....	5
8	Equipment.....	5
9	Reclamation .....	6
10	Environmental Compliance.....	6
11	Sharing of Information .....	6
12	Figures .....	8
1.	General Location Map .....	9
2.	Existing Drake Claims Map.....	10
3.	Drill Hole Locations Overview.....	11
4.	Routes to Drill Hole Locations – Frenchy Hill Area.....	12
5.	Routes to Drill Hole Locations – Willow Springs Area.....	13
13.	Supporting Photos .....	14
	Drilling Equipment .....	14
	Routes FDH04 .....	15
	Routes FDH05 Access .....	16
	Routes FDH06 Access .....	17
	Routes FDH07 Access .....	19
	Routes FDH08 .....	20
	Routes FDH09 .....	21
	Routes FDH10 .....	22
	Routes FDH11 .....	23

## 1 Introduction

Drake is submitting this exploration plan to the Kaibab National Forest to conduct drilling around the existing Frenchy Hill Pozzolan Mine. The drilling is needed to identify the availability and extent of the pozzolan deposit within the existing Drake claims and determine the viability of expanding the Frenchy Hill mining operations.

Responsible Official:

Drake Cement, LLC  
David G. Chavez  
7G-Compliance LLC  
dchavez@drakeus.com

Kaibab National Forest

Debra Mollet  
Williams Ranger District  
Kaibab National Forest  
Coconino County, Arizona

## 2 Claims Location

Drake holds several claims within the area surrounding the existing Frenchy Hill Mine. A state map showing the general location of the project is provided in Figure 1. A Claims Map showing the existing Drake Claims is provided in Figure 2. Areas within the existing claims and this plan are referred to as Frenchy Hill (Drake Claims 1-48), Frenchy Hill North (Drake Claims 49-60), and Willow Springs (WSP 1-8). The following describes the existing claims within each Claims location. Section 3.0 provides the specific information for each claim location covered under this proposed exploration drilling plan.

### **Frenchy Hill.**

Unpatented mining claims and sites located in an unnamed Mining District, specifically in Section 2 of Township 22 North, Range 3 East; and Sections 34 and 35 of Township 23 North, Range 3 East; G&SRM, Coconino County, Arizona, along with the names and instrument numbers of the recorded location notices and any amendments in the official records of the county, as well as the serial numbers assigned by the Arizona State Office of the Bureau of Land Management.

Forty-eight placer mining claims.

## **Willow Springs.**

Unpatented mining claims and sites situated in an unnamed Mining District, in Section 27, Township 23 North, Range 3 East, G&SRM, Coconino County, Arizona, the names of which, together with the instrument numbers of recording of the location notices and amendments to it, in the official records of said county, and the serial numbers assigned by the Arizona State Office of the Bureau of Land Management.

8 placer mining claims.

## **Frenchy Hill North**

Unpatented mining claims and sites situated in an unnamed Mining District, in Sections 26 and 27, Township 23 North, Range 3 East, G&SRM, Coconino County, Arizona, the names of which, together with the instrument numbers of recording of the location notices, and amendments to it, in the official records of said county, and the serial numbers assigned by the Arizona State Office of the Bureau of Land Management.

12 placer mining claims.

## **3 Claims**

The following table lists the names, ID numbers, and BLM Serial numbers of each mining claim on which exploration drilling and associated activities are proposed to be conducted under this plan.

No.	Name of Claim	BLM Serial No.
9	DRAKE 9	BLM 399362
10	DRAKE 10	BLM 399363
11	DRAKE 11	BLM 399364
22	DRAKE 22	BLM 399375
23	DRAKE 23	BLM 399376
24	DRAKE 24	BLM 399377

No.	Name of Claim	BLM Serial No.
1	WSP-1	AZ105749501
2	WSP-2	AZ105749502
3	WSP-3	AZ105749503
4	WSP-4	AZ105749504
5	WSP-5	AZ105749505
6	WSP-6	AZ105749506
7	WSP-7	AZ105749507
8	WSP-8	AZ105749508

## 5 Project Exploration

Based on field reconnaissance and detailed geological review of the claim's areas by Drake personnel, exploration activities are proposed to drill eight (8) boreholes, each ranging from approximately 200 feet to 370 feet. An overview of the proposed drilling locations is illustrated in Figure 3. These boreholes are anticipated to provide essential data to determine the quality and extent of available pozzolan within the Drake claims. They are expected to confirm that the available resources within the Frenchy Hill and Willow Springs mining claims areas are part of the same pozzolanic deposit.

Proposed drill hole locations and access routes were selected to provide necessary information about the deposit while utilizing existing forest roads, secondary previously disturbed two-track roads, and visibly disturbed areas to minimize potential disturbance resulting from the project. Overland travel is proposed at some locations for the drill rig and support equipment (detailed in Section 8.0). A single drill rig will be mobilized to complete drilling for the project one hole at a time. No new roads are proposed to access the site locations. A water truck will have potential fugitive dust from equipment overland travel and proposed drilling operations. The proposed project will comply with federal, state, and local requirements concerning air quality by 36 CFR 228.8(a).

The following paragraphs describe the proposed access route to each drill hole location. Figures 4 – 5 provide an aerial view of the route.

Under this proposed plan, four holes are planned within the Frenchy Hill mining claims area, as shown in Figure 4. Access to these locations will be from the existing Frenchy Hill operations. Access to the Frenchy Pit from the Williams area and specific routes to each proposed drill hole location are as follows.

From the I-40 and the AZ-64N Highway junction near Williams, travel east on I-40 for approximately 5.5 miles and take Exit 171 toward Pittman Valley Rd/Deer Farm Rd. Turn left onto Cool Pines Rd/Pittman Valley Road and travel for 0.2 miles, then turn left onto N Buggy Wheel Rd/CR74. Continue on N Buggy Wheel Rd/CR74 for approximately 3.0 miles and then on FR74, where the pavement ends, for approximately 1.4 miles to the Frenchy Pit access gate.

The following specific routes will be taken from the Frenchy Pit to each proposed drill hole location within the Frenchy Hill Claims area, as shown in Figure 4.

- FHD07 – From the north side of the existing Frenchy Pit and eastern fence line boundary, travel on the previously disturbed two-track road for approximately 300 feet. From this point, the overland travels south approximately 30 feet to access FHD07.
- FHD04 – From the previously disturbed two-track road at FHD07, continue another 460 feet east and south along the existing two-track road to FHD04.
- FHD06 – From the two-track road at FHD04, travel east on the previously disturbed two-track highway for approximately 480 feet. From this point, the overland travels south 20 feet to access FHD06.
- FHD05 – From the two-track road at FHD-06, travel south and west approximately 710 feet to FHD05.

As shown in Figure 5, four holes are planned within the Willow Springs mining claims area under this proposed plan. Access to these locations from the Williams area is as follows:

From the I-40 and the AZ-64N Highway junction near Williams, travel north on AZ-64N for approximately 5.5 miles. Turn right onto E Spring Valley Road and continue for 3.6 miles. Turn left to stay on E Spring Valley Rd and continue for 1.0 miles. Turn right on Forest Road (FR) 2058/74A and continue for 1.8 miles, then veer south for 0.1 miles to the FR2058A and FR74B junction. Specific routes will be taken from this junction to each proposed drill hole location within the Willow Springs Claims area, as shown in Figure 5.

- FDH08 – From the FR2058A/74B junction, veer right to continue on FR2058A for approximately 0.4 miles. From this point, the overland travels to the east for roughly 300 feet to access FDH08.
- FDH09 – From the FR2058A/74B junction, veer right to continue on FR2058A for approximately 0.5 miles, then turn left onto the previously disturbed two-track dirt road and continue for approximately 360 feet to access FDH09.
- FDH10 – From FDH09 overland, travel approximately 450 feet to the southeast to access FDH10.
- FDH11 – From the FR2058A/74B junction, veer left to continue on FR74B for approximately 0.2 miles. From this point, the overland travels to the southwest for roughly 45 feet to access FDH11.

## 6 Coordinates of Drill Holes

ID	Latitude	Longitude	Estimated Drill Hole Depth
FDH08	35.341641°	-112.064521°	200
FDH09	35.339561°	-112.063986°	200
FDH10	35.338730°	-112.062858°	200
FDH11	35.341296°	-112.060722°	220
FHD04	35.325658°	-112.043118°	370
FHD05	35.324467°	-112.042620°	200
FHD06	35.325627°	-112.041565°	240
FHD07	35.326155°	-112.043839°	240

## 7 Timeline

Each drill hole is expected to take one to three days, depending on the material, depth, and number of samples collected. It is anticipated that the proposed drilling project will take approximately four weeks to complete. Drilling efforts will take place on weekdays and weekends to ensure the project is completed within the proposed timeframe. As a contingency for potential unforeseen delays due to equipment breakdowns or other unexpected issues, Drake anticipates that the drilling efforts will not exceed two months. Drake will notify the Forest Service of any delays that happen outside this proposed timeline.

Upon completion of exploration, the reclamation procedures outlined in Section 9.0 will be followed, and all equipment will be removed from the area.

## 8 Equipment

The project will utilize one floatation tire diamond drill truck equipped with spark arrestors and fire extinguishers. A drill pipe trailer and other support vehicles, including trucks and/or cars used for individual supervision, quality control, and mechanical support personnel, will also support the drill rig.

A water truck will be available for dust control as needed. The site's water supply will come from local water distributors. Additionally, no temporary structures will be

required. The total workforce expected on-site at any one time will consist of five (5) to eight (8) individuals.

Sanitation facilities will be located at the existing Frenchy Quarry, and fuel and oil will be stored at the Frenchy Hill site, which is equipped with security cameras. Under the proposed exploration drilling program, all associated activities will be conducted according to the current Spill Prevention, Control, and Countermeasure (SPCC) Plan procedures.

Upon project completion, all equipment will be removed from the site.

## 9 Reclamation

The Environmental Impact Statement for the Integrated Treatment of Noxious or Invasive Weeds (2004) prepared by the Kaibab National Forest delineates specific methodologies for preventing the establishment and dissemination of invasive weeds. Among these methodologies, it is stipulated that all equipment must be thoroughly cleaned before being relocated to new sites. Drake contractors and personnel will adhere to these procedures and ensure equipment is cleaned before mobilizing to the project site.

The United States Forest Service requires that all drill holes be filled and restored following each use. Furthermore, all material extracted from the drill holes, except the portion utilized for sampling, shall be replaced and properly compacted back into the holes.

Any new disturbance from the proposed exploration drilling within the affected area will be recontoured to align with the surrounding landscape and reseeded as necessary. Any reseeded efforts will be conducted using a Forest Service-approved seed mix.

## 10 Environmental Compliance

It is imperative that the area be cleaned and free of debris and materials before all equipment is removed. Drake will comply with all applicable Federal, State, and Local air quality regulations. A water truck will control fugitive dust from vehicle and equipment travel and drilling operations. For equipment refueling, the current SPCC plan for Frenchy Hill operations will be followed. No other specific federal, state, or local permits are required for the proposed exploration drilling outlined under this plan.

## 11 Sharing of Information

Drake Cement and the Kaibab National Forest have reached a mutual agreement regarding the commencement of drilling operations. Upon the initiation of these



operations, sample collection will be performed to facilitate shared analysis between both parties. It is imperative to emphasize that drilling activities shall commence only after the two parties have collaboratively determined the specific dates and times for such operations.

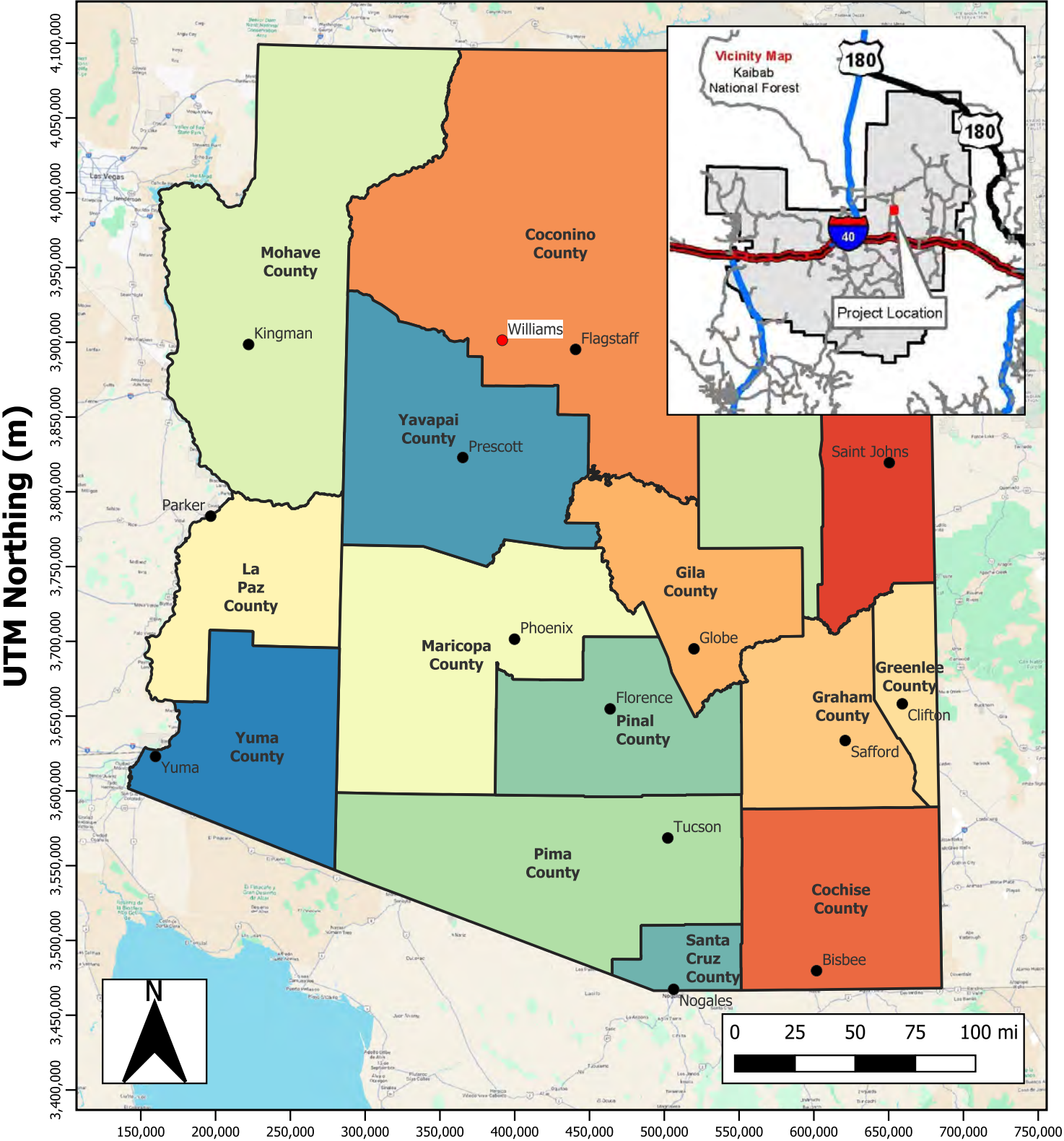
DRAFT

DRAFT

## 1. General Location Map

DRAFT

Figure 1. General Location Map



**UTM Easting (m)**  
All Coordinates in UTM Coordinates,  
Zone 12N, NAD 1983

Source: US Census Bureau Counties Boundary File (2024)  
Google Maps (2025)

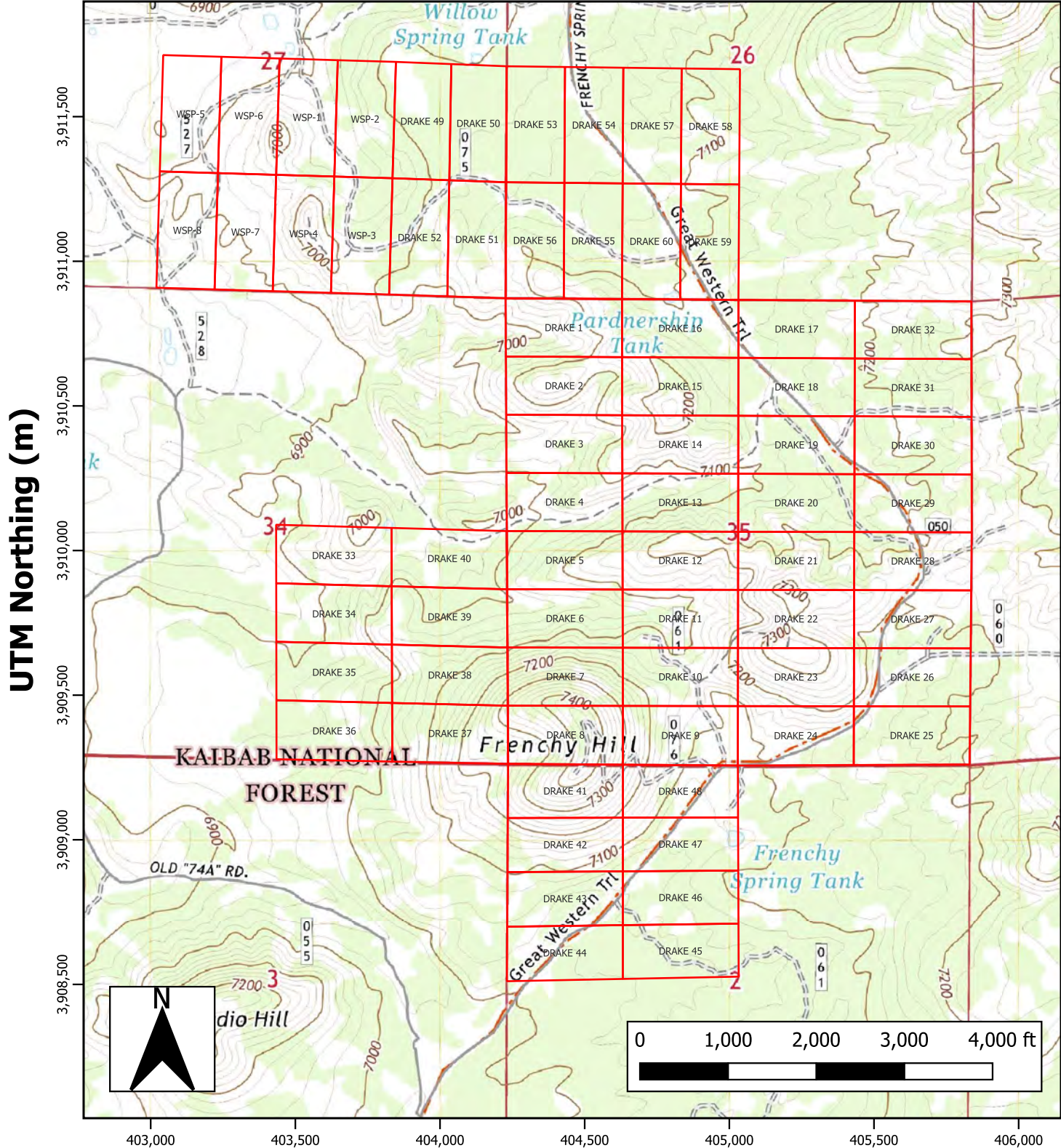


## 2. Existing Drake Claims Map

DRAFT



Figure 2. Drake Claims Map



UTM Easting (m)

All Coordinates in UTM Coordinates,  
Zone 12N, NAD 1983

Source: AZ Sitgreaves Mountain 24k Topo (2021)



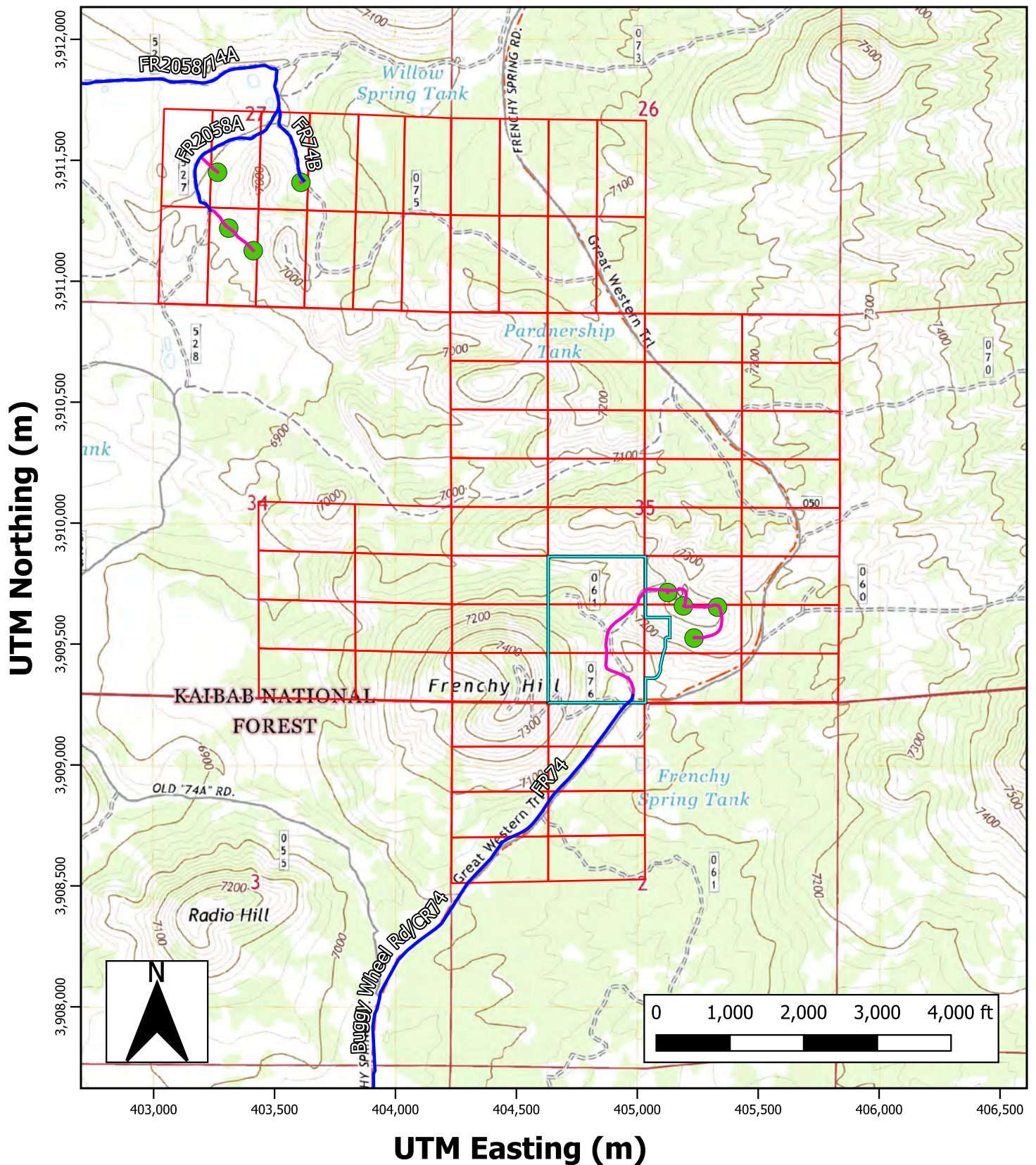
August 2025

### 3. Drill Hole Locations Overview

DRAFT



# Figure 3. Drill Hole Locations Overview



All Coordinates in UTM Coordinates,  
Zone 12N, NAD 1983

Source: AZ Sitgreaves Mountain 24k Topo (2021)



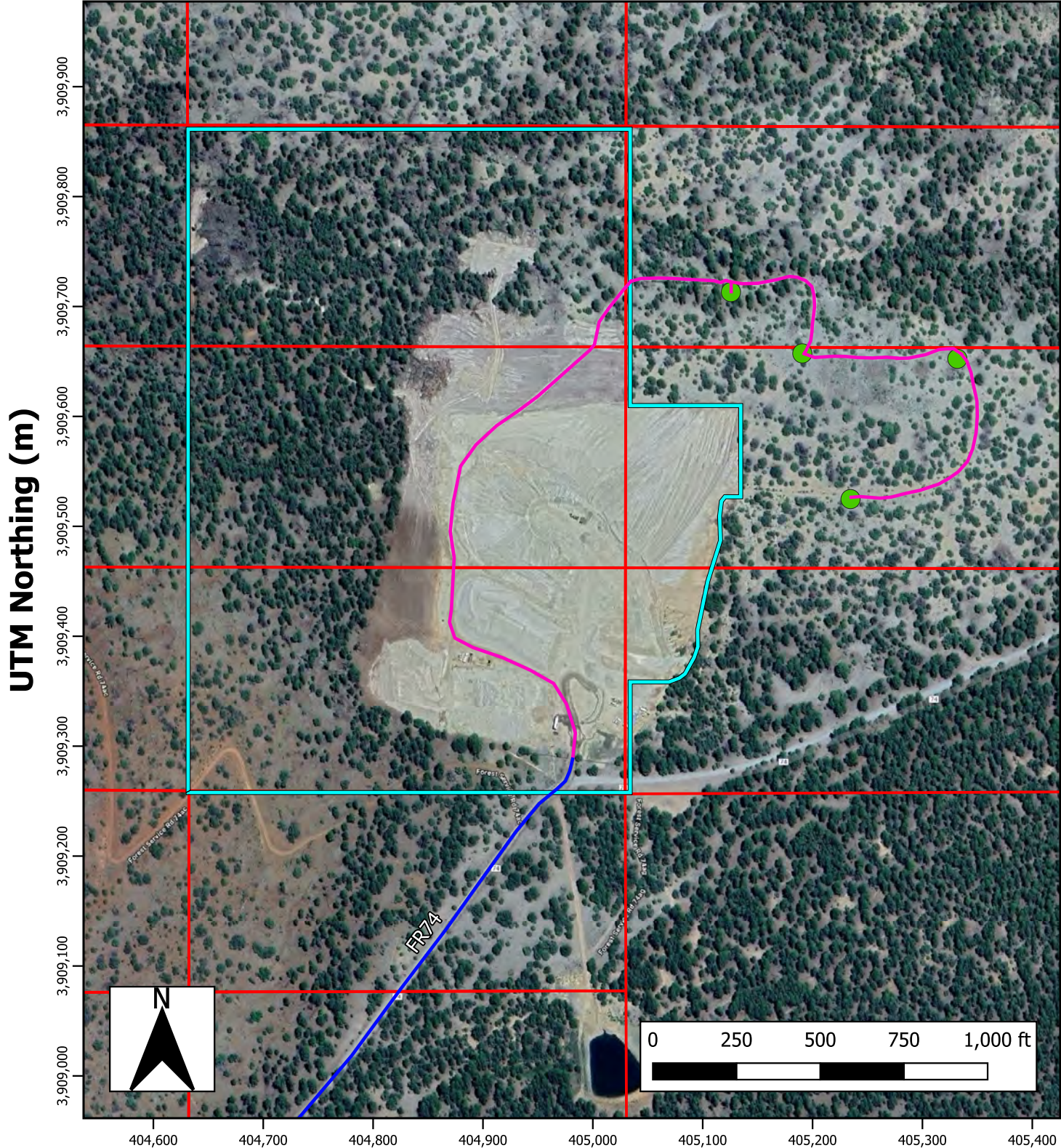
August 2025



#### 4. Routes to Drill Hole Locations – Frenchy Hill Area

DRAFT

Figure 4. Frenchy Hill Area Drill Locations and Access



**Legend**

- Proposed Drill Hole Locations
- Existing Forest Roads Route
- Access Routes
- Frenchy Pit Mine Boundary
- Drake Claims Boundary

All Coordinates in UTM Coordinates,  
Zone 12N, NAD 1983  
Source: Google Earth Imagery (06/03/2024)

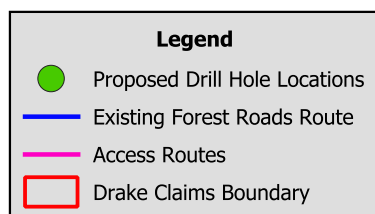
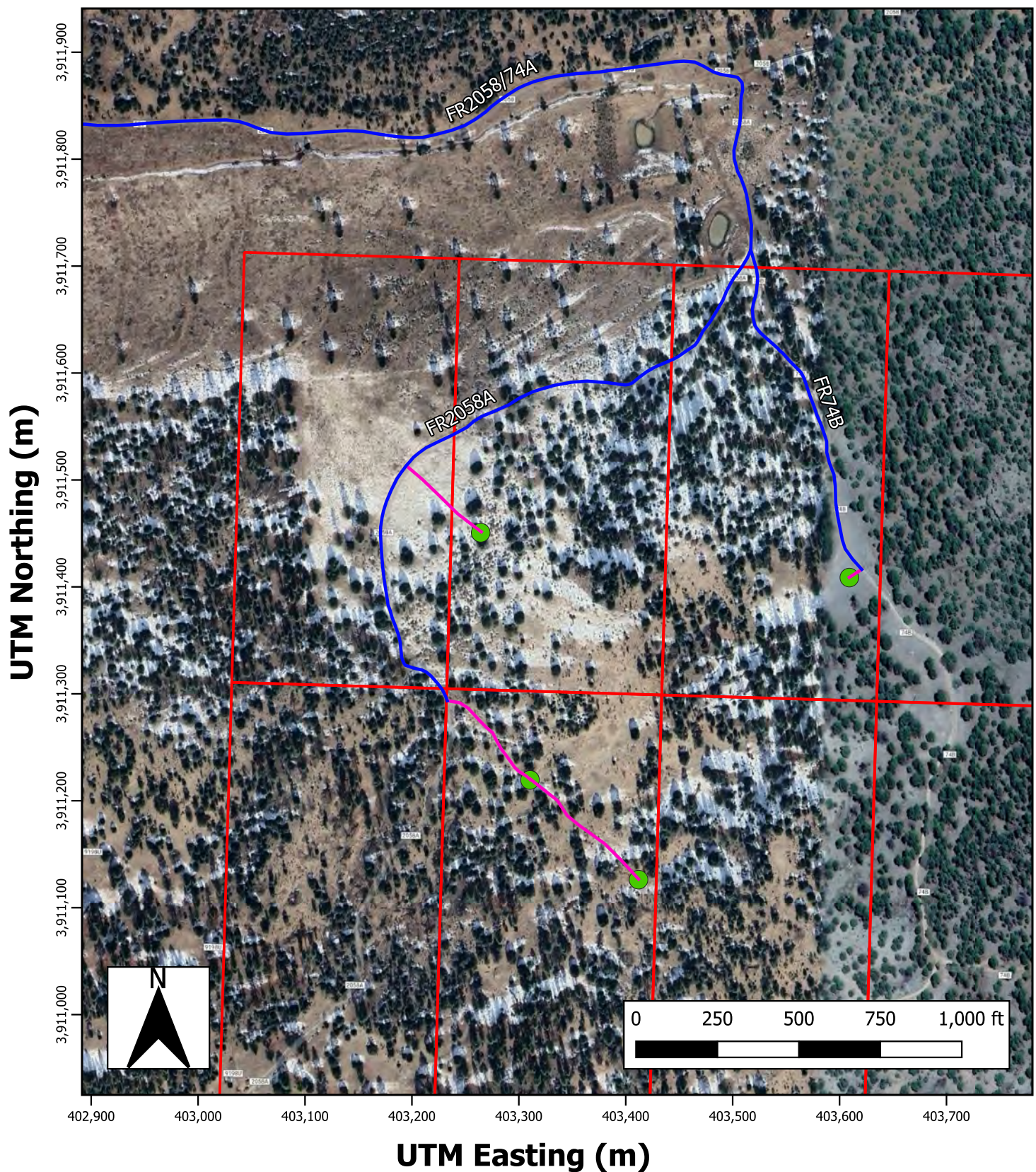


## 5. Routes to Drill Hole Locations – Willow Springs Area

DRAFT



# Figure 5. Willow Springs Area Drill Locations and Access



All Coordinates in UTM Coordinates,  
Zone 12N, NAD 1983

Source: Google Earth Imagery (06/03/2024)



August 2025



### 13. Supporting Photos

#### Drilling Equipment





































