



File Code: 1920**Date:** December 01, 2025**Route To:****Subject:** CRNG Management Area Correction due to a Mapping Error – Revise Old Growth Juniper Parcel Boundary where it Overlaps a Utility Corridor**To:** Jennifer Abernathy and Ella Rowan, Ochoco National Forest and Crooked River National Grassland NEPA Planning Staff

This Letter to the File documents a clerical map change for the Crooked River National Grassland (CRNG) Land and Resources Management Plan (LRMP) due to a mapping error that occurred when the LRMP was adopted in 1989. This correction is needed because an Old Growth Juniper Management Area parcel currently overlaps with an Utility Corridor Management Area. These two Management Areas have conflicting management standards and guidelines that cannot be resolved through project design criteria when projects alter vegetation and other characteristics. This mapping error and the outcome of the map edits will not result in the removal of any existing old growth juniper trees or old growth juniper habitat.

Background

The LRMP requires at least 740 acres of Old Growth Juniper Management Area designation on the CRNG. These acres should be spread across 15 separate parcels within approximately 5 miles of each other, and each parcel should be at least 40 acres in size (some 40-acre parcels may be composed of scattered stands as small as five acres in size located no more than 1/8 mile apart). There are currently approximately 824.4 acres with an average parcel size of 58.9 acres (median 43.6, range 22.5 – 162.3) present on the CRNG. An 82.6-acre Old Growth Juniper Management Area parcel (MA-G5) overlaps a Utility Corridor (MA-G16) and was not recognized when the LRMP was approved due to inaccurate maps for the corridor and buffer boundaries at the time. This Letter to the File will correct the mapping error by adjusting the Old Growth Juniper parcel boundary and reclassifying 50.4 acres, primarily from the southern half and eastern ¼ of the parcel, to the General Forage Management Area category which allows for Utility Corridor overlap (Figure 2). This change will still retain 774-acres of Old Growth Juniper with an average parcel size of 55.3 acres (median 40.3, range 22.5 – 162.3).

This change in boundary and management area designation will entail a Geographic Information System (GIS) exercise to identify the new accurate location for the southern and eastern boundaries for the Old Growth Juniper parcel and a change of management area category from Old Growth Juniper in the southern half of the parcel to General Forage. No change in language will be needed in the LRMP, nor will LRMP maps need to be changed because the figures are already inaccurate. We currently use GIS data to identify Management Area boundaries, which will be adjusted by our USDA Forest Service Enterprise DRM staff to ensure the formal files are corrected. Recategorizing the excised portion of the parcel to General Forage with an overlapping Utility Corridor designation will not cause any foreseeable concerns.



The Old Growth Juniper parcel has been managed as a utility corridor since at least 1956 when powerline structures were permitted. The parcel is just east of Round Butte Dam, which completed construction in 1965 with the recognition electric utility facilities and corridors would be present on Round Butte. The LRMP was adopted in 1989, over 30 years after electric utility infrastructure had been installed. Numerous permits allowing for utilities have been granted over the decades. This location has been managed as a utility corridor and currently contains electric utility poles and an access road leading from a substation to the south on Round Butte (Figure 3).

Project Location

The Old Growth Juniper parcel is located approximately 9 miles west of the city of Madras in Jefferson County, Oregon. It sits on the north side of Round Butte, just east of Lake Simtustus. It is located in Township 11S, Range 12E and Section 23, just west of SW Mountain View Drive and north of SW Riverview Drive. Figure 1 below shows the location of the old growth parcel relative to the larger landscape. Figure 2 on the following page shows the current size and boundaries for the Old Growth Management Area parcel with the overlapping Utility Corridor and proposed polygon to reclassify as General Forage.



Figure 1. Old Growth Juniper parcel (red star) location west of the city of Madras, Oregon.

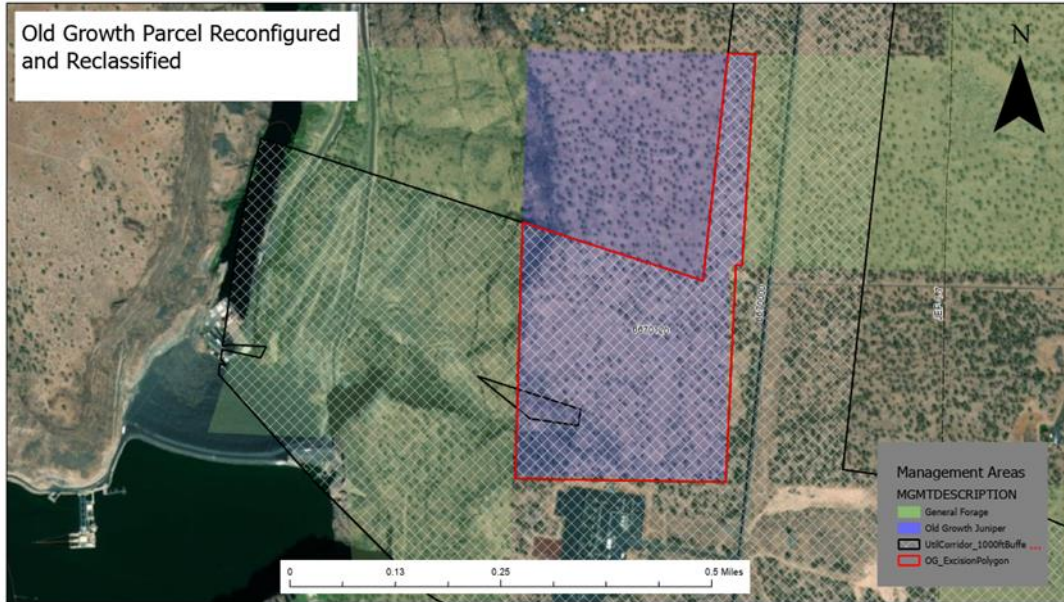


Figure 2. Old Growth Juniper Management Area parcel will be reduced by 50.4-acres (red excision polygon) where it overlaps the Utility Corridor. The excision polygon will be reclassified as General Forage Management Area.



Figure 3. Old Growth Juniper Management Area excision polygon showing existing access road where powerline structures currently exist within the utility corridor.

Changes presented do not require further evaluation through a NEPA Categorical Exclusion, Environmental Assessment or Environmental Impact Statement. The mapping error is determined to not be significant and will match the existing infrastructure identified during the inception of the 1989 LRMP. These edits will be formally rectified at a later date when a formal LRMP revision occurs (date to be determined).

The Code of Federal Regulations (CFR) allows for minor clerical errors within a LRMP to be rectified at a later date through an administrative change. The CFR which would allow for the correction of the mapping error and Management Area designation error reads as follows (<https://www.ecfr.gov/current/title-36/chapter-II/part-219>):

36 CFR § 219.13 - Plan amendment and administrative changes

(c) ***Administrative changes.*** An administrative change is any change to a plan that is not a plan amendment or plan revision. Administrative changes include corrections of clerical errors to any part of the plan, conformance of the plan to new statutory or regulatory requirements, or changes to other content in the plan ([§ 219.7\(f\)](#)).

(2) All other administrative changes may be made following public notice ([§ 219.16\(c\)\(6\)](#)).

36 CFR § 219.16 Public notifications. The following public notification requirements apply to plan development, amendment, or revision. Notifications may be combined where appropriate.

(c) ***How public notice is provided.*** The responsible official should use contemporary tools to provide notice to the public. At a minimum, all public notifications required by this part must be posted online, and:

(6) Additional public notice of administrative changes, changes to the monitoring program, opportunities to provide information for assessments, assessment reports, monitoring evaluation reports, or other notices not listed in paragraph (a) of this section may be made in any way the responsible official deems appropriate.

Supporting documentation is located in the project file available at the Ochoco National Forest Headquarters in Prineville, Oregon. The LRMP changes described may proceed upon signing.

JEFFREY MARSZAL
Forest Supervisor

cc: Slater Turner, District Ranger; Heather Jackson, Special Uses Coordinator; Sarah Kaschmitter, Forest Silviculturist