

2026 Post & Stay Map - Williams Ranger District

This permit allows you to cut the following material:

No limit on the size of dead downed material.

**Juniper:** Any live or dead juniper within **30 feet** of an open road that is less than **11 inches** in diameter measured **6 inches** above the ground. If any stem is **greater than 11 inches** you CANNOT cut any part of that tree.

**Ponderosa Pine:** Cutting ponderosa is NOT allowed.

**Pinyon Pine:** Cutting pinyon is NOT allowed.

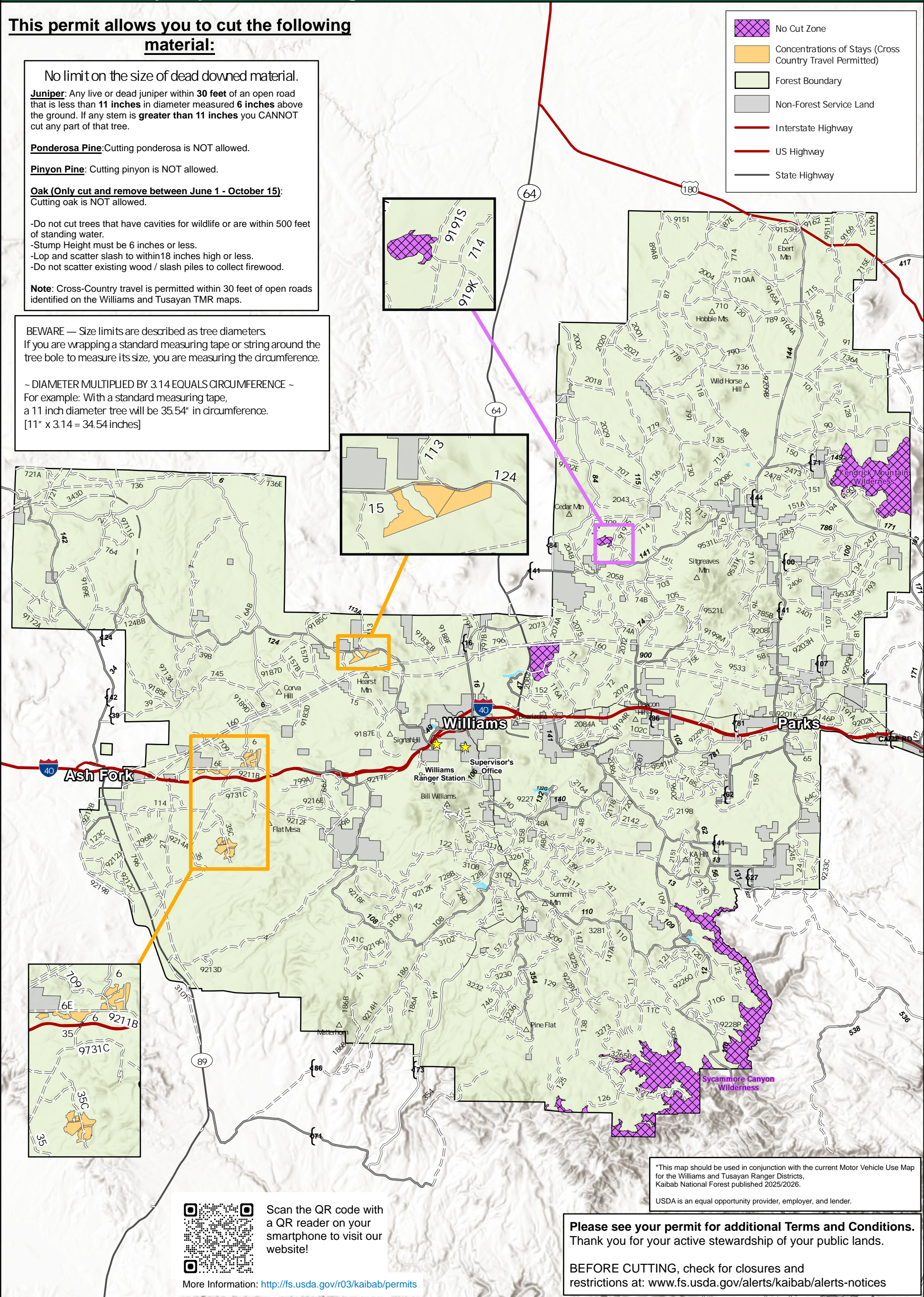
**Oak (Only cut and remove between June 1 - October 15):** Cutting oak is NOT allowed.


-Do not cut trees that have cavities for wildlife or are within 500 feet of standing water.  
-Stump Height must be 6 inches or less.  
-Lop and scatter slash to within 18 inches high or less.  
-Do not scatter existing wood / slash piles to collect firewood.

**Note:** Cross-Country travel is permitted within 30 feet of open roads identified on the Williams and Tusayan TMR maps.

BEWARE — Size limits are described as tree diameters. If you are wrapping a standard measuring tape or string around the tree bole to measure its size, you are measuring the circumference.

~ DIAMETER MULTIPLIED BY 3.14 EQUALS CIRCUMFERENCE ~  
For example: With a standard measuring tape, a 11 inch diameter tree will be 35.54" in circumference.  
[11" x 3.14 = 34.54 inches]





Scan the QR code with a QR reader on your smartphone to visit our website!

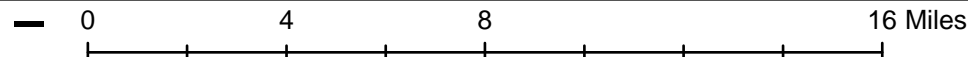
More Information: <http://fs.usda.gov/r03/kaibab/permits>

\*This map should be used in conjunction with the current Motor Vehicle Use Map for the Williams and Tusayan Ranger Districts, Kaibab National Forest published 2025/2026.

USDA is an equal opportunity provider, employer, and lender.

Please see your permit for additional Terms and Conditions. Thank you for your active stewardship of your public lands.

BEFORE CUTTING, check for closures and restrictions at: [www.fs.usda.gov/alerts/kaibab/alerts-notice](http://www.fs.usda.gov/alerts/kaibab/alerts-notice)



NAD 1983 UTM Zone 12N

USDA is an equal opportunity provider, employer and lender

This product is reproduced from geospatial information prepared by the USDA Forest Service. Geospatial information and GIS product accuracy may vary. Using GIS products for purposes other than those for which they were created may yield inaccurate or misleading results. USDA Forest Service reserves the right to correct, update, modify or replace GIS products without notification

Data Sources: USDA - USFS