



Forest Service  
U.S. DEPARTMENT OF AGRICULTURE

January 27, 2026

Welcome!

San Antonio Canyon / Mt. Baldy  
Visitor Management Strategy

---

Angeles National Forest

Public Meeting

# San Antonio Canyon/ Mt Baldy Visitor Management Strategy



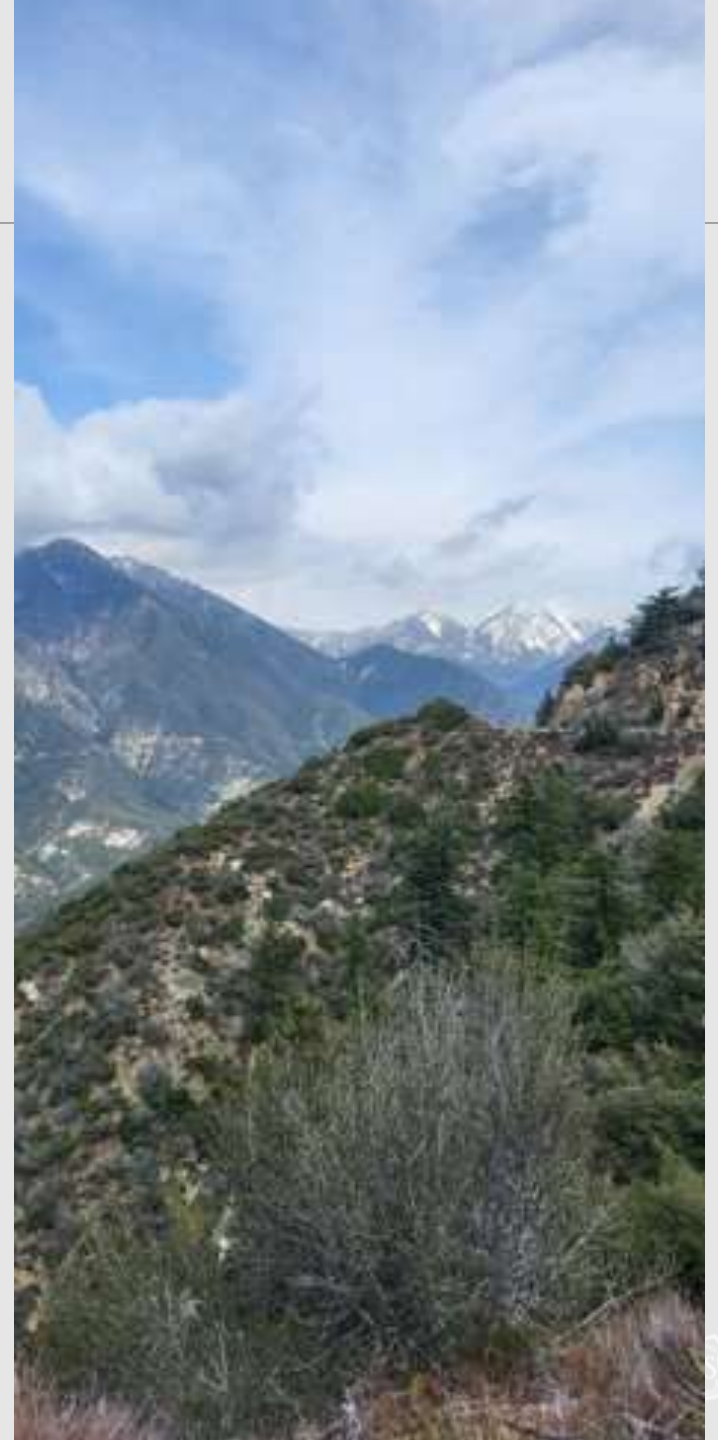
The Angeles National Forest is developing a strategy to address recreation and visitor use concerns on national forest system lands in San Antonio Canyon that are primarily accessed from Mt. Baldy Road.

We are in a key stage of development, and we want to hear **your** thoughts and ideas.

# What is visitor use management planning?

---

- **Proactively plan** for visitor use
- **Sustain** natural and cultural **resource conditions** and quality of **visitor experiences**
- Identify **education, engineering, and/or enforcement** management actions to manage visitor use and settings.
- **Examples:**
  - Develop a trailhead
  - Put educational information on a website
  - Increase volunteer presence



# Project Purpose

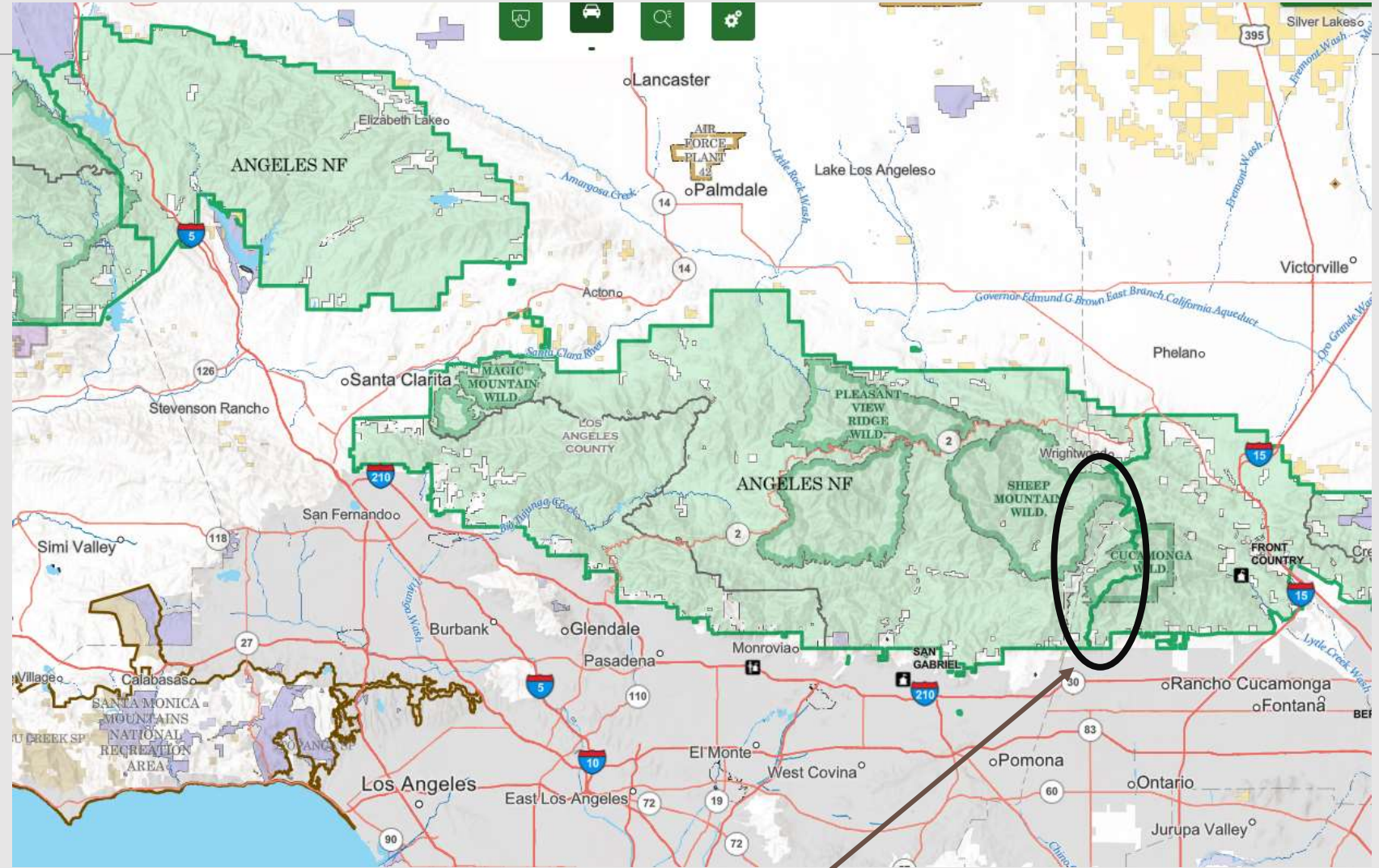
---

- **Respond** to increased visitation and safety concerns
- **Provide** high-quality outdoor recreation experiences
- **Protect** natural and cultural resources by reducing resource degradation
- **Balance** stakeholder interests and collaboration across jurisdictions
- **Generate strategies and actions** to ensure that this special place persists for current and future generations



# Angeles National Forest

## Vicinity Map

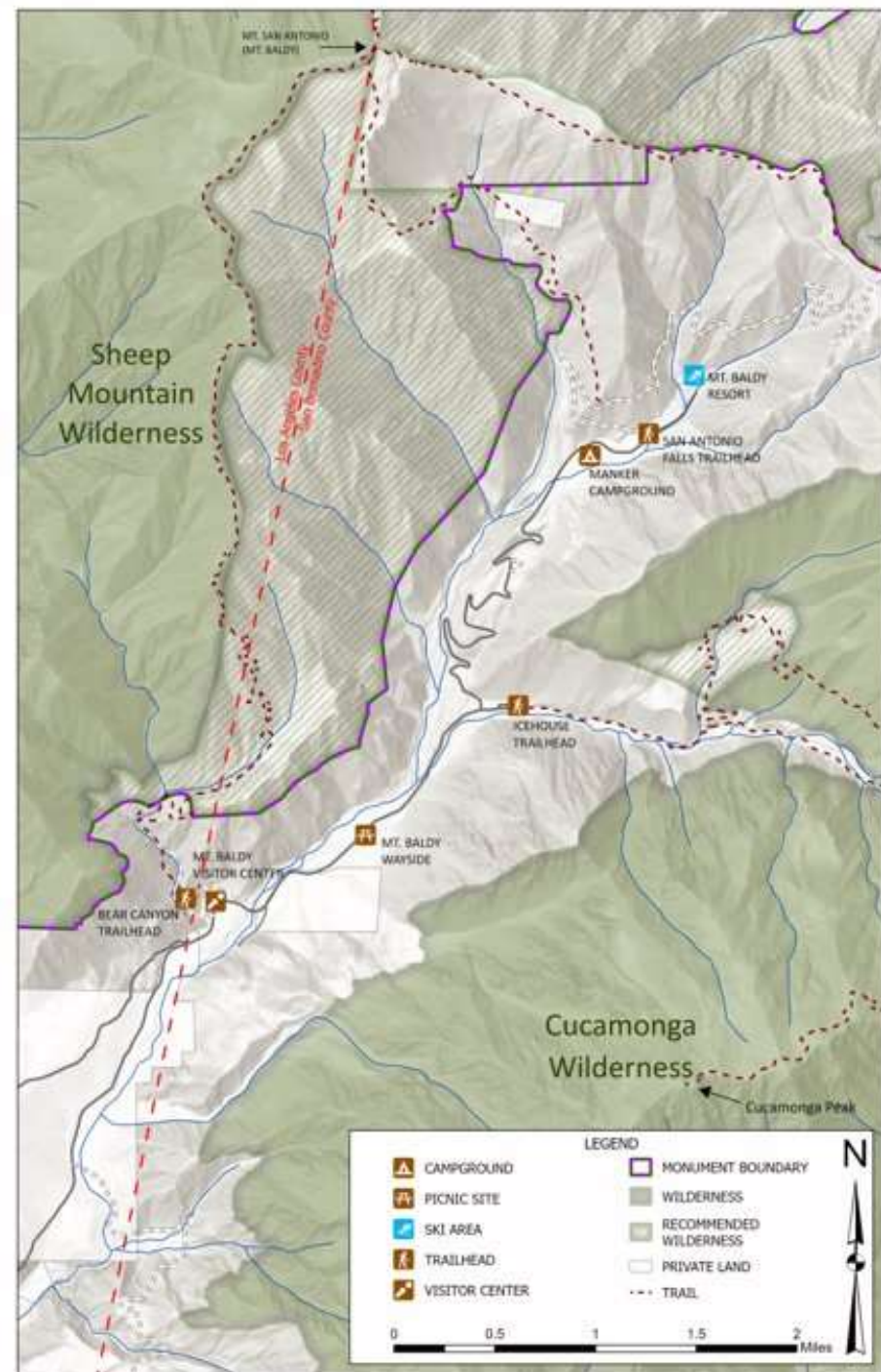


Project Vicinity

# Project Focus Area

## Angeles National Forest

### San Antonio Canyon / Mt Baldy



# How can I participate?

## Comment form



- Submit comments to an **online comment form**.  
← *Scan the code*
- Email **SanAntonioCanyonVUM@usda.gov** with subject line: “Comment for San Antonio Canyon”
- **Mail or drop feedback to:** San Gabriel Mountains National Monument Ranger District, Attn: San Antonio Canyon Visitor Use, 110 N. Wabash Ave., Glendora, CA 91741
- We request your feedback by February 28, 2026

# Example questions that we are looking for feedback on

---



## Topic 1: Visitor Experience and Opportunities

- 1. Skill Level:** How can we better accommodate a wide range of visitor skills and comfort levels - from technical hikers to casual recreation visitors?
- 2. Visitor Planning:** What strategies should we consider to make year-round recreation opportunities easy for visitors to plan and navigate?
- 3. Educational Content:** What videos or online resources help one prepare for a canyon visit? Ideas to support first-time visitors like youth groups?
- 4. Snow Play:** What infrastructure, education, and/or enforcement can improve the casual snow play experience?



## Example questions that we are looking for feedback on

---

### Topic 2: Visitor Safety and Partnerships

- **Preparedness:** Some visitors arrive unprepared for local conditions. What tools or information should be available to ensure they're fully equipped?
- **Congestion:** What works well in the current agency response to road congestion, and what changes could prevent gridlock during peak times?
- **Systems, tools, and technology:** What do you believe would be most effective in managing high visitor use while keeping the canyon safe and welcoming? Consider challenges such as traffic, parking, and rescues. Some examples include a parking reservation system, permits, concession operations and commercial services.



## Example questions that we are looking for feedback on:

---

### Topic 3: Facilities and Resource Conditions

- **Facilities:** What facilities or amenities would you like to see to improve your experience (e.g., managed parking, restrooms, trash cans)?
- **Visitor Services:** What visitor services would you like to see? For example, would you like to see guiding services, services to outfit a visitor with equipment, or other services.
- **Parking:** How do we address the limited parking capacity in the canyon? Which engineering solutions such as redesigning parking areas or designating specific parking spaces should we prioritize to protect access for visitors, residents and emergency vehicles?
- **Leave No Trace:** What actions would help visitors respect the environment and most effectively reduce 'vandalism, graffiti, and litter' in the area?

# Angeles National Forest Newsroom

---

To stay updated on this project visit the Angeles National Forest Newsroom or the Angeles National Forest Facebook page:

- **Angeles National Forest Newsroom:** <https://www.fs.usda.gov/r05/angeles/newsroom/releases>
- **Angeles National Forest Facebook** <http://www.facebook.com/angelesnationalforest>