



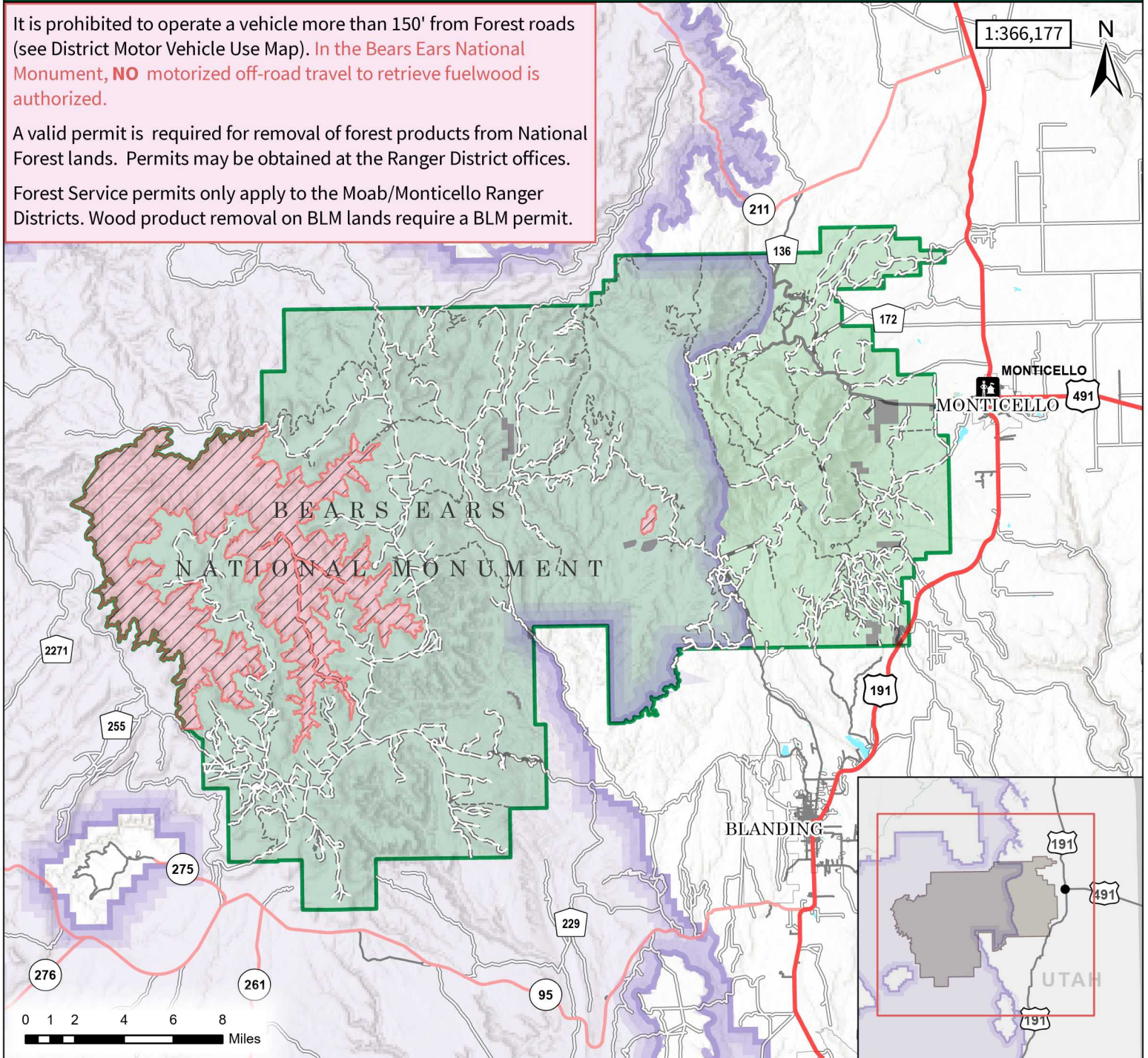
# 2026 Monticello Fuelwood Cutting and Gathering Areas

Cutting Season: January 1 - December 31

It is prohibited to operate a vehicle more than 150' from Forest roads (see District Motor Vehicle Use Map). **In the Bears Ears National Monument, NO motorized off-road travel to retrieve fuelwood is authorized.**

A valid permit is required for removal of forest products from National Forest lands. Permits may be obtained at the Ranger District offices.

Forest Service permits only apply to the Moab/Monticello Ranger Districts. Wood product removal on BLM lands require a BLM permit.



- Available to Fuelwood Harvest
- Bears Ears National Monument
- Fuelwood Harvest Prohibited
- Manti-La Sal National Forest Boundary
- Private Land (Cutting Prohibited)

- Major Roads**
- Primary Highway
  - Secondary Highway
  - Paved Road
  - Gravel Road

- Forest Service Roads**
- Paved Road
  - Gravel Road
  - Dirt (Not Paved)
  - Road, Not Maintained for Passenger Car
  - Motorized Trails

- FOREST OFFICES**
- Monticello District Office** (435) 587-2041
  - Moab District Office** (435) 259-7155
  - Supervisor's Office** (435) 636-3500

