



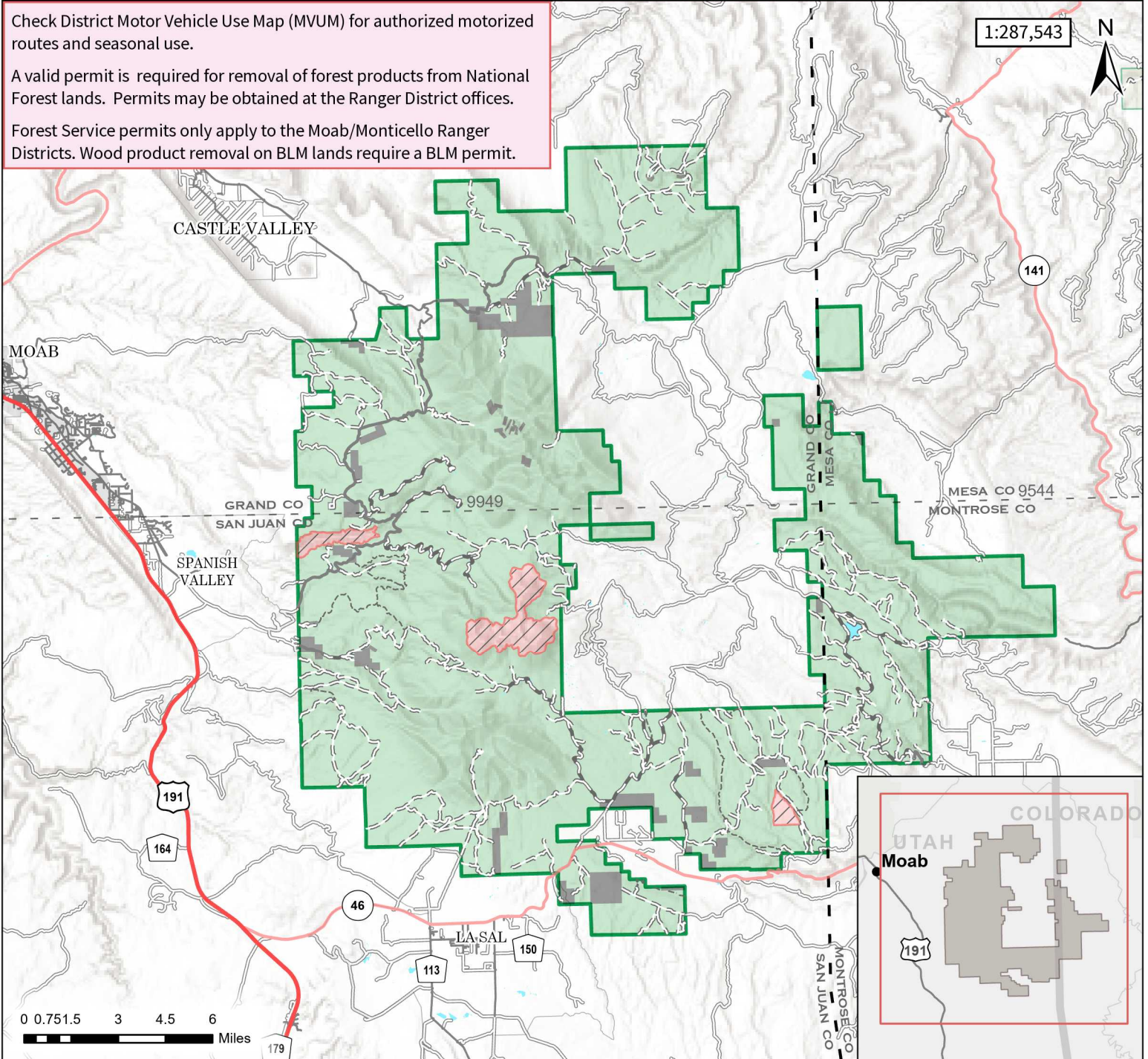
# 2026 Moab Fuelwood Cutting and Gathering Areas

Cutting Season: January 1 - December 31

Check District Motor Vehicle Use Map (MVUM) for authorized motorized routes and seasonal use.

A valid permit is required for removal of forest products from National Forest lands. Permits may be obtained at the Ranger District offices.

Forest Service permits only apply to the Moab/Monticello Ranger Districts. Wood product removal on BLM lands require a BLM permit.



Available to Fuelwood Harvest	<b>Major Roads</b>	<b>Forest Service Roads</b>	<b>FOREST OFFICES</b>
Fuelwood Harvest Prohibited	Primary Highway	Paved Road	<b>Moab District Office</b> (435) 259-7155
Manti-La Sal National Forest Boundary	Secondary Highway	Gravel Road	<b>Monticello District Office</b> (435) 587-2041
Private Land (Cutting Prohibited)	Paved Road	Dirt (Not Paved)	<b>Supervisor's Office</b> (435) 636-3500
	Gravel Road	Road, Not Maintained for Passenger Car	
		Motorized Trails	



This product is reproduced from information prepared by the USDA, Forest Service or from other suppliers. The Forest Service cannot assure the reliability or suitability of this information for a particular purpose. The data and product accuracy may vary due to compilation from various sources, including modeling and interpretation, and may not meet National Map Accuracy Standards. This information may be updated, corrected or otherwise modified without notification. For more information contact: Manti-La Sal National Forest Supervisors Office at 435-637-2817. USDA is an equal opportunity provider, employer, and lender.