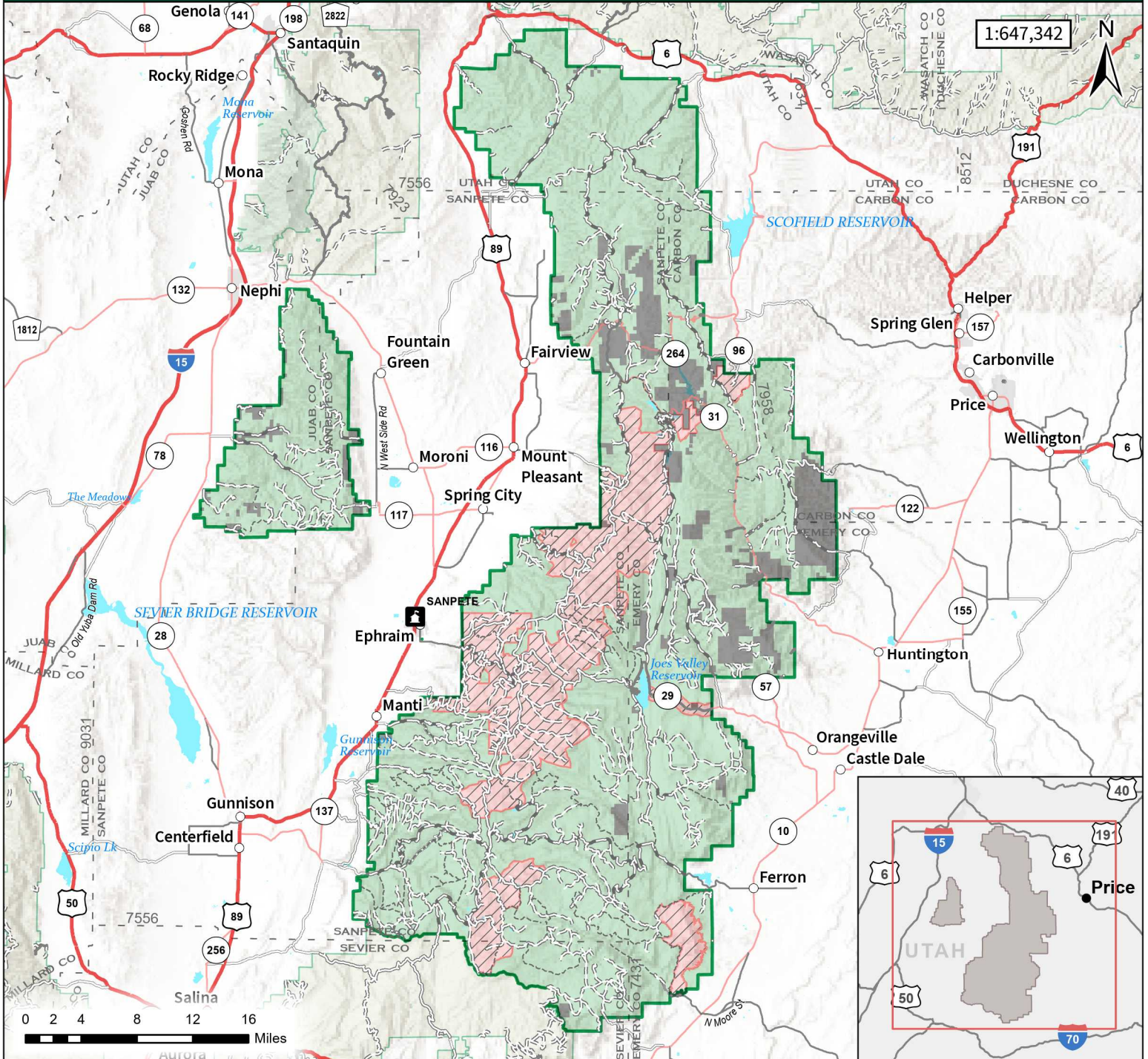




# 2026 North Zone Fuelwood Cutting and Gathering Areas

Cutting Season: January 1 - December 31



- Available to Fuelwood Harvest
- Fuelwood Harvest Prohibited
- Manti-La Sal National Forest Boundary
- Private Land (Cutting Prohibited)

- Major Roads**
- Primary Highway
  - Secondary Highway
  - Paved Road
  - Gravel Road

- Forest Service Roads**
- Paved Road
  - Gravel Road
  - Dirt (Not Paved)
  - Road, Not Maintained for Passenger Car
  - Motorized Trails

- FOREST OFFICES**
- Ferron/Price Ranger District** (435) 636-3580
  - Sanpete Ranger District** (435) 636-3300
  - Supervisor's Office** (435) 636-3500



This product is reproduced from information prepared by the USDA, Forest Service or from other suppliers. The Forest Service cannot assure the reliability or suitability of this information for a particular purpose. The data and product accuracy may vary due to compilation from various sources, including modeling and interpretation, and may not meet National Map Accuracy Standards. This information may be updated, corrected or otherwise modified without notification. For more information contact: Manti-La Sal National Forest Supervisors Office at 435-637-2817. USDA is an equal opportunity provider, employer, and lender.