

United States Department of Agriculture  
Forest Service  
COLORADO  
MAR 2025

America's Great Outdoors

Motor Vehicle Use Map  
San Isabel National Forest  
Salida Ranger District

**PURPOSE AND CONTENTS OF THIS MAP**

The designations shown on this motor vehicle use map (MVUM) were made by the responsible official pursuant to 36 CFR 212.51, are effective as of the date on the front cover of this MVUM, and will remain in effect until superseded by the next year's MVUM.

It is the responsibility of the user to acquire the current travel information. This MVUM shows the National Forest System roads, National Forest System trails, and the areas on National Forest System lands in the Salida Ranger District that are designated for motor vehicle use pursuant to 36 CFR 212.51. This MVUM also identifies the vehicle classes allowed on each route and in each area, and any seasonal restrictions that apply on.

Designation of a road, trail, or area for motor vehicle use by a particular class of vehicle under 36 CFR 212.51 should not be interpreted as encouraging or inviting use, or to imply that the road, trail or area is passable, actively maintained, or safe for travel. Motor vehicle designations include parking along designated routes and at facilities associated with designated routes when it is safe to do so and when not causing damage to National Forest System resources. Seasonal weather conditions and natural events may render designated routes and trails impassable for extended periods. Designated areas may contain dangerous or impassable terrain. Many designated roads and trails may be passable only by high-clearance vehicles or four-wheel drive vehicles. Maintenance of designated roads and trails will depend on available resources, and many may receive little maintenance.

This motor vehicle use map identifies those roads, trails, and areas designated for the motor vehicle use under 36 CFR 212.51 for the purpose of enforcing the prohibition at 36 CFR 261.13. This is a limited purpose. The other public roads are shown for information and navigation purposes only and are not subject to designation under the Forest Service travel.

These designations apply only to National Forest System roads, National Forest System trails, and areas on National Forest System lands.

**OPERATOR RESPONSIBILITIES**

Operating a motor vehicle on National Forest System roads, National Forest System trails, and in areas on National Forest System lands carries a greater responsibility than operating that vehicle in a city or other developed setting. Not only must you know and follow all applicable traffic laws, you need to show concern for the environment as well as other forest users. The misuse of motor vehicles can lead to the temporary or permanent closure of any designated road, trail, or area. As a motor vehicle operator, you are also subject to State traffic law, including State requirements for licensing, registration, and operation of the vehicle in question.

Motor vehicle use, especially off-highway vehicle use, involves inherent risks that may cause property damage, serious injury, and possibly death to participants. Drive cautiously and anticipate rough surfaces and features, such as snow, mud, vegetation, and water crossings common to remote driving conditions. By your participation, you voluntarily assume full responsibility for these damages, risks, and dangers. Take care at all times to protect yourself and those under your responsibility.

Much of the Salida Ranger District is remote. Medical assistance may not be readily available. Cellular telephones do not work in many areas of the Salida Ranger District. Take adequate food, water, first aid supplies, and other equipment appropriate for the conditions and expected weather.

**ALWAYS REMEMBER TO RESPECT PRIVATE LAND! PROTECT YOUR PRIVILEGE. STAY ON DESIGNATED ROADS AND TRAILS AND IN DESIGNATED AREAS.**

Read and understand this map in its entirety. If you have questions, please contact the Salida Ranger District for clarification.

As a motor vehicle operator on a National Forest System road, trail, or area, you must comply with this map, as well as all Federal, State, and local laws and regulations. Compliance with these rules is your responsibility.

**VICINITY MAP**

**INFORMATION SOURCES**

Salida Ranger District  
5575 Cleora Road  
Salida, CO 81201  
(719) 539-3591

Forest Supervisor  
Pike-San Isabel National Forests & Cimarron and Comanche National Grasslands  
2840 Kachina Drive  
Pueblo, CO 81008  
(719) 553-1400

In case of Emergency: Dial 911  
Salida Ranger District Website:  
<https://www.fs.usda.gov/02/psic>

**PROHIBITIONS**

It is prohibited to possess or operate a motor vehicle on National Forest System lands on the Salida Ranger District other than in accordance with these designations (36 CFR 261.13).

Violations of 36 CFR 261.13 are subject to a fine of up to \$5,000 or imprisonment for up to 6 months or both (18 U.S.C. 3571(e)). This prohibition applies regardless of the presence or absence of signs.

This map does not display nonmotorized uses, over-snow uses, or other facilities and attractions on the Salida Ranger District. Obtain forest visitor information from the local National Forest Office.

Designated roads, trails and areas may also be subject to temporary, emergency closures, and visitors must comply with signs notifying them of such restrictions. A national forest may issue an order to close a road, trail or area on a temporary basis to protect the life, health, or safety of forest visitors or the natural or cultural resources in these areas. Such a temporary and/or emergency closure is consistent with the Travel Management Rule (36 CFR 212.52(b)), 36 CFR 261 (subpart B).

The designation "road or trail open to all motor vehicles" does not supersede State traffic law.

USDA is an equal opportunity provider, employer, and lender.

**LEGEND**

- Roads Open to Highway Legal Vehicles
- Roads Open to All Vehicles
- Roads with Special Vehicle Designation
- Trails Open to All Vehicles
- Trails Open to Vehicles 50" or Less in Width
- Trails Open to Motorcycles Only
- Seasonal Designation (See Seasonal Designations Table)
- Interstate Highways, U.S. State, County & Other Public Roads
- U.S. Highway Route Number
- State Highway Route Number
- County Road Number
- Other Public Trails
- Short Route Identifier
- Major Streams
- FS Campground
- Picnic Area
- Motorized Trailhead
- Mountain Peak
- Cities, Towns
- Forest and District Boundary
- National Forest System Lands
- Non-National Forest System Lands within the National Forest
- BLM Lands
- State Lands
- State Wildlife Areas (SWA)
- Wilderness Areas
- County Boundary
- Township and Range Lines
- Section Lines
- Lakes

**EXPLANATION OF LEGEND ITEMS**

Roads Open to Highway Legal Vehicles Only:  
Roads open only to motor vehicles licensed under State law for general operation on all public roads.

Roads Open to All Vehicles:  
Roads open to all motor vehicles, including smaller off highway vehicles that may not be licensed for highway use (not to oversize or overweight vehicles under State traffic law).

Trails Open to All Vehicles:  
Trails open to all motor vehicles, including both highway legal and nonhighway legal vehicles.

Trails Open to Motorcycles Only:  
Trails open only to motorcycles. Sidecars are not permitted.

Trails open only to motor vehicles less than 50 inches in width at the widest point on the vehicle.

Trails Open to Vehicles 50" or Less in Width:  
Trails open only to motor vehicles less than 50 inches in width at the widest point on the vehicle.

Trails Open to Motorcycles Only:  
Trails open only to motorcycles. Sidecars are not permitted.

Special Vehicle Designation:  
This symbol indicates the road or trail is open to classes of vehicles other than those listed above. Refer to the Seasonal and Special Vehicle Designations Table for further instructions.

Seasonal Designation:  
This symbol, used in conjunction with one of the other road or trail symbols, indicates that the route is open only during certain portions of the year. Refer to the Seasonal and Special Vehicle Designations Table for further instructions.

Other Public Roads and Trails:  
Interstate Highways, U.S. State, County & Other Public Roads  
Used to show routes not designated for motorized use by the Forest Service. Part of the reference layers showing connections to towns and cities outside the forest boundary.

State OHV Requirements:  
State of Colorado OHV sticker required for all users of motorized trails regardless of vehicle type.

**BLANKET STATEMENTS FOR TRAVEL MANAGEMENT**

**Map Revisions**

The designations shown on this map will remain in effect until revised with the publication of a new map. In January of each year, this motor vehicle use map will either be revised with the publication of a new map, or it will be validated for the new year by the Ranger District with a new stamp that says "Valid for Year 20\_\_".

**Parking/Dispersed Camping on the San Isabel National Forest**

- Where designated parking areas are not available, and where not specifically prohibited, unsafe, or causing resource damage, parking on National Forest System lands within one vehicle length off of designated routes is authorized.
- Dispersed camping is authorized on National Forest System lands except in specially designated areas that are closed to camping.
- Motorized dispersed camping is authorized within one vehicle length off of designated National Forest System routes, where not specifically prohibited, unsafe, or causing resource damage.
- Please review the current forest orders on the PSICC public webpage at: <https://www.fs.usda.gov/02/psicc/>, to find out what restrictions may be in place for the location(s) where you want to camp.
- Check with the local National Forest District office for current information on areas closed to camping and for other travel management information.

**Chaffee County OHV Use**

- Chaffee County allows OHV use on some county roads. See [www.chaffeecounty.org/departments/road\\_bridges/ohv](http://www.chaffeecounty.org/departments/road_bridges/ohv) for specific information on county roads open to OHVs and the regulations governing that use.

**Temporary Closures**

- Check with [www.fs.usda.gov/02/psicc/](http://www.fs.usda.gov/02/psicc/) for current temporary closures and prohibitions.

**Campground Information**

- Most Salida Ranger District developed recreation sites and access roads are closed during the winter months.
- Visit [www.fs.usda.gov/02/psicc/recreation](http://www.fs.usda.gov/02/psicc/recreation), then click on the camping & cabins tab, for detailed information on each campground, including the estimated opening and closing dates.

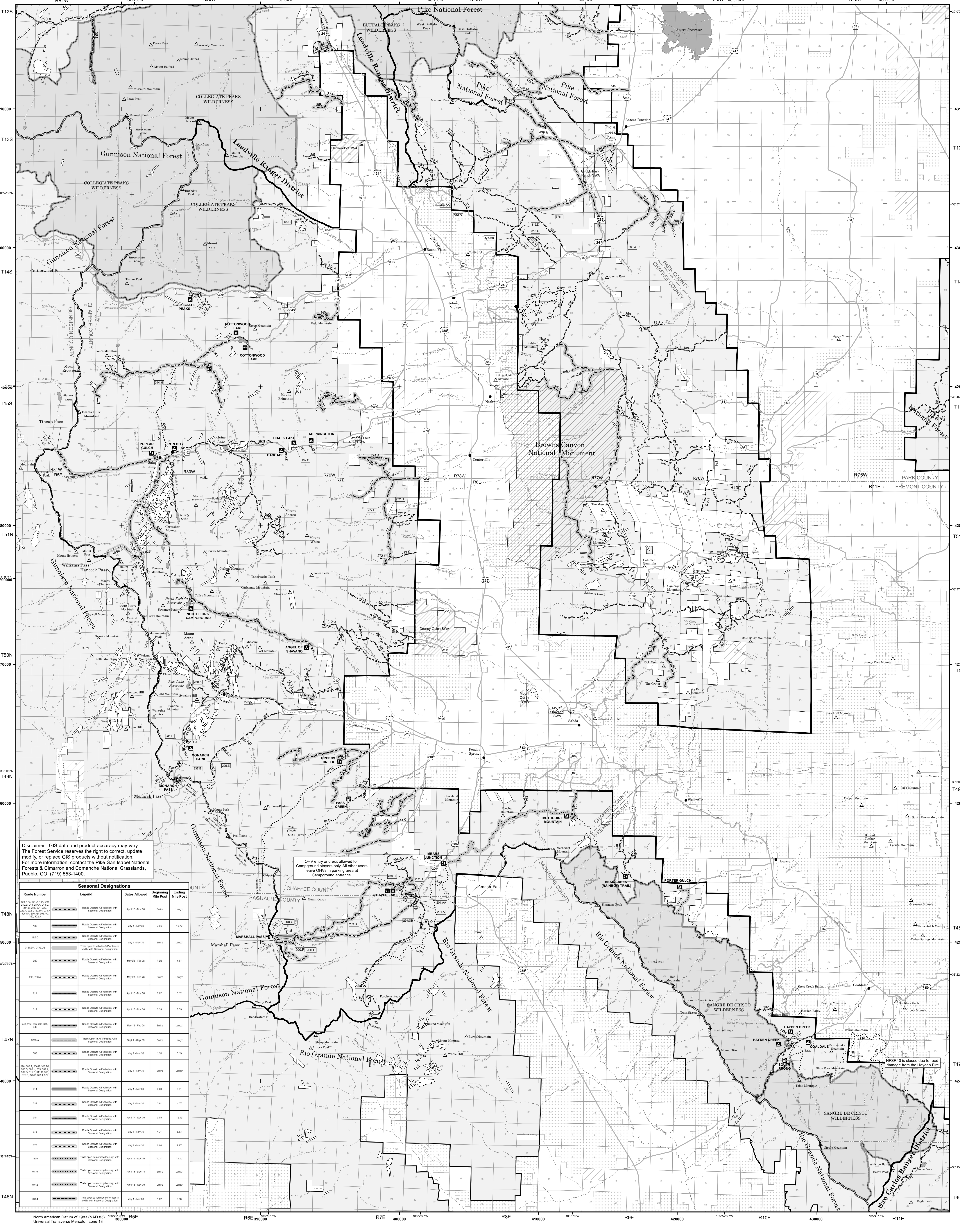
**Avenza PDF Maps App**

- iPhone and Android mobile device users: Now you can carry digital maps on your mobile device using the free Avenza PDF Maps App ([www.avenzamaps.com](http://www.avenzamaps.com)). Motor Vehicle Use Maps may be downloaded to your mobile device with the free app. The above link does not imply an endorsement by the U.S. Government of the product offered.

**MVUM Disclaimer**

#1: GIS data and product accuracy may vary. The Forest Service reserves the right to correct, update, modify, or replace GIS products without notification. For more information, contact the Pike-San Isabel National Forests & Cimarron and Comanche National Grasslands, Pueblo, CO. (719) 553-1400.

#2: NFS routes symbolized on other districts are shown for clarity of continuity but may not represent current management status. To obtain the most current information, refer to the specific district map for the applicable district.



Route Number	Legend	Dates Allowed	Beginning Mile Post	Ending Mile Post
100	Trails Open to All Vehicles with Seasonal Designation	April 16 - Nov 30	0.00	1.00
101	Trails Open to All Vehicles with Seasonal Designation	May 1 - Nov 30	7.00	10.75
102	Trails Open to All Vehicles with Seasonal Designation	May 1 - Nov 30	0.00	0.90
103	Trails Open to All Vehicles with Seasonal Designation	May 1 - Nov 30	0.00	1.00
104	Trails Open to All Vehicles with Seasonal Designation	May 1 - Nov 30	0.00	1.00
105	Trails Open to All Vehicles with Seasonal Designation	May 1 - Nov 30	0.00	1.00
106	Trails Open to All Vehicles with Seasonal Designation	May 1 - Nov 30	0.00	1.00
107	Trails Open to All Vehicles with Seasonal Designation	May 1 - Nov 30	0.00	1.00
108	Trails Open to All Vehicles with Seasonal Designation	May 1 - Nov 30	0.00	1.00
109	Trails Open to All Vehicles with Seasonal Designation	May 1 - Nov 30	0.00	1.00
110	Trails Open to All Vehicles with Seasonal Designation	May 1 - Nov 30	0.00	1.00
111	Trails Open to All Vehicles with Seasonal Designation	May 1 - Nov 30	0.00	1.00
112	Trails Open to All Vehicles with Seasonal Designation	May 1 - Nov 30	0.00	1.00
113	Trails Open to All Vehicles with Seasonal Designation	May 1 - Nov 30	0.00	1.00
114	Trails Open to All Vehicles with Seasonal Designation	May 1 - Nov 30	0.00	1.00
115	Trails Open to All Vehicles with Seasonal Designation	May 1 - Nov 30	0.00	1.00
116	Trails Open to All Vehicles with Seasonal Designation	May 1 - Nov 30	0.00	1.00
117	Trails Open to All Vehicles with Seasonal Designation	May 1 - Nov 30	0.00	1.00
118	Trails Open to All Vehicles with Seasonal Designation	May 1 - Nov 30	0.00	1.00
119	Trails Open to All Vehicles with Seasonal Designation	May 1 - Nov 30	0.00	1.00
120	Trails Open to All Vehicles with Seasonal Designation	May 1 - Nov 30	0.00	1.00
121	Trails Open to All Vehicles with Seasonal Designation	May 1 - Nov 30	0.00	1.00
122	Trails Open to All Vehicles with Seasonal Designation	May 1 - Nov 30	0.00	1.00
123	Trails Open to All Vehicles with Seasonal Designation	May 1 - Nov 30	0.00	1.00
124	Trails Open to All Vehicles with Seasonal Designation	May 1 - Nov 30	0.00	1.00
125	Trails Open to All Vehicles with Seasonal Designation	May 1 - Nov 30	0.00	1.00
126	Trails Open to All Vehicles with Seasonal Designation	May 1 - Nov 30	0.00	1.00
127	Trails Open to All Vehicles with Seasonal Designation	May 1 - Nov 30	0.00	1.00
128	Trails Open to All Vehicles with Seasonal Designation	May 1 - Nov 30	0.00	1.00
129	Trails Open to All Vehicles with Seasonal Designation	May 1 - Nov 30	0.00	1.00
130	Trails Open to All Vehicles with Seasonal Designation	May 1 - Nov 30	0.00	1.00
131	Trails Open to All Vehicles with Seasonal Designation	May 1 - Nov 30	0.00	1.00
132	Trails Open to All Vehicles with Seasonal Designation	May 1 - Nov 30	0.00	1.00
133	Trails Open to All Vehicles with Seasonal Designation	May 1 - Nov 30	0.00	1.00
134	Trails Open to All Vehicles with Seasonal Designation	May 1 - Nov 30	0.00	1.00
135	Trails Open to All Vehicles with Seasonal Designation	May 1 - Nov 30	0.00	1.00
136	Trails Open to All Vehicles with Seasonal Designation	May 1 - Nov 30	0.00	1.00
137	Trails Open to All Vehicles with Seasonal Designation	May 1 - Nov 30	0.00	1.00
138	Trails Open to All Vehicles with Seasonal Designation	May 1 - Nov 30	0.00	1.00
139	Trails Open to All Vehicles with Seasonal Designation	May 1 - Nov 30	0.00	1.00
140	Trails Open to All Vehicles with Seasonal Designation	May 1 - Nov 30	0.00	1.00
141	Trails Open to All Vehicles with Seasonal Designation	May 1 - Nov 30	0.00	1.00
142	Trails Open to All Vehicles with Seasonal Designation	May 1 - Nov 30	0.00	1.00
143	Trails Open to All Vehicles with Seasonal Designation	May 1 - Nov 30	0.00	1.00
144	Trails Open to All Vehicles with Seasonal Designation	May 1 - Nov 30	0.00	1.00
145	Trails Open to All Vehicles with Seasonal Designation	May 1 - Nov 30	0.00	1.00
146	Trails Open to All Vehicles with Seasonal Designation	May 1 - Nov 30	0.00	1.00
147	Trails Open to All Vehicles with Seasonal Designation	May 1 - Nov 30	0.00	1.00
148	Trails Open to All Vehicles with Seasonal Designation	May 1 - Nov 30	0.00	1.00
149	Trails Open to All Vehicles with Seasonal Designation	May 1 - Nov 30	0.00	1.00
150	Trails Open to All Vehicles with Seasonal Designation	May 1 - Nov 30	0.00	1.00