

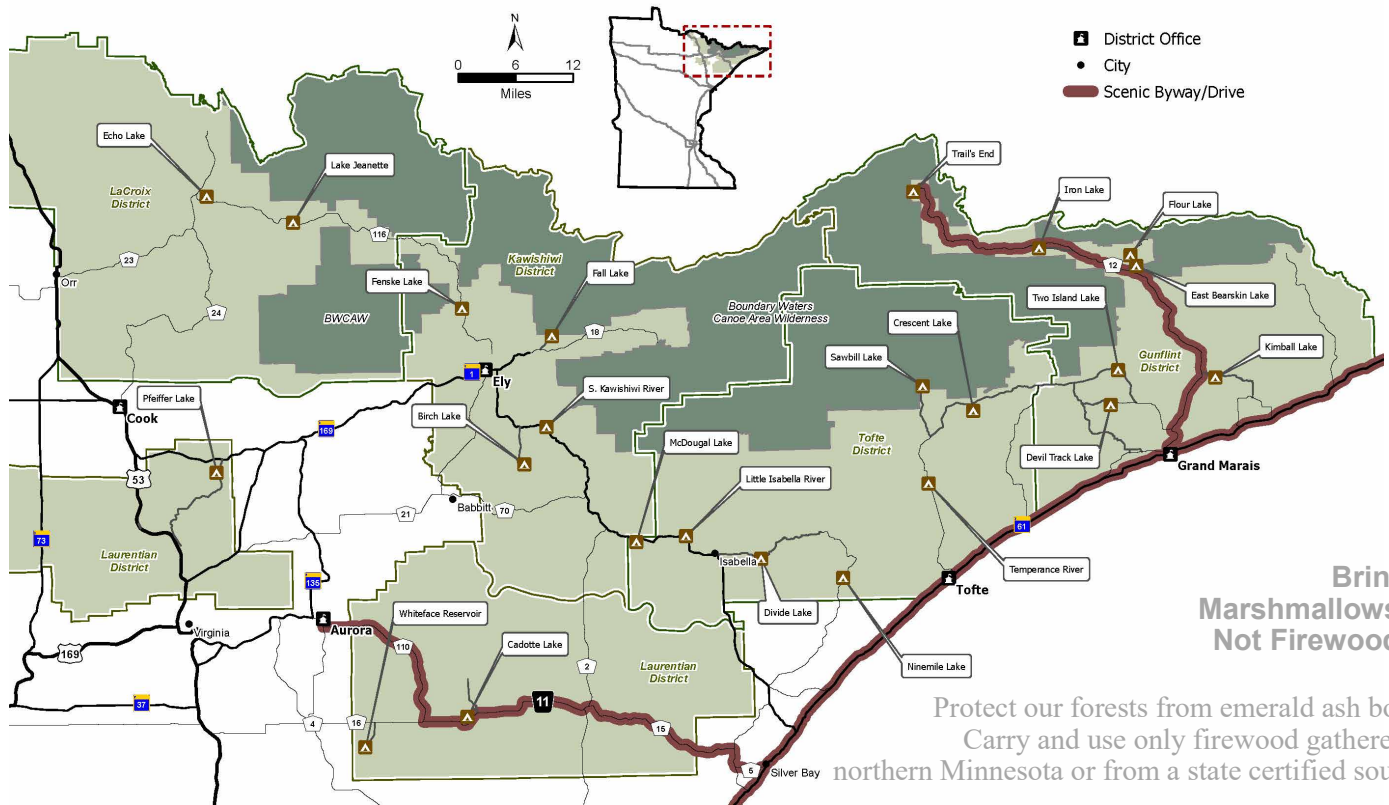


# Camping

2026 Fees  
Inside



The Superior National Forest has four different types of camping opportunities outside of the Boundary Waters Canoe Area Wilderness: **Fee Campgrounds**, **Rustic Campgrounds**, **Backcountry Campsites** and **Dispersed Camping**. Whether you're in a tent or recreational vehicle (RV), one is right for you!



## Fee Campgrounds

Most fee campgrounds provide sites for tents, tent trailers, or RVs, as well as a few hike-in, tent only sites. Fee campgrounds include accessible outhouses, drinking water faucets, garbage and recycling, and may include trails, fishing piers, boat launches, picnic areas, beaches, showers and electricity. Each campsite has a fire ring, picnic table and level tent pad. See the Superior National Forest website for more information. The next page lists 2026 fees and each campground's amenities.

- Visit the pay station at the campground to register and pay the fee, or pay when you reserve a site if applicable.
- Cash or check payments for non-reserved sites accepted at all campgrounds

- Payments for non-reserved sites through the Recreation.gov app available at some locations. Account must be created ahead of visit.
- Spurs on most sites hold one vehicle and one trailer. Additional vehicles may not park on grass or roads and require an additional nightly fee.
- Limit of nine people on single, premium, and long term sites. Group sites are available at some campgrounds. 14 day limit outside of long term sites. Cabins vary in size, see website or call for specifics.
- Interagency Senior & Interagency Access passes and Tribal memberships honored.
- Some sites in most campgrounds may be reserved through Recreation.gov at: [www.recreation.gov](http://www.recreation.gov)
- Some sites in all campgrounds are available on first-come, first-served basis.



# Fee Campgrounds - 2026 Fee Season

Fees collected May - Oct., weather depending. Fee season may not match reservation season.

Ranger District	Campground	Reservations	Electricity	# Single Sites	# Group Sites	# Long Term	# Cabins	Additional Features B=Beach P=Picnic L=Boat Launch R=Rental Pavilion T=Trail	Single site fee per night	Premium Single Site fee per night	Group Site fee per night	Long Term Site fee per month or season	Cabin fee per night
<b>Gunflint</b>	Devil Track Lake			16					\$22				
	East Bearskin Lake	Y		32			4	PL	\$24				\$86
	Flour Lake	Y		37				L	\$24				
	Iron Lake	Y		7					\$24				
	Kimball Lake			10				LT	\$22				
	Trail's End	Y		32				L	\$22	\$24			
	Two Island Lake			38				PL	\$22				
<b>Kawishiwi</b>	Birch Lake	Y		29	1		2	L	\$21		\$65		\$95
	Fall Lake	Y	Y	64	2			BPLT	\$30		\$110 \$130		
	Fenske Lake	Y		15	1			BPLT	\$22		\$65		
	S. Kawishiwi River	Y	Y	31				BPLRT	\$22				
<b>LaCroix</b>	Echo Lake	Y		24	1			BPL	\$18		\$30		
	Lake Jeanette	Y		12				LT	\$18				
<b>Laurentian</b>	Cadotte Lake	Y		27		2		BPL	\$26	\$28		\$1150/seas	
	Pfeiffer Lake	Y		16				BPLT	\$18				
	Whiteface Reservoir	Y	Y	52	1	6/ mo, 6/ seas		BPLT	\$28	\$30	\$155	\$450/mo \$600/mo \$1150/seas \$1830/seas	
<b>Tofte</b>	Crescent Lake	Y		33	1			L	\$20		\$40		
	Divide Lake			3				T	\$18				
	Little Isabella River	Y		11		4		P	\$18			\$504/seas	
	McDougal Lake	Y		21		5		BPLT	\$18			\$504/seas	
	Ninemile Lake	Y		26				PLT	\$18				
	Sawbill Lake	Y		52				P	\$20				
	Temperance River			9					\$20				

**Water:** Water is available at all fee campgrounds. Most have solar powered community faucets.

*Trail's End:* Some sites have individual faucets. *Fall Lake:* Plumbed bathhouse with showers.

**Electric:** *Whiteface R:* Add'l \$7 fee. The group site and the \$590/month & \$1,810/season sites incl. electric.

*Fall Lake:* Additional \$8 at 30 amp sites, \$10 at 50 amp sites. Fall Lake group site fees include electric.

*S. Kawishiwi:* Additional \$8 at 30 amp sites, \$10 at 50 amp sites.

**Single site:** 9 person max. with parking for 1 non-towed vehicle and space for 1 tent/RV (may be tent only)

**Premium single site:** Fee for single site with premium feature(s) such as water access, view, etc.

**Group site:** Fee for group site suitable for multiple tents/RVs, or groups over 9. Call district for details.

**Long term site:** Fee is for entire season except 6 sites available at a monthly rate at *Whiteface Reservoir*.

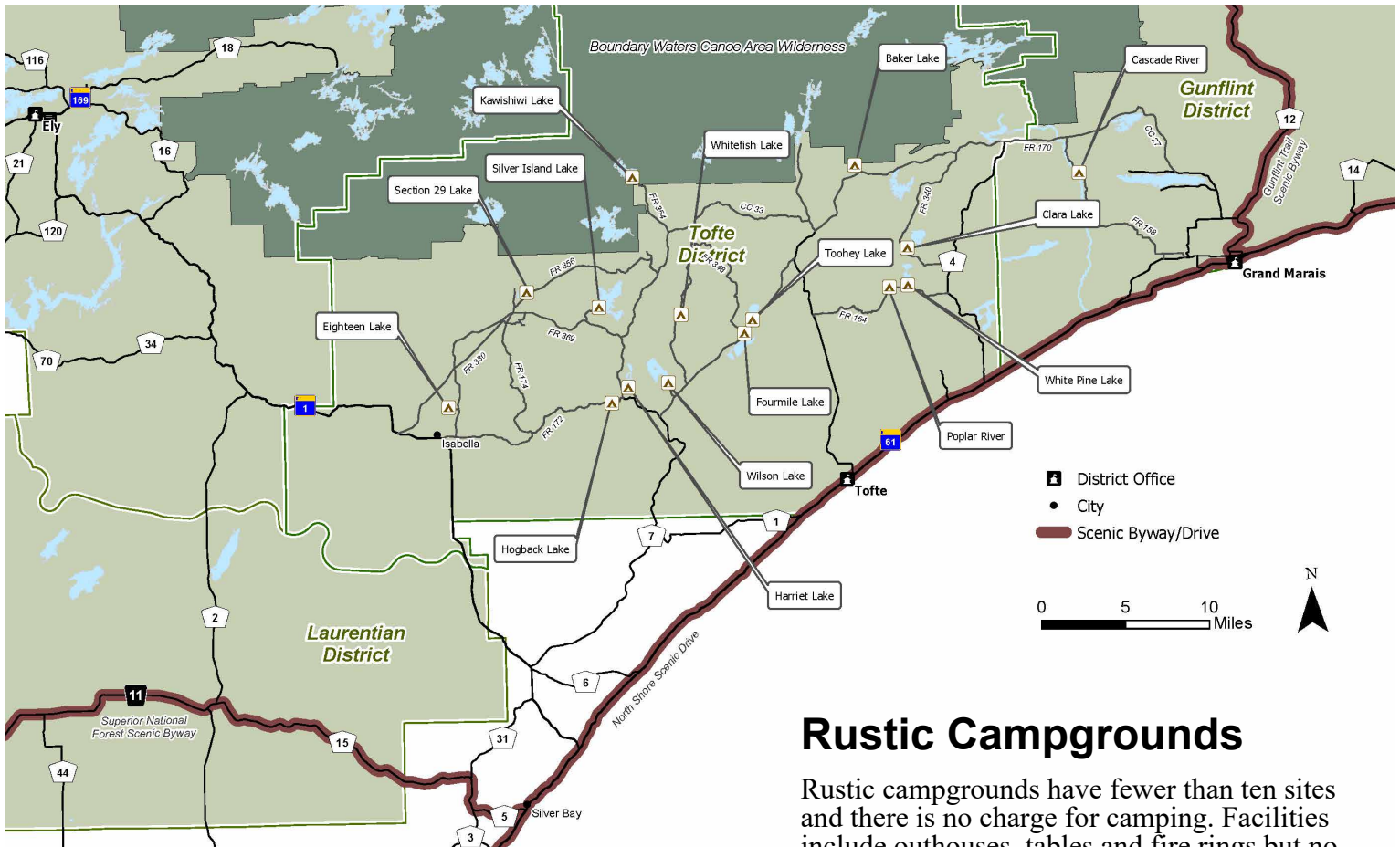
**Additional non-towed vehicle:** Fall, Cadotte, Whiteface \$8; Birch, Fenske, S. Kaw \$8; Others: Half single fee.

**Reservations:** [www.recreation.gov](http://www.recreation.gov) RECREATION.gov

Toll Free 877-444-6777 TDD 877-833-6777 Intl: 518-885-3639

**Outside operating season:** No water or garbage; campground roads are unplowed and may be gated; toilet facilities may be unavailable.

# Superior National Forest - Rustic Campgrounds



## Rustic Campgrounds

Rustic campgrounds have fewer than ten sites and there is no charge for camping. Facilities include outhouses, tables and fire rings but no drinking water or garbage cans. Sites are generally for tents, but some will accommodate a small RV or tent trailer. These campgrounds were often developed with fishing in mind, so be sure to pack your poles.

- Maximum group size of nine.
- Only use the facilities that are provided for fires, tents, and waste. Do not make additional fire rings, tent pads, trenches or catholes.
- You will need to pack out your garbage and extra food.
- Quiet hours are enforced at developed campsites. Be aware that sounds from your campsite including radios, generators, or musical instruments should not disturb other campers even outside of quiet hours.

Campground Name	Number of Sites *	Fish **
Baker Lake	5 (2)	WNP
Cascade River	4 (1)	Bt
Clara Lake	3 (1)	WNP
Eighteen Lake	3 (0)	WPSm
Fourmile Lake	4 (2)	WNCP
Harriet Lake	6 (2)	WNC
Hogback Lake	3 (3)	Rt
Kawishiwi Lake	5 (5)	WNP
Poplar River	4 (2)	Trout str.
Section 29 Lake	4 (0)	WN
Silver Island Lake	8 (8)	WN
Toohey Lake	7 (3)	WN
White Pine Lake	3 (2)	WNP
Whitefish Lake	3(2)	WN
Wilson Lake	4 (3)	WNP

\* Total number of sites, (Number of sites with a parking spur of more than 21 ft. suitable for RV or trailer)

\*\*Fish codes: **Sm**=smallmouth bass, **C**=crappies, **N**=northern pike, **P**=perch, **M**=muskie, **Rt**=rainbow trout, **Bt**=brook trout, **W**=walleye

# Superior National Forest - Other Camping

## Backcountry Campsites

Backcountry campsites are similar to campsites in the Boundary Waters Canoe Area Wilderness, but because they are not in the BWCAW, no permits or fees are required. These single sites outside of a campground have a fire grate, a flat space for a tent, a wilderness latrine (an outhouse without the house) and may have a picnic table. The group size limit is nine.



- Use only the provided facilities for fires, tents and waste. Do not make additional fire rings, tent pads, trenches or cat holes.
- Pack out your garbage and extra food.
- Ranger districts and the Supervisor's Office in Duluth have further information and locations of these sites. Locations are also on the current forest map.

**Campfires may be restricted or banned in dry weather, so bring a stove. Never leave campfires unattended. Be sure your fire is out cold before you leave the campsite.**

## Dispersed Camping

If your idea of camping is literally off the beaten trail, most of the Superior National Forest outside of the Boundary Waters Canoe Area Wilderness is open for dispersed tent camping. No permits or reservations are needed. This is camping outside of designated sites – just you and the woods without latrines, fire rings or other amenities. Remember to Leave No Trace.

- Check for fire restrictions that may apply to campfires outside of developed campsites. In dry conditions, campfires may be banned in the general forest, but still allowed in campgrounds.
- Parking motor vehicles or trailers is not allowed where they impede traffic, harm vegetation or harm soils.
- Do not cut live trees or construct any “improvements” at your camp, including trenches.
- Use a camp stove or disperse all signs of a campfire if you use one. Do not leave a rock ring.
- Camping equipment may not be left unattended for more than 24 hours.

**For more information, go to [www.fs.usda.gov/r09/superior](http://www.fs.usda.gov/r09/superior) on the web or contact:**

**Superior National Forest  
Headquarters**  
8901 Grand Avenue Place  
Duluth, MN 55808  
(218) 626-4300  
SM.FS.Superior\_NF  
@usda.gov

**Gunflint  
Ranger District**  
2020 W. Hwy 61  
Grand Marais,  
MN 55604  
(218) 387-1750

**Tofte  
Ranger District**  
7355 W. Hwy 61  
P.O. Box 2159  
Tofte, MN 55615  
(218) 663-8060

**Kawishiwi  
Ranger District**  
1393 Hwy. 169  
Ely, MN 55731  
(218) 365-7600

**LaCroix  
Ranger District**  
320 Hwy 53 North  
Cook, MN 55723  
(218) 666-0020

**Laurentian  
Ranger District**  
318 Forestry Road  
Aurora, MN 55705  
(218) 453-8650

*USDA is an equal opportunity provider, employer, and lender.*

