

United States Department of Agriculture
Forest Service
COLOrado MAR 2026

America's Great Outdoors

San Isabel National Forest
Motor Vehicle Use Map

VICINITY MAP

Index Map



INFORMATION SOURCES

San Carlos Ranger District
3028 East Main Street
Canon City, CO 81212
(719) 269-8500

Forest Supervisor
Pike-San Isabel National Forests & Cimarron and Comanche National Grasslands
2840 Kachina Drive
Pueblo, CO 81008
(719) 553-1400

In case of Emergency: Dial 911

San Carlos Ranger District Website:
<http://www.fs.usda.gov/gtopsc/sanc>

USDA is an equal opportunity provider, employer, and lender.



EXPLANATION OF LEGEND ITEMS

Roads Open to Highway Legal Vehicles Only:
Roads open to motor vehicles licensed under State law for general operation on all public roads.
Roads Open to All Vehicles:
Roads open to all motor vehicles, including smaller off highway vehicles that may not be licensed for highway use (not to oversize or overweight vehicles under State traffic law).
Trails Open to Vehicles 50' or Less in Width:
Trails open only to motor vehicles less than 50 inches in width at the widest point on the vehicle.
Trails Open to Motorcycles Only:
Trails open only to motorcycles. Sidecars are not permitted.
Seasonal Designation:
This symbol, used in conjunction with one of the other road or trail symbols, indicates that the road or trail is open only during certain portions of the year. Refer to the Seasonal Designations Table for further instructions.
Other Public Roads:
Interstate & Highways, U.S. State, County, Other
Used to show routes not designated for motorized use by the Forest Service. Part of the reference layers showing connections to towns and cities outside the forest boundary.
Short Route Identifier:
This symbol is used for routes that are too short to show a symbol type on the map. The symbol contains the number of the road or trail. Users should refer to the corresponding number in the Short Route Table for designation information.
Motorized Trail Access:
This symbol indicates a trailhead for access to a motorized route. Not all motorized routes have trailheads and those that do may range from primitive to developed.

PURPOSE AND CONTENTS OF THIS MAP

The designations shown on this motor vehicle use map (MVUM) were made by the responsible official pursuant to 36 CFR 212.51, and are effective as of the date on the front cover of this MVUM, and will remain in effect until superseded by the next year's MVUM.

It is the responsibility of the user to acquire the current MVUM. This MVUM shows the National Forest System roads, National Forest System trails, and the areas on National Forest System lands in the San Carlos Ranger District that are designated for motor vehicle use pursuant to 36 CFR 212.51. This MVUM also identifies the vehicle classes allowed on each route and in each area, and any seasonal restrictions that apply on those routes and in those areas.

Designation of a road, trail, or area for motor vehicle use by a particular class of vehicle under 36 CFR 212.51 should not be interpreted as encouraging or inviting use, or implying that the road, trail or area is passable, actively maintained, or safe for travel. Motor vehicle designations include parking along designated routes and at facilities associated with designated routes when it is safe to do so and when not causing damage to National Forest System resources. Seasonal weather conditions and natural events may render designated routes and trails impassable for extended periods. Designated areas may contain dangerous or impassable terrain. Many designated roads and trails may be passable only by high-clearance vehicles or four-wheel drive vehicles. Maintenance of designated roads and trails will depend on available resources, and many may receive little maintenance.

This motor vehicle use map identifies those roads, trails, and areas designated for motor vehicle use under 36 CFR 212.51 for the purpose of enforcing the prohibition at 36 CFR 261.13. This is a limited purpose. The other public roads are shown for information and navigation purposes only and are not subject to designation under the Forest Service travel management regulation.

These designations apply only to National Forest System roads, National Forest System trails, and areas on National Forest System lands.

OPERATOR RESPONSIBILITIES

Operating a motor vehicle on National Forest System roads, National Forest System trails, and in areas on National Forest System lands carries a greater responsibility than operating that vehicle in a city or other developed setting. Not only must you know and follow all applicable traffic laws, you need to show concern for the environment as well as other forest users. The misuse of motor vehicles can lead to the temporary or permanent closure of any designated road, trail, or area. As a motor vehicle operator, you are also subject to State traffic law, including State requirements for licensing, registration, and operation of the vehicle in question.

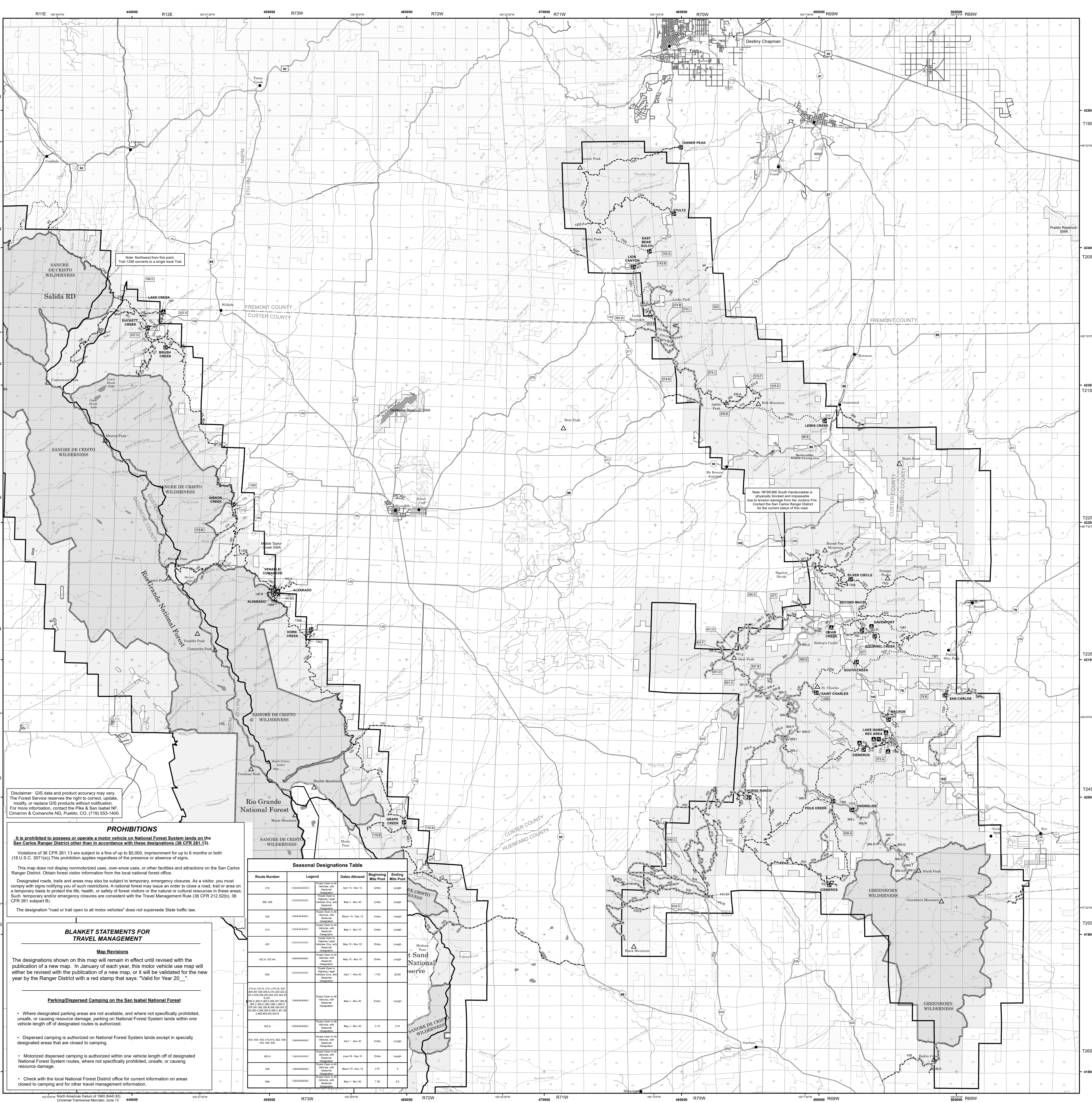
Motor vehicle use, especially off-highway vehicle use, involves inherent risks that may cause property damage, serious injury, and possibly death to participants. Drive cautiously and anticipate rough surfaces and features, such as snow, mud, vegetation, and water crossings common to remote driving conditions. By your participation, you voluntarily assume full responsibility for these damages, risks, and dangers. Take care at all times to protect yourself and those under your responsibility.

Much of the San Carlos Ranger District is remote. Medical assistance may not be readily available. Cellular telephones do not work in many areas of the San Carlos Ranger District. Take adequate food, water, first aid supplies, and other equipment appropriate for the conditions and expected weather.

ALWAYS REMEMBER TO RESPECT PRIVATE LAND! PROTECT YOUR PRIVILEGE. STAY ON DESIGNATED ROADS AND TRAILS AND IN DESIGNATED AREAS.

Read and understand this map in its entirety. If you have questions, please contact the San Carlos Ranger District for clarification.

As a motor vehicle operator on a National Forest System road, trail, or area, you must comply with this map, as well as all Federal, State, and local laws and regulations. Compliance with these rules is your responsibility.



Disclaimer: GIS data and product accuracy may vary. The Forest Service reserves the right to correct, update, modify, or replace GIS products without notification. For more information, contact the Pike & San Isabel NF, Cimarron & Comanche NG, Pueblo, CO. (719) 553-1400.

PROHIBITIONS

It is prohibited to possess or operate a motor vehicle on National Forest System lands on the San Carlos Ranger District other than in accordance with these designations (36 CFR 261.13).

Violations of 36 CFR 261.13 are subject to a fine of up to \$5,000, imprisonment for up to 6 months or both (18 U.S.C. 3571(e)). This prohibition applies regardless of the presence or absence of signs.

This map does not display nonmotorized uses, over-snow uses, or other facilities and attractions on the San Carlos Ranger District. Obtain forest visitor information from the local national forest office.

Designated roads, trails and areas may also be subject to temporary, emergency closures. As a visitor, you must comply with signs notifying you of such restrictions. A national forest may issue an order to close a road, trail or area on a temporary basis to protect the life, health, or safety of forest visitors or the natural or cultural resources in these areas. Such temporary and/or emergency closures are consistent with the Travel Management Rule (36 CFR 212.52(b)), 36 CFR 261 (subpart B).

The designation "road or trail open to all motor vehicles" does not supersede State traffic law.

Seasonal Designations Table

Route Number	Legend	Dates Allowed	Beginning Mile Post	Ending Mile Post
376	Highway, US, State, County, Other (Unpaved)	Open Year Round	0.00	0.00
380-385	Highway, US, State, County, Other (Paved)	Open Year Round	0.00	0.00
426	Highway, US, State, County, Other (Unpaved)	Open Year Round	0.00	0.00
433	Highway, US, State, County, Other (Unpaved)	Open Year Round	0.00	0.00
437	Highway, US, State, County, Other (Unpaved)	Open Year Round	0.00	0.00
422-A, 422-B	Highway, US, State, County, Other (Unpaved)	Open Year Round	0.00	0.00
634	Highway, US, State, County, Other (Unpaved)	Open Year Round	0.00	0.00
376-A, 376-B, 376-C, 376-D, 376-E, 376-F, 376-G, 376-H, 376-I, 376-J, 376-K, 376-L, 376-M, 376-N, 376-O, 376-P, 376-Q, 376-R, 376-S, 376-T, 376-U, 376-V, 376-W, 376-X, 376-Y, 376-Z	Highway, US, State, County, Other (Unpaved)	Open Year Round	0.00	0.00
422-A, 422-B, 422-C, 422-D, 422-E, 422-F, 422-G, 422-H, 422-I, 422-J, 422-K, 422-L, 422-M, 422-N, 422-O, 422-P, 422-Q, 422-R, 422-S, 422-T, 422-U, 422-V, 422-W, 422-X, 422-Y, 422-Z	Highway, US, State, County, Other (Unpaved)	Open Year Round	0.00	0.00
422-A, 422-B, 422-C, 422-D, 422-E, 422-F, 422-G, 422-H, 422-I, 422-J, 422-K, 422-L, 422-M, 422-N, 422-O, 422-P, 422-Q, 422-R, 422-S, 422-T, 422-U, 422-V, 422-W, 422-X, 422-Y, 422-Z	Highway, US, State, County, Other (Unpaved)	Open Year Round	0.00	0.00
422-A, 422-B, 422-C, 422-D, 422-E, 422-F, 422-G, 422-H, 422-I, 422-J, 422-K, 422-L, 422-M, 422-N, 422-O, 422-P, 422-Q, 422-R, 422-S, 422-T, 422-U, 422-V, 422-W, 422-X, 422-Y, 422-Z	Highway, US, State, County, Other (Unpaved)	Open Year Round	0.00	0.00
422-A, 422-B, 422-C, 422-D, 422-E, 422-F, 422-G, 422-H, 422-I, 422-J, 422-K, 422-L, 422-M, 422-N, 422-O, 422-P, 422-Q, 422-R, 422-S, 422-T, 422-U, 422-V, 422-W, 422-X, 422-Y, 422-Z	Highway, US, State, County, Other (Unpaved)	Open Year Round	0.00	0.00
422-A, 422-B, 422-C, 422-D, 422-E, 422-F, 422-G, 422-H, 422-I, 422-J, 422-K, 422-L, 422-M, 422-N, 422-O, 422-P, 422-Q, 422-R, 422-S, 422-T, 422-U, 422-V, 422-W, 422-X, 422-Y, 422-Z	Highway, US, State, County, Other (Unpaved)	Open Year Round	0.00	0.00
422-A, 422-B, 422-C, 422-D, 422-E, 422-F, 422-G, 422-H, 422-I, 422-J, 422-K, 422-L, 422-M, 422-N, 422-O, 422-P, 422-Q, 422-R, 422-S, 422-T, 422-U, 422-V, 422-W, 422-X, 422-Y, 422-Z	Highway, US, State, County, Other (Unpaved)	Open Year Round	0.00	0.00
422-A, 422-B, 422-C, 422-D, 422-E, 422-F, 422-G, 422-H, 422-I, 422-J, 422-K, 422-L, 422-M, 422-N, 422-O, 422-P, 422-Q, 422-R, 422-S, 422-T, 422-U, 422-V, 422-W, 422-X, 422-Y, 422-Z	Highway, US, State, County, Other (Unpaved)	Open Year Round	0.00	0.00
422-A, 422-B, 422-C, 422-D, 422-E, 422-F, 422-G, 422-H, 422-I, 422-J, 422-K, 422-L, 422-M, 422-N, 422-O, 422-P, 422-Q, 422-R, 422-S, 422-T, 422-U, 422-V, 422-W, 422-X, 422-Y, 422-Z	Highway, US, State, County, Other (Unpaved)	Open Year Round	0.00	0.00
422-A, 422-B, 422-C, 422-D, 422-E, 422-F, 422-G, 422-H, 422-I, 422-J, 422-K, 422-L, 422-M, 422-N, 422-O, 422-P, 422-Q, 422-R, 422-S, 422-T, 422-U, 422-V, 422-W, 422-X, 422-Y, 422-Z	Highway, US, State, County, Other (Unpaved)	Open Year Round	0.00	0.00
422-A, 422-B, 422-C, 422-D, 422-E, 422-F, 422-G, 422-H, 422-I, 422-J, 422-K, 422-L, 422-M, 422-N, 422-O, 422-P, 422-Q, 422-R, 422-S, 422-T, 422-U, 422-V, 422-W, 422-X, 422-Y, 422-Z	Highway, US, State, County, Other (Unpaved)	Open Year Round	0.00	0.00
422-A, 422-B, 422-C, 422-D, 422-E, 422-F, 422-G, 422-H, 422-I, 422-J, 422-K, 422-L, 422-M, 422-N, 422-O, 422-P, 422-Q, 422-R, 422-S, 422-T, 422-U, 422-V, 422-W, 422-X, 422-Y, 422-Z	Highway, US, State, County, Other (Unpaved)	Open Year Round	0.00	0.00
422-A, 422-B, 422-C, 422-D, 422-E, 422-F, 422-G, 422-H, 422-I, 422-J, 422-K, 422-L, 422-M, 422-N, 422-O, 422-P, 422-Q, 422-R, 422-S, 422-T, 422-U, 422-V, 422-W, 422-X, 422-Y, 422-Z	Highway, US, State, County, Other (Unpaved)	Open Year Round	0.00	0.00
422-A, 422-B, 422-C, 422-D, 422-E, 422-F, 422-G, 422-H, 422-I, 422-J, 422-K, 422-L, 422-M, 422-N, 422-O, 422-P, 422-Q, 422-R, 422-S, 422-T, 422-U, 422-V, 422-W, 422-X, 422-Y, 422-Z	Highway, US, State, County, Other (Unpaved)	Open Year Round	0.00	0.00
422-A, 422-B, 422-C, 422-D, 422-E, 422-F, 422-G, 422-H, 422-I, 422-J, 422-K, 422-L, 422-M, 422-N, 422-O, 422-P, 422-Q, 422-R, 422-S, 422-T, 422-U, 422-V, 422-W, 422-X, 422-Y, 422-Z	Highway, US, State, County, Other (Unpaved)	Open Year Round	0.00	0.00
422-A, 422-B, 422-C, 422-D, 422-E, 422-F, 422-G, 422-H, 422-I, 422-J, 422-K, 422-L, 422-M, 422-N, 422-O, 422-P, 422-Q, 422-R, 422-S, 422-T, 422-U, 422-V, 422-W, 422-X, 422-Y, 422-Z	Highway, US, State, County, Other (Unpaved)	Open Year Round	0.00	0.00
422-A, 422-B, 422-C, 422-D, 422-E, 422-F, 422-G, 422-H, 422-I, 422-J, 422-K, 422-L, 422-M, 422-N, 422-O, 422-P, 422-Q, 422-R, 422-S, 422-T, 422-U, 422-V, 422-W, 422-X, 422-Y, 422-Z	Highway, US, State, County, Other (Unpaved)	Open Year Round	0.00	0.00
422-A, 422-B, 422-C, 422-D, 422-E, 422-F, 422-G, 422-H, 422-I, 422-J, 422-K, 422-L, 422-M, 422-N, 422-O, 422-P, 422-Q, 422-R, 422-S, 422-T, 422-U, 422-V, 422-W, 422-X, 422-Y, 422-Z	Highway, US, State, County, Other (Unpaved)	Open Year Round	0.00	0.00
422-A, 422-B, 422-C, 422-D, 422-E, 422-F, 422-G, 422-H, 422-I, 422-J, 422-K, 422-L, 422-M, 422-N, 422-O, 422-P, 422-Q, 422-R, 422-S, 422-T, 422-U, 422-V, 422-W, 422-X, 422-Y, 422-Z	Highway, US, State, County, Other (Unpaved)	Open Year Round	0.00	0.00
422-A, 422-B, 422-C, 422-D, 422-E, 422-F, 422-G, 422-H, 422-I, 422-J, 422-K, 422-L, 422-M, 422-N, 422-O, 422-P, 422-Q, 422-R, 422-S, 422-T, 422-U, 422-V, 422-W, 422-X, 422-Y, 422-Z	Highway, US, State, County, Other (Unpaved)	Open Year Round	0.00	0.00
422-A, 422-B, 422-C, 422-D, 422-E, 422-F, 422-G, 422-H, 422-I, 422-J, 422-K, 422-L, 422-M, 422-N, 422-O, 422-P, 422-Q, 422-R, 422-S, 422-T, 422-U, 422-V, 422-W, 422-X, 422-Y, 422-Z	Highway, US, State, County, Other (Unpaved)	Open Year Round	0.00	0.00
422-A, 422-B, 422-C, 422-D, 422-E, 422-F, 422-G, 422-H, 422-I, 422-J, 422-K, 422-L, 422-M, 422-N, 422-O, 422-P, 422-Q, 422-R, 422-S, 422-T, 422-U, 422-V, 422-W, 422-X, 422-Y, 422-Z	Highway, US, State, County, Other (Unpaved)	Open Year Round	0.00	0.00
422-A, 422-B, 422-C, 422-D, 422-E, 422-F, 422-G, 422-H, 422-I, 422-J, 422-K, 422-L, 422-M, 422-N, 422-O, 422-P, 422-Q, 422-R, 422-S, 422-T, 422-U, 422-V, 422-W, 422-X, 422-Y, 422-Z	Highway, US, State, County, Other (Unpaved)	Open Year Round	0.00	0.00
422-A, 422-B, 422-C, 422-D, 422-E, 422-F, 422-G, 422-H, 422-I, 422-J, 422-K, 422-L, 422-M, 422-N, 422-O, 422-P, 422-Q, 422-R, 422-S, 422-T, 422-U, 422-V, 422-W, 422-X, 422-Y, 422-Z	Highway, US, State, County, Other (Unpaved)	Open Year Round	0.00	0.00
422-A, 422-B, 422-C, 422-D, 422-E, 422-F, 422-G, 422-H, 422-I, 422-J, 422-K, 422-L, 422-M, 422-N, 422-O, 422-P, 422-Q, 422-R, 422-S, 422-T, 422-U, 422-V, 422-W, 422-X, 422-Y, 422-Z	Highway, US, State, County, Other (Unpaved)	Open Year Round	0.00	0.00
422-A, 422-B, 422-C, 422-D, 422-E, 422-F, 422-G, 422-H, 422-I, 422-J, 422-K, 422-L, 422-M, 422-N, 422-O, 422-P, 422-Q, 422-R, 422-S, 422-T, 422-U, 422-V, 422-W, 422-X, 422-Y, 422-Z	Highway, US, State, County, Other (Unpaved)	Open Year Round	0.00	0.00
422-A, 422-B, 422-C, 422-D, 422-E, 422-F, 422-G, 422-H, 422-I, 422-J, 422-K, 422-L, 422-M, 422-N, 422-O, 422-P, 422-Q, 422-R, 422-S, 422-T, 422-U, 422-V, 422-W, 422-X, 422-Y, 422-Z	Highway, US, State, County, Other (Unpaved)	Open Year Round	0.00	0.00
422-A, 422-B, 422-C, 422-D, 422-E, 422-F, 422-G, 422-H, 422-I, 422-J, 422-K, 422-L, 422-M, 422-N, 422-O, 422-P, 422-Q, 422-R, 422-S, 422-T, 422-U, 422-V, 422-W, 422-X, 422-Y, 422-Z	Highway, US, State, County, Other (Unpaved)	Open Year Round	0.00	0.00
422-A, 422-B, 422-C, 422-D, 422-E, 422-F, 422-G, 422-H, 422-I, 422-J, 422-K, 422-L, 422-M, 422-N, 422-O, 422-P, 422-Q, 422-R, 422-S, 422-T, 422-U, 422-V, 422-W, 422-X, 422-Y, 422-Z	Highway, US, State, County, Other (Unpaved)	Open Year Round	0.00	0.00
422-A, 422-B, 422-C, 422-D, 422-E, 422-F, 422-G, 422-H, 422-I, 422-J, 422-K, 422-L, 422-M, 422-N, 422-O, 422-P, 422-Q, 422-R, 422-S, 422-T, 422-U, 422-V, 422-W, 422-X, 422-Y, 422-Z	Highway, US, State, County, Other (Unpaved)	Open Year Round	0.00	0.00
422-A, 422-B, 422-C, 422-D, 422-E, 422-F, 422-G, 422-H, 422-I, 422-J, 422-K, 422-L, 422-M, 422-N, 422-O, 422-P, 422-Q, 422-R, 422-S, 422-T, 422-U, 422-V, 422-W, 422-X, 422-Y, 422-Z	Highway, US, State, County, Other (Unpaved)	Open Year Round	0.00	0.00
422-A, 422-B, 422-C, 422-D, 422-E, 422-F, 422-G, 422-H, 422-I, 422-J, 422-K, 422-L, 422-M, 422-N, 422-O, 422-P, 422-Q, 422-R, 422-S, 422-T, 422-U, 422-V, 422-W, 422-X, 422-Y, 422-Z	Highway, US, State, County, Other (Unpaved)	Open Year Round	0.00	0.00
422-A, 422-B, 422-C, 422-D, 422-E, 422-F, 422-G, 422-H, 422-I, 422-J, 422-K, 422-L, 422-M, 422-N, 422-O, 422-P, 422-Q, 422-R, 422-S, 422-T, 422-U, 422-V, 422-W, 422-X, 422-Y, 422-Z	Highway, US, State, County, Other (Unpaved)	Open Year Round	0.00	0.00
422-A, 422-B, 422-C, 422-D, 422-E, 422-F, 422-G, 422-H, 422-I, 422-J, 422-K, 422-L, 422-M, 422-N, 422-O, 422-P, 422-Q, 422-R, 422-S, 422-T, 422-U, 422-V, 422-W, 422-X, 422-Y, 422-Z	Highway, US, State, County, Other (Unpaved)	Open Year Round	0.00	0.00
422-A, 422-B, 422-C, 422-D, 422-E, 422-F, 422-G, 422-H, 422-I, 422-J, 422-K, 422-L, 422-M, 422-N, 422-O, 422-P, 422-Q, 422-R, 422-S, 422-T, 422-U, 422-V, 422-W, 422-X, 422-Y, 422-Z	Highway, US, State, County, Other (Unpaved)	Open Year Round	0.00	0.00
422-A, 422-B, 422-C, 422-D, 422-E, 422-F, 422-G, 422-H, 422-I, 422-J, 422-K, 422-L, 422-M, 422-N, 422-O, 422-P, 422-Q, 422-R, 422-S, 422-T, 422-U, 422-V, 422-W, 422-X, 422-Y, 422-Z	Highway, US, State, County, Other (Unpaved)	Open Year Round	0.00	0.00
422-A, 422-B, 422-C, 422-D, 422-E, 422-F, 422-G, 422-H, 422-I, 422-J, 422-K, 422-L, 422-M, 422-N, 422-O, 422-P, 422-Q, 422-R, 422-S, 422-T, 422-U, 422-V, 422-W, 422-X, 422-Y, 422-Z	Highway, US, State, County, Other (Unpaved)	Open Year Round	0.00	0.00
422-A, 422-B, 422-C, 422-D, 422-E, 422-F, 422-G, 422-H, 422-I, 422-J, 422-K, 422-L, 422-M, 422-N, 422-O, 422-P, 422-Q, 422-R, 422-S, 422-T, 422-U, 422-V, 422-W, 422-X, 422-Y, 422-Z	Highway, US, State, County, Other (Unpaved)	Open Year Round	0.00	0.00
422-A, 422-B, 422-C, 422-D, 422-E, 422-F, 422-G, 422-H, 422-I, 422-J, 422-K, 422-L, 422-M, 422-N, 422-O, 422-P, 422-Q, 422-R, 422-S, 422-T, 422-U, 422-V, 422-W, 422-X, 422-Y, 422-Z	Highway, US, State, County, Other (Unpaved)	Open Year Round	0.00	0.00
422-A, 422-B, 422-C, 422-D, 422-E, 422-F, 422-G, 422-H, 422-I, 422-J, 422-K, 422-L, 422-M, 422-N, 422-O, 422-P, 422-Q, 422-R, 422-S, 422-T, 422-U, 422-V, 422-W, 422-X, 422-Y, 422-Z	Highway, US, State, County, Other (Unpaved)	Open Year Round	0.00	0.00
422-A, 422-B, 422-C, 422-D, 422-E, 422-F, 422-G, 422-H, 422-I, 422-J, 422-K, 422-L, 422-M, 422-N, 422-O, 422-P, 422-Q, 422-R, 422-S, 422-T, 422-U, 422-V, 422-W, 422-X, 422-Y, 422-Z	Highway, US, State, County, Other (Unpaved)	Open Year Round	0.00	0.00
422-A, 422-B, 422-C, 422-D, 422-E, 422-F, 422-G, 422-H, 422-I, 422-J, 422-K, 422-L, 422-M, 422-N, 422-O, 422-P, 422-Q, 422-R, 422-S, 422-T, 422-U, 422-V, 422-W, 422-X, 422-Y, 422-Z	Highway, US, State, County, Other (Unpaved)	Open Year Round	0.00	0.00
422-A, 422-B, 422-C, 422-D, 422-E, 422-F, 422-G, 422-H, 422-I, 422-J, 422-K, 422-L, 422-M, 422-N, 422-O, 422-P, 422-Q, 422-R, 422-S, 422-T, 422-U, 422-V, 422-W, 422-X, 422-Y, 422-Z	Highway, US, State, County, Other (Unpaved)	Open Year Round	0.00	0.00
422-A, 422-B, 422-C, 422-D, 422-E, 42				