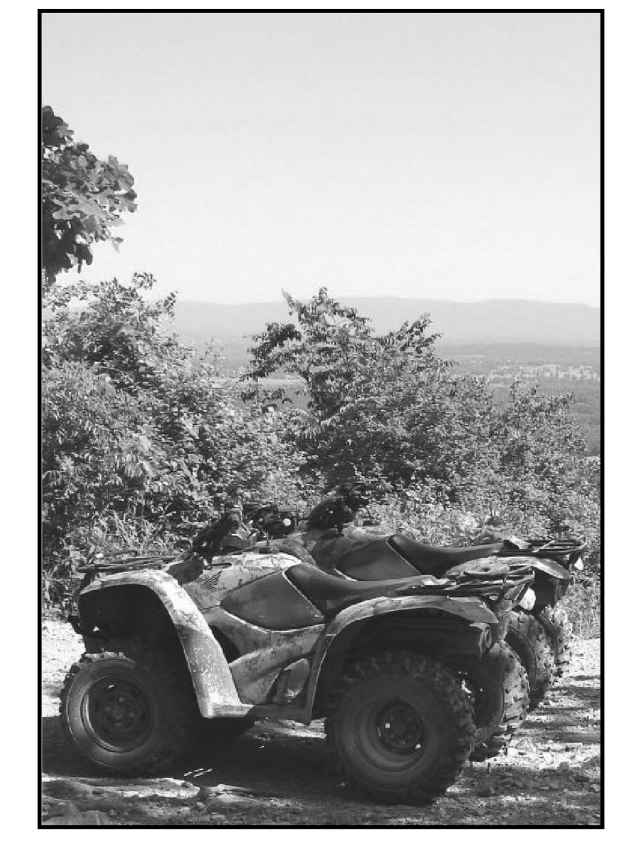


Motor Vehicle Use Map

Ouachita National Forest
Jessieville/Winona/Fourche
Ranger District



America's Great Outdoors

ARKANSAS APRIL 01 2026

Forest Service
United States Department of Agriculture

PURPOSE AND CONTENTS OF THIS MAP

The designations shown on this motor vehicle use map (MVUM) were made by the responsible official pursuant to 36 CFR 212.51, are effective as of the date on the front cover of this MVUM, and will remain in effect until superseded by next year's MVUM.

Daniel Olson, Forest Supervisor
Ouachita National Forest

It is the responsibility of the user to acquire the current MVUM. This MVUM shows the National Forest System roads, National Forest System trails, and the areas on National Forest System lands in the Ouachita National Forest that are designated for motor vehicle use pursuant to 36 CFR 212.51. The MVUM also identifies the vehicle classes allowed on each route and in each area, and any seasonal restrictions that apply on those routes and in those areas.

Designation of a road, trail, or area for motor vehicle use by a particular class of vehicle under 36 CFR 212.51 should not be interpreted as encouraging or inviting use or implying that the road, trail, or area is passable, actively maintained, or safe for travel. Motor vehicle designations include parking along designated routes and at facilities associated with designated routes when it is safe to do so and when not causing damage to National Forest System resources. Seasonal weather conditions and natural events may render designated roads and trails impassable for extended periods. Designated areas may contain dangerous or impassable terrain. Many designated roads and trails may be passable only by high-clearance vehicles or four-wheel-drive vehicles. Maintenance of designated roads and trails will depend on available resources, and many may receive little maintenance.

This motor vehicle use map identifies those roads, trails, and areas designated for the motor vehicle use under 36 CFR 212.51 for the purpose of enforcing the prohibition at 36 CFR 261.13. This is a limited purpose. The other public roads are shown for information and navigation purposes only and are not subject to designation under the Forest Service travel management regulation.

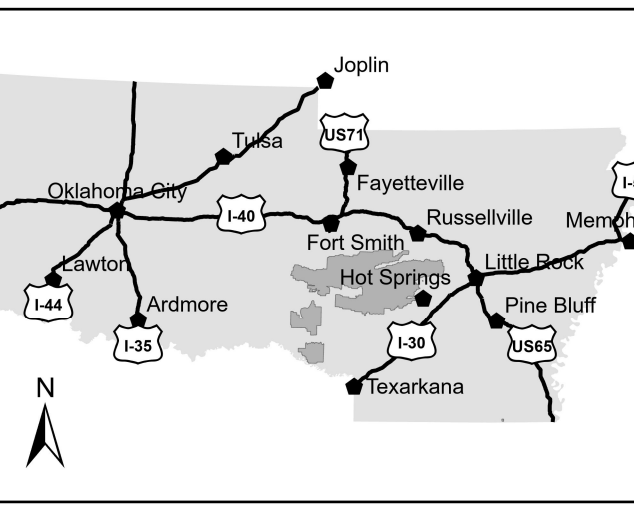
These designations apply only to National Forest System roads, National Forest System trails, and areas on National Forest System lands.

Legend

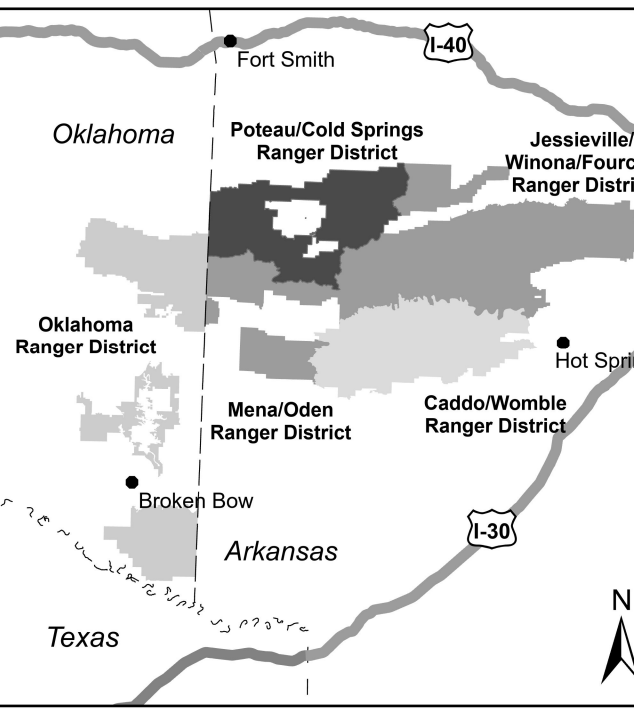
- Roads Open to Highway Legal Vehicles
- Roads Open to All Vehicles
- Trails Open to All Vehicles
- Trails Open to Vehicles 50" or Less in Width
- Trails Open to Wheeled Vehicles
- Trails Open to Motorcycles Only
- Trails Open to E-Bikes Only
- Special Vehicle Designation (See Table)
- Seasonal Designation (See Table)
- Game Retrieval, Both Sides
- Game Retrieval, Left Side
- Game Retrieval, Right Side (See table for GR information)
- Interstate
- Highways, U.S. State
- Other Public Roads
- Other Public Trails
- Short Route Identifier
- FS Campground
- Picnic Area
- Motorized Trailhead
- Information Site
- Peaks
- Forest or Unit Boundary
- National Forest System Lands
- Non-National Forest System Lands within the National Forest
- Wilderness Areas
- Political Boundary
- Township and Range Lines
- Section Lines
- Lakes and Rivers

0 0.5 1 2 3 4 5 Miles

VICINITY MAP



INDEX MAP



INFORMATION SOURCES

Ouachita National Forest Supervisor's Office
100 Reserve Street
Hot Springs, AR 71901
(501) 321-5202

Jessieville Office
8607 North HWY 7
Jessieville, AR 71949
(501) 984-5313

THE USDA IS AN EQUAL OPPORTUNITY PROVIDER, EMPLOYER, AND LENDER.

In accordance with Federal civil rights law and U.S. Department of Agriculture (USDA) civil rights regulations and policies, the USDA, its Agencies, offices, and employees, and institutions participating in or administering USDA programs are prohibited from discriminating based on race, color, national origin, religion, sex, disability, age, marital status, family/parental status, income derived from a public assistance program, political beliefs, or reprisal or retaliation for prior civil rights activity, in any program or activity conducted or funded by USDA (not all bases apply to all programs). Remedies and complaint filing deadlines vary by program or incident.

Persons with disabilities who require alternative means of communication for program information (e.g., Braille, large print, audiotape, American Sign Language, etc.) should contact the State or local Agency that administers the program or contact USDA through the Telecommunications Relay Service at 711 (voice and TTY). Additionally, program information may be made available in languages other than English.

To file a program discrimination complaint, complete the USDA Program Discrimination Complaint Form, AD-3027, found online at www.usda.gov or at any USDA office, and mail it to the Office of the Assistant Secretary for Civil Rights, 1400 Independence Avenue, SW, Mail Stop 9410, Washington, D.C. 20250-9410; (2) fax (202) 680-7442; or (3) email: program.intake@usda.gov.

USDA is an equal opportunity provider, employer, and lender.
FS-873-19

OPERATOR RESPONSIBILITIES

Operating a motor vehicle on National Forest System roads, National Forest System trails, and in areas on National Forest System lands carries a greater responsibility than operating that vehicle in a city or other developed setting. Not only must you know and follow applicable traffic laws, you need to show concern for the environment as well as other forest users. The misuse of motor vehicles can lead to the temporary or permanent closure of any designated road, trail, or area. As a motor vehicle operator, you are also subject to State traffic law, including State requirements for licensing, registration, and operation of the vehicle in question.

Motor vehicle use, especially off-highway vehicle use, involves inherent risks that may cause property damage, serious injury, and possibly death to participants. Drive cautiously and anticipate adverse surfaces and features, such as snow, mud, vegetation, and water crossings common to remote driving conditions. By your participation, you voluntarily assume full responsibility for these damages, risks, and dangers. Take care at all times to protect yourself and those around your responsibility. Much of the Ouachita National Forest is remote. Medical assistance may not be readily available. Cellular telephones do not work in many areas of the Ouachita National Forest. Take adequate food, water, first-aid supplies, and other equipment appropriate for the conditions and expected weather.

ALWAYS REMEMBER TO RESPECT PRIVATE LAND! PROTECT YOUR PRIVILEGE. STAY ON DESIGNATED ROADS AND TRAILS AND IN DESIGNATED AREAS.

Read and understand this map in its entirety. If you have questions, please contact the Ouachita National Forest for clarification.

As a motor vehicle operator on a National Forest System road, trail, or area you must comply with this map, as well as all Federal, State, and local laws and regulations. Compliance with these rules is your responsibility.

EXPLANATION OF LEGEND ITEMS

Roads Open to Highway Legal Vehicles Only:
These roads are open only to motor vehicles licensed under State law for general operation on all public roads within the state.

Roads Open to All Vehicles:
These roads are open to all motor vehicles, including smaller off-highway vehicles that may not be licensed for highway use (but not to oversize or overweight vehicles under State traffic law).

Trails Open to All Vehicles:
These trails are open to all motor vehicles, including both highway legal and nonhighway legal vehicles.

Trails Open to Vehicles 50 inches or Less in Width:
Trails open only to motor vehicles less than 50 inches in width at the widest point on the vehicle.

Trails Open to Wheeled Vehicles 50" or less in Width:
These trails are open only to wheeled, motor vehicles less than 50 inches in width at the widest point on the vehicle.

Trails Open to Motorcycles Only:
These trails are open only to motorcycles. Sidecars are not permitted.

Trails Open to E-Bikes Only:
The Forest Service manages e-bikes as a motor vehicle. Class 1, 2, and 3 e-bikes are allowed on roads designated for any classes of motor vehicles and roads designated for motorized mixed use. Class 1, 2, and 3 e-bikes are also allowed on trails open to any classes of motor vehicles, including motorcycles, and trails designated for those classes of e-bikes. Refer to the Seasonal and Special Vehicle Designation Table for roads and trails that have restrictions on the use of e-bikes.

Special Vehicle Designation:

This symbol indicates the road or trail is open to classes of vehicles other than those listed above. Refer to the Seasonal and Special Designation Table for further instructions.

Seasonal Designation:

This symbol, used in conjunction with one of the other road or trail symbols, indicates that the road or trail is open only during certain portions of the year. Refer to Seasonal and Special Designation Table for further instructions.

Game Retrieval:

Game Retrieval, Both Sides
Game Retrieval, Left Side
Game Retrieval, Right Side
This symbol is used along with a designated road or trail to indicate limited cross-county motor vehicle use within a specific distance of that route, solely for the purpose of game retrieval. The dots indicate where this activity is permitted. They may be on the left, right, or both sides of the route. Refer to the Game Retrieval Table for specifics.

Other Public Roads and Trails:

Interstate
Highways, U.S. State, County
Other Public Roads
Other Public Trails
These symbols are used to show routes the Forest Service does not have jurisdiction over and has not designated for motorized use. These symbols are part of the reference layers showing connections to towns and cities outside the forest boundary.

Short Route Identifier:

(70332)
This symbol is used for roads that are too short to show a symbol type on the map. The symbol contains the number of the road or trail. Users should refer to the corresponding number in the Short Route Table for designation information.

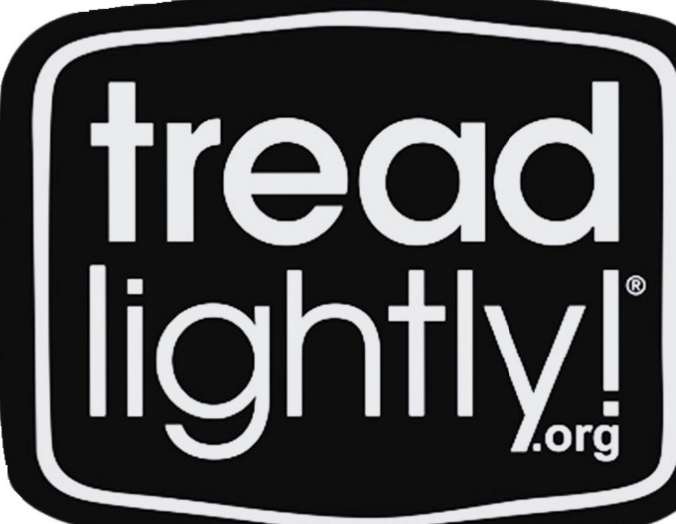
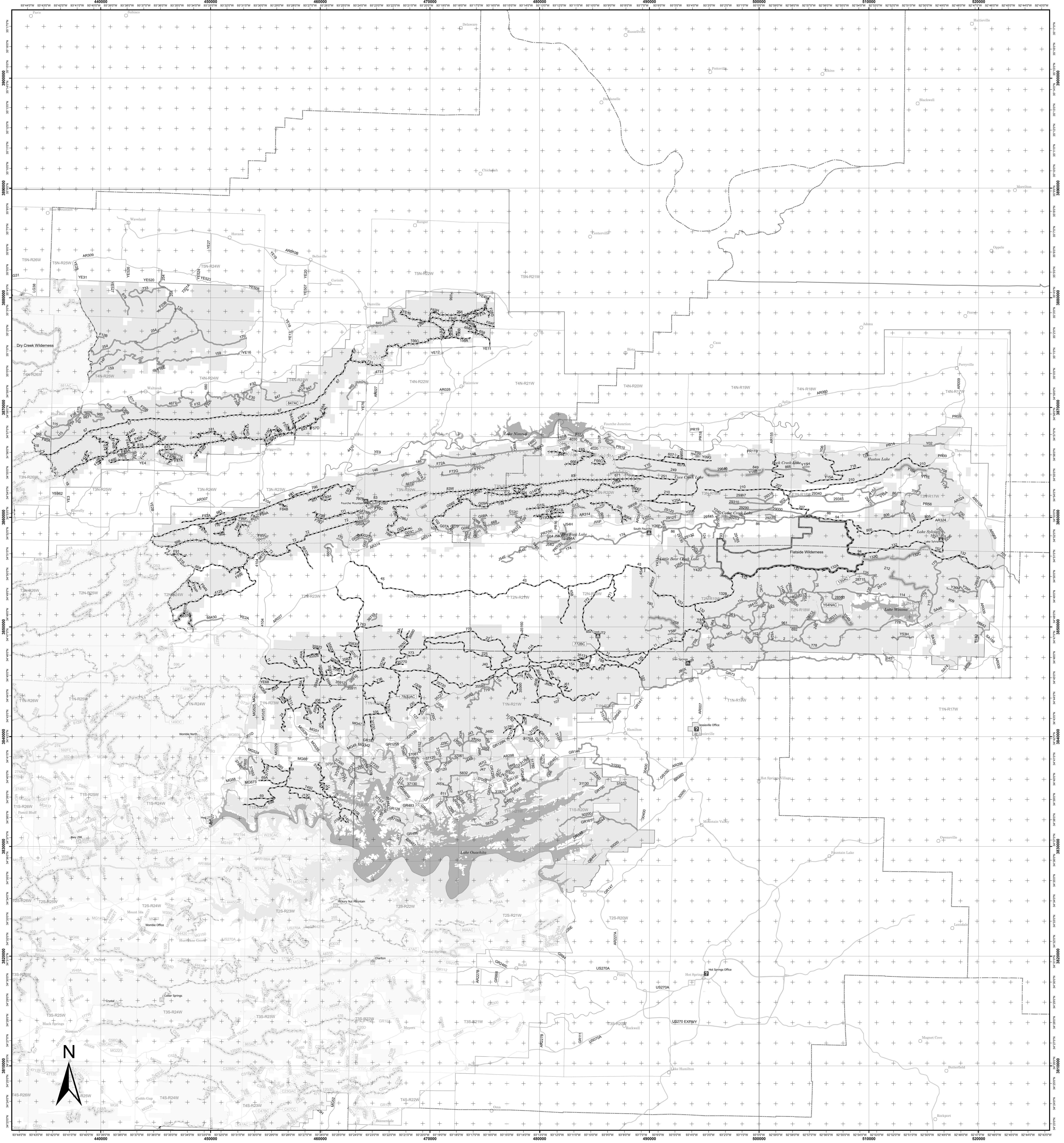
Milepost Marker:

This symbol is used to display the beginning and ending mileposts of a road that has a change in the designation but not the symbology.

Motorized Trail Access:

This symbol indicates a trailhead for access to a motorized route. Not all motorized routes have trailheads and those that do may range from primitive to developed.

Areas Open to Cross Country Travel:
These are areas on National Forest System land that allow cross-country travel by motorized vehicles. Specific vehicle classes and seasonal designations may be indicated in the Seasonal and Special Designation Table.



GET THE DIGITAL MAP!

Scan QR code or enter the URL to view a digital geo-referenced copy of this map (GeoPDF) and associated tables on your device.



www.fs.usda.gov/r08/ouachita/maps-guides



North American Datum of 1983 (NAD 83)
Universal Transverse Mercator, Zone 15N