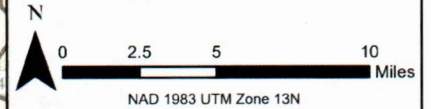




Product Map
 Pecos-Las Vegas R.D.
 Forest Service
 U.S. Dept. of Agriculture
 Santa Fe National Forest

- Forest Service Ranger Station
- Santa Fe National Forest Ranger District Boundary
- Product Removal May Be Permitted*
- Product Removal Not Allowed April 1 to Aug 31
- Product Removal Not Permitted
- Motor Vehicle Use Map (MVUM) Road

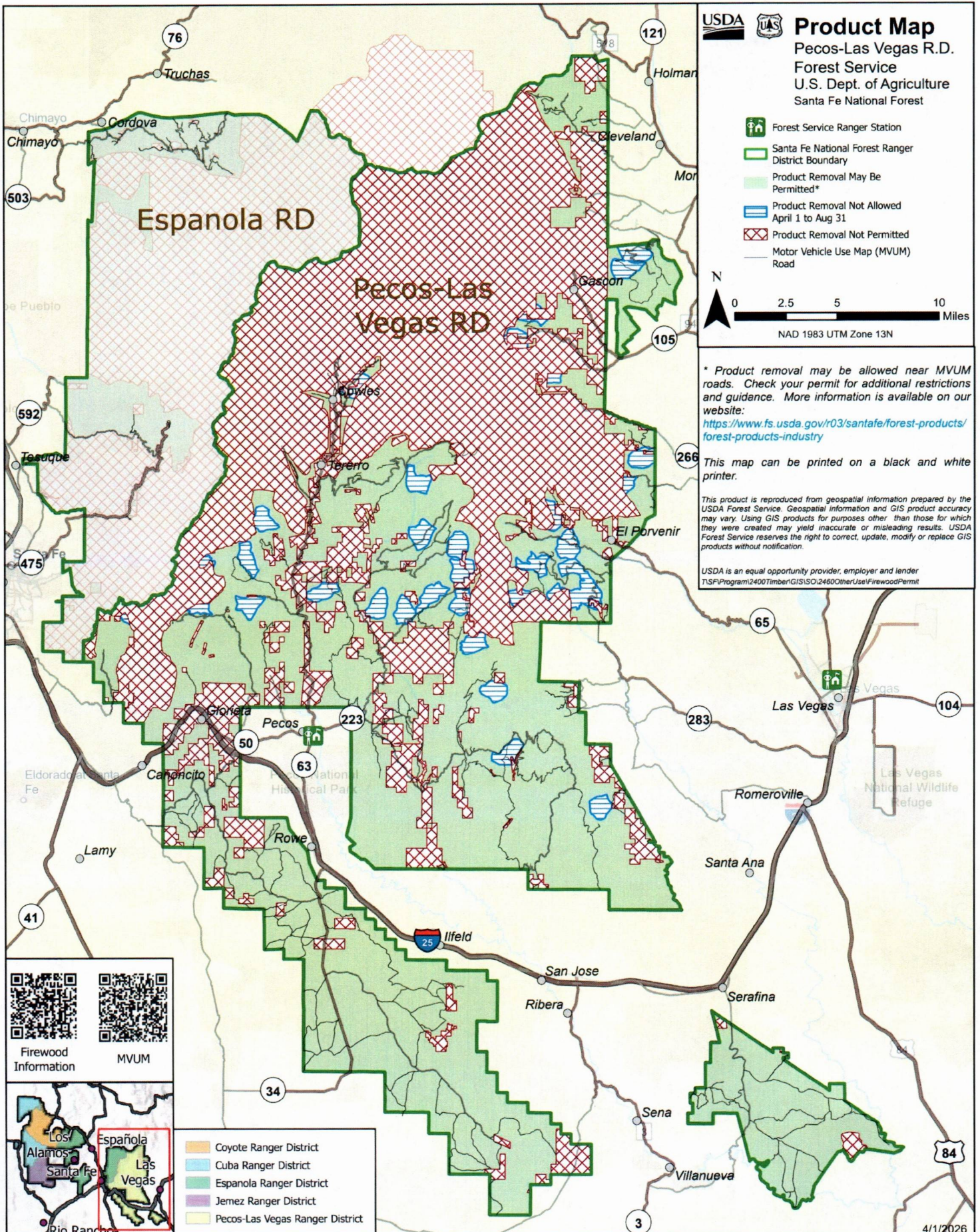


* Product removal may be allowed near MVUM roads. Check your permit for additional restrictions and guidance. More information is available on our website:
<https://www.fs.usda.gov/r03/santafe/forest-products/forest-products-industry>

This map can be printed on a black and white printer.

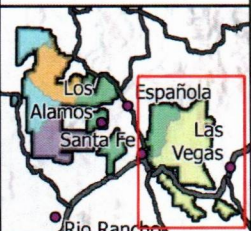
This product is reproduced from geospatial information prepared by the USDA Forest Service. Geospatial information and GIS product accuracy may vary. Using GIS products for purposes other than those for which they were created may yield inaccurate or misleading results. USDA Forest Service reserves the right to correct, update, modify or replace GIS products without notification.

USDA is an equal opportunity provider, employer and lender
 TSP/Program/2400/Timber/GIS/ISO/2460/Other/Use/Firewood/Permit



Firewood Information

MVUM



- Coyote Ranger District
- Cuba Ranger District
- Espanola Ranger District
- Jemez Ranger District
- Pecos-Las Vegas Ranger District