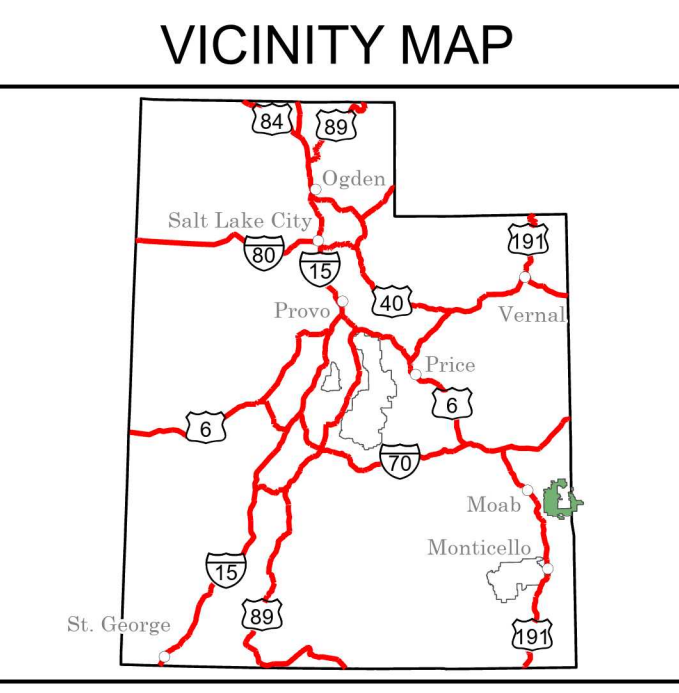


**Travel Map**  
Manti-La Sal National Forest  
Moab and Monticello  
Ranger Districts



**INFORMATION SOURCES**

**Manti-La Sal National Forest Supervisor's Office**  
599 West Price River Drive  
Price, UT 84501  
435-637-2817

**Ferron-Price Office**  
115 West Canyon Road  
Ferron, UT 84523  
435-384-2372

**Moab Office**  
62 East 100 North  
Moab, UT 84532  
435-259-7155

**Monticello Office**  
432 E Center St  
Monticello, UT 84535  
435-587-2041

**Sanpete Office**  
540 North Main Street  
Ephraim, UT 84627  
435-283-4151

For Specific Road and Trail Opening Dates check  
<http://www.fs.usda.gov/mantilasal/>

For Emergency Services  
Dial 911

**Emergency Contacts**

**EMERGENCIES ONLY:** 911  
Report Fires to Moab Dispatch: 435-259-1850  
Search and Rescue:  
Grand County Sheriff: 435-250-8115  
San Juan County Sheriff: 435-587-2237 (Monticello) or 435-672-2429 (Bluff)  
Montrose County Sheriff: 970-252-4023; 970-249-6606

**BLANKET STATEMENTS FOR TRAVEL MANAGEMENT**

Motor vehicle use off of designated roads and trails for the purpose of dispersed camping is permitted for up to 150 feet from the centerline of the road or trail for the period 01/01 to 12/31.

E-bikes are allowed on motorized trails. E-bikes, regardless of class, are not allowed on non-motorized trails.

Complete route numbers begin with the number 5 for the Manti-La Sal National Forest. Route numbers shown on the table include this prefix (ex. 50014). Route numbers shown the map do not (ex. 0014).

**HOW TO USE THIS MAP**

This Travel Map is a companion map to the Forest Motor Vehicle Use Map (MVUM) and Forest Visitor Map. It is intended to give more information about the landscape where roads and motorized trails are located, and provide better wayfinding for the user than the MVUM. This Travel Map does not display non-motorized trails or detailed information regarding features and attractions that are found on the Forest Visitor Map. The MVUM is published annually and identifies the roads, trails, and areas where motor vehicles are allowed. In general, motorized travel off designated roads and trails is prohibited. Please see the MVUM for information on this type of activity.

It is the responsibility of the user to acquire the current MVUM. This MVUM shows the National Forest System roads, National Forest System trails, and the areas on National Forest System lands in the Moab Ranger District that are designated for motor vehicle use pursuant to 36 CFR 212.51. This MVUM also identifies the vehicle classes allowed on each route and in each area and any seasonal restrictions that apply on those routes and in those areas.

Designation of a road, trail, or area for motor vehicle use by a particular class of vehicle under 36 CFR 212.51 should not be interpreted as encouraging or inviting use, or to imply that the road, trail, or area is passable, actively maintained, or safe for travel. Motor vehicle designations include parking along designated routes and at facilities associated with designated routes when it is safe to do so and when not causing damage to National Forest System resources. Seasonal weather conditions and natural events may render designated roads and trails impassable for extended periods. Designated areas may contain dangerous or impassable terrain. Many designated roads and trails may be passable only by high-clearance vehicles or four-wheel drive vehicles. Maintenance of designated roads and trails will depend on available resources, and many may receive little maintenance.

This motor vehicle use map identifies those roads, trails, and areas designated for the motor vehicle use under 36 CFR 212.51 for the purpose of enforcing the prohibition at 36 CFR 261.13. This is a limited purpose. The other public roads are shown for information and navigation purposes only and are not subject to designation under the Forest Service travel management regulation.

**These designations apply only to National Forest System roads, National Forest System trails, and areas on National Forest System lands.**

**PROHIBITIONS**

It is prohibited to possess or operate a motor vehicle on National Forest System lands on the Manti-La Sal National Forest other than in accordance with these designations (36 CFR 261.13).

Violations of 36 CFR 261.13 are subject to a fine of up to \$5,000 or imprisonment for up to 6 months or both (18 U.S.C. 3571(e)). This prohibition applies regardless of the presence or absence of signs.

This map does not display nonmotorized uses, over-snow uses, or other facilities and attractions on the Moab Ranger District. Obtain a forest visitor map for more complete information.

Designated roads, trails, and areas may also be subject to temporary, emergency closures, and visitors must comply with signs notifying them of such restrictions. A national forest may issue an order to close a road, trail, or area on a temporary basis to protect the life, health or safety of forest visitors or the natural or cultural resources in these areas. Such a temporary and/or emergency closures are consistent with the Travel Management Rule (36 CFR 212.52 (b); 36 CFR 261 subpart B).

The designation "road or trail open to all motor vehicles" does not supersede vehicle size or weight limits imposed through State traffic law.

**OPERATOR RESPONSIBILITIES**

Operating a motor vehicle on National Forest System roads, National Forest System trails, and in areas on National Forest System lands carries a greater responsibility than operating that vehicle in a city or other developed setting. Not only must the motor vehicle operators know and follow all applicable traffic laws, but they need to show concern for the environment as well as other forest users. The misuse of motor vehicles can lead to the temporary or permanent closure of any designated road, trail, or area. Operators of motor vehicles are subject to State traffic law, including State requirements for licensing, registration, and operation of the vehicle in question.

Motor vehicle use, especially off-highway vehicle use, involves inherent risks that may cause property damage, serious injury, and possibly death to participants. Riders should drive cautiously and anticipate rough surfaces and features, such as snow, mud, vegetation, and water crossings common to remote driving conditions. Participants voluntarily assume full responsibility for these damages, risks, and dangers. Motor vehicle operators should take care at all times to protect themselves and those under their responsibility.

Much of the Manti-La Sal National Forest is remote, and medical assistance may not be readily available. Cellular telephones do not work in many areas of the Moab Ranger District. Operators should take adequate food, water, first aid supplies, and other equipment appropriate for the conditions and expected weather.

**ALWAYS REMEMBER TO RESPECT PRIVATE LAND! PROTECT YOUR PRIVILEGE. STAY ON DESIGNATED ROADS AND TRAILS AND IN DESIGNATED AREAS.**

Read and understand this map in its entirety. If you have questions please contact the Manti-La Sal National Forest for clarification.

Road, trail, and area users must comply with this map, as well as all Federal, State, and local laws and regulations. Compliance with these rules is the responsibility of the user.

USDA is an equal opportunity provider and employer.

**Legend**

- Roads Open to Highway Legal Vehicles
- Roads Open to all Vehicles
- Trails Open to all Vehicles
- Trails Open to Vehicles 50" or Less in Width
- Trails Open to Wheeled Vehicles 50" or Less in Width
- Trails Open to Motorcycles Only
- Special Vehicle Designation (See Table)
- Seasonal Designation (See Table)
- Interstate
- Highways, US, State
- County & Other Public Roads
- Other Public Trails
- Short Route Identifier
- ▲ Milepost Marker
- ▲ FS Campgrounds
- ▲ Picnic Area
- ▲ Motorized Trailhead
- ▲ Information Site
- ▲ Peaks
- ▲ Forest Boundary
- ▲ National Forest System Lands
- ▲ Non-National Forest System Lands within the National Forest
- ▲ Political Boundary
- ▲ Township and Range Lines
- ▲ Section Lines
- ▲ Large Lakes and Rivers
- ▲ BLM
- ▲ NPS / OTHER FED
- ▲ PRIVATE OR UNDESIGNATED
- ▲ STATE LAND - PUBLIC USE
- ▲ STATE LAND OTHER

0 0.5 1 2 3 4 5 Miles

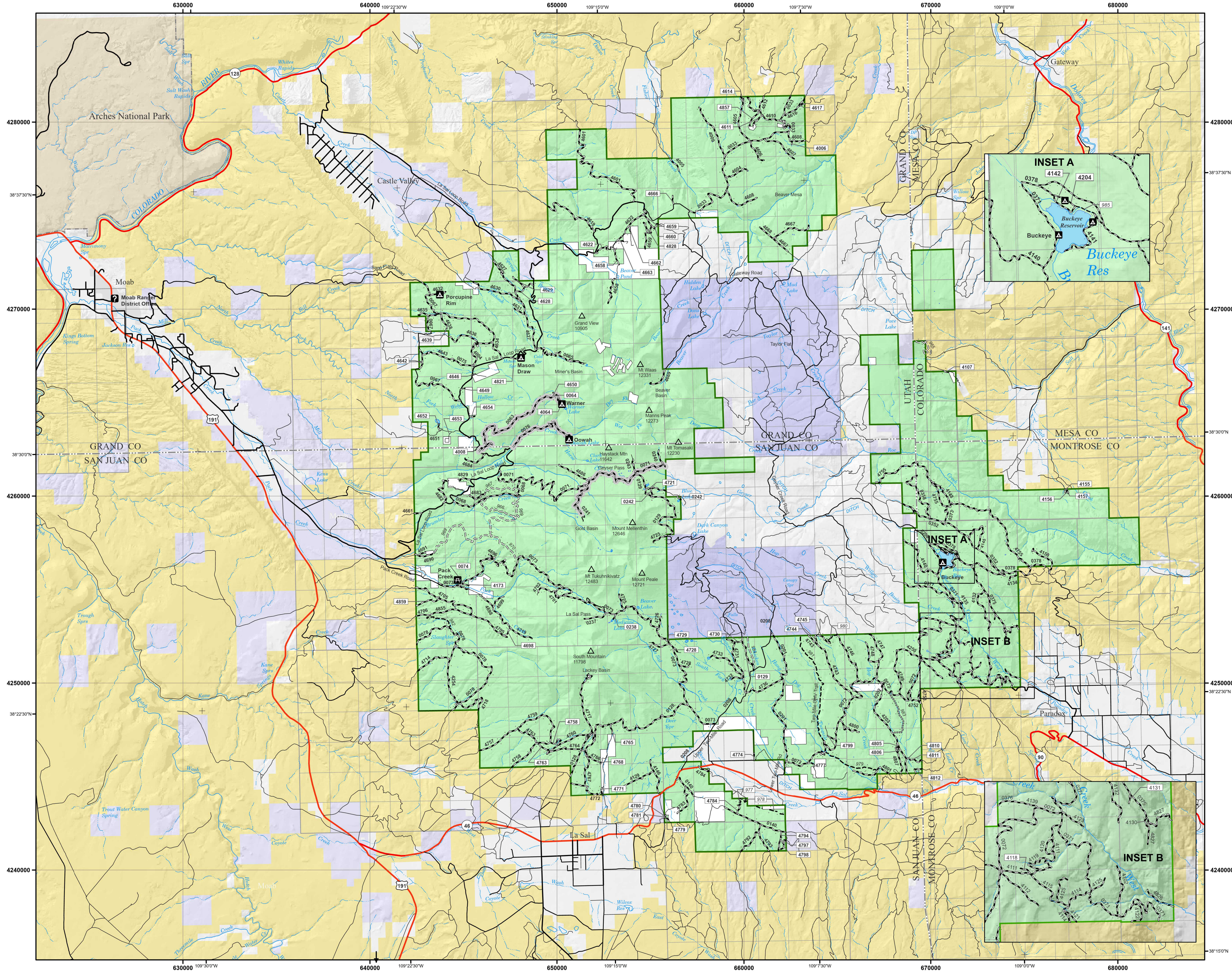


Travel Responsibly on land by staying on designated roads, trails and areas. Go over, not around, obstacles to avoid widening the trails. Cross streams only at designated fords. When possible, avoid wet, muddy trails. On water, stay on designated waterways and launch your watercraft in designated areas.

Respect the Rights of Others including private property owners, all recreational trail users, campers and others so they can enjoy their recreational activities undisturbed. Leave gates as you found them. Yield right of way to those passing you or going uphill. On water, respect anglers, swimmers, skiers, boaters, divers and those on or near shore.

Educate Yourself prior to your trip by obtaining travel maps and regulations from public agencies. Plan for your trip, take recreation skills classes and know how to operate your equipment safely. Avoid Sensitive Areas on land such as meadows, lakeshores, wetlands and streams. Stay on designated routes. This protects wildlife habitats and sensitive soils from damage. Don't disturb historical, archeological or paleontological sites. On water, avoid operating your watercraft in shallow waters or near shorelines at high speeds.

Do Your Part by modeling appropriate behavior, leaving the area better than you found it, properly disposing of waste, minimizing the use of fire, avoiding the spread of invasive species and repairing degraded areas.



**Moab Ranger District**

**Routes Too Short to Be Seen Clearly on the Map**

Route Number	Legend
5977, 5978, 5980, 5985	Trails Open to Vehicles 50" or Less in Width, Yearlong
50064, 50074, 50129, 50238, 50242, 54006, 54008, 54064, 54107, 54118, 54131, 54142, 54155, 54156, 54157, 54173, 54204, 54511, 54614, 54617, 54622, 54628, 54629, 54639, 54642, 54646, 54649, 54650, 54652, 54653, 54654, 54658, 54659, 54660, 54662, 54663, 54666, 54698, 54721, 54728, 54729, 54730, 54744, 54745, 54758, 54763, 54765, 54768, 54771, 54774, 54779, 54780, 54781, 54784, 54787, 54794, 54797, 54798, 54780, 54781, 54784, 54797, 54798, 54799, 54805, 54806, 54810, 54811, 54812, 54821, 54828, 54857, 54859	Roads Open to All Vehicles, Yearlong

**Seasonal and Special Vehicle Designations**

Route Number	Legend	Special Vehicle Designation	Dates Allowed
5983	Special Vehicle Designation	Trails open to vehicles 60" or less in width with 4 or more low pressure tires	Year-round
50071, 50241	Roads open to all Vehicles, with Seasonal Designation	Seasonal Designation	05/21 - 12/14
50063, 50076	Roads open to all Vehicles, with Seasonal Designation	Seasonal Designation	05/16 - 09/30



North American Datum of 1983 (NAD 83)  
Universal Transverse Mercator, Zone 12N