

**Legend**

- Roads Open to Highway Legal Vehicles
- Roads Open to All Vehicles
- Trails Open to All Vehicles (See Table)
- Seasonal Designation (See Table)
- Interstate
- Highways, U.S., State
- Other Public Roads
- FS Campground
- Picnic Area
- Peaks
- Forest or Unit Boundary
- National Forest System Lands
- Non-National Forest System Lands within the National Forest
- Township and Range Lines
- Section Lines

**EXPLANATION OF LEGEND ITEMS**

Roads Open to Highway Legal Vehicles Only:  
These roads are open only to motor vehicles licensed under State law for general operation on all public roads within the state.

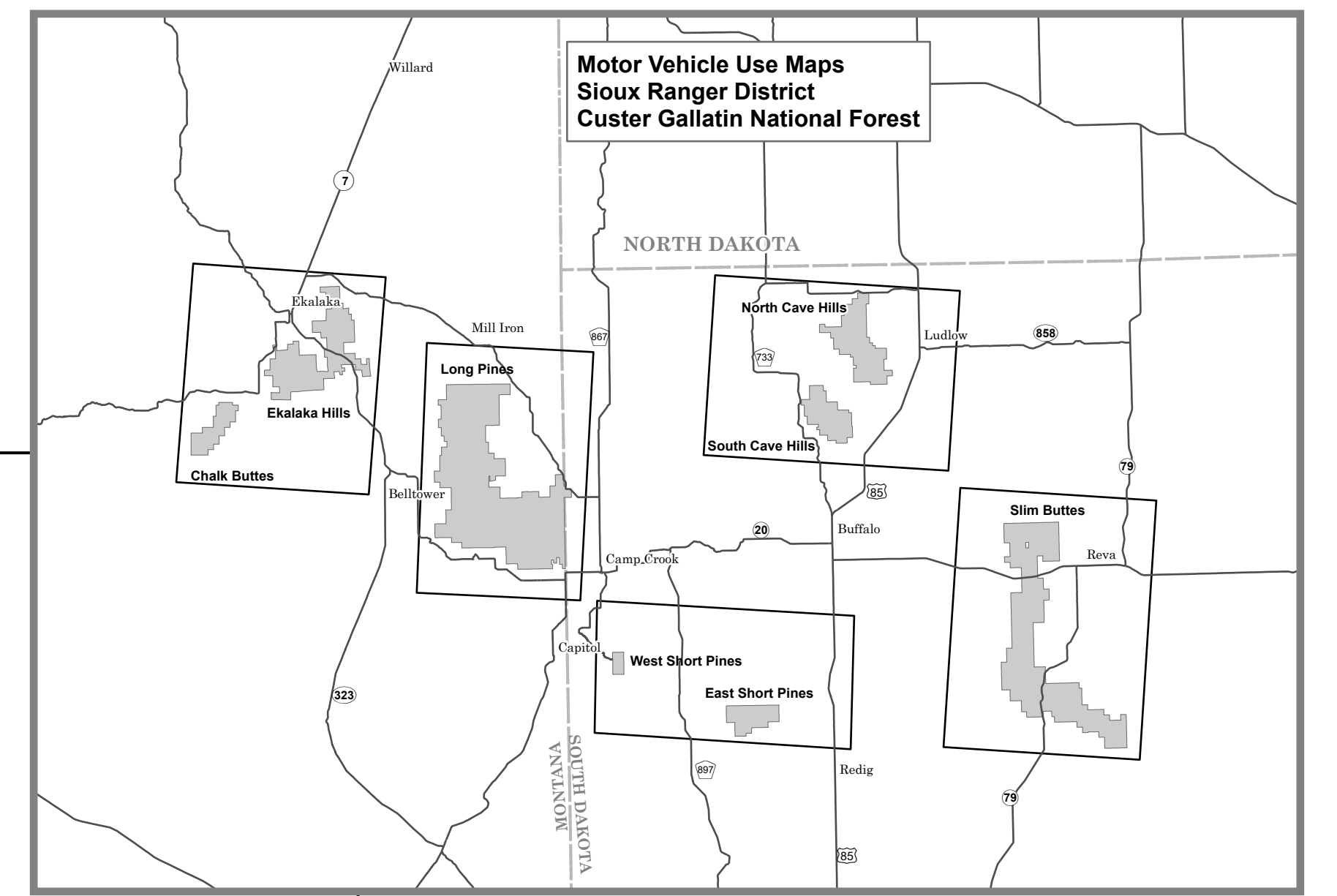
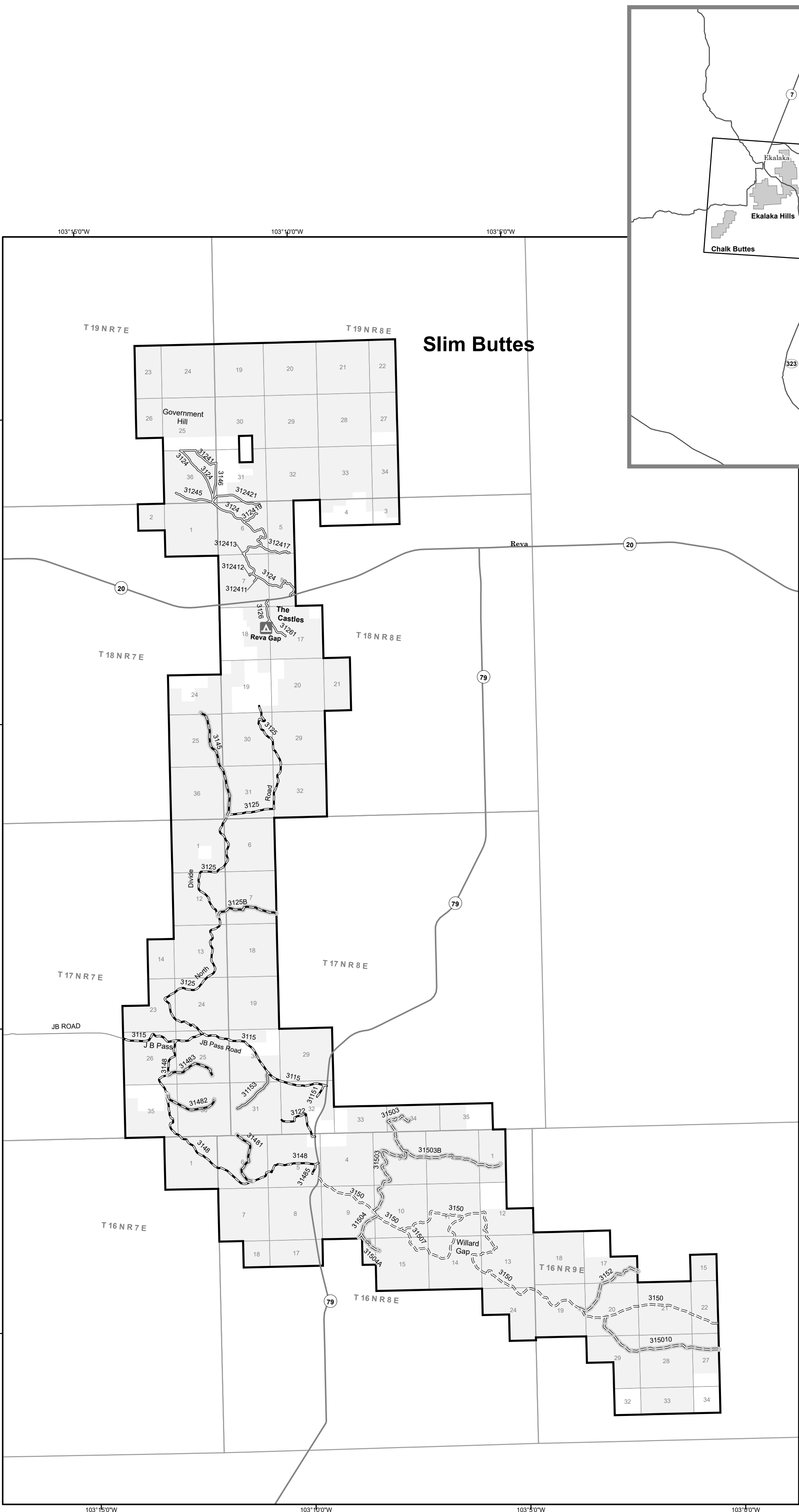
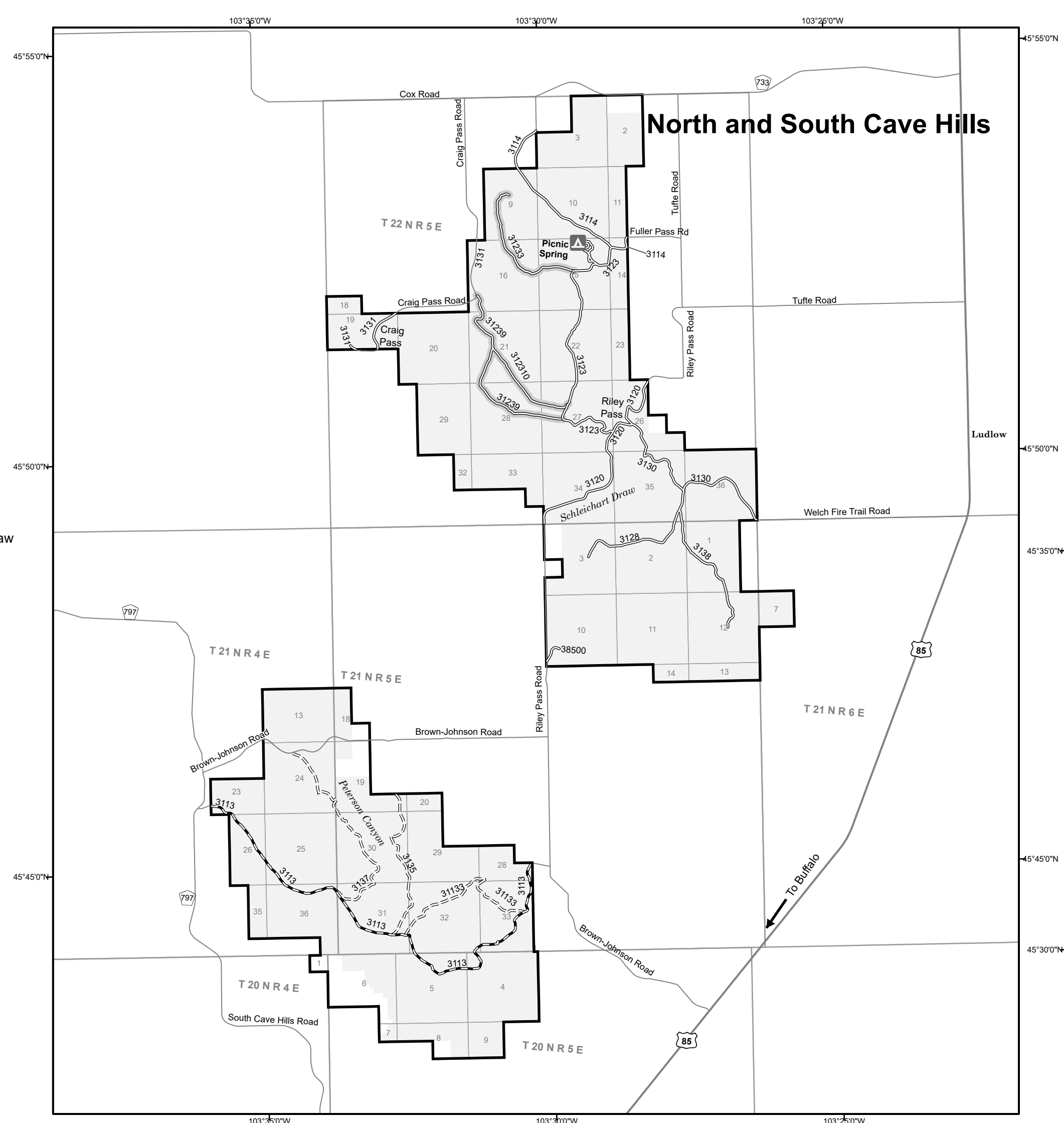
Roads Open to All Vehicles:  
These roads are open to all motor vehicles, including smaller off-highway vehicles that may not be licensed for highway use (but not to oversized or overweight vehicles under State traffic law).

Trails Open to All Vehicles:  
Trails open to all motor vehicles, including both highway legal and nonhighway legal vehicles.

Seasonal Designation:  
This symbol, used in conjunction with one of the other road or trail symbols, indicates that the road or trail is open only during certain portions of the year. Refer to Seasonal and Special Designation Table for further instructions.

Other Public Roads and Trails:  
Interstate  
Highways, U.S., State  
Other Public Roads

These symbols are used to show routes the Forest Service does not have jurisdiction over and has not designated for motorized use. These symbols are part of the reference layers showing connections to towns and cities outside the forest boundary.



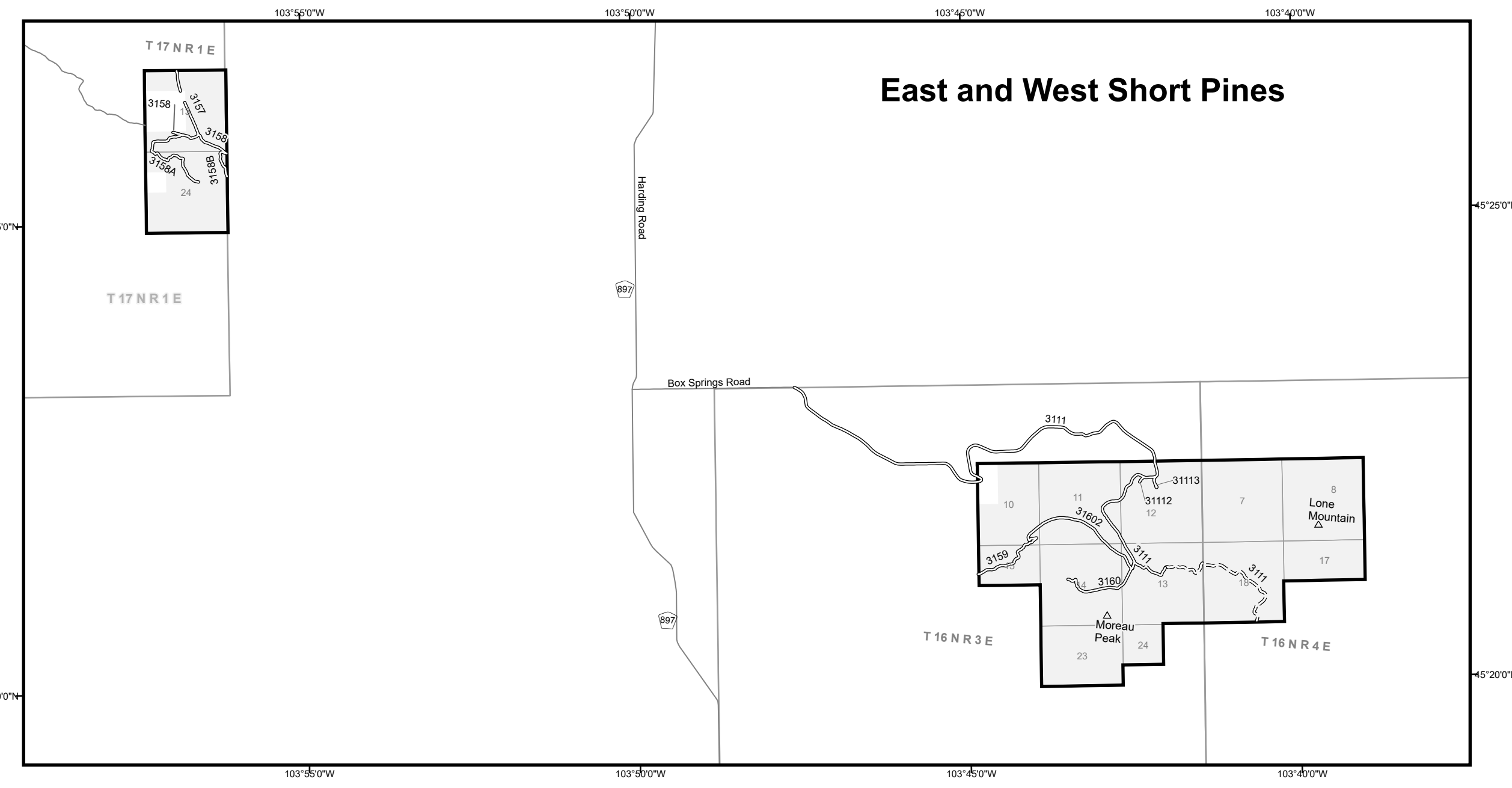
**Special Vehicle Designation Definitions:**

Off-Highway Vehicles(OHV's): - Any motor vehicle designed for or capable of cross-country travel, including but not limited to Pickups, ATV's, and Motorcycles.

Dispersed Vehicle Camping - South Dakota		
Route Number	Distance	Vehicle Type and Dates Allowed
All designated routes within the Slim Buttes, North and South Cave Hills, and East and West Short Pines Land Units	300 feet from centerline of route both sides on National Forest Lands	Same as permitted on road or trail

Seasonal and Special Vehicle Designations East and West Short Pines, North and South Cave Hills, Slim Buttes, South Dakota				
Route Number	Legend	Dates Allowed	Beginning Mile Post	Ending Mile Post
3111	Trails Open to All Vehicles		10.31	12.25
31133, 3135, 3137, 3150, 31507	Trails Open to All Vehicles	Yearlong	-	-
31153, 31233, 31239, 312310	Roads Open to Highway Legal Vehicles Only, with Seasonal Designation		-	-
3125B, 3145, 31481, 31482, 31483	Roads Open to All Vehicles, with Seasonal Designation	12/01-10/14	-	-
31503, 31503B, 31504, 31504A, 3152, 315010	Trails Open to All Vehicles, with Seasonal Designation		-	-

Recreation Sites Slim Buttes, North Cave Hills, South Dakota		
Site Name	Dates Allowed	Vehicle Type Allowed
Reva Gap Campground	Yearlong	Roads Open to Highway Legal Vehicles Only
Picnic Springs Campground		



North American Datum of 1983 (NAD 83)  
Albers Equal Area