



CENTRAL FEDERAL LANDS (FHWA) &
SANTA FE NATIONAL FOREST (USFS)



GALLINAS CANYON ROAD RESTORATION



Agenda

WHO'S WHO

SCOPE OF OUR WORK

AREA OF OUR STUDY

KEY GOALS & CONSIDERATIONS

PROPOSED ROADWAY ALIGNMENT

OPEN DISCUSSION



Welcome to Zoom!

- ZOOM POLLING WILL OCCUR THROUGHOUT - ANSWERS ARE ANONYMOUS
- CHAT BOX SHOULD BE USED FOR QUESTIONS
- *ALL CONVERSATION IS VALUED!* IF WE DON'T HAVE AN ANSWER NOW, WE'LL FOLLOW UP
- WE WILL WELCOME ANY ADDITIONAL QUESTIONS, FEEDBACK, OR THOUGHTS THAT MAY ARISE FOR YOU IN THE WEEKS TO COME

What we've been doing & what we're achieving today

- USFS HAS BEEN MAKING PROGRESS ON RECOVERY
 - HAZARD TREE MITIGATION
 - ROAD REPAIR
 - EMERGENCY PREPAREDNESS
- GALLINAS CANYON IS IMPORTANT – YOUR FEEDBACK IS VERY VALUABLE



Who's Who?



Who's guiding the technical study? *Your Panelists*

Central Federal Lands Highway Division

- Tammy Eggers, P.E., Project Manager

Santa Fe National Forest

- Amina Sena, District Ranger
- Lawrence Lujan, Deputy District Ranger
- Claudia Brookshire, Public Affairs Officer

DJ&A

- Mark Meng, P.E., PMP, Project Manager
- Brendan McCray, P.E., Transportation Engineer
- Gibson Hartwell, Environmental Planner

Bohannon Huston, Inc.

- Denise Aten, ACIP, Planner
- Ciaran Lithgow, AICP, Planner
- Alandren Etlantus, P.E., Engineer
- Autumn Falstad, Planner

Federal Leaders



Consultant Team



Bohannon  Huston

Who's all invited today?

Private Stakeholders

Allotment Permittees
Calf Canyon Property Owners
Land Grant Members
Rec Permittees
Outfitter & Guide Permittees

Nonprofit Organizations

Bat Conservation International
Conservation Legacy
Forest Stewards Guild
Hermit's Peak Watershed Alliance
Las Vegas New Mexico Community Foundation
Las Vegas San Miguel Chamber of Commerce
National Forest Foundation
National Park Service
Neighbors Helping Neighbors
New Mexico Forest and Watershed Restoration Institute
New Mexico Volunteers for the Outdoors
New Mexico Wild
The Nature Conservancy
New Mexico Acequia Association

Public & Government Agencies

Bureau of Land Management
Bureau of Reclamation
City of Las Vegas
Congressional Delegation
Department of Energy
Lincoln County
Las Vegas Fire Department
Miguel County Sherrif's Office
Mora County
Mora-San Miguel Electric Cooperative
NM Land Grant Council
Ocate-Ojo Feliz Volunteer Fire Department
Pecos Canyon Fire & Rescue
Pecos Canyon State Park
Pecos National Historic Park
San Miguel County
San Miguel County Fire Department
Santa Fe National Forest
State of NM - State Parks
State of NM - EMNRD
State of NM - Outdoor Recreation Division
State of NM - Tourism Department

Public & Government Agencies (Continued)

State of NM - Department of Game & Fish
State of NM - Department of Transportation
State of NM - Department of Agriculture
State of NM - Forestry Division
Tierra y Montes Soil and Water Conservation District
US Army Corps of Engineers
US Department of Homeland Security (FEMA)
USDA - Natural Resources Conservation Service
USDA Fish and Wildlife Service
USDA Forest Service
USDOI - Geological Survey
Western Mora Soil and Water Conservation District

**Let us know in
the chat if anyone
is missing!**



Zoom Poll #1: What does Gallinas Canyon mean to you?


- Give your answer **in 1 - 3 words** in the Zoom Poll!





Our Scope of Work

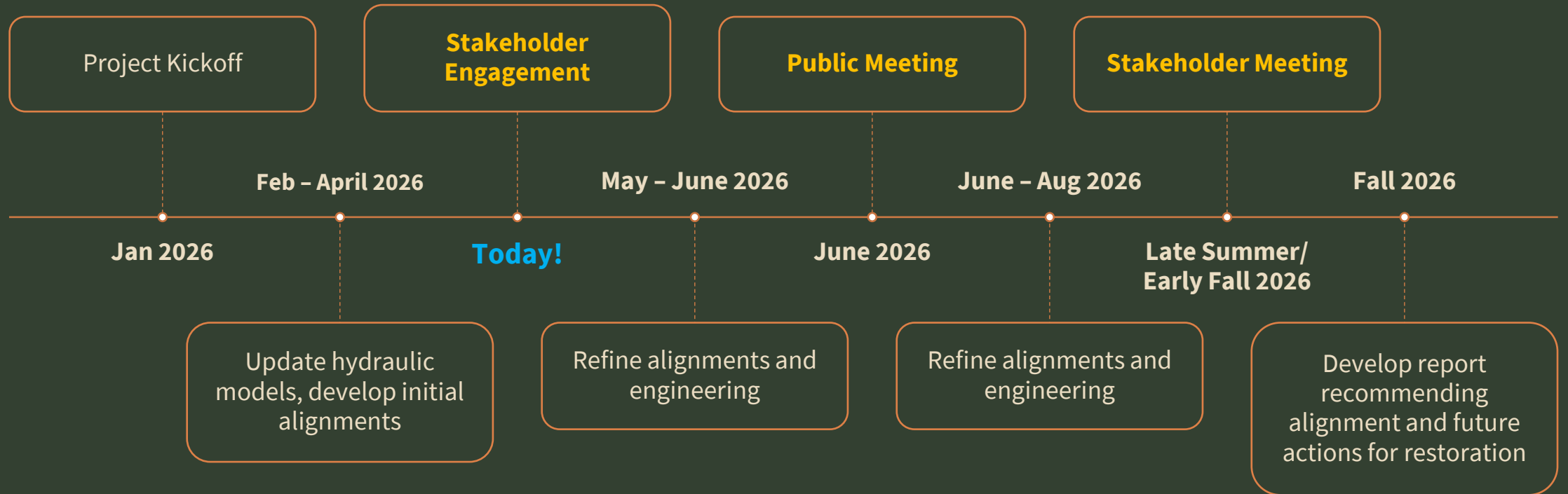
Study potential alignments for Gallinas Canyon Road, considering damage from post-fire flooding and revised floodplain boundaries

- 
- Update hydraulic models for post-fire rain flows (considering forest regrowth and new stream patterns)
 - Facilitate stakeholder and public shared visioning and input
 - Develop potential alternatives

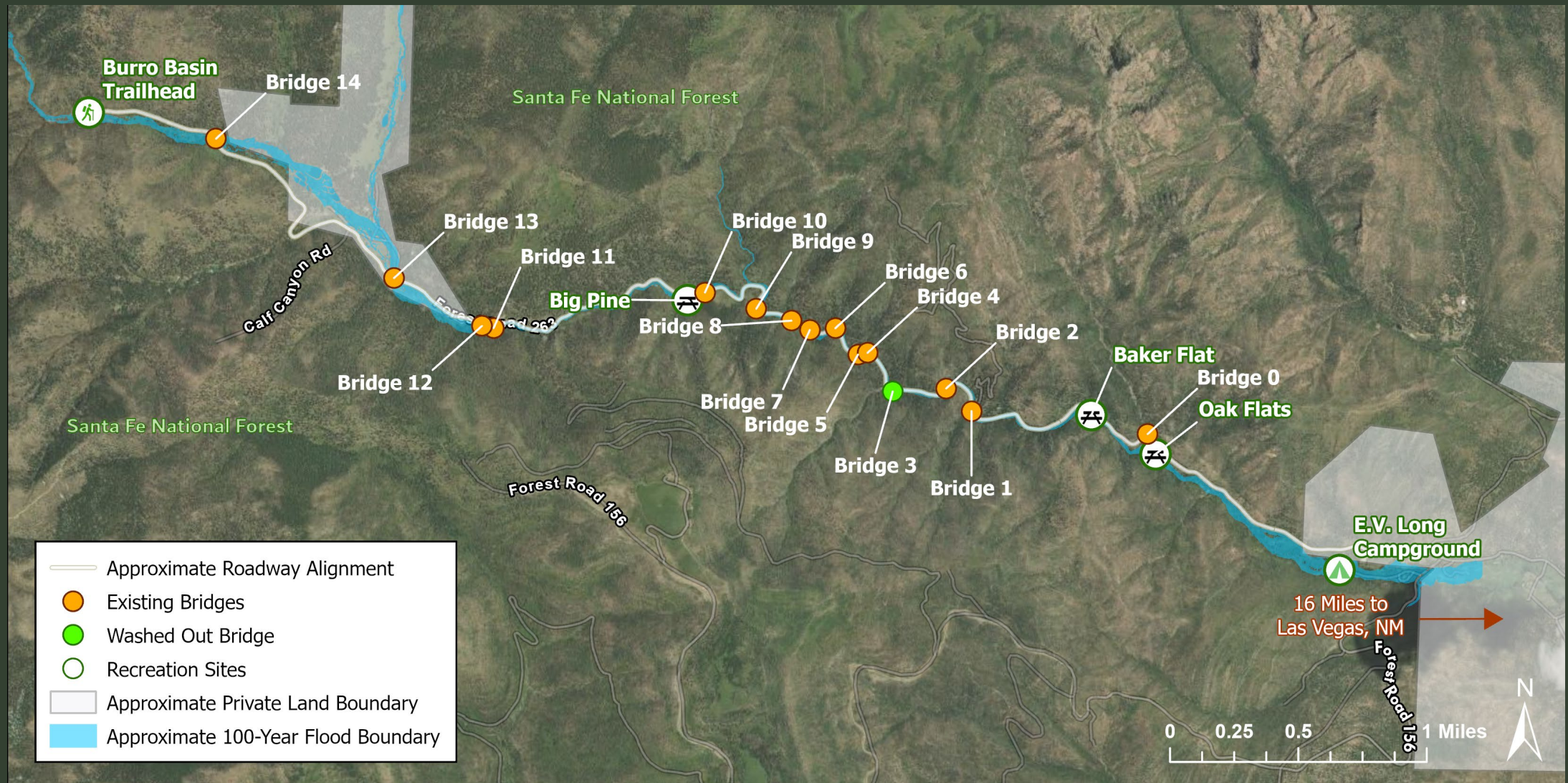
Recommend an alignment and future actions toward access restoration

This is just the beginning!

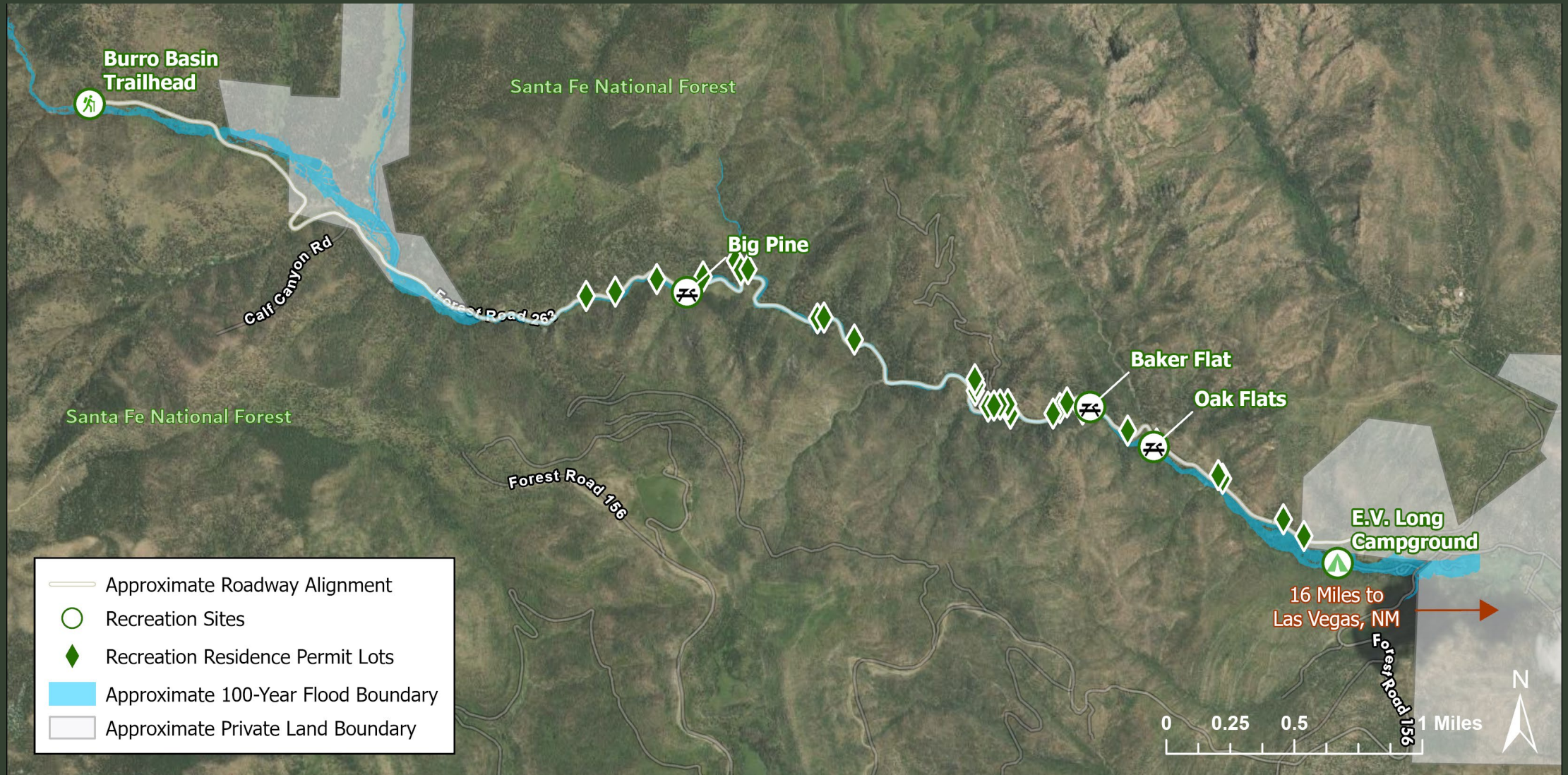
Study Timeline



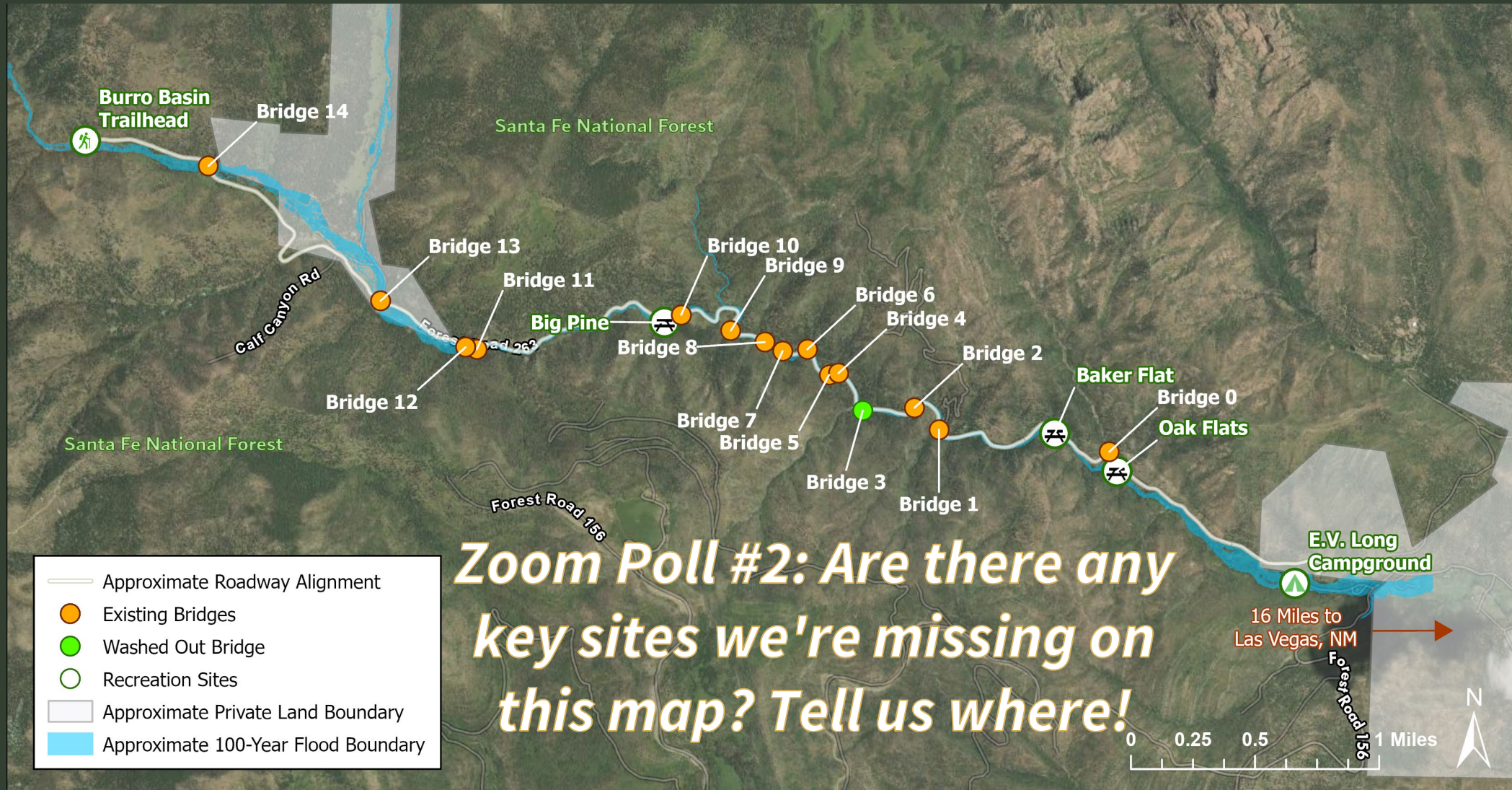
Area of Study: Bridges and Recreation Access



Area of Study: Recreation Residence Permits & Private Property



Area of Study: Anything missing?



Key Goals & Considerations So Far

Restore safe access to recreation, private property, and grazing assets in Gallinas Canyon

- Elevate roadway above new 100-year floodplain to avoid additional future damage
- Decrease the number of river crossings where possible
- Minimize disruption to private property and acequias
- Protect river health and water quality
- Honor cultural heritage

Key Goals & Considerations – Zoom Polls #3 & 4!

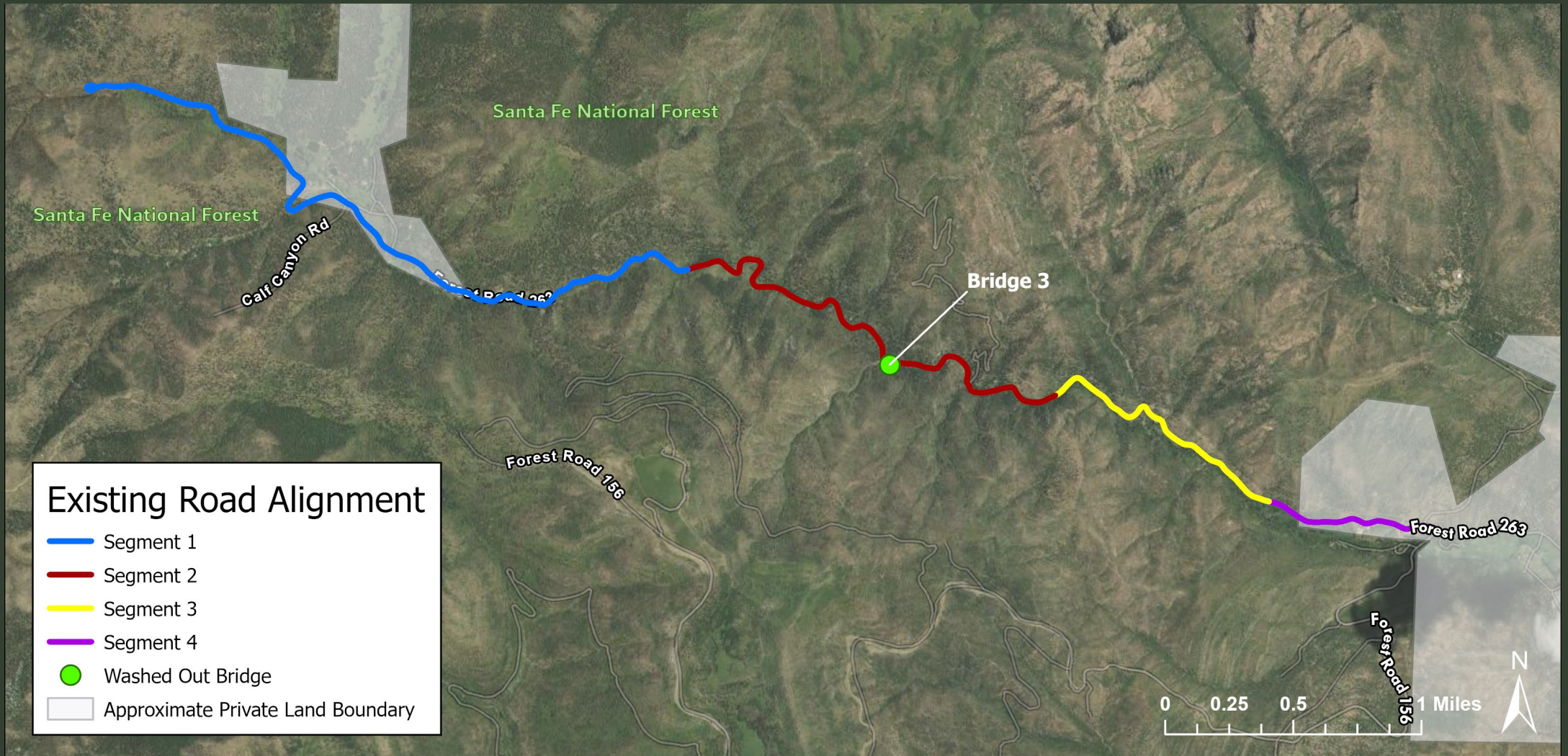
**3. Which of the following is most important to you as we plan the road restoration?
(Pick up to 3!)**

4. Is there a goal or consideration you feel is missing from this list?

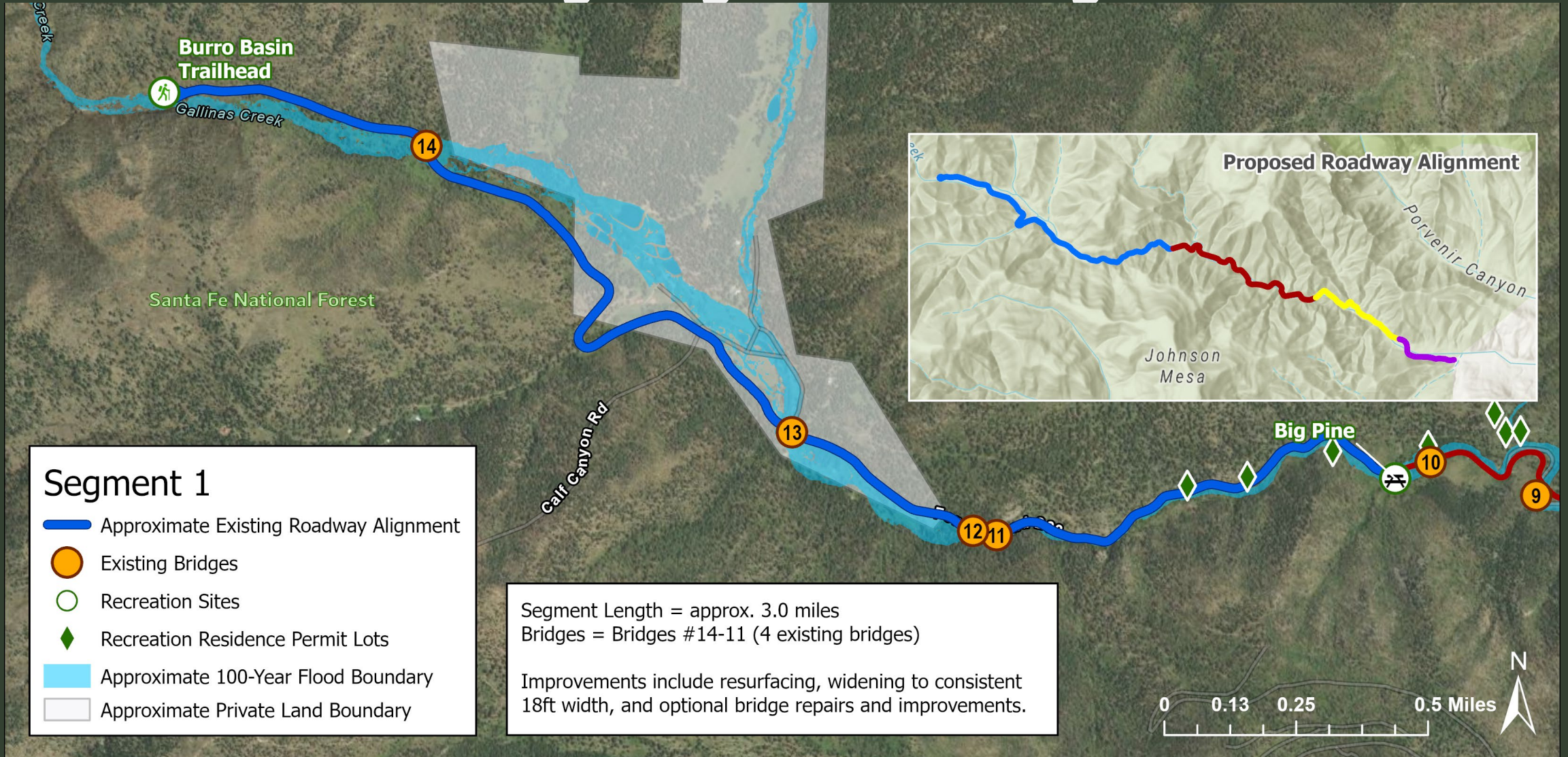
Restore safe access to recreation, private property, and grazing assets in Gallinas Canyon

- Elevate roadway above new 100-year floodplain to avoid additional future damage
- Decrease the number of river crossings where possible
- Minimize disruption to private property and acequias
- Protect river health and water quality
- Honor cultural heritage

Existing Corridor by Segment

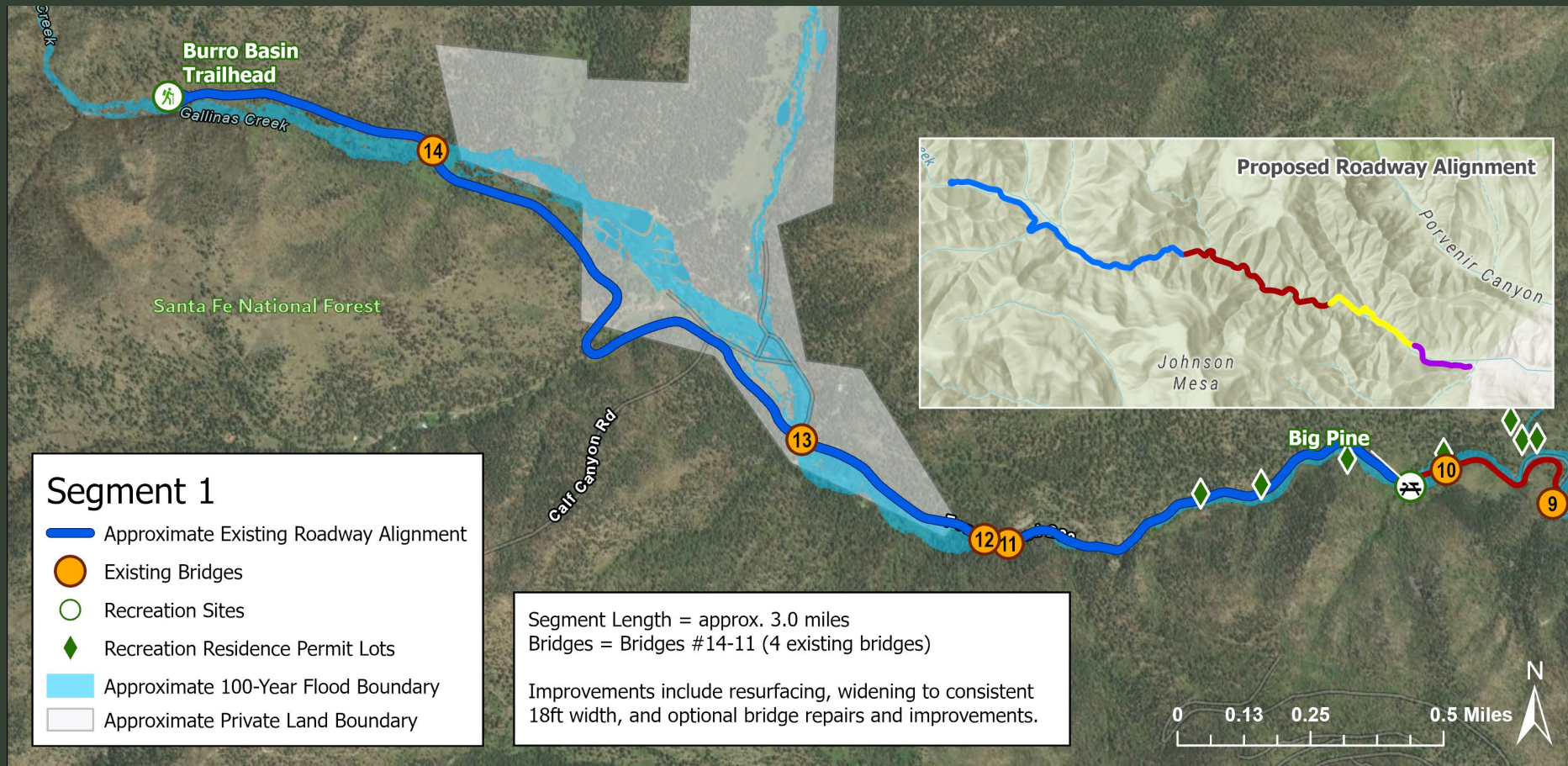


Maintain Existing Alignment - Segment 1

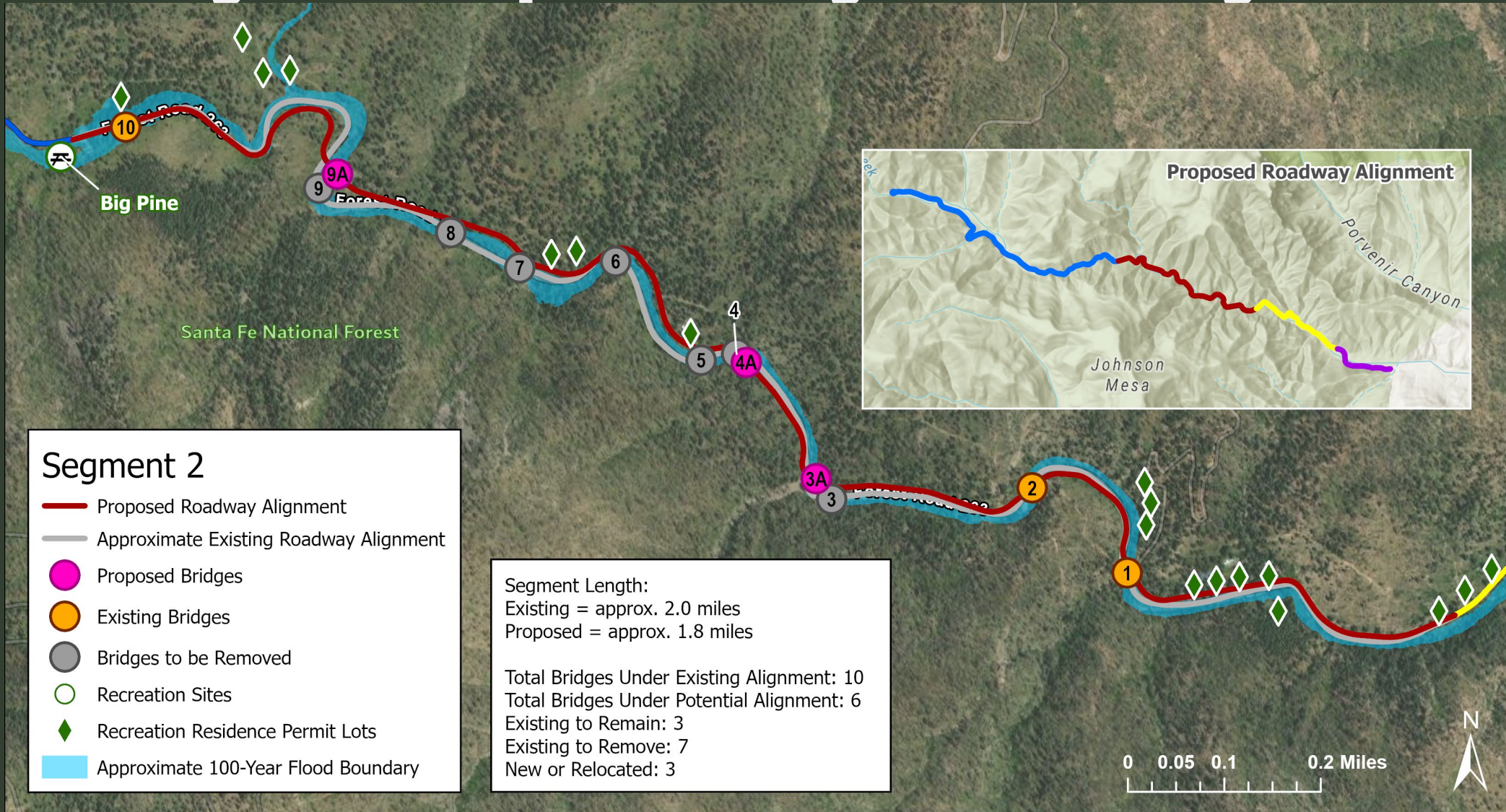


Existing Alignment - Segment 1 - Poll Time! (#5)

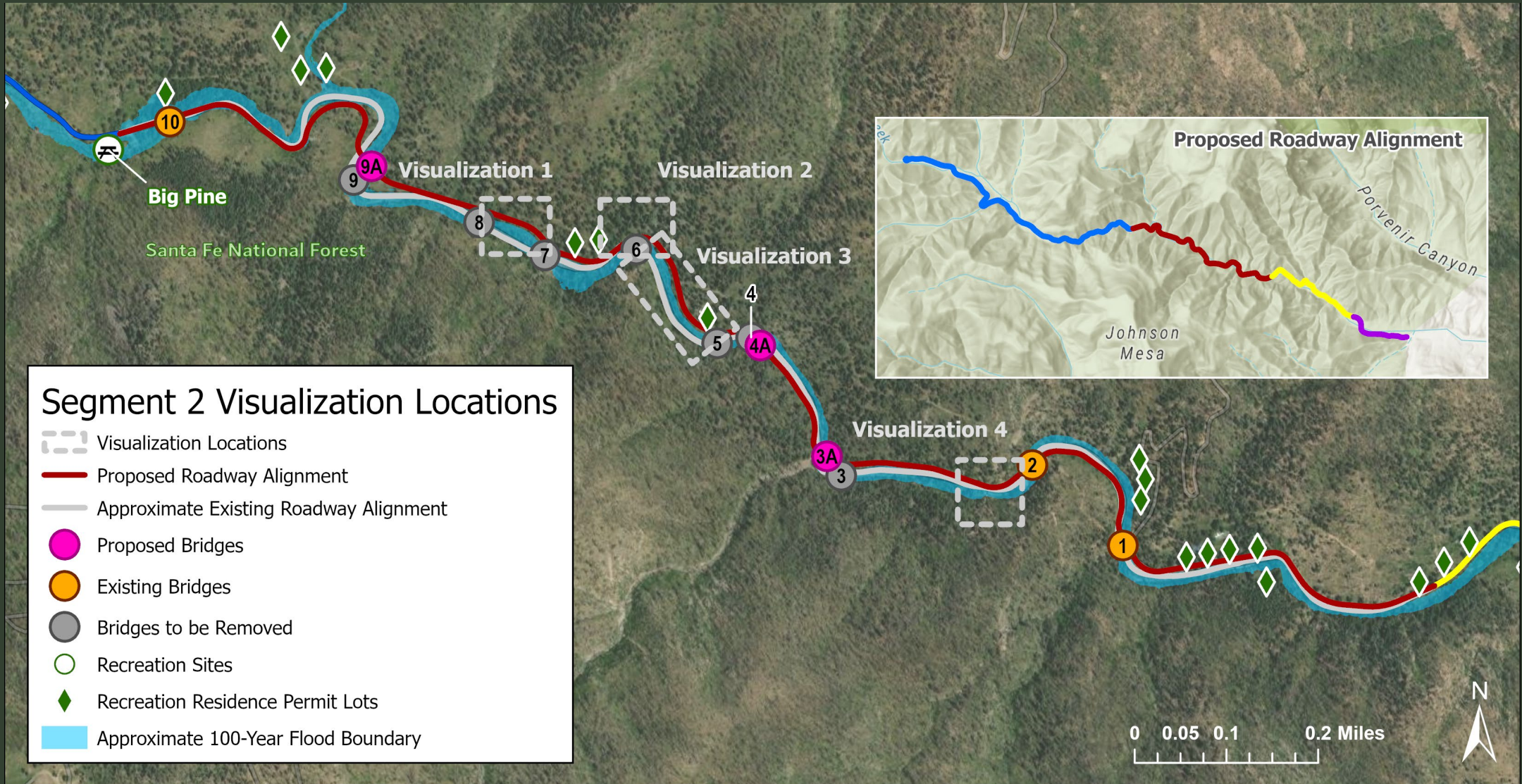
Zoom Poll: For Segment 1, how do you feel about maintaining the existing alignment (supportive, concerned, no opinion)? Tell us why (optional).



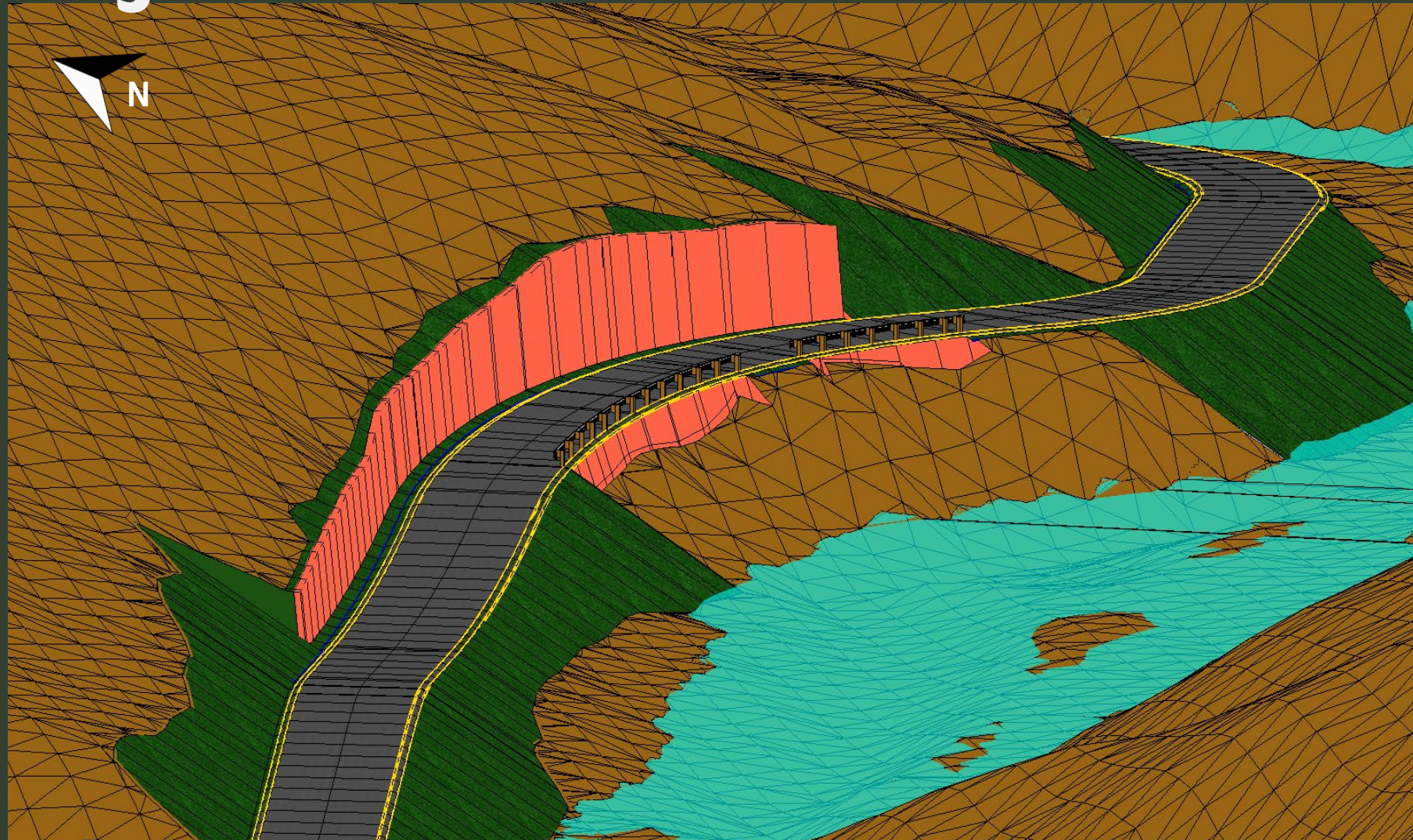
Existing and Proposed Alignment - Segment 2



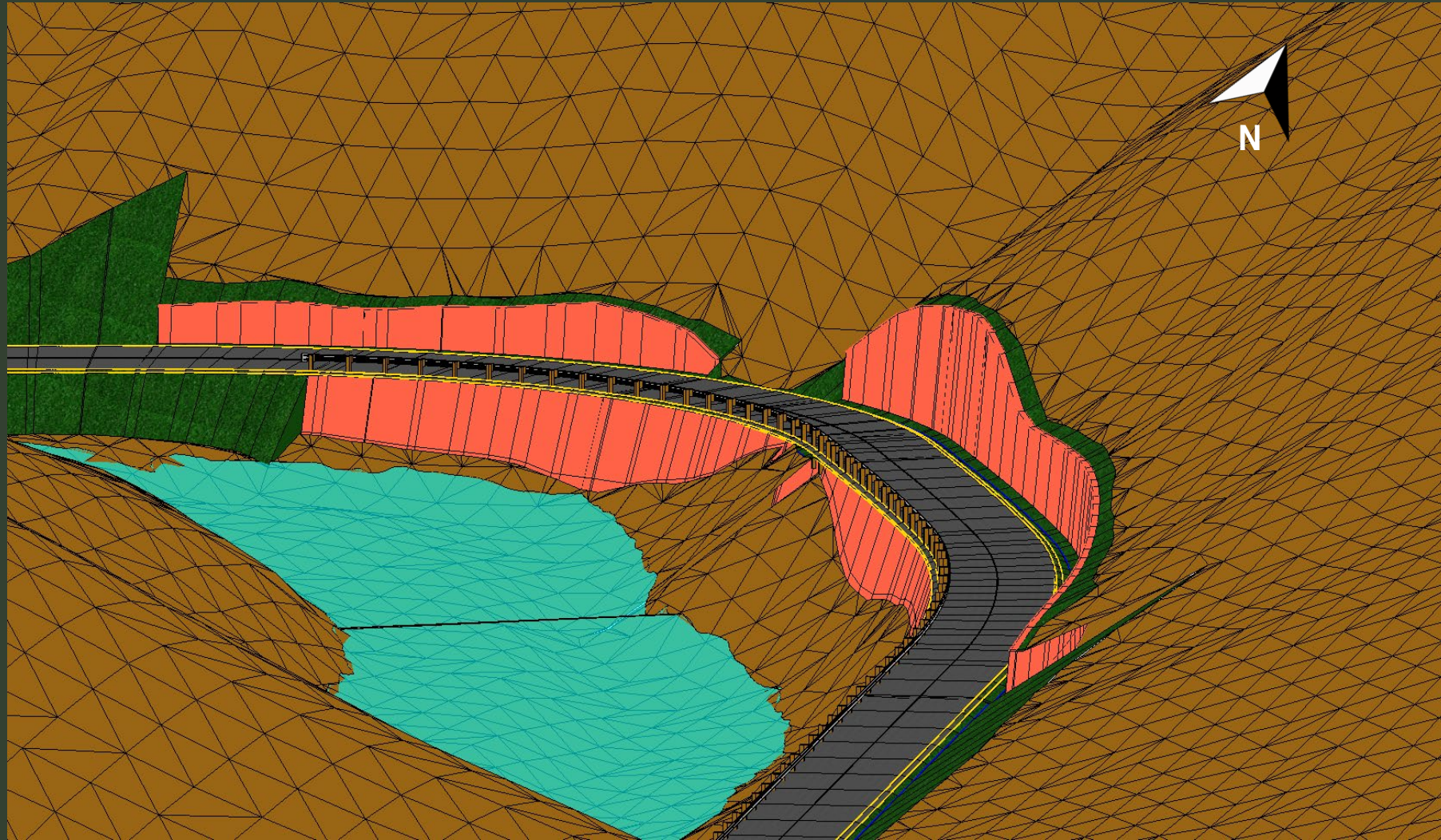
Segment 2 - Visualization Key Map



Segment 2 - Visualization 1

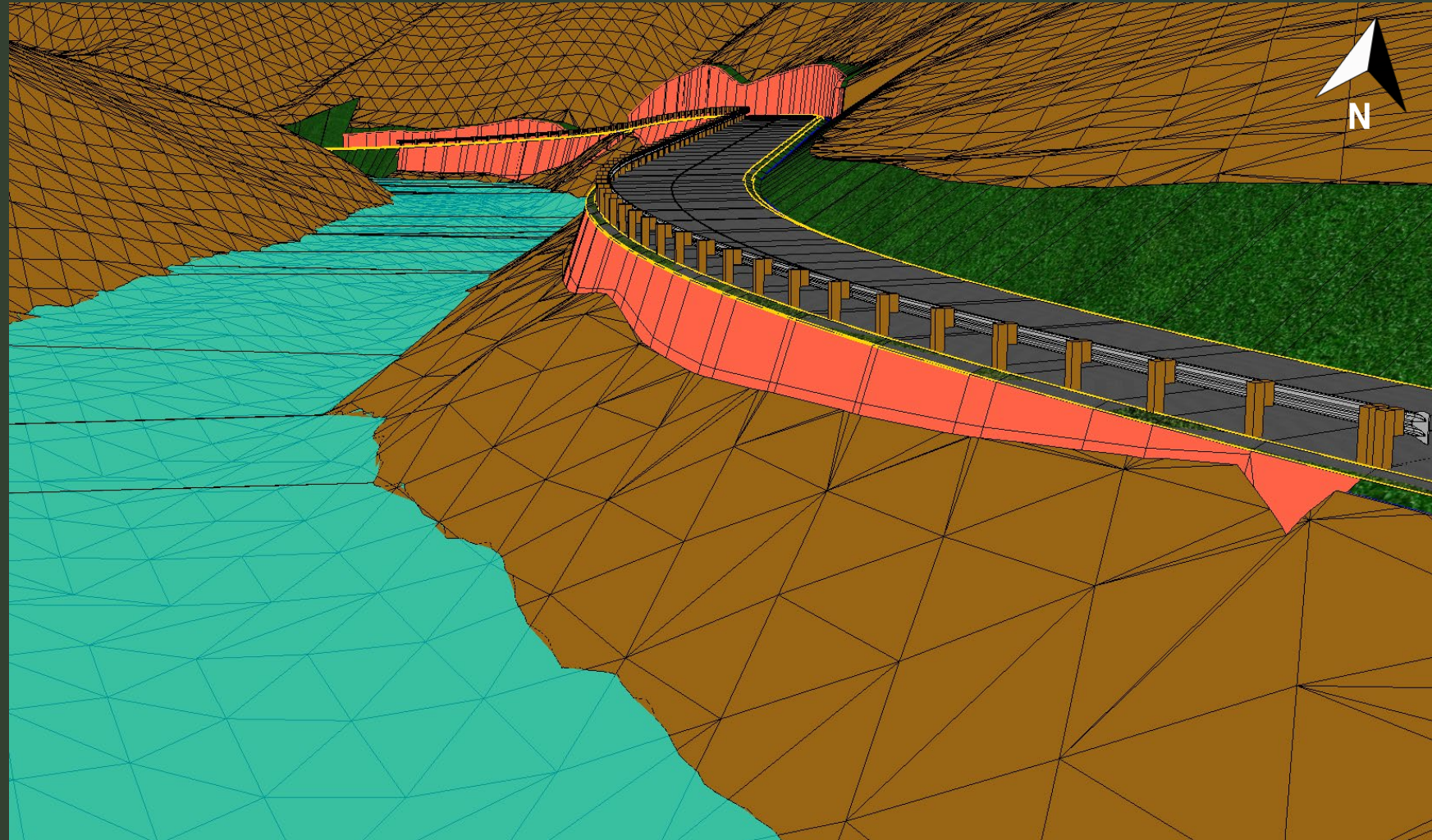


Segment 2 - Visualization 2

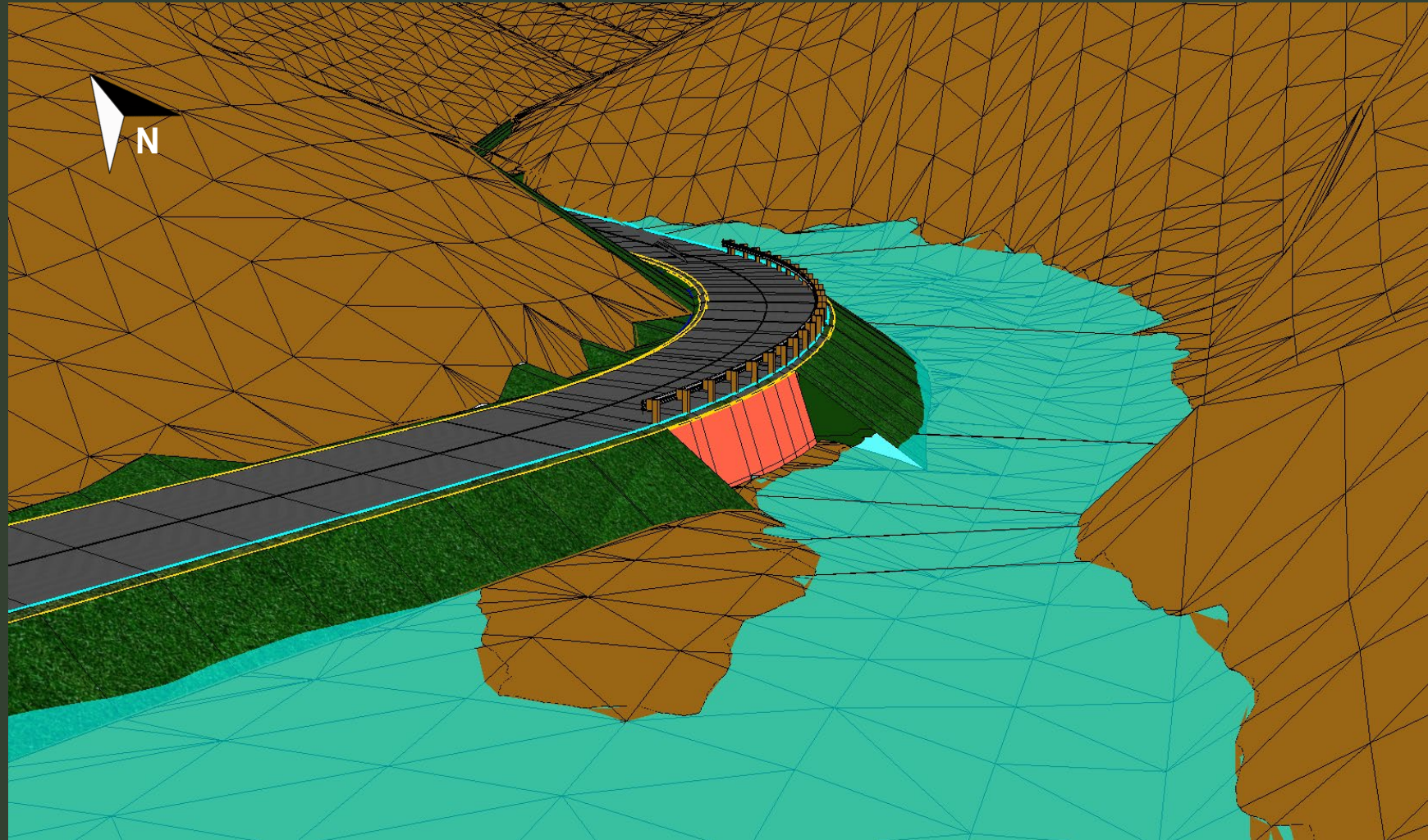


	Wall
	Cut and Fill
	Floodplain (10 yr)
	Existing Terrain

Segment 2 - Visualization 3

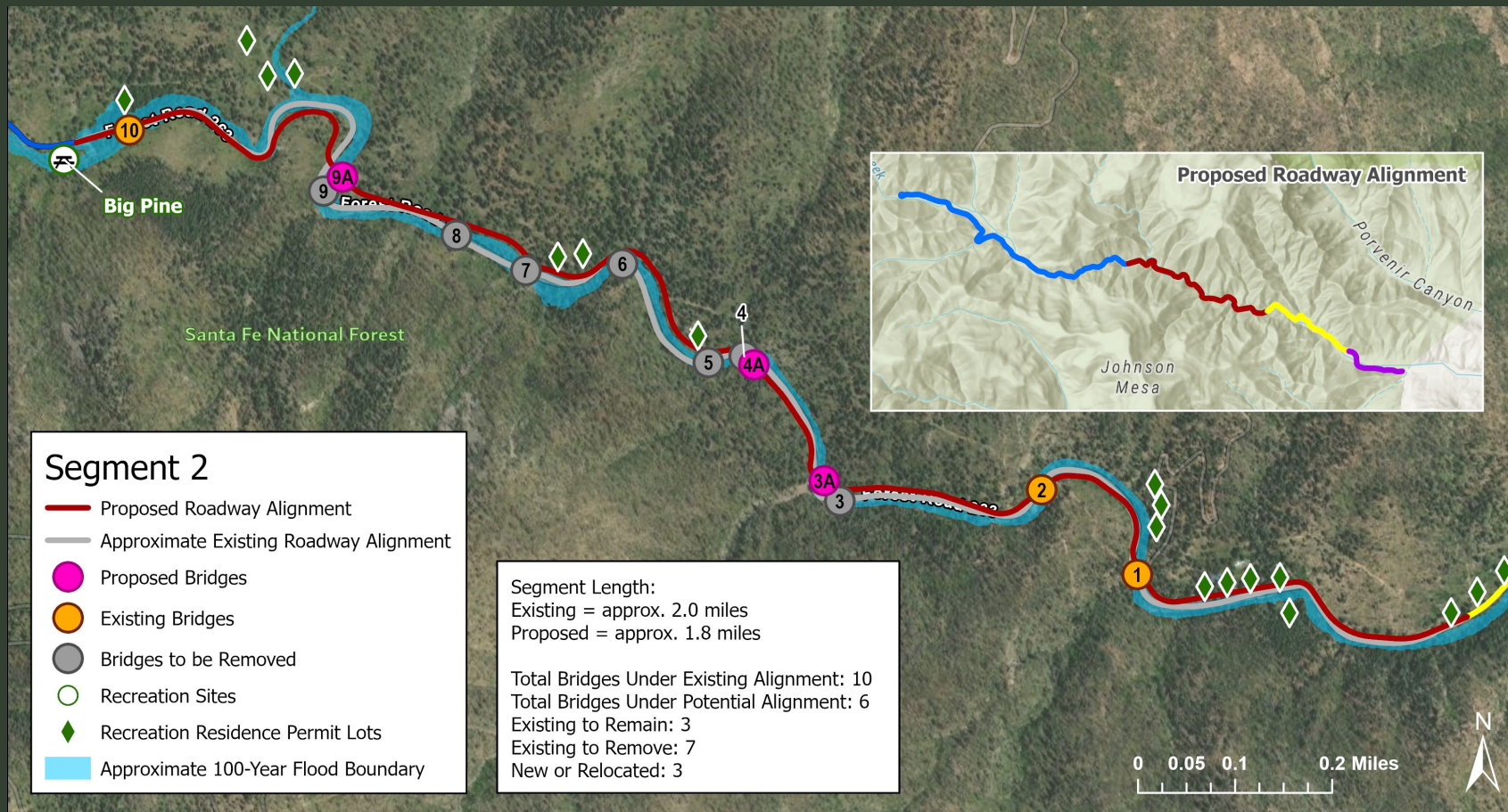


Segment 2 - Visualization 4



Proposed Alignment - Segment 2 - Poll Time (#6)!

Zoom Poll: For Segment 2, how do you feel about the proposed alignment (supportive, concerned, no opinion)? Tell us why (optional).



Maintain Existing Alignment- Segment 3

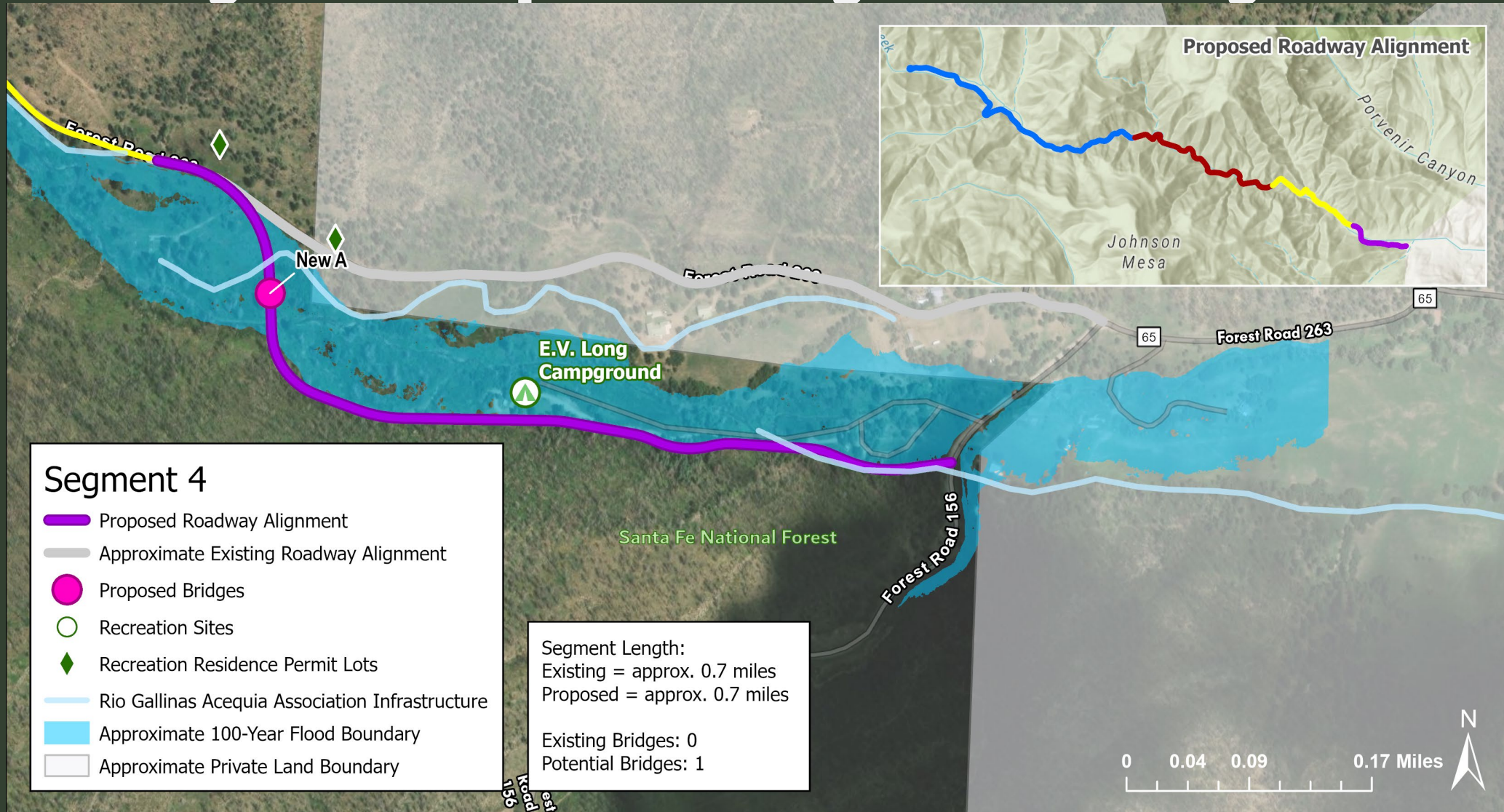


Existing Alignment - Segment 3 - Poll Time (#7)!

Zoom Poll: For Segment 4, how do you feel about maintaining the existing alignment (supportive, concerned, no opinion)? Tell us why (optional).

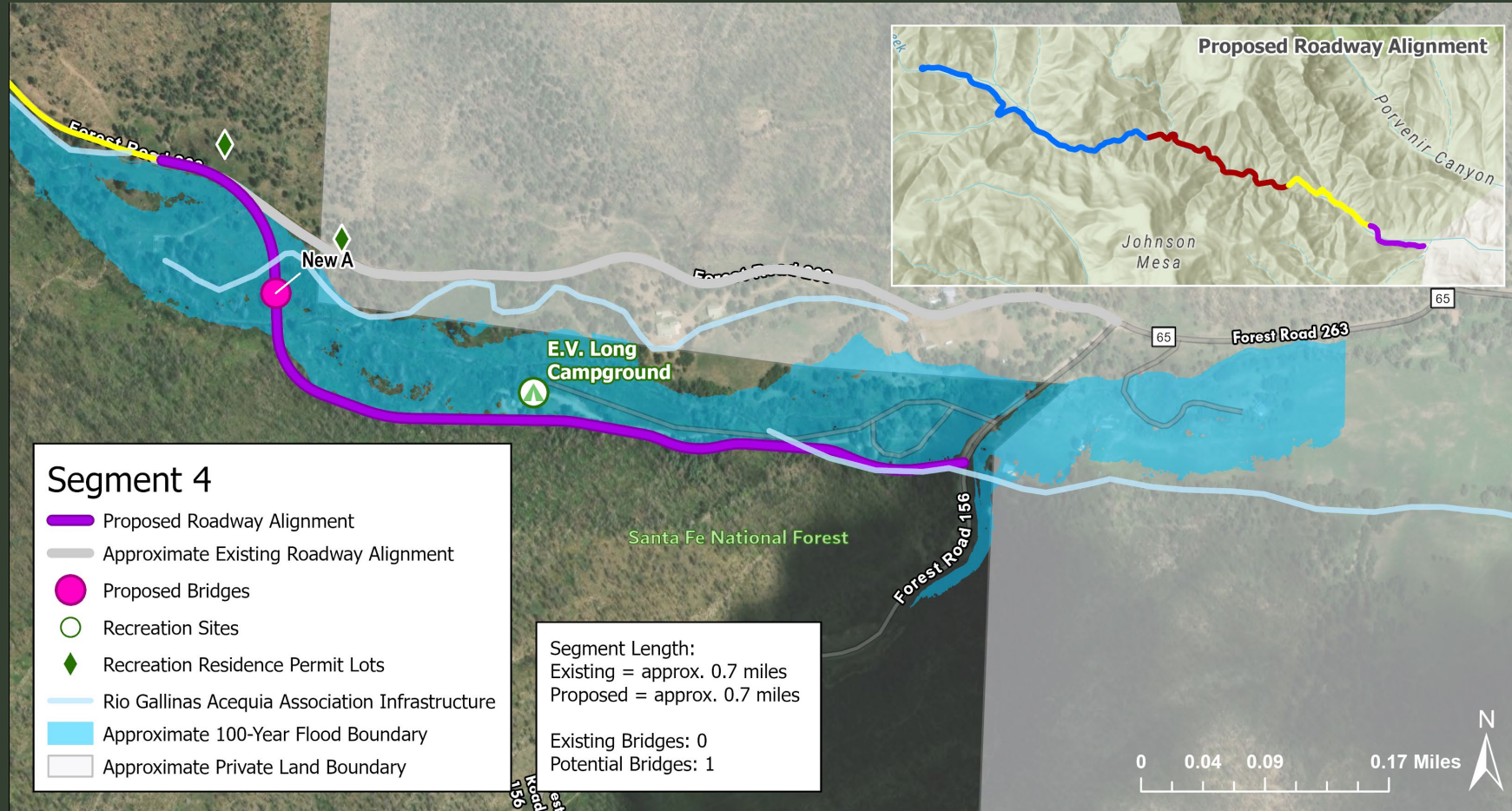


Existing and Proposed Alignment - Segment 4



Proposed Alignment – Segment 4 – Poll Time (#8)!

Zoom Poll: For Segment 4, how do you feel about the proposed alignment (supportive, concerned, no opinion)? Tell us why.



Pulsepoints (Zoom Polls #9 and #10!)

- ❖ How do you feel about the potential alignments you just saw? What gives you pause? What gives you hope?
- ❖ What's one thing you want the project team to remember as we move forward?



Discussion and Q&A

ANSWER QUESTIONS FROM THE CHAT
USE THE "RAISE HAND" FUNCTION IF YOU'D
LIKE TO COME OFF MUTE



What we've heard today

REFLECT ON PRIORITIES, CONCERNS, AND KEY
TAKEAWAYS



Thank you!

Please direct questions, thoughts, and comments to:

Claudia Brookshire, Public Affairs Officer
Santa Fe National Forest, Forest Service, USDA
Claudia.Brookshire@usda.gov | 505-438-5320

Next meetings on this topic:

In-Person Stakeholder Meeting | May 7th @ 6pm
Highlands University, Student Union Building #320

Public Open House | June 4, 2026 @ 5:30pm
Highlands University, Student Union Building #320

Follow Up Meeting with You in Fall 2026

For future events, visit:

<https://www.fs.usda.gov/r03/santafe/events>

