

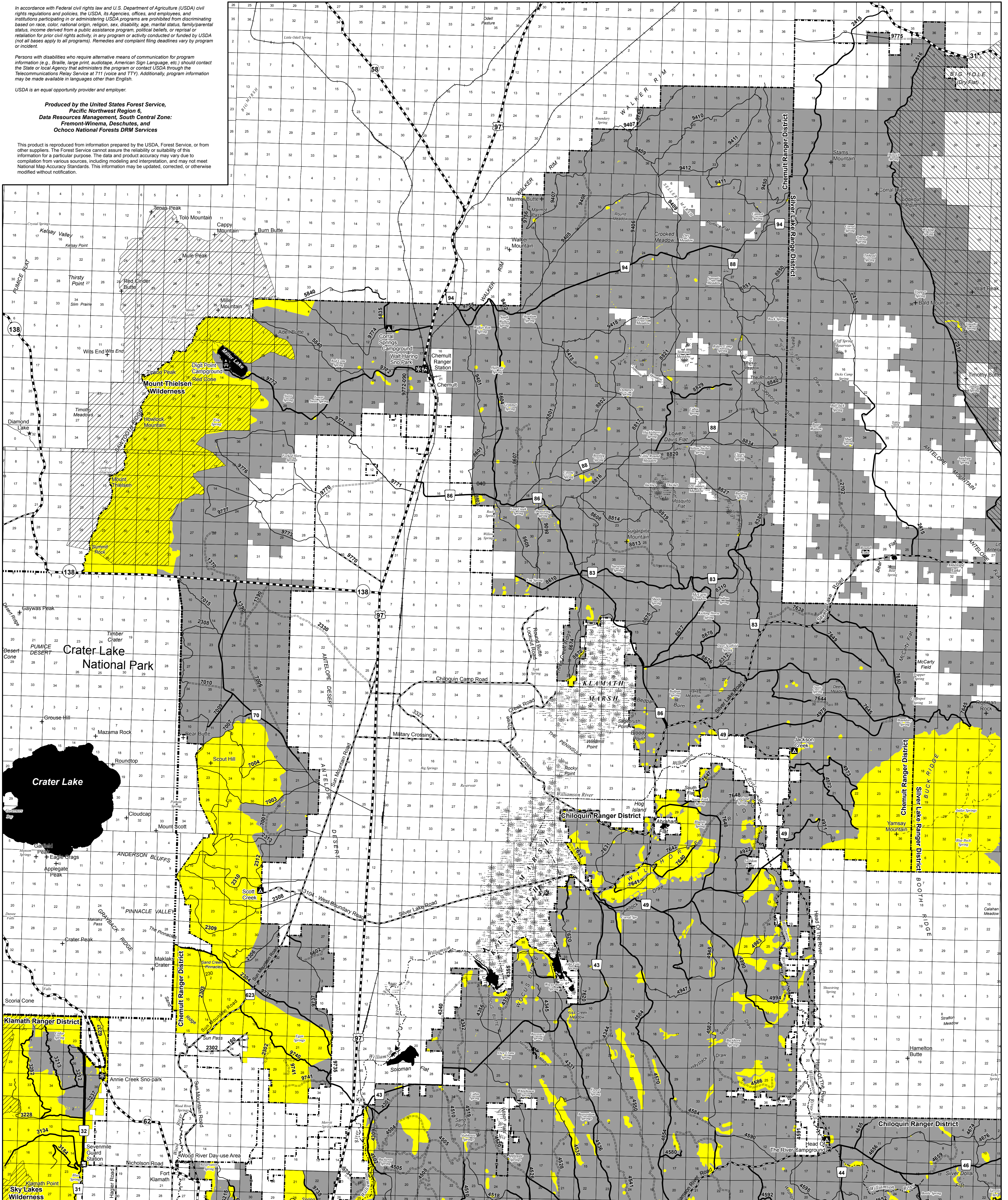
In accordance with Federal civil rights law and U.S. Department of Agriculture (USDA) civil rights regulations and policies, the USDA, its Agencies, offices, and employees, and institutions participating in or administering USDA programs are prohibited from discriminating based on race, color, national origin, religion, sex, disability age, marital status, family/parental status, income derived from a public assistance program, political beliefs, or reprisal or retaliation for prior civil rights activity, in any program or activity conducted or funded by USDA (not all bases apply to all programs). Remedies and complaint filing deadlines vary by program or incident.

Persons with disabilities who require alternative means of communication for program information (e.g., Braille, large print, audiotape, American Sign Language, etc.) should contact the State or local Agency that administers the program or contact USDA through the Telecommunications Relay Service at 711 (voice and TTY). Additionally, program information may be made available in languages other than English.

USDA is an equal opportunity provider and employer.

Produced by the United States Forest Service,
Pacific Northwest Region 6,
Data Resources Management, South Central Zone,
Fremont-Winema, Deschutes, and
Ococho National Forests DRM Services

This product is reproduced from information prepared by the USDA, Forest Service, or from other suppliers. The Forest Service cannot assure the reliability or suitability of this information for a particular purpose. The data and product accuracy may vary due to completion from various sources, including modeling and interpretation, and may not meet National Map Accuracy Standards. This information may be updated, corrected, or otherwise modified without notification.



Fremont-Winema National Forest Chemult and Chiloquin Ranger Districts Firewood / Product Plan Map

Produced by the Fremont-Winema National Forest, Last Updated Feb 23, 2026

Woodcutter must have in their possession; permit, synopsis of rules and regulations, Fremont-Winema National Forest Firewood map, and load tags.

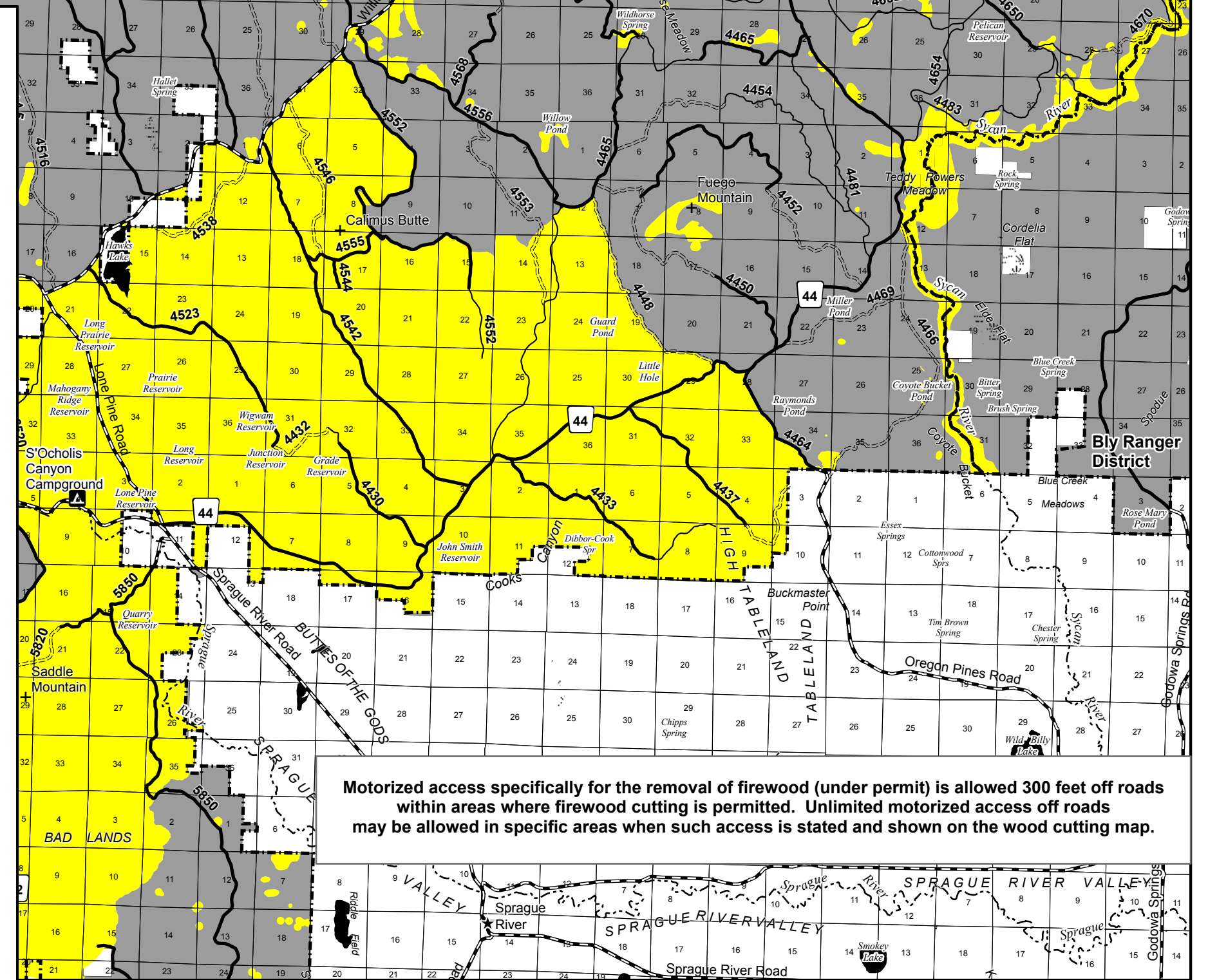
You will need to refer to the 2026 Personal Use Rules and Regulations, and Terms and Conditions that is specific to each district for firewood cutting restrictions. The purpose of this map is to show open areas for firewood cutting. Other Forest Service maps can be used to locate areas not shown on this map.

Legend

- | | | |
|---|-----------------------------|---|
| National Forest Lands - Designated Woodcutting Area | Railroad | River |
| National Forest Lands - No Woodcutting Allowed | Trail | Lake / Pond |
| Non-National Forest Lands - No Woodcutting Allowed | Highways | Marsh |
| Town | County Roads | Wilderness |
| Administrative Site | Forest Roads | Crater Lake National Park |
| Summit | Paved Surface | Ranger District Boundary |
| | Crushed Aggregate Or Gravel | Cabin Lake Seasonal Closure - Dec 1 thru Mar 31 |
| | Improved Native Material | |
| | Native Material | |



0 1 2 3 4 5 10 15 20 Miles



Motorized access specifically for the removal of firewood (under permit) is allowed 300 feet off roads within areas where firewood cutting is permitted. Unlimited motorized access off roads may be allowed in specific areas when such access is stated and shown on the wood cutting map.