

Dixie National Forest Escalante Ranger District Motor Vehicle Use Map

UTAH Forest Service 2026
United States Department of Agriculture

Legend

- Roads Open to Highway Legal Vehicles
- Roads Open to All Vehicles
- Trails Open to E-Bikes Only
- Trails Open to Vehicles 50' or Less in Width
- Interstate
- Highways, U.S. State
- Other Public Roads
- Short Route Identifier
- FS Campground
- Picnic Area
- Peaks
- Forest or Unit Boundary
- National Forest System Lands
- Non-National Forest System Lands within the National Forest
- Wilderness Areas
- Political Boundary
- Lakes and Rivers

Dispersed Camping:
Motor Vehicle use off of designated roads and/or trails for the purposes of dispersed camping is permitted for up to 150 feet from the centerline of all roads and/or trails from the period of 01/01 to 12/31.

INFORMATION SOURCES

Please contact the Supervisor's Office at 820 North Main Street, Cedar City, Utah 84721. The telephone number is (435) 865-3700. Information is also available at the five District Ranger Headquarters.

Pine Valley Ranger District
196 East Tabernacle Rd. 38
St. George, Utah 84770
(435) 865-3700

St. George Interagency Recreation Information
345 East Riverside
St. George, Utah 84700
(435) 865-3266

Cedar City Ranger District
820 North Main Street
Cedar City, Utah 84721
(435) 865-3200

Powell Ranger District
225 East Center Street
P.O. Box 82
Panguitch, Utah 84749
(435) 676-6300

Escalante Ranger District
Escalante Interagency Federal Building
750 West Main Street
Escalante, Utah 84726
(435) 826-5499

Fremont River Ranger District
138 South Main
P.O. Box 129
Lone, Utah 84747
(435) 836-2800

www.fs.usda.gov/dixie

VICINITY MAP

Special Designation:
All trails with a special designation are open to vehicles 62" or less in width

PURPOSE AND CONTENTS OF THIS MAP

The designations shown on this motor vehicle use map (MVUM) were made by the responsible official pursuant to 36 CFR 212.51, are effective as of the date on the front cover of this MVUM, and will remain in effect until superseded by next year's MVUM.

Kevin Wright
Forest Supervisor, Dixie National Forest

It is the responsibility of the user to acquire the current MVUM. This MVUM shows the National Forest System roads, National Forest System trails, and the areas on National Forest System lands in the Powell Ranger District that are designated for motor vehicle use pursuant to 36 CFR 212.51. This MVUM also identifies the vehicle classes allowed on each road and in each area, and any seasonal restrictions that apply on those roads and in those areas.

OPERATOR RESPONSIBILITIES

Operating a motor vehicle on National Forest System roads, National Forest System trails, and in areas on National Forest System lands carries a greater responsibility than operating that vehicle in a city or other developed setting. Not only must you know and follow all applicable traffic laws, you need to show concern for the environment as well as other forest users. The misuse of motor vehicles can lead to the temporary or permanent closure of any designated road, trail, or area. As a motor vehicle operator, you are also subject to State traffic law, including State requirements for licensing, registration, and operation of the vehicle in question.

Motor vehicle use, especially off-highway vehicle use, involves inherent risks that may cause property damage, serious injury, and possibly death to participants. Drive cautiously and anticipate rough surfaces and features, such as snow, mud, vegetation, and water crossings common to remote driving conditions. By your participation, you voluntarily assume full responsibility for these damages, risks, and dangers. Take care at all times to protect yourself and those under your responsibility.

Much of the Escalante Ranger District Dixie National Forest is remote. Medical assistance may not be readily available. Cellular telephones do not work in many areas of the Escalante Ranger District. Take adequate food, water, first-aid supplies, and other equipment appropriate for the conditions and expected weather.

PROHIBITIONS

It is prohibited to possess or operate a motor vehicle on National Forest System lands on the Escalante Ranger District Dixie National Forest other than in accordance with these designations (36 CFR 261.13).

Violators of 36 CFR 261.13 are subject to a fine of up to \$5,000, imprisonment for up to 6 months, or both (18 U.S.C. 3571(e)). This prohibition applies regardless of the presence or absence of signs.

This map does not display nonmotorized uses, over-snow uses, or other facilities and attractions on the Dixie National Forest. Obtain forest visitor information from the local national forest office.

Designated roads, trails and areas may also be subject to temporary, emergency closures. As a visitor, you must comply with signs notifying you of such restrictions. A national forest may issue an order to close a road, trail or area on a temporary basis to protect the life, health, or safety of forest visitors or the natural or cultural resources in these areas. Such a temporary and/or emergency closure is consistent with the Travel Management Rule (36 CFR 212.52 (b)), 36 CFR 261 subpart B).

The designation "road or trail open to all motor vehicles" does not supersede State traffic law.

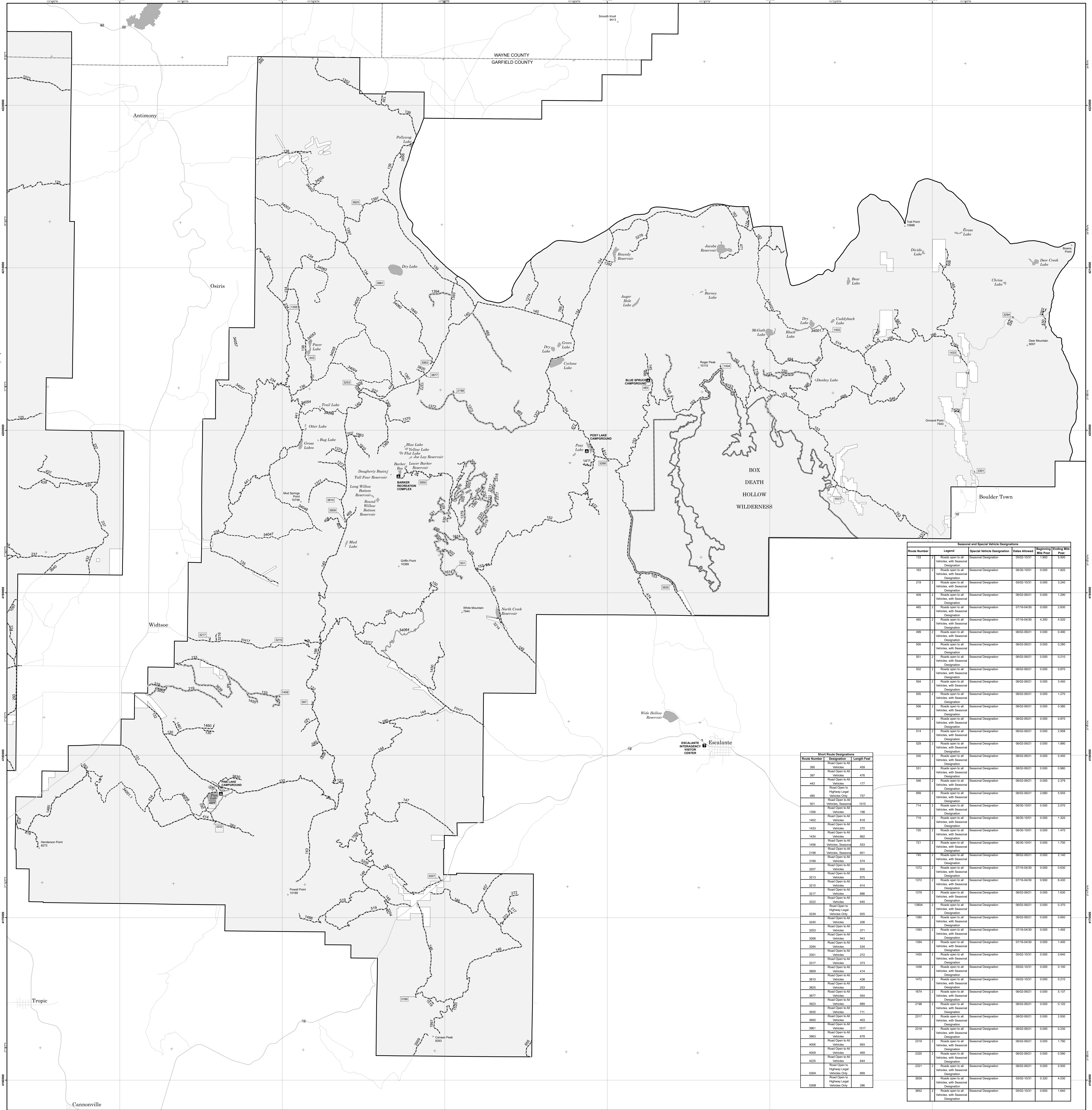
ALWAYS REMEMBER TO RESPECT PRIVATE LAND! PROTECT YOUR PRIVILEGE. STAY ON DESIGNATED ROADS AND TRAILS AND IN DESIGNATED AREAS.

Read and understand this map in its entirety. If you have questions, please contact the Dixie National Forest for clarification.

As a motor vehicle operator on a National Forest System road, trail, or area you must comply with this map, as well as all Federal, State, and local laws and regulations. Compliance with these rules is your responsibility.

tread lightly!.org

Non-Accurate Datum of 1983 (NAD 83)
Universal Transverse Mercator, Zone 12



Short Route Designations

Route Number	Designation	Length (ft)
395	Road Open to All Vehicles	459
397	Road Open to All Vehicles	476
443	Road Open to All Vehicles	177
	Road Open to Highway Legal Vehicles Only	
485	Road Open to All Vehicles, Seasonal	787
801	Road Open to All Vehicles, Seasonal	1015
1356	Road Open to All Vehicles	198
1402	Road Open to All Vehicles	818
1433	Road Open to All Vehicles	270
1434	Road Open to All Vehicles, Seasonal	862
1456	Road Open to All Vehicles, Seasonal	553
2198	Road Open to All Vehicles, Seasonal	691
3180	Road Open to All Vehicles	574
3307	Road Open to All Vehicles	935
3213	Road Open to All Vehicles	875
3216	Road Open to All Vehicles	954
3217	Road Open to All Vehicles	881
3222	Road Open to All Vehicles	645
	Road Open to Highway Legal Vehicles Only	
3230	Road Open to All Vehicles	925
3240	Road Open to All Vehicles	296
3553	Road Open to All Vehicles	371
3686	Road Open to All Vehicles	643
3904	Road Open to All Vehicles	534
3931	Road Open to All Vehicles	272
3937	Road Open to All Vehicles	373
3950	Road Open to All Vehicles	414
3952	Road Open to All Vehicles	438
3953	Road Open to All Vehicles	253
3971	Road Open to All Vehicles	694
3972	Road Open to All Vehicles	889
3975	Road Open to All Vehicles	711
3985	Road Open to All Vehicles	493
3981	Road Open to All Vehicles	1017
3983	Road Open to All Vehicles	678
4006	Road Open to All Vehicles	993
4020	Road Open to All Vehicles	449
4225	Road Open to All Vehicles	644
	Road Open to Highway Legal Vehicles Only	
026A	Road Open to All Vehicles	609
026B	Road Open to All Vehicles	298

Seasonal and Special Vehicle Designations

Route Number	Legend	Special Vehicle Designation	Dates Allowed	Beginning Mile Post	Ending Mile Post
133	Road open to all Vehicles, with Seasonal Designation	Seasonal Designation	05/02-10/31	1.000	1.500
163	Road open to all Vehicles, with Seasonal Designation	Seasonal Designation	06/30-10/01	0.000	1.820
219	Road open to all Vehicles, with Seasonal Designation	Seasonal Designation	05/02-10/31	0.000	3.240
408	Road open to all Vehicles, with Seasonal Designation	Seasonal Designation	06/02-08/21	0.000	1.200
465	Road open to all Vehicles, with Seasonal Designation	Seasonal Designation	07/16-04/30	0.000	2.830
465	Road open to all Vehicles, with Seasonal Designation	Seasonal Designation	07/16-04/30	4.300	5.520
489	Road open to all Vehicles, with Seasonal Designation	Seasonal Designation	06/02-08/21	0.000	0.640
500	Road open to all Vehicles, with Seasonal Designation	Seasonal Designation	06/02-08/21	0.000	0.280
501	Road open to all Vehicles, with Seasonal Designation	Seasonal Designation	06/02-08/21	0.000	0.310
502	Road open to all Vehicles, with Seasonal Designation	Seasonal Designation	06/02-08/21	0.000	0.670
504	Road open to all Vehicles, with Seasonal Designation	Seasonal Designation	06/02-08/21	0.000	3.460
505	Road open to all Vehicles, with Seasonal Designation	Seasonal Designation	06/02-08/21	0.000	1.270
506	Road open to all Vehicles, with Seasonal Designation	Seasonal Designation	06/02-08/21	0.000	0.380
507	Road open to all Vehicles, with Seasonal Designation	Seasonal Designation	06/02-08/21	0.000	0.870
514	Road open to all Vehicles, with Seasonal Designation	Seasonal Designation	06/02-08/21	0.000	2.958
529	Road open to all Vehicles, with Seasonal Designation	Seasonal Designation	06/02-08/21	0.000	1.880
530	Road open to all Vehicles, with Seasonal Designation	Seasonal Designation	06/02-08/21	0.000	0.450
531	Road open to all Vehicles, with Seasonal Designation	Seasonal Designation	06/02-08/21	0.000	0.960
546	Road open to all Vehicles, with Seasonal Designation	Seasonal Designation	06/02-08/21	0.000	2.379
608	Road open to all Vehicles, with Seasonal Designation	Seasonal Designation	06/02-08/21	2.880	3.555
714	Road open to all Vehicles, with Seasonal Designation	Seasonal Designation	06/30-10/01	0.000	2.070
719	Road open to all Vehicles, with Seasonal Designation	Seasonal Designation	06/30-10/01	0.000	1.320
720	Road open to all Vehicles, with Seasonal Designation	Seasonal Designation	06/30-10/01	0.000	1.470
721	Road open to all Vehicles, with Seasonal Designation	Seasonal Designation	06/30-10/01	0.000	1.700
145	Road open to all Vehicles, with Seasonal Designation	Seasonal Designation	06/02-08/21	0.000	2.140
1372	Road open to all Vehicles, with Seasonal Designation	Seasonal Designation	07/16-04/30	0.000	0.830
1372	Road open to all Vehicles, with Seasonal Designation	Seasonal Designation	07/16-04/30	9.900	6.430
1379	Road open to all Vehicles, with Seasonal Designation	Seasonal Designation	06/02-08/21	0.000	1.630
1380A	Road open to all Vehicles, with Seasonal Designation	Seasonal Designation	06/02-08/21	0.000	0.370
1380	Road open to all Vehicles, with Seasonal Designation	Seasonal Designation	06/02-08/21	0.000	0.850
1380	Road open to all Vehicles, with Seasonal Designation	Seasonal Designation	07/16-04/30	0.000	1.462
1394	Road open to all Vehicles, with Seasonal Designation	Seasonal Designation	07/16-04/30	0.000	1.400
1455	Road open to all Vehicles, with Seasonal Designation	Seasonal Designation	05/02-10/31	0.000	0.840
1456	Road open to all Vehicles, with Seasonal Designation	Seasonal Designation	05/02-10/31	0.000	0.100
1472	Road open to all Vehicles, with Seasonal Designation	Seasonal Designation	05/02-10/31	0.000	0.270
1874	Road open to all Vehicles, with Seasonal Designation	Seasonal Designation	06/02-08/21	0.000	5.137
2196	Road open to all Vehicles, with Seasonal Designation	Seasonal Designation	06/02-08/21	0.000	0.720
2317	Road open to all Vehicles, with Seasonal Designation	Seasonal Designation	06/02-08/21	0.000	2.930
2318	Road open to all Vehicles, with Seasonal Designation	Seasonal Designation	06/02-08/21	0.000	0.230
2319	Road open to all Vehicles, with Seasonal Designation	Seasonal Designation	06/02-08/21	0.000	1.790
2350	Road open to all Vehicles, with Seasonal Designation	Seasonal Designation	06/02-08/21	0.000	0.580
2371	Road open to all Vehicles, with Seasonal Designation	Seasonal Designation	06/02-08/21	0.000	0.500
3638	Road open to all Vehicles, with Seasonal Designation	Seasonal Designation	05/02-10/31	0.320	4.030
3852	Road open to all Vehicles, with Seasonal Designation	Seasonal Designation	05/02-10/31	0.800	1.640