

# Dixie National Forest Powell Ranger District Motor Vehicle Use Map



UTAH 2026  
United States Department of Agriculture



## OPERATOR RESPONSIBILITIES

Operating a motor vehicle on National Forest System roads, National Forest System trails, and in areas on National Forest System lands carries a greater responsibility than operating that vehicle in a city or other developed setting. Not only must you know and follow all applicable traffic laws, you need to show concern for the environment as well as other forest users. The misuse of motor vehicles can lead to the temporary or permanent closure of any designated road, trail, or area. As a motor vehicle operator, you are also subject to State traffic law, including State requirements for licensing, registration, and operation of the vehicle in question.

Motor vehicle use, especially off-highway vehicle use, involves inherent risks that may cause property damage, serious injury, and possibly death to participants. Drive cautiously and anticipate rough surfaces and features, such as snow, mud, vegetation, and water crossings common to remote driving conditions. By your participation, you voluntarily assume full responsibility for these dangers, risks, and dangers. Take care at all times to protect yourself and those under your responsibility.

Much of the Powell Ranger District is remote. Medical assistance may not be readily available. Cellular telephones do not work in many areas of the Powell Ranger District. Take adequate food, water, first-aid supplies, and other equipment appropriate for the conditions and expected weather.

**ALWAYS REMEMBER TO RESPECT PRIVATE LAND!  
PROTECT YOUR PRIVILEGE. STAY ON DESIGNATED  
ROADS AND TRAILS AND IN DESIGNATED AREAS.**

Read and understand this map in its entirety. If you have questions, please contact the Dixie National Forest for clarification.

As a motor vehicle operator on a National Forest System road, trail, or area you must comply with this map, as well as all Federal, State, and local laws and regulations. Compliance with these rules is your responsibility.



Please contact the Supervisor's Office at 820 North Main Street, Cedar City, Utah 84721. The telephone number is (435) 865-3700. Information is also available at the District Ranger Headquarters.

Pine Valley Ranger District  
196 East Laboratory Rd. 38  
St. George, Utah 84770  
(435) 865-3100

St. George Interagency  
Recreation Information  
345 East Riverside  
St. George, Utah 84790  
(435) 868-3246

Cedar City Ranger District  
820 North Main Street  
Cedar City, Utah 84721  
(435) 865-3200

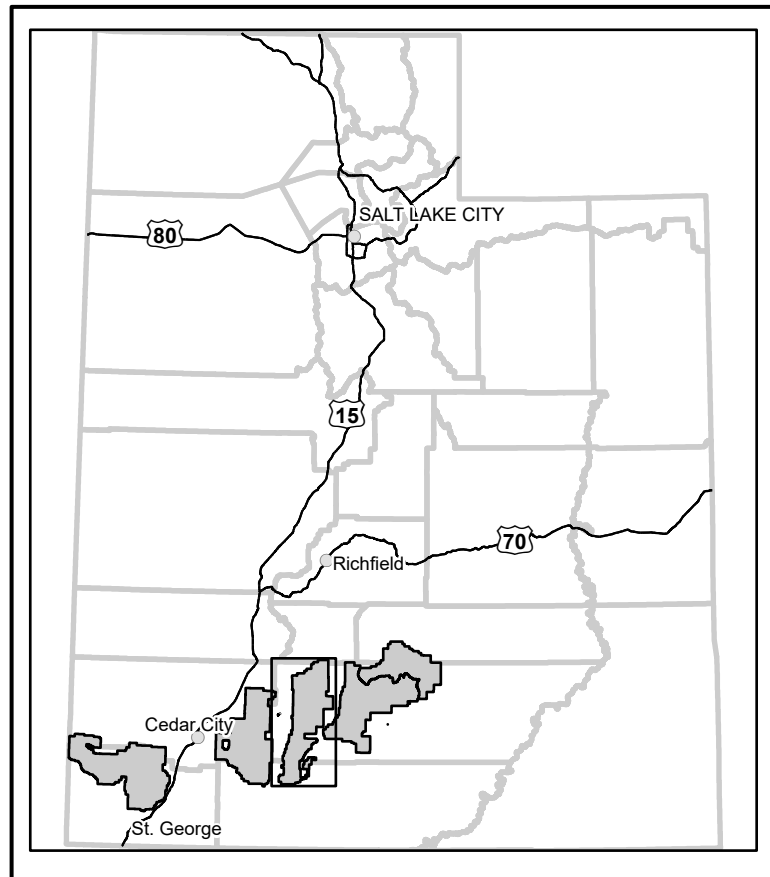
Powell Ranger District  
225 East Center Street  
P.O. Box 88  
Panguitch, Utah 84759  
(435) 875-6350

Escalante Ranger District  
Escalante Interagency Federal Building  
735 West Main Street  
Escalante, Utah 84705  
(435) 826-5400  
Visitor Center (435) 826-5499

Fremont River Ranger District  
130 South Main  
P.O. Box 120  
Lea, Utah 84747  
(435) 836-2800

[www.fs.usda.gov/dixie](http://www.fs.usda.gov/dixie)

## VICINITY MAP



USDA is an equal opportunity provider,  
employer and lender.



FB-873-0407

## PURPOSE AND CONTENTS OF THIS MAP

The designations shown on this motor vehicle use map (MVUM) were made by the responsible official pursuant to 36 CFR 212.51, are effective as of the date on the front cover of this MVUM, and will remain in effect until superseded by next year's MVUM.

*Karin Wright*  
Forest Supervisor, Dixie National Forest

It is the responsibility of the user to acquire the current MVUM. This MVUM shows the National Forest System roads, National Forest System trails, and the areas on National Forest System lands in the Powell Ranger District that are designated for motor vehicle use pursuant to 36 CFR 212.51. This MVUM also identifies the vehicle classes allowed on each route and in each area, and any seasonal restrictions that apply on those routes and in those areas.

Designation of a road, trail, or area for motor vehicle use by a particular class of vehicle under 36 CFR 212.51 should not be interpreted as encouraging or implying use of or implying that the road, trail, or area is passable, actively maintained, or safe for travel. Motor vehicle designations include parking along designated routes and at facilities associated with designated routes when it is safe to do so and when not causing damage to National Forest System resources. Seasonal weather conditions and natural events may render designated roads and trails impassable for extended periods. Designated areas may contain dangerous or impassable terrain. Many designated roads and trails may be passable only by high-clearance vehicles or four-wheel-drive vehicles. Maintenance of designated roads and trails will depend on available resources, and many may receive little maintenance.

This motor vehicle use map identifies those roads, trails, and areas designated for the motor vehicle use under 36 CFR 212.51 for the purpose of enforcing the prohibition at 36 CFR 261.13. This is a limited purpose. The other public roads are shown for information and navigation purposes only and are not subject to designation under the Forest Service travel management regulation.

These designations apply only to National Forest System roads, National Forest System trails, and areas on National Forest System lands.

## PROHIBITIONS

It is prohibited to possess or operate a motor vehicle on National Forest System lands on the Dixie National Forest other than in accordance with these designations (CFR 261.13).

Violators of 36 CFR 261.13 are subject to a fine of up to \$5,000, imprisonment for up to 6 months, or both (18 U.S.C. 3571(e)). This prohibition applies regardless of the presence or absence of signs.

This map does not display nonmotorized uses, over-snow uses, or other facilities and attractions on the Dixie National Forest. Obtain forest visitor information from the local national forest office.

Designated roads, trails and areas may also be subject to temporary emergency closures. As a visitor, you must comply with signs notifying you of such restrictions. A national forest may issue an order to close a road, trail or area on a temporary basis to protect the life, health, or safety of forest visitors or the natural or cultural resources in these areas. Such a temporary and/or emergency closure is consistent with the Travel Management Rule (36 CFR 212.52 (b), 36 CFR 261 subpart B).

The designation "road or trail open to all motor vehicles" does not supersede State traffic law.

## Legend

- Roads Open to Highway Legal Vehicles
- Roads Open to All Vehicles
- Trails Open to E-Bikes Only
- Trails Open to Vehicles 50" or Less in Width
- Interstate
- Highways, U.S. State
- Other Public Roads
- 3603 Short Route Identifier
- FS Campground
- Picnic Area
- Peaks
- Forest or Unit Boundary
- National Forest System Lands
- Non-National Forest System Lands within the National Forest
- Wilderness Areas
- Political Boundary
- Lakes and Rivers

## EXPLANATION OF LEGEND ITEMS

**Roads Open to Highway Legal Vehicles Only:**  
These roads are open only to motor vehicles licensed under State law for general operation on all public roads within the state.

**Roads Open to All Vehicles:**  
These roads are open to all motor vehicles, including smaller off-highway vehicles that may not be licensed for highway use (but not to over-size or overweight vehicles under State traffic law).

**Trails Open to Vehicles 50 inches or Less in Width:**  
Trails open only to motor vehicles less than 50 inches in width at the widest point on the vehicle.

**Trails Open to E-Bikes Only:**  
The Forest Service manages e-bikes as a motor vehicle. Class 1, 2, and 3 e-bikes are allowed on roads designated for all classes of motor vehicles and roads designated for motorized mixed use. Class 1, 2, and 3 e-bikes are also allowed on trails open to all classes of motor vehicles, including motorcycles, and trails designated for those classes of e-bikes.

**Other Public Roads and Trails:**  
--- Interstate  
--- Highways, U.S. State  
--- Other Public Roads

These symbols are used to show routes the Forest Service does not have jurisdiction over and has not designated for motorized use. These symbols are part of the reference layers showing connections to towns and cities outside the forest boundary.

**Short Route Identifier:**  
3603

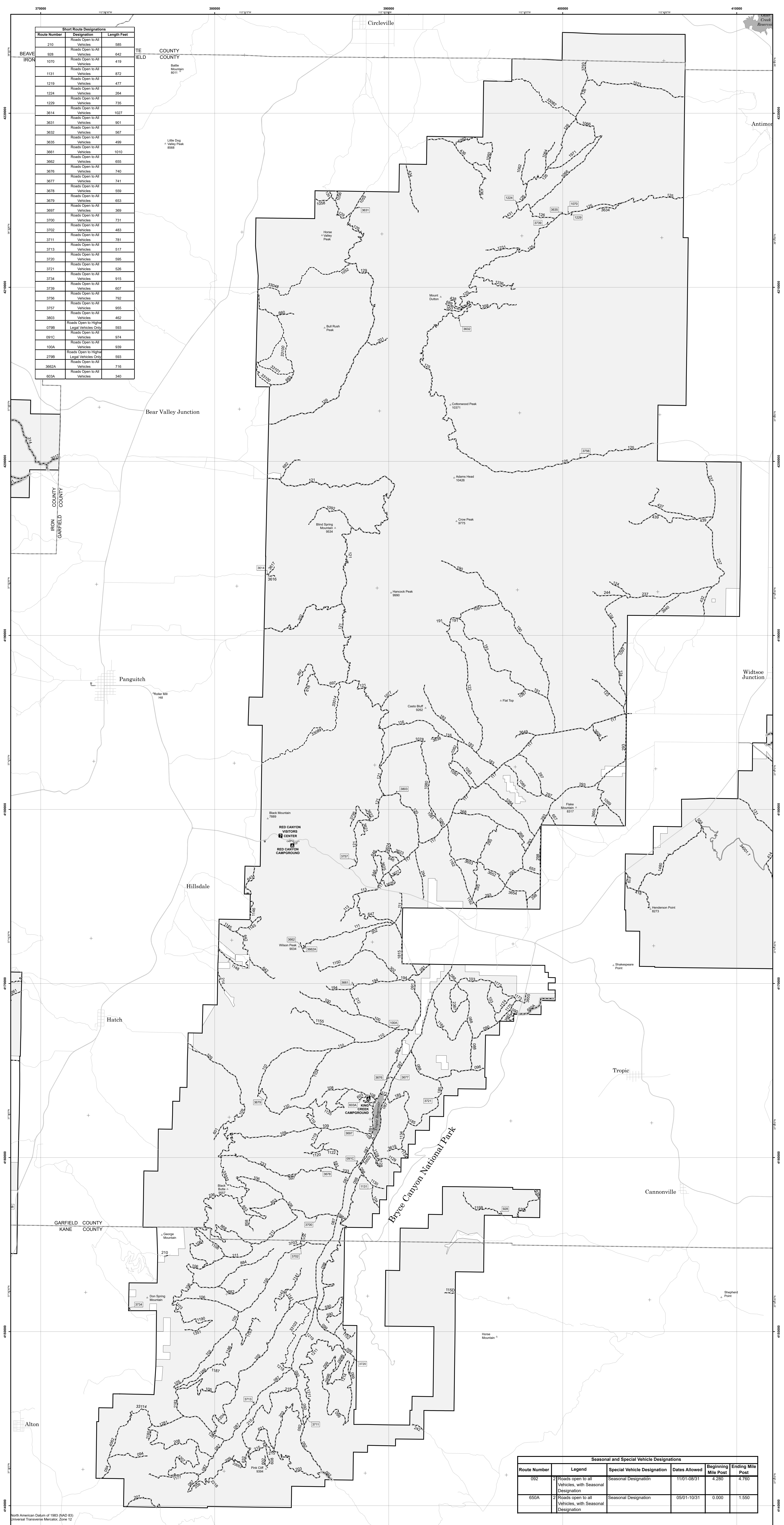
This symbol is used for roads that are too short to show a symbol type on the map. The symbol contains the number of the road or trail. Users should refer to the corresponding number in the Short Route Table for designation information.

**Seasonal Designation:**

This symbol, used in conjunction with one of the other road or trail symbols, indicates that the road or trail is open only during certain portions of the year. Refer to Seasonal and Special Designation blanket statement below.

**Dispersed Camping:**  
Motor Vehicle use off of designated roads and/or trails for the purpose of dispersed camping is permitted for up to 150 feet from the centerline of all roads and/or trails from the period of 01/01 to 12/31.

Route Number	Description	Length Feet
210	Roads Open to All Vehicles	585
928	Roads Open to All Vehicles	642
1070	Roads Open to All Vehicles	419
1131	Roads Open to All Vehicles	872
1219	Roads Open to All Vehicles	477
1224	Roads Open to All Vehicles	284
1229	Roads Open to All Vehicles	735
3614	Roads Open to All Vehicles	1027
3631	Roads Open to All Vehicles	901
3632	Roads Open to All Vehicles	567
3635	Roads Open to All Vehicles	499
3661	Roads Open to All Vehicles	1010
3662	Roads Open to All Vehicles	655
3676	Roads Open to All Vehicles	740
3677	Roads Open to All Vehicles	741
3678	Roads Open to All Vehicles	559
3679	Roads Open to All Vehicles	653
3687	Roads Open to All Vehicles	369
3700	Roads Open to All Vehicles	731
3702	Roads Open to All Vehicles	483
3711	Roads Open to All Vehicles	781
3713	Roads Open to All Vehicles	517
3720	Roads Open to All Vehicles	585
3721	Roads Open to All Vehicles	526
3734	Roads Open to All Vehicles	815
3738	Roads Open to All Vehicles	607
3756	Roads Open to All Vehicles	792
3757	Roads Open to All Vehicles	955
3803	Roads Open to All Vehicles	462
0788	Roads Open to Highway Legal Vehicles Only	593
091C	Roads Open to All Vehicles	874
100A	Roads Open to All Vehicles	939
2788	Roads Open to Highway Legal Vehicles Only	583
3662A	Roads Open to All Vehicles	716
603A	Roads Open to All Vehicles	340



Seasonal and Special Vehicle Designations					
Route Number	Legend	Special Vehicle Designation	Dates Allowed	Beginning Mile Post	Ending Mile Post
692	Roads open to all Vehicles, with Seasonal Designation	Seasonal Designation	11/01-08/31	4.280	4.760
650A	Roads open to all Vehicles, with Seasonal Designation	Seasonal Designation	05/01-10/31	0.000	1.550