

**ASHLEY NATIONAL FOREST
Roosevelt Ranger District
Tungsten-Painter Sheep Allotment
2025 Annual Operating Instructions**

Permittee
[REDACTED]

Number of Sheep

1,500 dry's

Season

July 12 to September 6

Grazing Schedule

Painter Basin Allotment

Unit Name	Sequence	Dates of Use	Allowable Use*
Trail On - Gunsight Pass		7/12 – 7/16	40%
Gilbert Creek	1 st	7/17 – 7/31	40%
Lower Painter Basin (South)	2 nd	8/01 – 8/17	40%
Upper Painter Basin (North)	3 rd	8/18 – 9/0	40%
Trail Off - Gunsight Pass		9/02 – 9/06	40%

Tungsten Allotment

Unit Name	Sequence	Dates of Use	Allowable Use*
Trail On - Smith Fork Pass			
Head of Yellowstone	Rest		Rest
North Star Lake	Rest		Rest
Kings Lake	Rest		Rest
Trail Off - Smiths Fork Pass			

* Maximum allowable use in the wilderness is set at 40%.

1,500 dry's are scheduled to graze during the 2025 season. Sheep are scheduled to graze Gilbert Creek unit first. Around July 31st, the herd will enter and graze the Lower Painter Basin (South) unit. The Upper Painter Basin (North) unit will be grazed last.

The dates of use above are to be used as guidelines. The primary determining factor for moving livestock from one unit to the other is utilization. Since the allotment is located within the High Uinta Wilderness Area, allowable use is 40% in upland forage areas in all units. A 4" stubble height of riparian forage species (i.e. sedges) shall be left in all riparian forage areas (i.e. stream corridors and wet meadows). Permittees should closely monitor utilization.

Grazing fees will be \$0.27 per head month this year. *Fees must be paid through Lockbox collection procedures before livestock will be authorized to enter the National Forest.* It can take two to three week for payment to go through Lockbox so please pay your bill well in advance of your on date.

Allotment Meeting Notes

A meeting was held at the Evanston District Office on March 13, 2025. The following items were discussed:

1. Livestock generally enter the Wasatch-Cache National Forest and start trailing to the Ottoson Allotment around July 12th. Livestock will not enter the Wasatch-Cache National Forest until sheep can be trailed over the passes. At the end of the season livestock will trail across and leave the Wasatch-Cache National Forest by September 6th.
2. Salt will be placed no closer than 0.20 mile from water, sheepherder camps, and Forest Service trails. Mitigation measures are required at salt sites and/or bedgrounds where bare soil is excessively high. These sites will no longer be used for salting or bedding and new sites will be located and used.
4. The permittee will be required to follow wilderness rules and regulations. It is the permittee's responsibility to keep updated on wilderness policies.
5. All camps will be thoroughly cleaned and a final inspection by herders and permittee will occur prior to leaving the allotment. No trash is to be left or buried on Forest Service administered lands.
6. Herders need to keep accurate records of grazing use and dates, stocking numbers, big horn sheep sightings, and animal losses.
7. An allotment map with the grazing sequence is included in the operating instructions. Herders need to be informed of the grazing schedule and sequence, record keeping, salting and bedding practices, camp cleanliness, and all wilderness rules and regulations.
8. Predator losses were high in 2024, lost 14 sheep to predators on this allotment.

All hay and straw transported onto the Forest must be tagged as Certified Noxious Weed Free as directed by Forest Service Order #04-00-097. Noncompliance with this closure order will result in a citation.

Actual Use Record

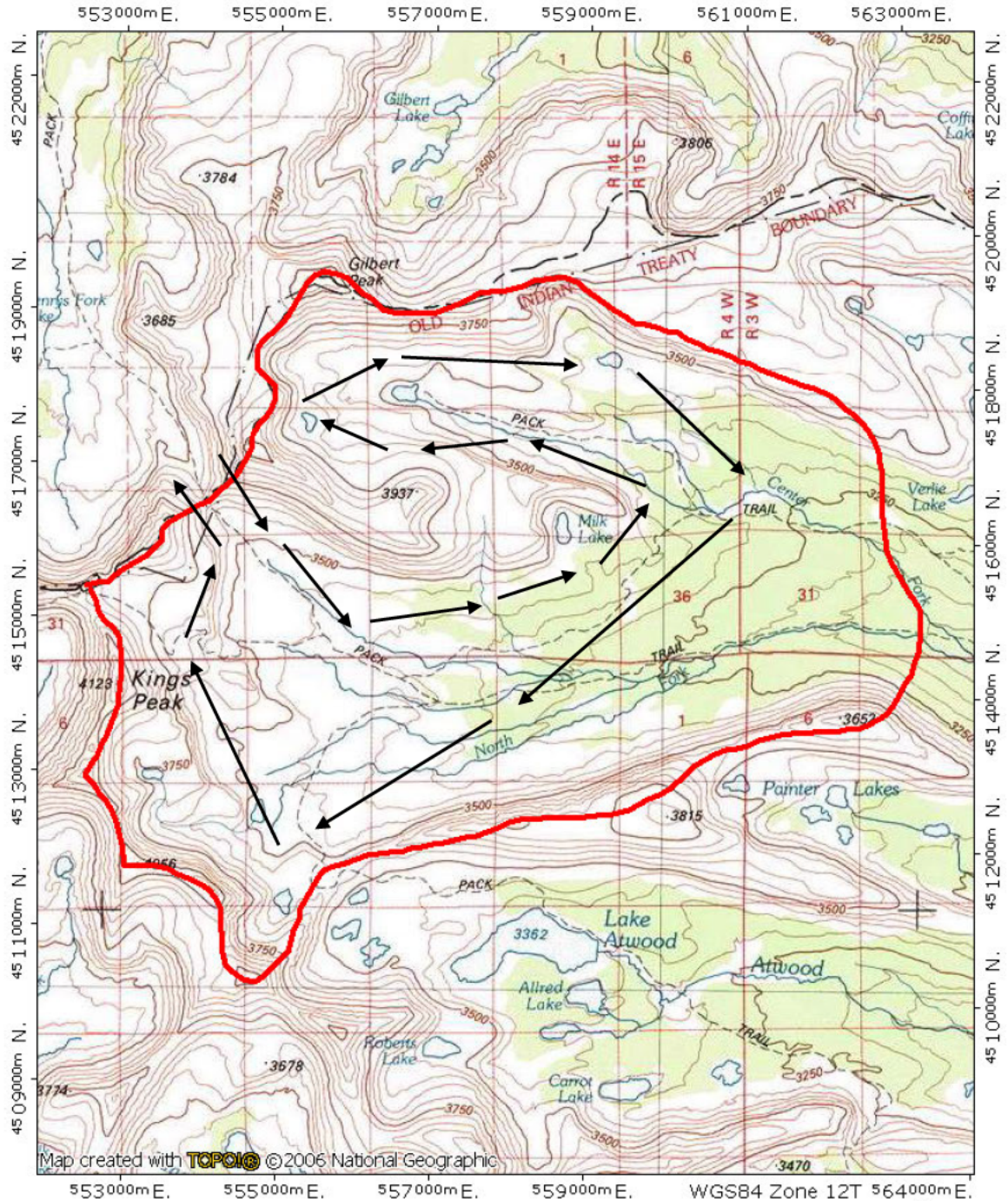
An actual use record and maintenance report needs to **be filled out and returned to us immediately following the grazing season.** Please indicate dates and times of use for each unit. The report helps us to tabulate actual use on your allotment. If you have concerns or need to contact the Forest, please phone Sandy Kaminski at (435) 790-7011.

Thanks for your cooperation and have a good summer.

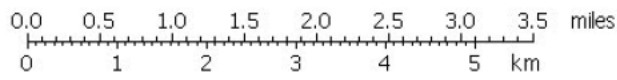
Kristy Groves
Forest Supervisor

Painter Basin Allotment 2025 Grazing Sequence

TOPO! map printed on 05/01/12 from "Untitled.tpo"

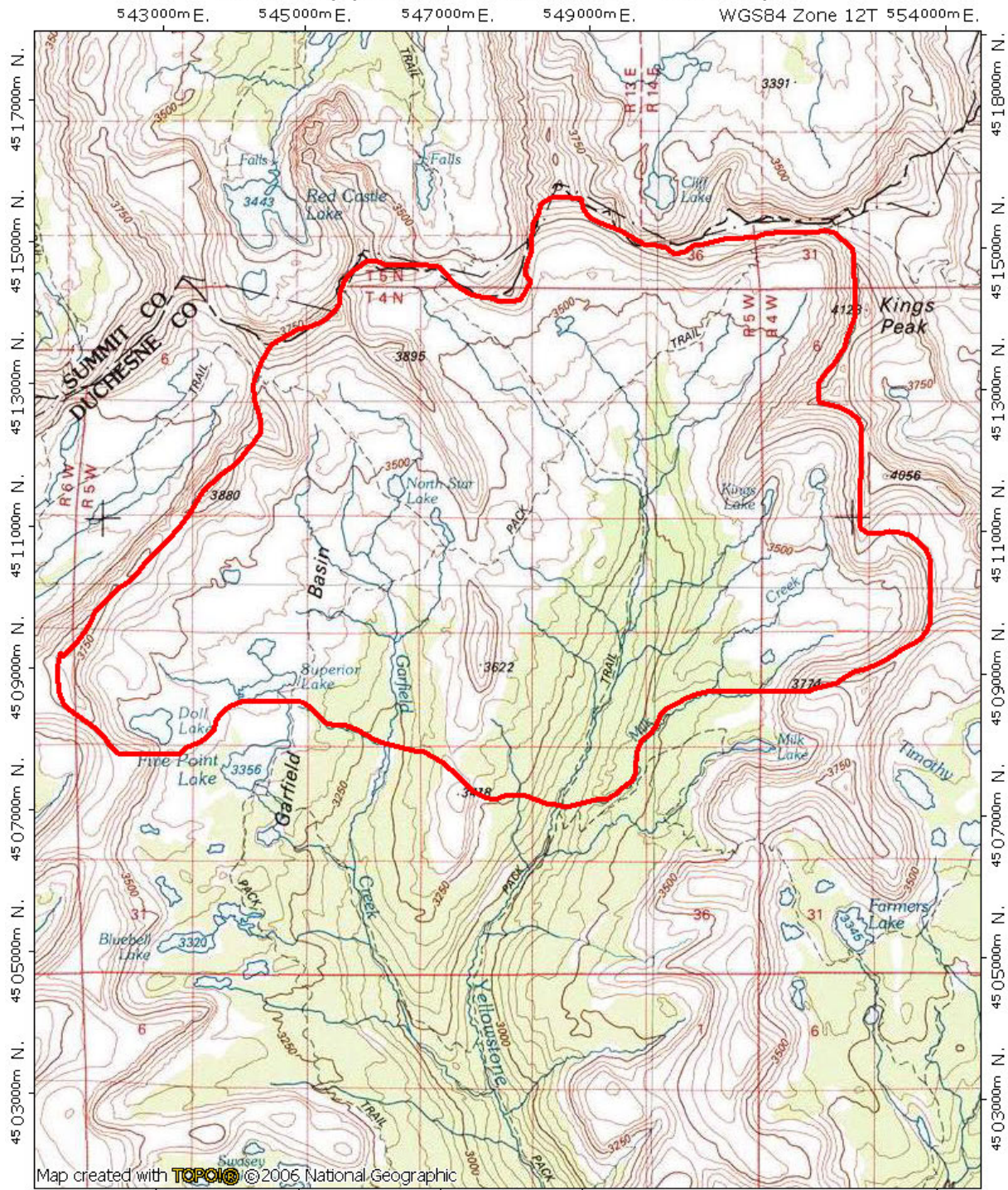


Map created with **TCPOIC** © 2006 National Geographic

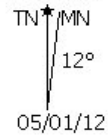
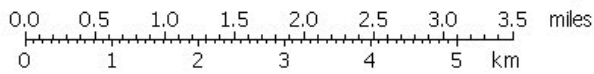


Tungsten Allotment No Grazing in 2025

TOPO! map printed on 05/01/12 from "Untitled.tpo"



Map created with **TOPO!** © 2006 National Geographic



Actual Use Record

Allotment Painter Basin YEAR 2025

To be completed by the Permittee showing actual use, cost and losses. Please complete one form for each allotment and mail or dropped off to the Duchesne Ranger District Office, 85 West Main Duchesne, UT 84021 by December 31st.

Pasture/Unit	Number Grazed	Date On	Date Off
Gilbert Creek			
Lower Painter Basin (South)			
Upper Painter Basin (North)			

ANNUAL COST RECORD

Activity	Hours	Material Costs	Other Costs (Labor, Travel, etc.)
New Improvements			
Maintenance			
Allotment Management			
Other:			

LOSS RECORD BY NUMBER AND TYPE (example: 3 calves, 1 bull, 2 cows)

Pasture/Unit	Poisonous Plant	Predation	Weather	Disease	Theft	Other (fire, vandalism, hit by a car)	Unknow

Remarks (needs, new projects, management suggestions):

Signature: _____ Date: _____