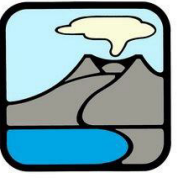


# MOUNT ST. HELENS NATIONAL VOLCANIC MONUMENT

## Gifford Pinchot National Forest, Washington



### Know the Rules

Disturbing or removing natural features is prohibited in all areas.

#### Closure Area #1:

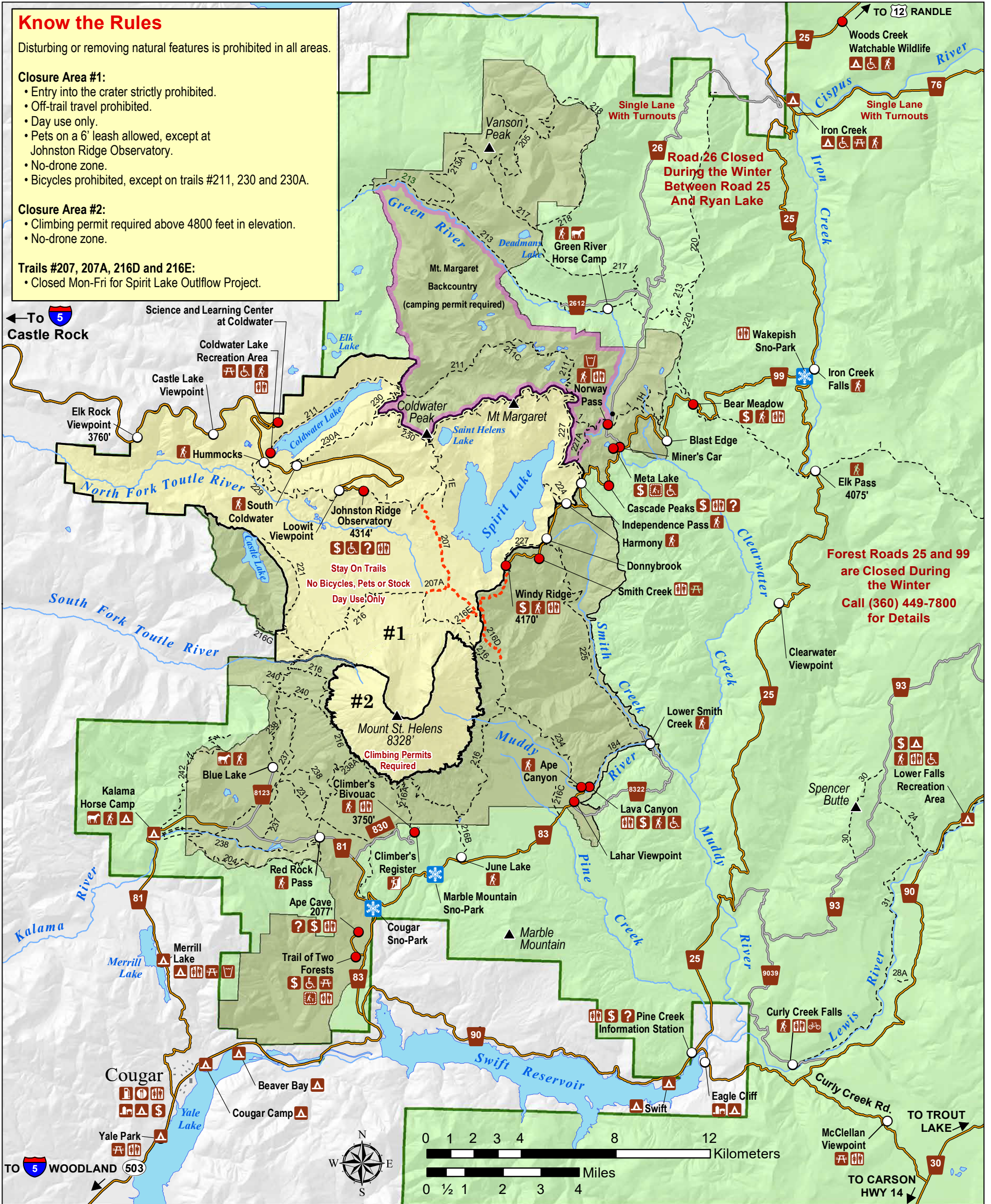
- Entry into the crater strictly prohibited.
- Off-trail travel prohibited.
- Day use only.
- Pets on a 6' leash allowed, except at Johnston Ridge Observatory.
- No-drone zone.
- Bicycles prohibited, except on trails #211, 230 and 230A.

#### Closure Area #2:

- Climbing permit required above 4800 feet in elevation.
- No-drone zone.

#### Trails #207, 207A, 216D and 216E:

- Closed Mon-Fri for Spirit Lake Outflow Project.



**Forest Roads 25 and 99 are Closed During the Winter**  
Call (360) 449-7800 for Details

**Gifford Pinchot NF**

- National Forest Boundary
- Mount St. Helens NVM
- Camping Permit Required
- Restricted Area
- No Fees Required
- Recreation Fee Required

**Transportation**

- Paved Roads
- Gravel Roads
- Trails
- Construction Closure, Contact Monument for Current Status

**Hydrography**

- Major Rivers
- Major Waterbodies

**Recreation**

- Information
- Passes Sold
- Barrier Free
- Campground
- Trail Access
- Picnic Area
- Interpretive Trail
- Horse Area

- Restrooms
- Water
- Food
- Sno-park  
(Washington State Sno-Park pass required December-April)
- Fuel
- Gift Shop
- General Store

Elevations are in feet

*This map is intended for general reference and is approximate in general proportions.*  
Printed June 2026